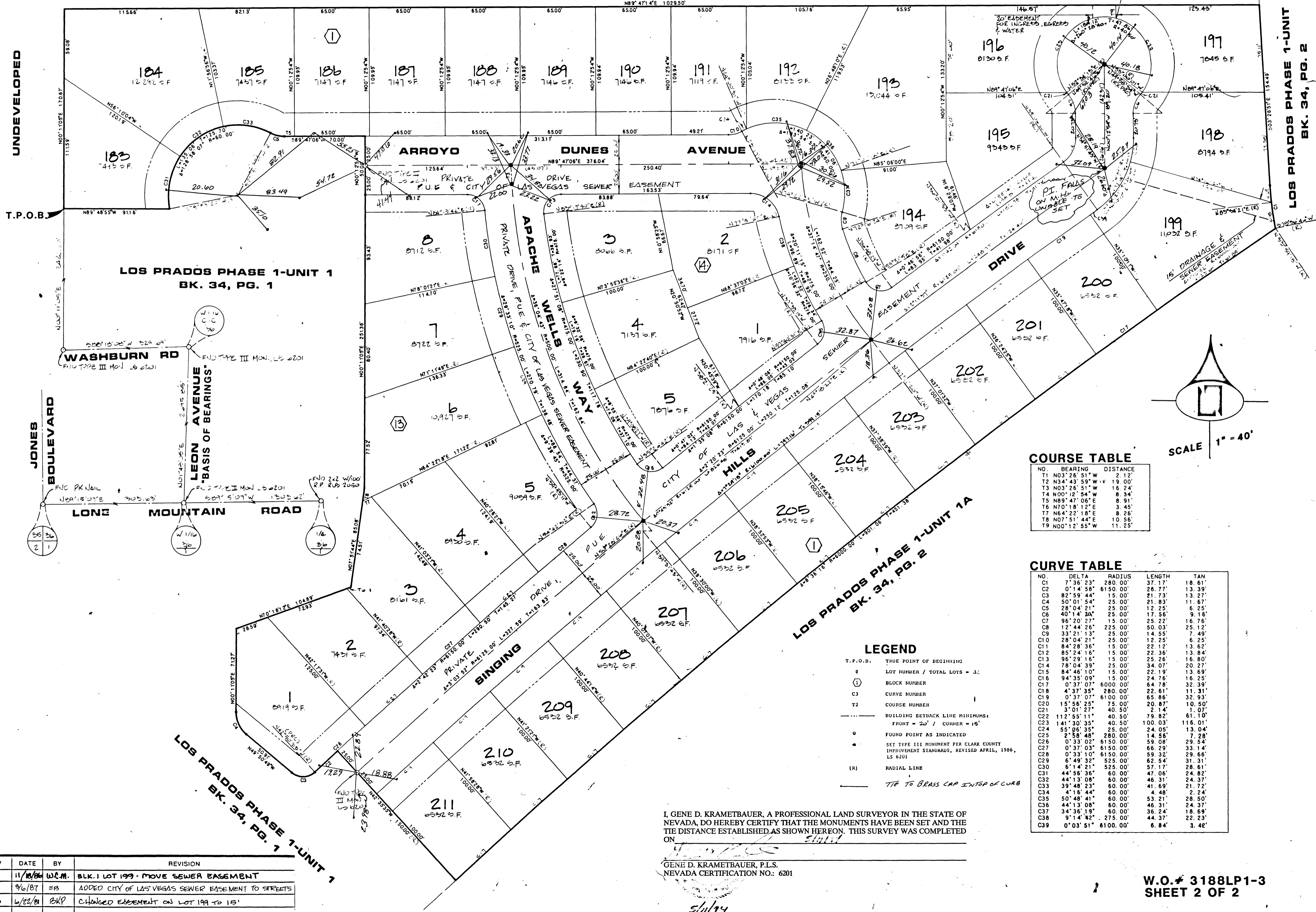


LOS PRADOS PHASE 1-UNIT 3

A PORTION OF THE NW1/4 OF SECTION 36, T.19S., R.60E., M.D.M., CITY OF LAS VEGAS, CLARK COUNTY, NEVADA

MONUMENT TIE MAP

UNDEVELOPED



COURSE TABLE

NO.	BEARING	DISTANCE
T1	N03°26'51"W	2.12'
T2	N34°43'59"W	19.00'
T3	N03°26'51"W	16.24'
T4	N00°12'54"W	8.34'
T5	N89°47'06"E	8.91'
T6	N70°18'12"E	3.45'
T7	N64°22'18"E	8.26'
T8	N07°51'44"E	10.56'
T9	N00°12'55"W	11.25'

CURVE TABLE

NO.	DELTA	RADIUS	LENGTH	TAN
C1	7°36'23"	280.00'	37.17'	18.61'
C2	0°14'58"	6150.00'	28.77'	13.39'
C3	82°59'44"	15.00'	21.73'	13.27'
C4	50°01'54"	25.00'	21.83'	11.67'
C5	28°04'21"	25.00'	12.25'	6.25'
C6	40°14'20"	25.00'	17.56'	9.16'
C7	96°20'21"	15.00'	10.52'	16.76'
C8	12°44'26"	225.00'	50.03'	25.12'
C9	33°21'13"	25.00'	14.55'	7.49'
C10	28°04'21"	25.00'	12.25'	6.25'
C11	84°28'36"	15.00'	22.12'	13.52'
C12	85°24'16"	15.00'	22.36'	13.84'
C13	96°29'16"	15.00'	25.26'	16.80'
C14	78°04'39"	25.00'	34.07'	20.27'
C15	84°46'10"	15.00'	22.19'	13.59'
C16	94°35'09"	15.00'	24.76'	16.25'
C17	0°37'07"	6000.00'	64.78'	32.39'
C18	4°37'35"	280.00'	22.61'	11.31'
C19	0°37'07"	6100.00'	65.86'	32.93'
C20	15°56'25"	75.00'	20.87'	10.50'
C21	3°01'27"	40.50'	2.14'	1.07'
C22	112°55'11"	40.50'	79.82'	61.10'
C23	141°50'35"	40.50'	100.03'	116.01'
C24	55°05'35"	25.00'	24.05'	13.04'
C25	2°58'48"	280.00'	14.56'	7.28'
C26	0°33'02"	6150.00'	59.08'	29.54'
C27	0°37'03"	6150.00'	66.29'	33.44'
C28	0°33'10"	6150.00'	69.32'	29.66'
C29	6°49'32"	525.00'	62.54'	31.31'
C30	6°14'21"	525.00'	57.17'	28.61'
C31	44°56'36"	60.00'	47.06'	24.37'
C32	44°13'08"	60.00'	46.31'	24.37'
C33	39°48'23"	60.00'	41.69'	21.72'
C34	4°16'44"	60.00'	4.48'	2.24'
C35	50°48'41"	60.00'	53.21'	28.50'
C36	44°13'08"	60.00'	46.31'	24.37'
C37	34°36'19"	60.00'	36.24'	18.69'
C38	9°14'42"	275.00'	44.37'	22.23'
C39	0°03'51"	6100.00'	6.84'	3.42'

LEGEND

T.P.O.D. TRUE POINT OF BEGINNING

0 LOT NUMBER / TOTAL LOTS = 1-2

① BLOCK NUMBER

C3 CURVE NUMBER

T2 COURSE NUMBER

--- BUILDING SETBACK LINE MINIMUMS
FRONT = 25' / CORNER = 15'

• FOUND POINT AS INDICATED

• SET TYPE III MONUMENT PER CLARK COUNTY IMPROVEMENT STANDARDS, REVISED APRIL, 1986, LS 6201

(R) RADIAL LINE

--- TIE TO BRASS CAP INTOP OF CURB

I, GENE D. KRAMEBAUER, A PROFESSIONAL LAND SURVEYOR IN THE STATE OF NEVADA, DO HEREBY CERTIFY THAT THE MONUMENTS HAVE BEEN SET AND THE TIE DISTANCE ESTABLISHED AS SHOWN HEREON. THIS SURVEY WAS COMPLETED ON 11/18/84

GENE D. KRAMEBAUER, P.L.S.
NEVADA CERTIFICATION NO.: 6201

REV	DATE	BY	REVISION
1	11/18/84	W.C.M.	BLK. 1 LOT 199 - MOVE SEWER EASEMENT
2	9/6/87	EB	ADDED CITY OF LAS VEGAS SEWER EASEMENT TO STREETS
3	4/22/89	BKP	CHANGED EASEMENT ON LOT 199 TO 15'

W.O.# 3188LP1-3
SHEET 2 OF 2

5670 Book 37, Page 80 058-2037-1-3