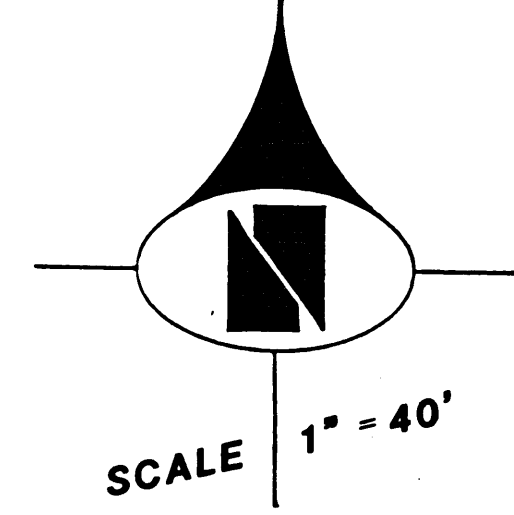
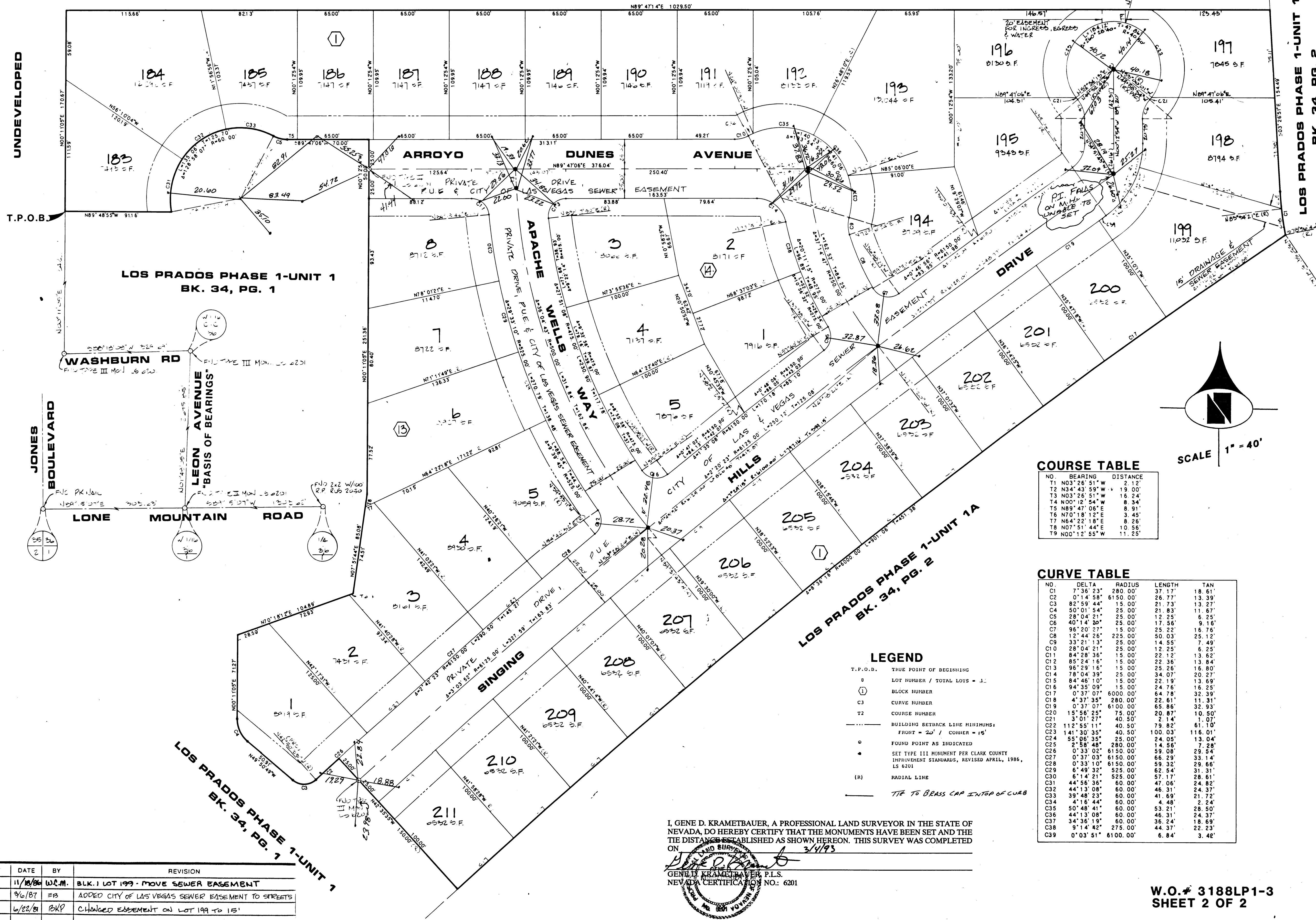


LOS PRADOS PHASE 1-UNIT 3

A PORTION OF THE NW1/4 OF SECTION 36, T.19S., R.60E., M.D.M., CITY OF LAS VEGAS, CLARK COUNTY, NEVADA

MONUMENT TIE MAP

UNDEVELOPED



COURSE TABLE

NO.	BEARING	DISTANCE
T1	N03°26'51"W	2.12'
T2	N34°43'59"W	19.00'
T3	N03°26'51"W	16.24'
T4	N00°12'54"W	8.34'
T5	N89°47'06"E	8.91'
T6	N70°18'12"E	3.45'
T7	N64°22'18"E	8.26'
T8	N07°51'44"E	10.56'
T9	N00°12'55"W	11.25'

CURVE TABLE

NO.	DELTA	RADIUS	LENGTH	TAN
C1	7°36'23"	280.00'	37.17'	18.61'
C2	0°14'58"	6150.00'	26.77'	13.39'
C3	82°59'44"	15.00'	21.73'	13.27'
C4	50°01'54"	25.00'	21.83'	11.67'
C5	28°04'21"	25.00'	12.25'	6.25'
C6	40°14'30"	25.00'	17.56'	9.16'
C7	96°20'27"	15.00'	25.22'	16.76'
C8	12°44'26"	225.00'	50.03'	25.12'
C9	33°21'13"	25.00'	14.55'	7.49'
C10	28°04'21"	25.00'	12.25'	6.25'
C11	84°28'36"	15.00'	22.12'	13.62'
C12	85°24'16"	15.00'	22.36'	13.84'
C13	96°29'16"	15.00'	25.26'	16.80'
C14	78°04'39"	25.00'	34.07'	20.27'
C15	84°46'10"	15.00'	22.19'	13.69'
C16	94°35'09"	15.00'	24.76'	16.25'
C17	0°37'07"	6100.00'	64.78'	32.39'
C18	4°37'35"	280.00'	22.61'	11.31'
C19	0°37'07"	6100.00'	65.86'	32.93'
C20	15°56'25"	75.00'	20.87'	10.50'
C21	31°01'27"	40.50'	2.14'	1.07'
C22	112°55'11"	40.50'	79.82'	61.10'
C23	141°30'35"	40.50'	100.03'	116.01'
C24	55°06'35"	25.00'	24.05'	13.04'
C25	2°58'48"	280.00'	14.56'	7.28'
C26	0°33'02"	6150.00'	59.08'	29.54'
C27	0°37'03"	6150.00'	66.29'	33.14'
C28	0°33'10"	6150.00'	59.32'	29.66'
C29	6°49'32"	525.00'	62.54'	31.31'
C30	6°14'21"	525.00'	57.17'	28.61'
C31	44°56'36"	60.00'	47.06'	24.82'
C32	44°13'08"	60.00'	46.31'	24.37'
C33	39°48'23"	60.00'	41.69'	21.72'
C34	4°16'44"	60.00'	4.48'	2.24'
C35	50°48'41"	60.00'	53.21'	28.50'
C36	44°13'08"	60.00'	46.31'	24.37'
C37	34°36'19"	60.00'	36.24'	18.69'
C38	9°14'42"	275.00'	44.37'	22.23'
C39	0°03'51"	6100.00'	6.84'	3.42'

- LEGEND**
- T.P.O.D. TRUE POINT OF BEGINNING
 - 8 LOT NUMBER / TOTAL LOTS = 1
 - Ⓢ BLOCK NUMBER
 - C3 CURVE NUMBER
 - T2 COURSE NUMBER
 - BUILDING SETBACK LINE MINIMUMS:
FRONT = 20' / CORNER = 15'
 - FOUND POINT AS INDICATED
 - SET TYPE III MONUMENT PER CLARK COUNTY IMPROVEMENT STANDARDS, REVISED APRIL, 1986, LS 6201
 - (R) RADIAL LINE
 - TIE TO BRASS CAP INTERIOR OF CURB

I, GENE D. KRAMETBAUER, A PROFESSIONAL LAND SURVEYOR IN THE STATE OF NEVADA, DO HEREBY CERTIFY THAT THE MONUMENTS HAVE BEEN SET AND THE TIE DISTANCES ESTABLISHED AS SHOWN HEREON. THIS SURVEY WAS COMPLETED ON 3/4/93.

GENE D. KRAMETBAUER, P.L.S.
NEVADA CERTIFICATION NO.: 6201

REV	DATE	BY	REVISION
1	11/18/84	W.C.M.	BLK. 1 LOT 199 - MOVE SEWER EASEMENT
2	9/6/87	EB	ADDED CITY OF LAS VEGAS SEWER EASEMENT TO STREETS
3	6/22/91	BKP	CHANGED EASEMENT ON LOT 199 TO 15'

W.O.# 3188LP1-3
SHEET 2 OF 2

3/4/93

56-71

058-2037-1-3
Book 37, Page 80