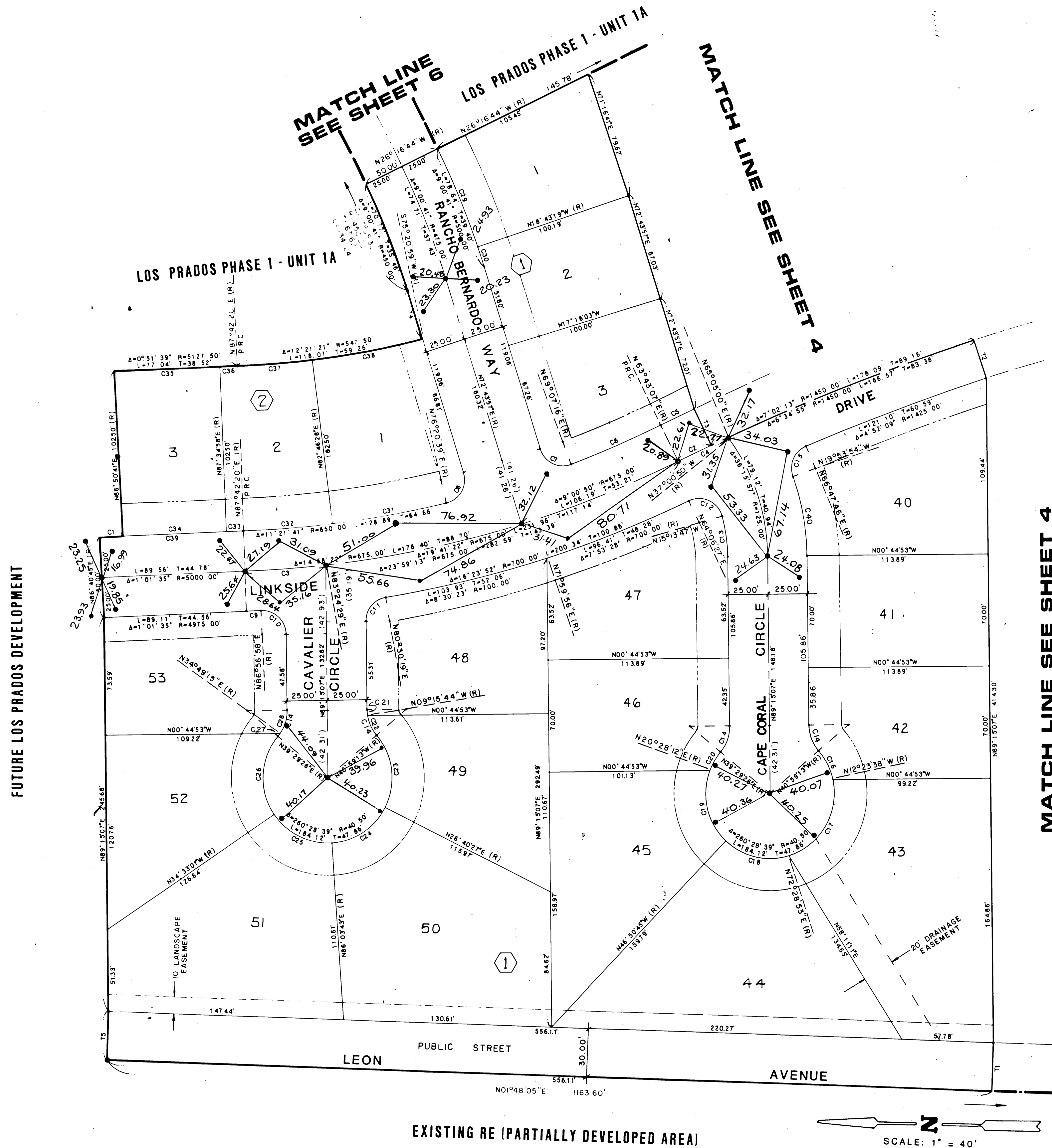


LOS PRADOS PHASE 1 - UNIT 1

A PORTION OF SECTION 36, T. 19 S., R. 60 E., M.D.M., CITY OF LAS VEGAS, CLARK COUNTY, NEVADA



MATCH LINE SEE SHEET 4

LEGEND

- P.O.B. POINT OF BEGINNING
- 8 LOT NUMBER / TOTAL LOTS = 40
- ① BLOCK NUMBER
- T2 COURSE NUMBER
- C3 CURVE NUMBER
- BUILDING SETBACK LINE MINIMUMS:
FRONT = 20' CORNER = 15'
- FOUND POINT AS INDICATED
- SET 5/8" BRASS 4 ALUM. CAP W/BRASS CAP REF., L.S. 6201
- (R) RADIAL LINE

NOTE: ALL STREETS AND PRIVATE DRIVE AND P.O.B. UNLESS OTHERWISE NOTED.

COURSE TABLE SHEET 5 ONLY

NO.	BEARING	DISTANCE
T1	N88°11'55"W	30.00'
T2	N71°39'56"E (R)	25.00'
T3	N64°37'43"E (R)	25.00'
T4	N72°43'57"E	32.25'
T5	S88°11'55"E	30.00'

CURVE TABLE SHEET 5 ONLY

NO.	DELTA	RADIUS	LENGTH	TAN
C1	0°09'56"	5025.00'	14.51'	7.26'
C2	0°54'35"	1450.00'	23.03'	11.51'
C3	4°17'51"	675.00'	50.63'	25.33'
C4	1°21'53"	1450.00'	34.54'	17.27'
C5	0°54'35"	1475.00'	23.42'	11.71'
C6	5°24'09"	650.00'	61.29'	30.67'
C7	93°36'42"	15.00'	24.51'	15.98'
C8	93°36'42"	15.00'	24.51'	15.98'
C9	0°45'22"	700.00'	9.24'	4.62'
C10	92°18'09"	15.00'	24.16'	15.62'
C11	81°15'12"	15.00'	21.27'	12.87'
C12	100°39'46"	15.00'	26.35'	18.09'
C13	14°28'54"	100.00'	25.28'	12.71'
C14	40°14'20"	25.00'	17.56'	9.16'
C15	86°41'40"	15.00'	22.70'	14.16'
C16	28°35'34"	40.50'	20.21'	10.32'
C17	84°52'31"	40.50'	59.99'	37.03'
C18	60°40'22"	40.50'	42.89'	23.70'
C19	67°18'58"	40.50'	47.58'	26.97'
C20	19°01'14"	40.50'	13.44'	6.78'
C21	83°30'51"	25.00'	3.72'	1.86'
C22	31°43'28"	25.00'	13.84'	7.10'
C23	67°39'40"	40.50'	47.83'	27.14'
C24	59°23'16"	40.50'	41.98'	23.10'
C25	59°23'16"	40.50'	44.98'	26.10'
C26	74°02'28"	40.50'	52.34'	30.54'
C27	4°40'12"	25.00'	2.04'	1.02'
C28	35°34'08"	25.00'	15.52'	8.02'
C29	7°33'25"	500.00'	65.95'	33.02'
C30	1°27'15"	500.00'	12.69'	6.35'
C31	6°25'49"	650.00'	72.95'	36.51'
C32	4°55'52"	650.00'	55.94'	27.99'
C33	0°07'22"	5025.00'	10.77'	5.38'
C34	0°44'17"	5025.00'	64.73'	32.37'
C35	0°44'17"	5127.50'	66.05'	33.03'
C36	0°07'22"	5127.50'	10.99'	5.49'
C37	4°55'52"	547.50'	47.12'	23.57'
C38	7°25'29"	547.50'	70.95'	35.52'
C39	1°11'35"	5025.00'	90.01'	45.00'
C40	19°09'01"	150.00'	50.14'	25.50'

5-6-75 Mon Fire Map