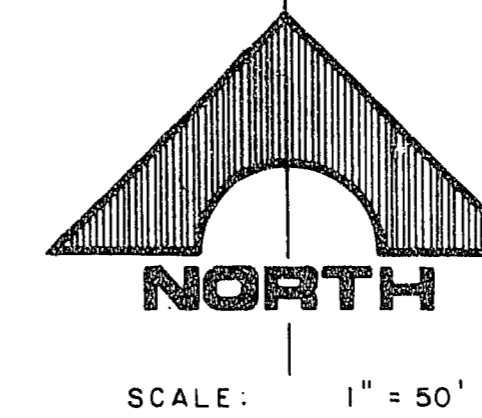


BOOK 861215

LEWIS HOMES - RAINBOW PARK No 8

20774

A PORTION OF THE NORTHWEST QUARTER(NW1/4) OF THE NORTHEAST QUARTER(NE1/4) OF SECT. 27,T.20S., R.60E., M.D.M.
CITY OF LAS VEGAS,
CLARK COUNTY, NEVADA



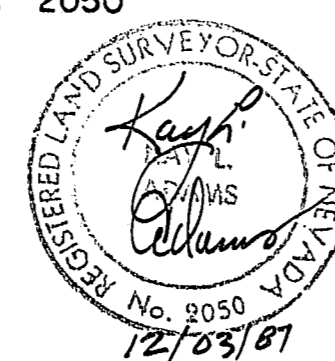
NOTE:
NO ACCESS TO VEGAS DRIVE
FROM THE REAR OF THE ABUTTING
LOTS

UNDEVELOPED

CURVE DATA				
No.	Δ	R	L	T
1	88°54'29"	20.00'	31.03'	19.62'
2	91°05'31"	15.00'	23.85'	15.29'
3	29°19'50"	50.00'	25.60'	13.08'
4	08°32'00"	50.00'	7.45'	3.73'
5	45°45'39"	45.00'	35.94'	18.99'
6	82°06'11"	45.00'	64.48'	39.19'
7	86°39'34"	45.00'	68.06'	42.45'
8	41°12'16"	45.00'	32.36'	16.92'
9	13°06'34"	50.00'	11.45'	5.75'
10	24°44'56"	50.00'	21.60'	10.97'
11	88°54'29"	15.00'	23.28'	14.72'
12	91°05'10"	15.00'	23.85'	15.29'
13	88°54'50"	25.00'	38.80'	24.53'
14	88°54'50"	15.00'	23.28'	14.72'
15	24°37'12"	50.00'	21.49'	10.91'
16	138°09'14"	60.00'	144.67'	156.93'
17	234°37'24"	45.00'	184.27'	00
18	54°37'24"	50.00'	47.67'	25.82'
19	37°51'50"	50.00'	33.04'	17.15'
20	255°43'40"	45.00'	200.85'	00
21	17°33'54"	50.00'	15.33'	7.72'
22	07°03'18"	50.00'	6.16'	3.08'
23	31°33'58"	60.00'	33.06'	16.96'
24	28°38'48"	60.00'	30.00'	15.32'
25	29°45'15"	60.00'	31.16'	15.94'
26	29°45'15"	60.00'	31.16'	15.94'
27	18°25'58"	60.00'	19.30'	9.74'
28	20°46'04"	50.00'	18.12'	9.16'
29	03°51'08"	50.00'	3.36'	1.68'
30	16°28'39"	45.00'	12.94'	6.52'
31	73°31'21"	45.00'	57.74'	33.62'
32	83°17'01"	45.00'	65.41'	40.01'
33	61°20'23"	45.00'	48.18'	26.69'
34	02°52'35"	50.00'	2.51'	1.26'
35	51°44'49"	50.00'	45.16'	24.25'

LEGEND:

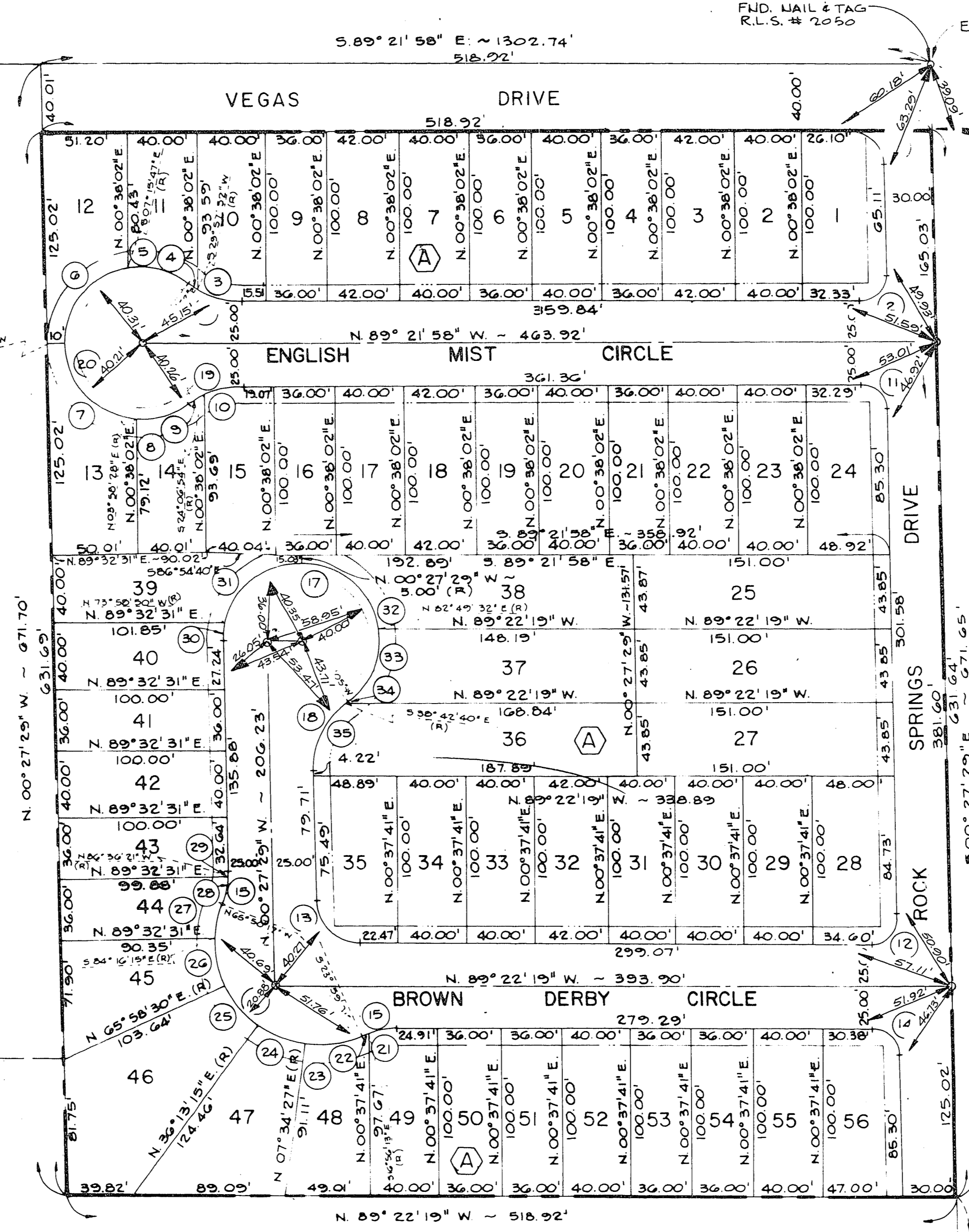
- ③ CURVE NUMBER
- II LOT NUMBER
- Ⓐ BLOCK NUMBER
- LEGAL BOUNDARY
- SETBACK: 10' MIN. FRONT YARD (16' MIN. FROM R/W TO GARAGE DOOR OPENING)
10' MIN. SIDEYARD CORNER
- ⊙ FND. MON. AS SHOWN
- SET CONCRETE MON. & BRASS CAP
- SET 5/8" REBAR AND ALUM. CAP RLS 2050 WITH BRASS CAP REFERENCE TIES SET IN TOP OF CURB



SURVEYOR'S CERTIFICATE

THIS IS TO CERTIFY THAT THE MONUMENTS HAVE BEEN SET AND TIES ESTABLISHED AS SHOWN HEREON.

KAY L. ADAMS
REGISTERED LAND SURVEYOR
NEVADA CERTIFICATE NO. 2050

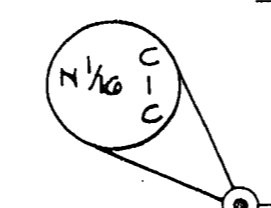


LOT AREA TABULATION

BLOCK	LOT	AREA (SQ. FT.)
A	1	4,535
	2	4,000
	3	4,200
	4	3,600
	5	4,000
	6	3,600
	7	4,000
	8	4,200
	9	3,600
	10	3,949
	11	3,356
	12	4,938
	13	4,982
	14	3,352
	15	3,938
	16	4,000
	17	4,200
	18	4,000
	19	4,000
	20	4,000
	21	4,000
	22	4,000
	23	4,000
	24	4,750
	25	6,621
	26	6,621
	27	6,621
	28	4,844
	29	4,000
	30	4,000
	31	4,000
	32	4,200
	33	4,000
	34	4,000
	35	4,667
	36	8,007
	37	6,726
	38	7,127
	39	4,688
	40	4,008
	41	3,600
	42	4,000
	43	3,400
	44	3,427
	45	4,750
	46	8,182
	47	5,781
	48	4,001
	49	3,988
	50	3,600
	51	3,600
	52	4,000
	53	3,600
	54	3,600
	55	4,000
A	56	4,558

UNDEVELOPED

L. H. RAINBOW PARK NO. 8
BK. 22 PG. 22



N. 89° 22' 41" W. ~ 1293.21
FND. 5/8" REBAR & AL. CAP R.L.S. NO. 2050

CARMEN BLVD.

NE 1/16 FND. 5/8" REBAR & AL. CAP R.L.S. NO. 2050

MONUMENT TIE MAP

058-2030-8 SHEET 2 OF 2

Book 36 Page 6

5-6-114