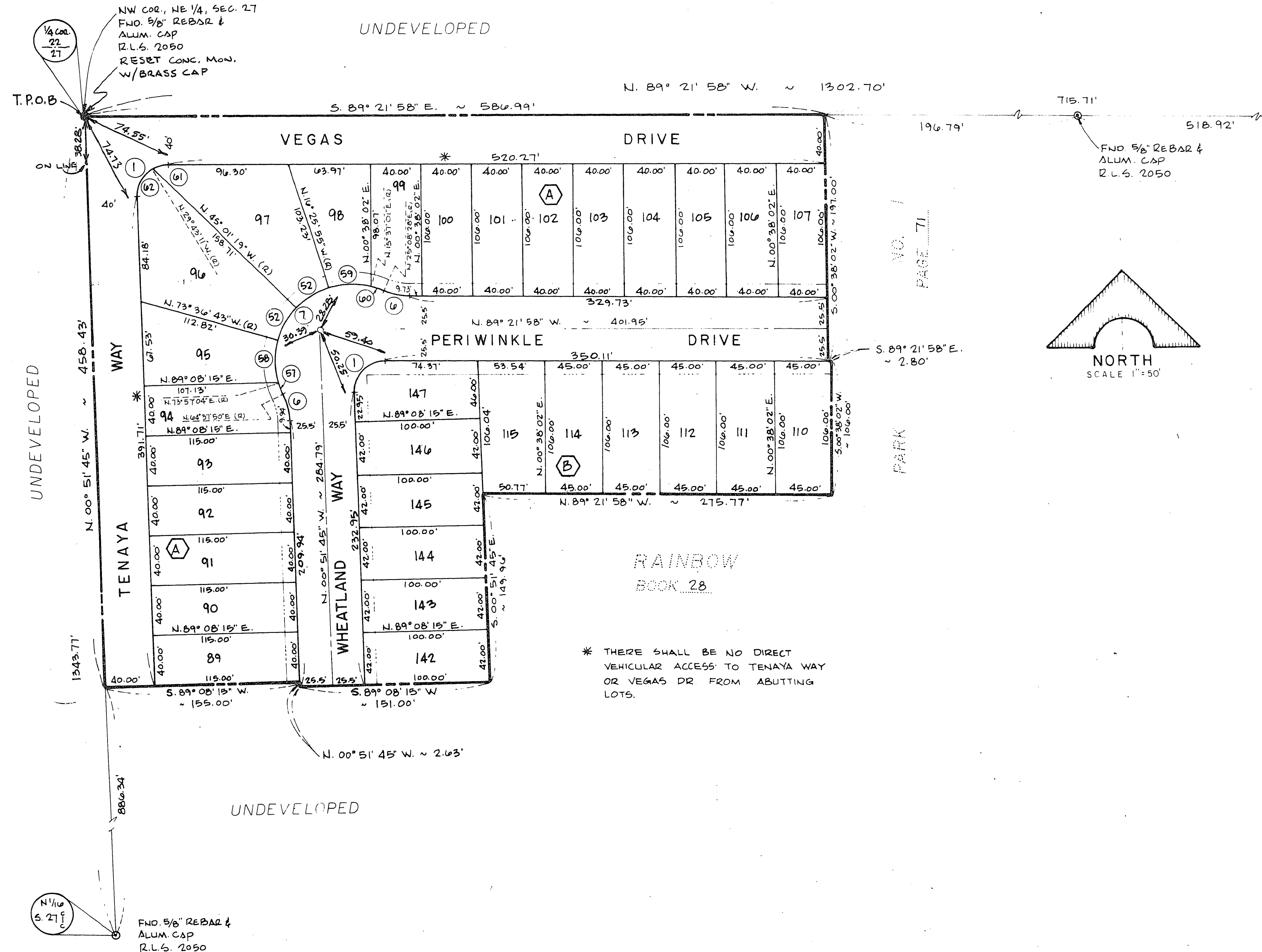


LEWIS HOMES - RAINBOW PARK N° 3

A PORTION OF THE NORTHWEST QUARTER (NW1/4) OF THE NORTHEAST QUARTER (NE1/4) OF SECT. 27, T20S., R.60E., MDM. CITY OF LAS VEGAS, CLARK COUNTY, NEVADA



CURVE DATA

NO.	Δ	R	L	T
1	91° 29' 47"	25.00'	39.92'	25.60'
6	24° 30' 26"	50.00'	21.39'	10.86'
7	140° 30' 38"	61.00'	149.60'	169.95'
52	28° 35' 24"	61.00'	30.44'	15.54'
57	09° 19' 14"	61.00'	9.92'	4.97'
58	32° 26' 13"	61.00'	34.53'	17.74'
59	32° 02' 56"	61.00'	34.12'	17.52'
60	09° 31' 27"	61.00'	10.14'	5.08'
61	30° 21' 13"	25.00'	13.24'	6.78'
62	61° 08' 34"	25.00'	26.68'	14.77'

- LEGEND
- ⑦ CURVE NUMBER
 - 117 LOT NUMBER
 - ⓑ BLOCK NUMBER
 - LEGAL BOUNDARY
 - SETBACK: 10' MIN. FRONT YARD
10' MIN. SIDE YARD CORNER
 - FND. MON AS SHOWN
 - SET CONCRETE MON. & BRASS CAP
 - SET NAIL & BRASS TAG RLS 2050 W/
BRASS CAP REFERENCE TIES SET IN
TOP OF CURBS

MONUMENT TIE MAP

SURVEYOR'S CERTIFICATE
THIS IS TO CERTIFY THAT THE MONUMENTS HAVE BEEN SET AND TIES ESTABLISHED AS SHOWN HEREON.

Ray Adams
RAY ADAMS
REGISTERED LAND SURVEYOR
NEVADA CERTIFICATE NO. 2050

