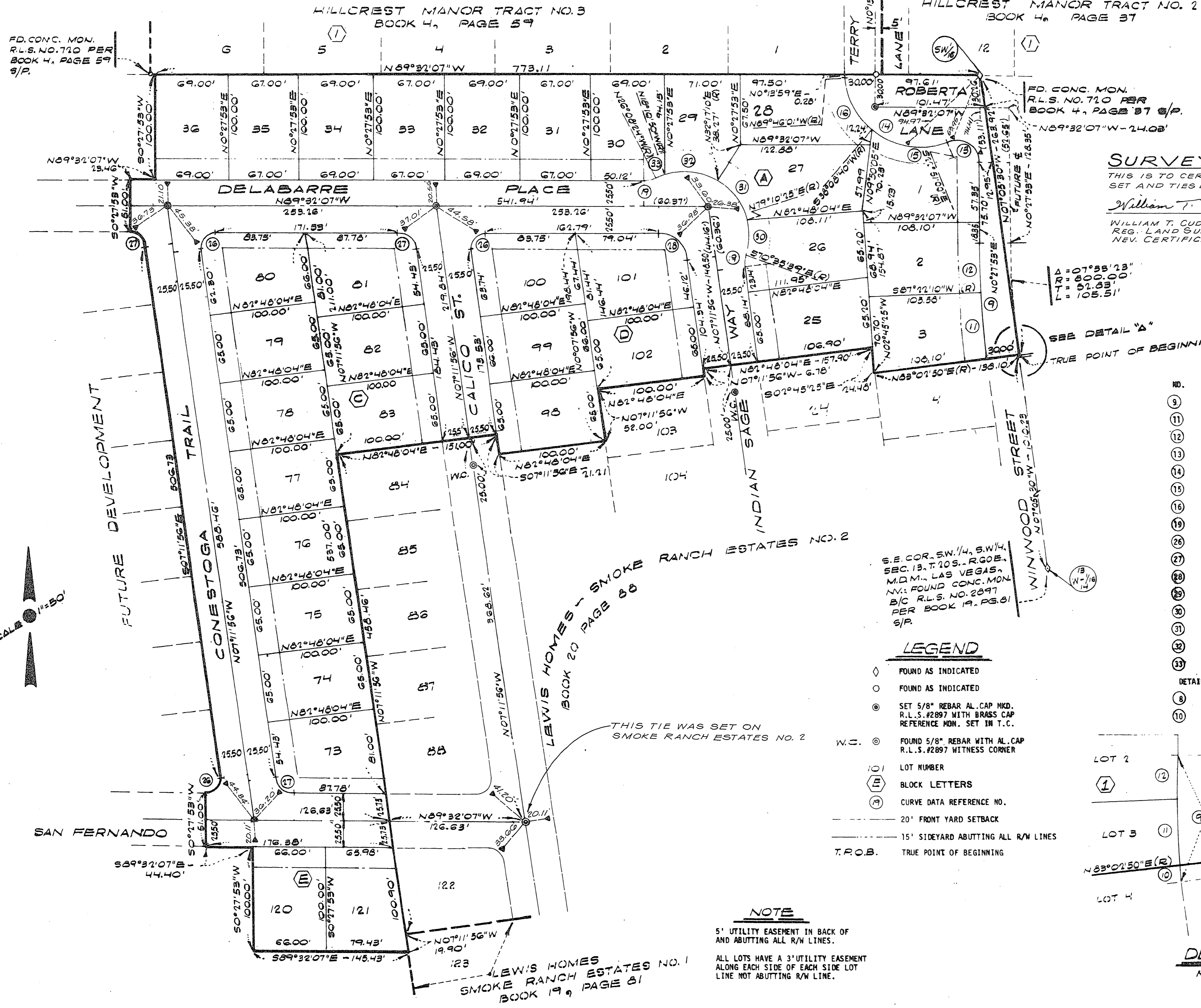


# LEWIS HOMES - SMOKE RANCH ESTATES NO. 4

A PORTION OF THE SW 1/4 OF THE SW 1/4 OF SECTION 13, T10S., R60E., M.D.M., CITY OF LAS VEGAS, CLARK COUNTY, NV.  
 & TIE SHEET

**TIE SHEET LEGEND**  
 ▲ BRASS CAP IN TOP OF CURB  
 ○ 5/8 REBAR W/AL CAP RLS 2897  
 ◊ FD. CONC. MON. & ADDED TIES  
**NOTE:**  
 1. ALL FRONT TIES ARE SAW CUT IN TOP OF CONCRETE.



**SURVEYORS CERTIFICATE**  
 THIS IS TO CERTIFY, THAT THE MONUMENT HAS BEEN SET AND TIES ESTABLISHED AS SHOWN HEREON.  
 William T. Cuddy 11/21/78  
 WILLIAM T. CUDDY DATE  
 REG. LAND SURVEYOR  
 NEV. CERTIFICATE NO. 2897

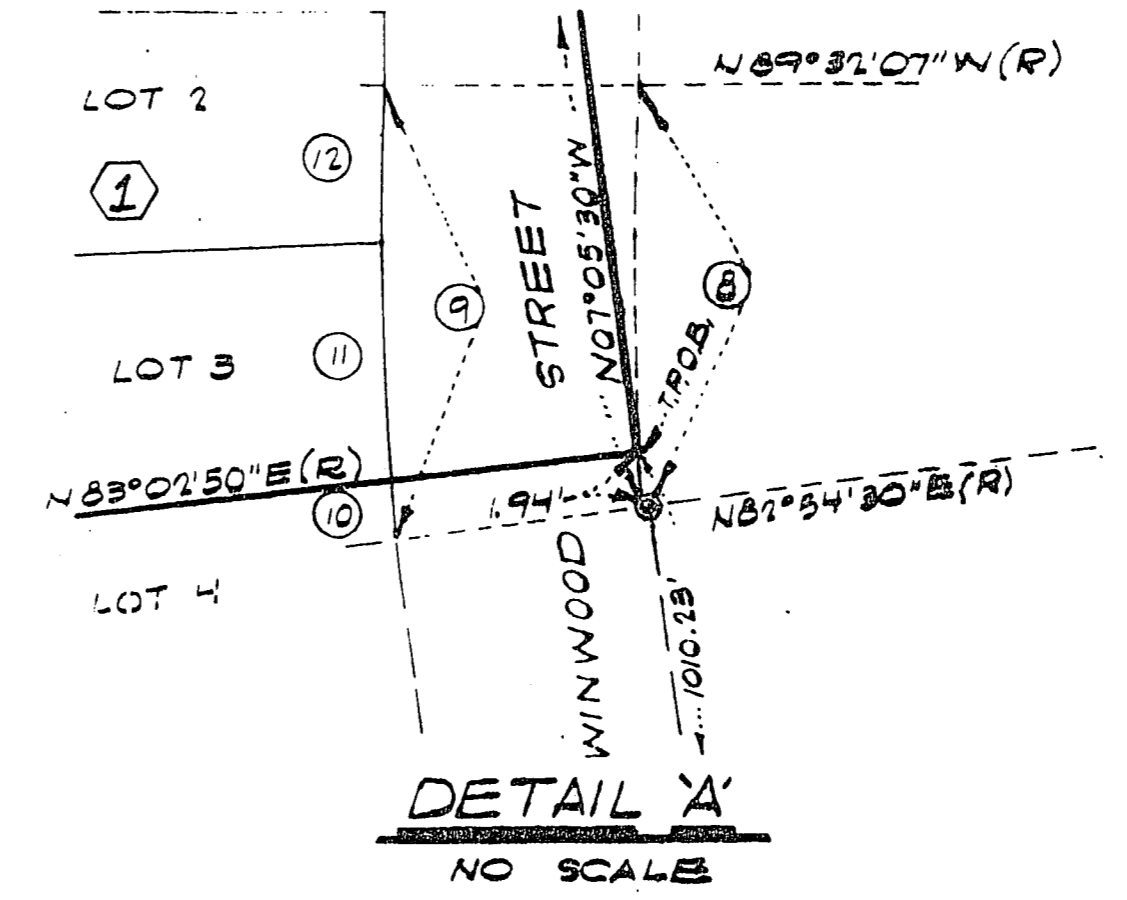
**CURVE DATA**

NO.	DATA	RADIUS	TANGENT	LENGTH
9	07-33-23	830.00	54.81	109.46
11	04-19-20	830.00	31.32	62.62
12	03-05-43	830.00	22.42	44.68
13	113-18-53	20.00	30.40	39.36
14	113-04-59	70.00	105.88	138.16
15	60-59-40	70.00	41.83	74.53
16	52-05-19	70.00	34.21	63.04
26	26-35-17	25.00	5.91	11.61
28	97-39-49	15.00	17.15	25.57
27	82-20-11	15.00	13.12	21.56
28	82-20-11	25.00	21.85	38.93
29	135-32-45	60.00	146.83	141.94
30	30-13-56	60.00	16.21	31.66
31	46-53-15	60.00	26.02	49.10
32	50-28-00	60.00	28.28	52.88
33	07-57-34	60.00	4.17	8.33

DETAIL 'A': ADDITIONAL CURVE DATA

8	07-33-23	800.00	52.83	105.91
10	0-08-20	830.00	1.01	2.01

- LEGEND**
- ◊ FOUND AS INDICATED
  - FOUND AS INDICATED
  - ⊙ SET 5/8" REBAR AL. CAP MKD. R.L.S. #2897 WITH BRASS CAP REFERENCE MON. SET IN T.C.
  - ⊙ FOUND 5/8" REBAR WITH AL. CAP R.L.S. #2897 WITNESS CORNER
  - ① LOT NUMBER
  - Ⓐ BLOCK LETTERS
  - Ⓗ CURVE DATA REFERENCE NO.
  - 20' FRONT YARD SETBACK
  - 15' SIDEYARD ABUTTING ALL R/W LINES
  - T.P.O.B. TRUE POINT OF BEGINNING



**NOTE**  
 5' UTILITY EASEMENT IN BACK OF AND ABUTTING ALL R/W LINES.  
 ALL LOTS HAVE A 3' UTILITY EASEMENT ALONG EACH SIDE OF EACH SIDE LOT LINE NOT ABUTTING R/W LINE.