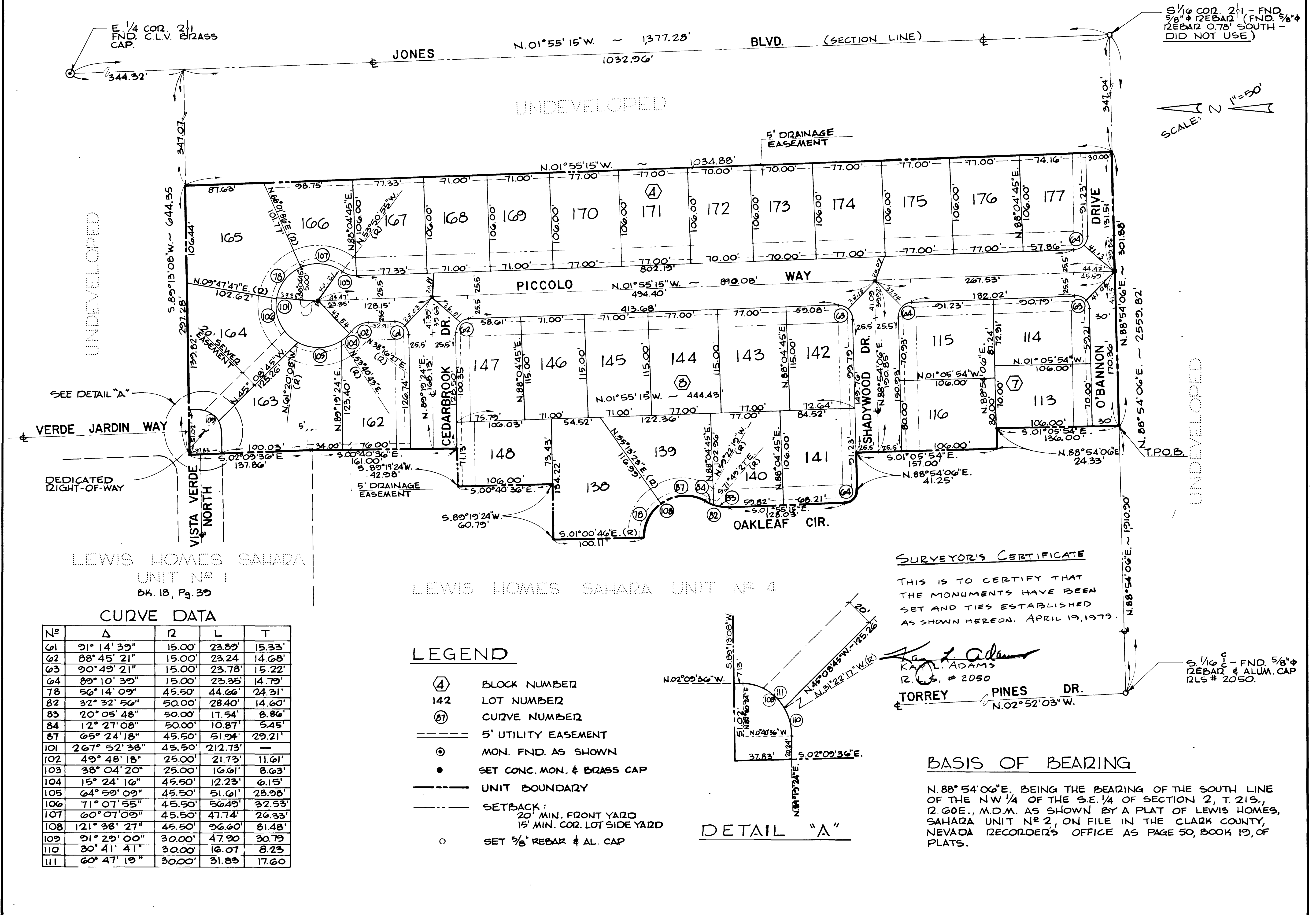


LEWIS HOMES SAHARA UNIT NO. 5

A PORTION OF THE S.E. 1/4, SEC. 2, T.21S, R.60E, M.D.M. CITY OF LAS VEGAS CLARK COUNTY, NEVADA

MONUMENT TIE MAP

(ALL TIE POINTS ARE LEAD & BRASS NAIL IN T.C.)



LEWIS HOMES SAHARA UNIT No 1
BK. 18, P. 39

LEWIS HOMES SAHARA UNIT No 4

CURVE DATA

No	Δ	R	L	T
61	91° 14' 39"	15.00'	23.89'	15.33'
62	88° 45' 21"	15.00'	23.24'	14.68'
63	90° 49' 21"	15.00'	23.78'	15.22'
64	89° 10' 35"	15.00'	23.35'	14.79'
78	56° 14' 09"	45.50'	44.66'	24.31'
82	32° 32' 56"	50.00'	28.40'	14.60'
83	20° 05' 48"	50.00'	17.54'	8.86'
84	12° 27' 08"	50.00'	10.87'	5.45'
87	65° 24' 18"	45.50'	51.94'	29.21'
101	267° 52' 38"	45.50'	212.73'	—
102	49° 48' 18"	25.00'	21.73'	11.61'
103	38° 04' 20"	25.00'	16.61'	8.63'
104	15° 24' 16"	45.50'	12.23'	6.15'
105	64° 59' 09"	45.50'	51.61'	28.98'
106	71° 07' 55"	45.50'	56.49'	32.53'
107	60° 07' 09"	45.50'	47.74'	26.33'
108	121° 38' 27"	45.50'	96.60'	81.48'
109	91° 29' 00"	30.00'	47.90'	30.79'
110	30° 41' 41"	30.00'	16.07'	8.23'
111	60° 47' 19"	30.00'	31.83'	17.60'

LEGEND

- ④ BLOCK NUMBER
- 142 LOT NUMBER
- ⑧ CURVE NUMBER
- 5' UTILITY EASEMENT
- MON. FND. AS SHOWN
- SET CONC. MON. & BRASS CAP
- UNIT BOUNDARY
- SETBACK:
20' MIN. FRONT YARD
15' MIN. COR. LOT SIDE YARD
- SET 3/8" REBAR & AL. CAP

SURVEYOR'S CERTIFICATE

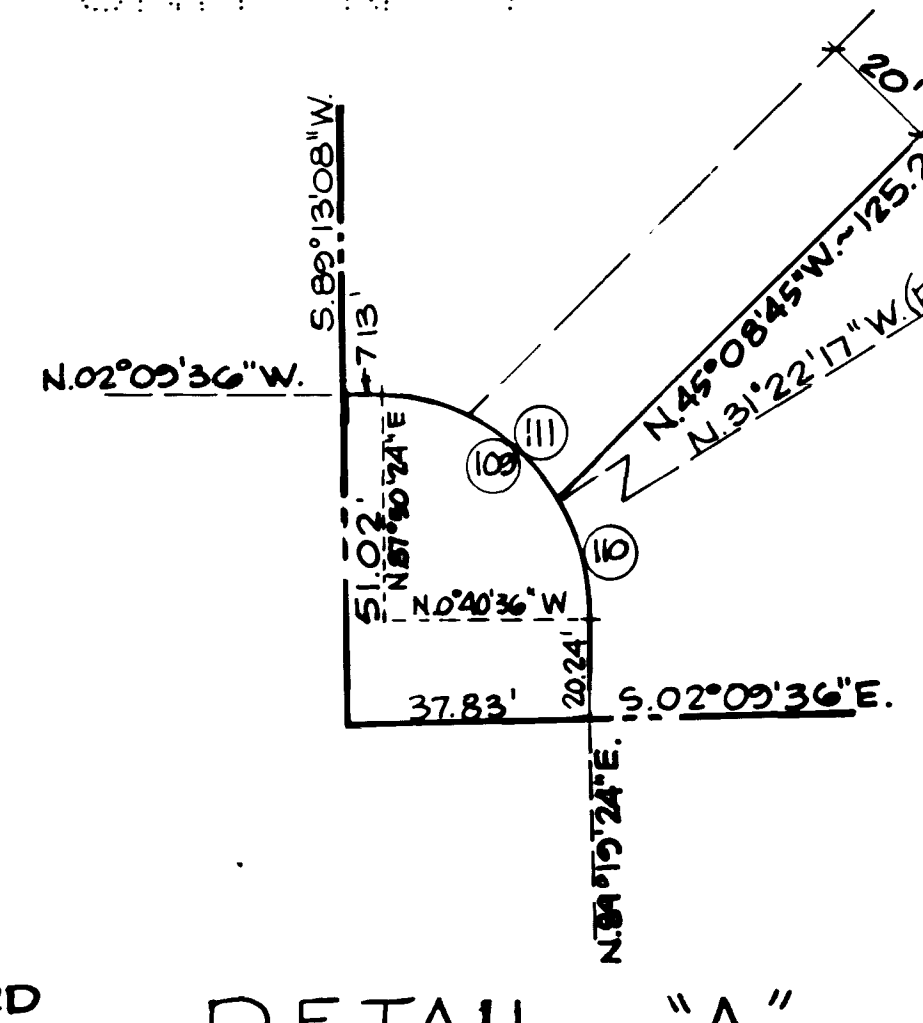
THIS IS TO CERTIFY THAT THE MONUMENTS HAVE BEEN SET AND TIES ESTABLISHED AS SHOWN HEREON. APRIL 19, 1979.

Ralph Adams
RALPH ADAMS
R.S. # 2050

TORREY PINES DR.
N.02°52'03"W.

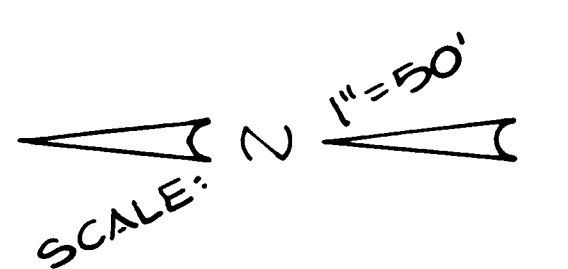
BASIS OF BEARING

N.88°54'06"E. BEING THE BEARING OF THE SOUTH LINE OF THE NW 1/4 OF THE S.E. 1/4 OF SECTION 2, T.21S., R.60E., M.D.M. AS SHOWN BY A PLAT OF LEWIS HOMES, SAHARA UNIT No 2, ON FILE IN THE CLARK COUNTY, NEVADA RECORDER'S OFFICE AS PAGE 50, BOOK 19, OF PLATS.



DETAIL "A"

S 1/16 COR. 2" - FND. 3/8" REBAR (FND. 3/8" REBAR 0.78' SOUTH - DID NOT USE)



UNDEVELOPED

S 1/16 COR. - FND. 5/8" REBAR & ALUM. CAP ILS # 2050.

