

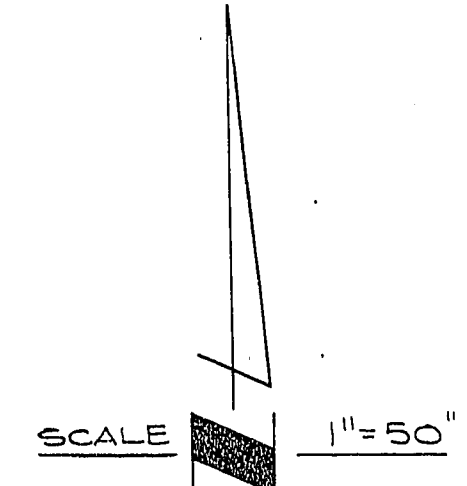
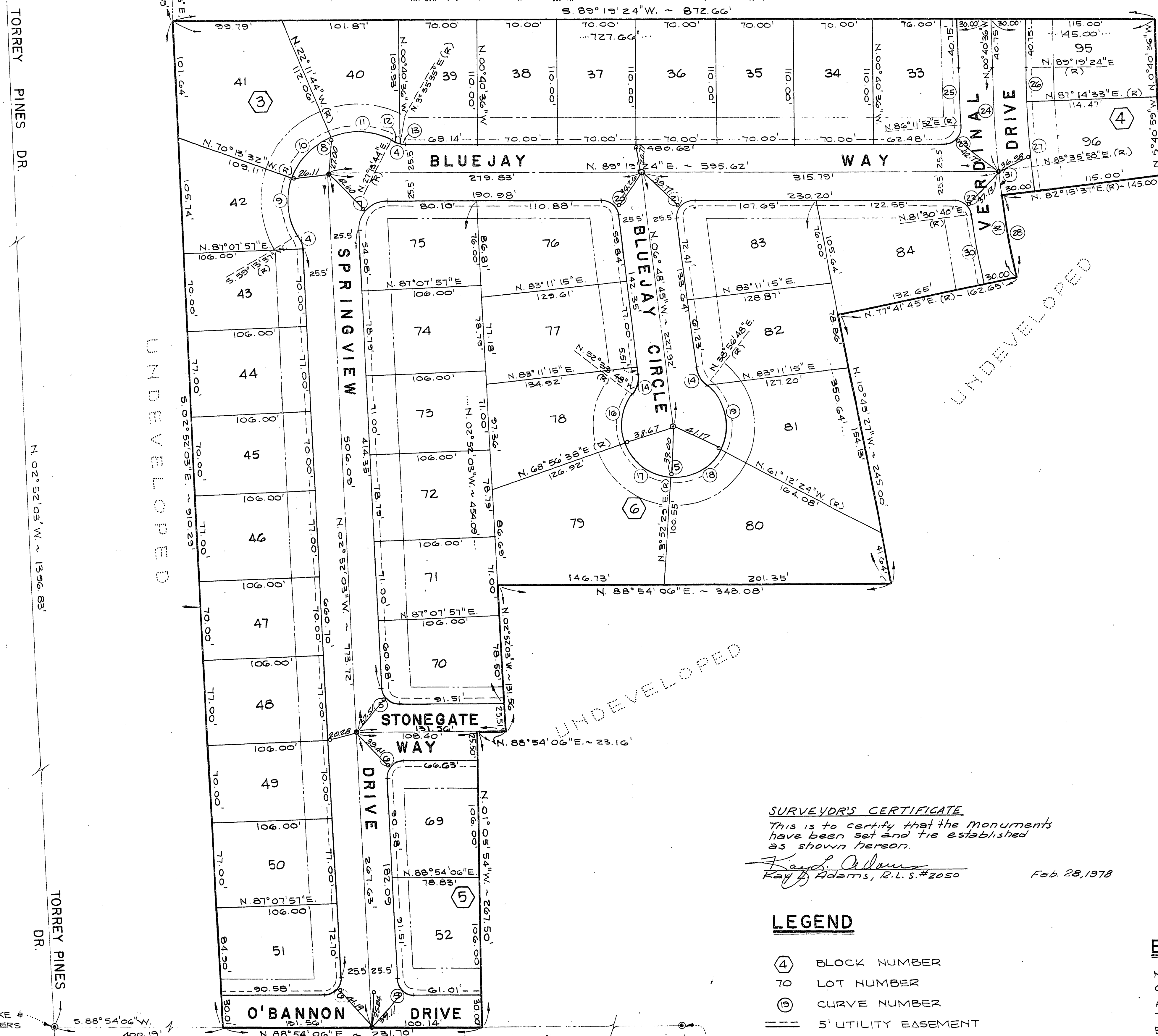
LEWIS HOMES - SAHARA ~ UNIT NO. 2

FND. U.S.G.L.O. OAKLEY BLVD.
BRASS CAP
CTR. 1/4 COR., SEC. 2,
T. 21 S., R. 60 E. MDM

A PORTION OF THE S.E. 1/4, SECTION 2, T. 21 S., R. 60 E., M.D.M.
CITY OF LAS VEGAS,
CLARK COUNTY, NEVADA

LEWIS HOMES - SAHARA ~ UNIT NO. 1 BK. 18, PG. 39

S. 89° 19' 24" W. ~ 872.66'



CURVE DATA

Sta	Δ	R	L	T
4	27-54-20	25.00	12.18	6.21
5	88-13-51	15.00	23.10	14.54
6	91-46-09	15.00	24.03	15.47
7	92-11-27	25.00	40.23	25.98
8	148-00-07	61.00	151.57	212.15
9	50-32-51	61.00	53.82	28.80
10	48-01-48	61.00	51.14	27.18
11	49-25-28	61.00	52.62	28.07
12	23-38-09	25.00	10.31	5.23
13	04-16-11	25.00	1.86	0.93
14	44-14-57	25.00	19.31	10.16
15	268-29-54	45.50	213.22	—
16	58-29-34	45.50	46.45	25.48
17	65-04-09	45.50	51.67	29.03
18	65-04-53	45.50	51.68	29.03
19	79-51-18	45.50	63.41	38.08
20	83-51-51	15.00	21.96	13.47
21	96-08-09	15.00	25.17	16.70
22	82-11-16	15.00	21.52	13.08
23	93-07-32	15.00	24.38	15.84
24	05-43-26	950.00	94.91	47.49
25	03-07-32	980.00	53.46	26.73
26	02-04-51	920.00	33.41	16.71
27	04-58-56	920.00	80.00	40.03
28	04-33-52	950.00	75.68	37.86
30	03-48-55	980.00	65.26	32.64
31	01-20-21	950.00	22.20	11.10
32	05-54-13	950.00	27.89	48.99

SURVEYOR'S CERTIFICATE

This is to certify that the monuments have been set and tie established as shown hereon.

Ray Adams
Ray Adams, R.L.S. #2050

Feb. 28, 1978

LEGEND

- ④ BLOCK NUMBER
- 70 LOT NUMBER
- ⊙ CURVE NUMBER
- 5' UTILITY EASEMENT
- 25' FRONT YARD SETBACK
- 15' SIDE YARD SETBACK
- Set 5/8" Rebar @ 41" C/O
- MONUMENT FND. AS INDICATED
- Set Lead & Tack in T.C.
- SET CON. MON. W/B.C. #2050

BASIS OF BEARING

N. 89° 19' 24" E. BEING THE BEARING OF THE NORTH LINE OF THE SE 1/4 OF SECTION 2, T. 21 S., R. 60 E., M.D.M., AS SHOWN BY A MAP ON FILE IN THE OFFICE OF THE CLARK COUNTY NEVADA RECORDER AS BOOK 18, PAGE 39 OF PLATS.

MONUMENT TIE MAP