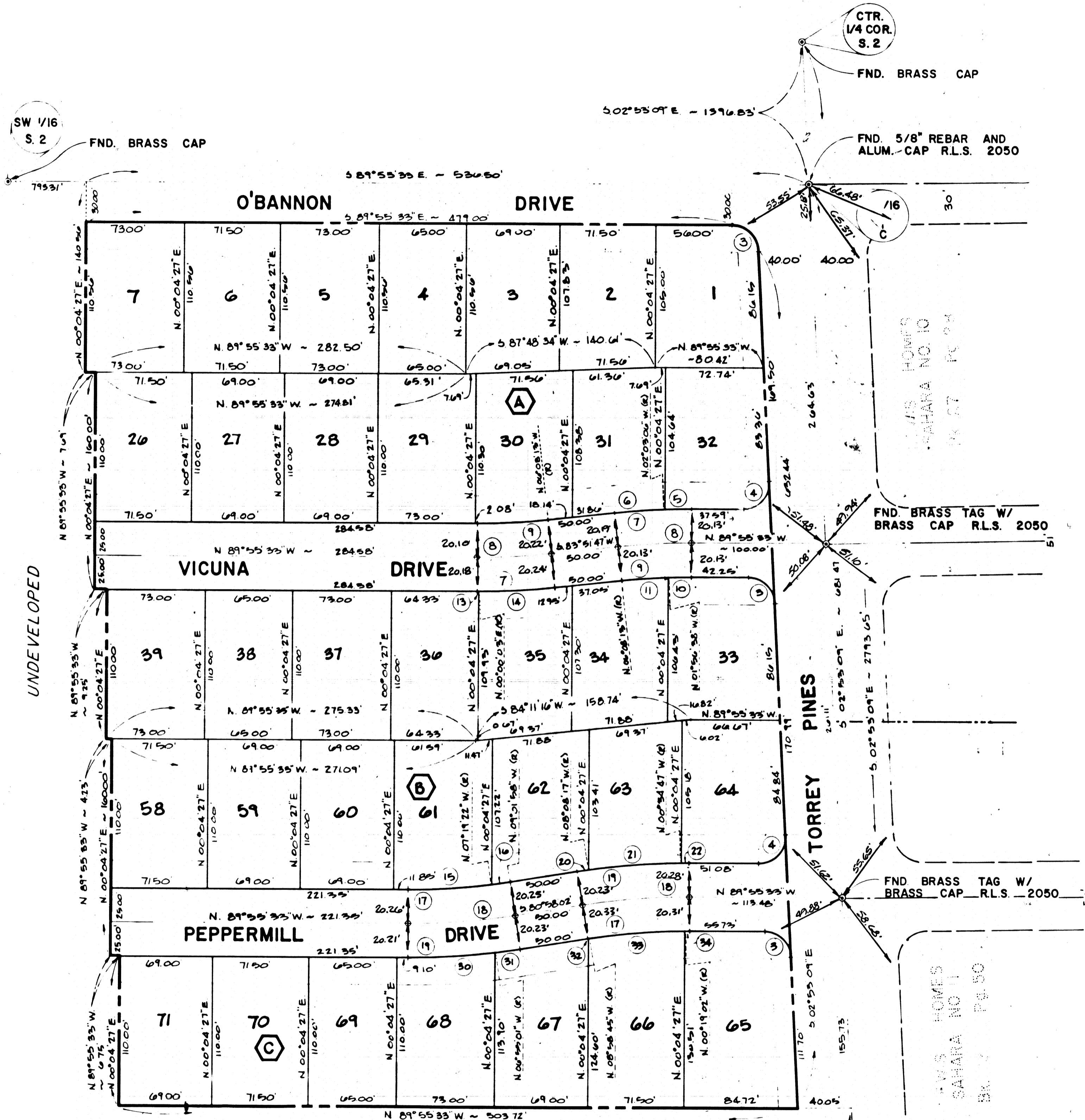


LEWIS HOMES - SAHARA NO. 12-A

A PORTION OF THE SOUTH HALF (S 1/2) OF THE SOUTHWEST QUARTER (SW 1/4)
OF SECTION 2, T. 21 S., R. 60 E., M.D.M.
CITY OF LAS VEGAS, CLARK COUNTY, NEVADA



CURVE DATA

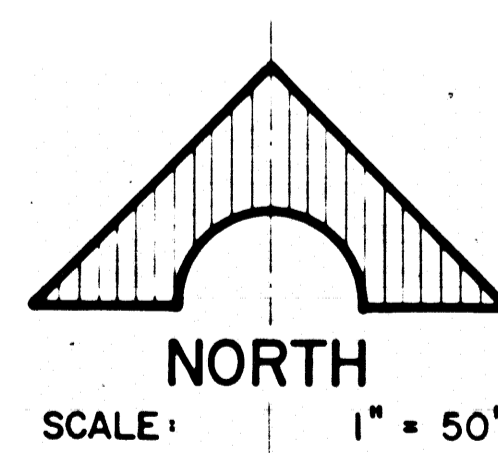
NO	Δ	R	L	T
3	87° 02' 24"	20.00'	30.38'	18.99'
4	92° 57' 30"	20.00'	32.44'	21.06'
5	02° 07' 35"	529.00'	19.48'	9.74'
6	04° 06' 07"	529.00'	37.43'	18.73'
7	06° 12' 40"	529.00'	94.91'	28.48'
8	08° 12' 40"	500.00'	64.20'	27.13'
9	06° 12' 40"	479.00'	61.41'	26.77'
10	02° 01' 06"	479.00'	16.73'	8.37'
11	04° 11' 34"	479.00'	34.76'	17.37'
12	00° 04' 24"	529.00'	0.67'	0.34'
13	06° 15' 16"	529.00'	56.24'	28.15'
14	07° 23' 49"	479.00'	61.32'	30.70'
15	01° 42' 36"	479.00'	18.18'	7.09'
16	04° 06' 25"	479.00'	79.60'	37.83'
17	04° 06' 25"	929.00'	79.47'	39.82'
18	04° 06' 25"	929.00'	83.45'	41.81'
19	07° 53' 30"	529.00'	69.26'	34.63'
20	00° 53' 41"	529.00'	8.20'	4.10'
21	07° 53' 30"	529.00'	69.26'	34.63'
22	00° 39' 14"	529.00'	6.99'	3.00'
23	06° 59' 28"	529.00'	64.46'	32.07'
24	02° 06' 56"	529.00'	19.39'	9.69'
25	00° 03' 13"	479.00'	0.44'	0.22'
26	08° 39' 45"	479.00'	71.81'	39.97'
27	00° 23' 29"	479.00'	3.24'	1.62'

NOTE

VEHICULAR ACCESS TO TORREY PINES DRIVE FROM THE ABUTTING LOTS IS PROHIBITED.

LEGEND

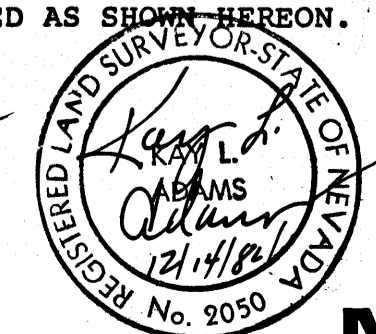
- 33 LOT NUMBER
- A BLOCK NUMBER
- 5 CURVE NUMBER
- LEGAL BOUNDARY
- SETBACK:
 - 20' MIN. FRONT YARD
 - 15' MIN. SIDE YARD - CORNER
- FND. MON. AS SHOWN
- SET CONCRETE MON. & BRASS CAP
- SET NAIL AND BRASS TAG W/ BRASS CAP REF. TIES SET IN T.O.C.



SURVEYOR'S CERTIFICATE

THIS IS TO CERTIFY THAT THE MONUMENTS HAVE BEEN SET AND TIES ESTABLISHED AS SHOWN HEREON.

Kay L. Adams
KAY L. ADAMS
REGISTERED LAND SURVEYOR
NEVADA CERTIFICATE NO. 2050



MONUMENT TIE MAP

T.B. BOOK 3, P. 85