

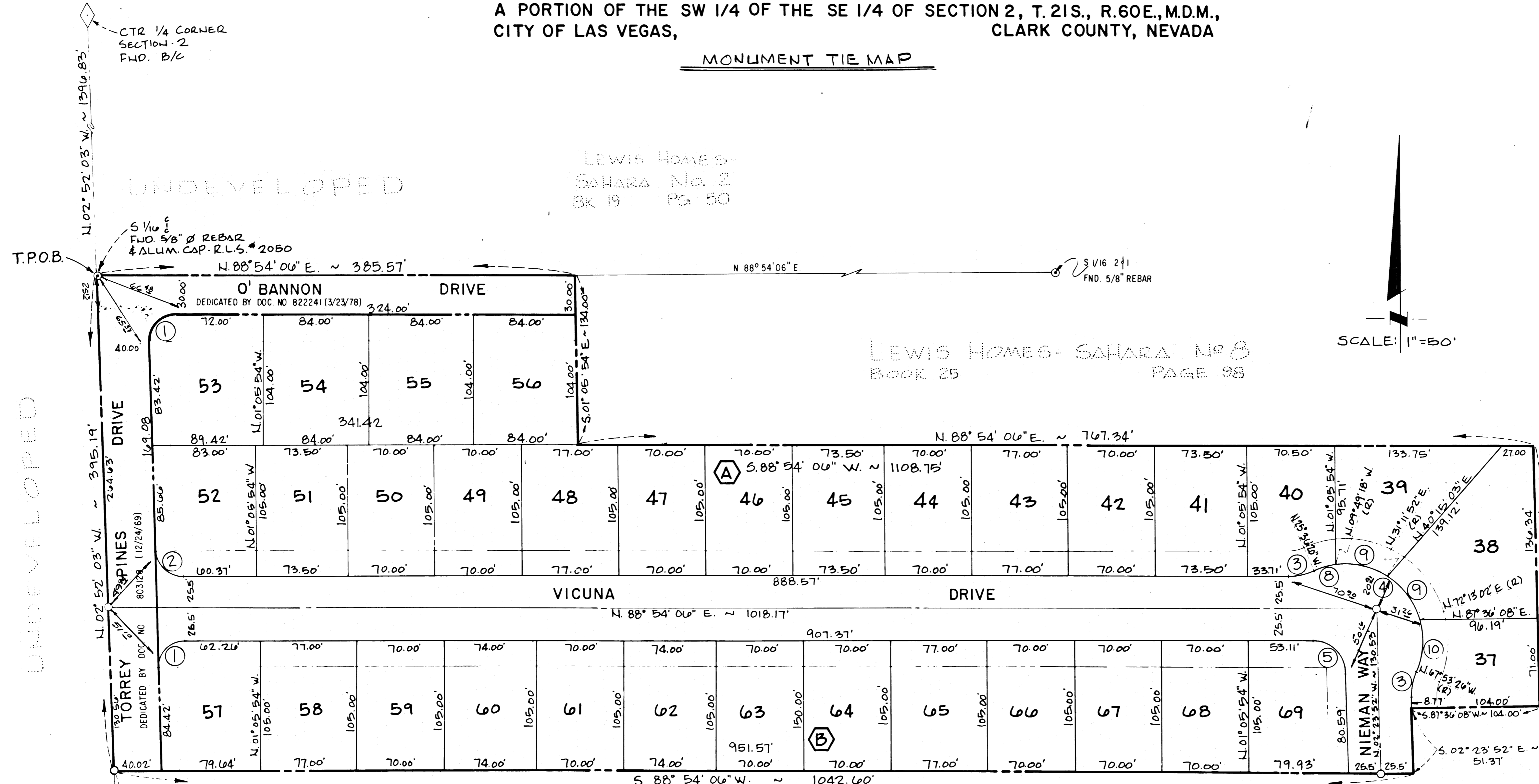
Book 1434

LEWIS HOMES - SAHARA NO. 10

1393706

A PORTION OF THE SW 1/4 OF THE SE 1/4 OF SECTION 2, T. 21S., R. 60E., M.D.M.,
CITY OF LAS VEGAS, CLARK COUNTY, NEVADA

MONUMENT TIE MAP



UNDEVELOPED

LEWIS HOMES - SAHARA No. 2
BK 19 PG 50

LEWIS HOMES - SAHARA No. 8
BOOK 25 PAGE 98

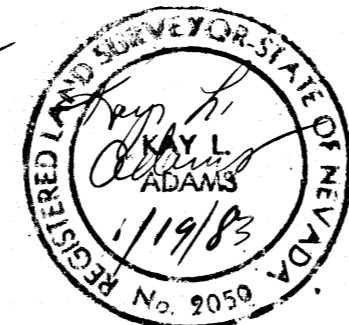
UNDEVELOPED

UNDEVELOPED

SURVEYOR'S CERTIFICATE

THIS IS TO CERTIFY THAT THE MONUMENTS HAVE BEEN SET AND TIES ESTABLISHED AS SHOWN HEREON ALL REFERENCES ARE TO BRASS CAP MONUMENTS SET IN TOP OF CURB UNLESS SHOWN OTHERWISE.

KAY L. ADAMS *Kay L. Adams*
REGISTERED LAND SURVEYOR
NEVADA CERTIFICATE NO. 2050



BASIS OF BEARING

NORTH 88° 54' 06" EAST, BEING THE BEARING OF THE SOUTH LINE OF THE NORTHWEST QUARTER (NW 1/4) OF THE SOUTHEAST QUARTER (SE 1/4) OF SECTION 2, TOWNSHIP 21 SOUTH, RANGE 60 EAST, M. D. M., AS SHOWN BY A PLAT OF LEWIS HOMES - SAHARA UNIT NO. 2 ON FILE IN THE CLARK COUNTY, NEVADA RECORDER'S OFFICE AS BOOK 19, PAGE 50 OF PLATS.

LEGEND

- ① LOT NUMBER
- Ⓐ BLOCK NUMBER
- ③ CURVE NUMBER
- LEGAL BOUNDARY
- SETBACK:
 - 20' MIN. FRONT YARD
 - 15' MIN. SIDE YARD-CORNER
- ⊙ FND. MON. AS SHOWN
- SET CONCRETE MON. & BRASS CAP
- SET NAIL AND BRASS TAG R.L.S. 2050 WITH BRASS CAP REFERENCE TIES SET IN TOP OF CURBS.

CURVE DATA

NO.	Δ	R	L	T
1	91° 46' 09"	20.00'	32.03'	20.63'
2	88° 13' 51"	20.00'	30.80'	19.39'
3	24° 30' 26"	50.00'	21.39'	10.86'
4	137° 42' 54"	61.00'	146.62'	157.74'
5	88° 42' 02"	25.00'	38.70'	24.44'
8	15° 47' 02"	61.00'	16.80'	8.46'
9	41° 01' 10"	61.00'	43.67'	22.82'
10	39° 53' 32"	61.00'	42.47'	22.14'

LEWIS HOMES - SAHARA No. 9
BOOK 26 PAGE 20