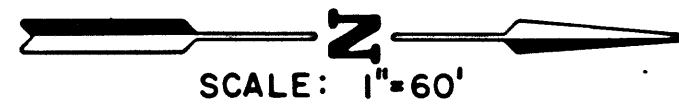


LAKES ESTATES UNIT No. 2

BEING A PORTION OF THE E. 1/2 SECTION 7, TOWNSHIP 21 SOUTH, RANGE 60 EAST, M.D.M.



MONUMENT TIE MAP

LINE DATA TABLE

LABEL	BEARING	DISTANCE
T1	N 00° 26' 29" E	12.99
T2	N 00° 26' 29" E	16.00
T3	N 52° 14' 52" W	10.16
T4	N 09° 24' 56" E	10.00
T5	N 00° 26' 29" E	10.13

CURVE DATA TABLE

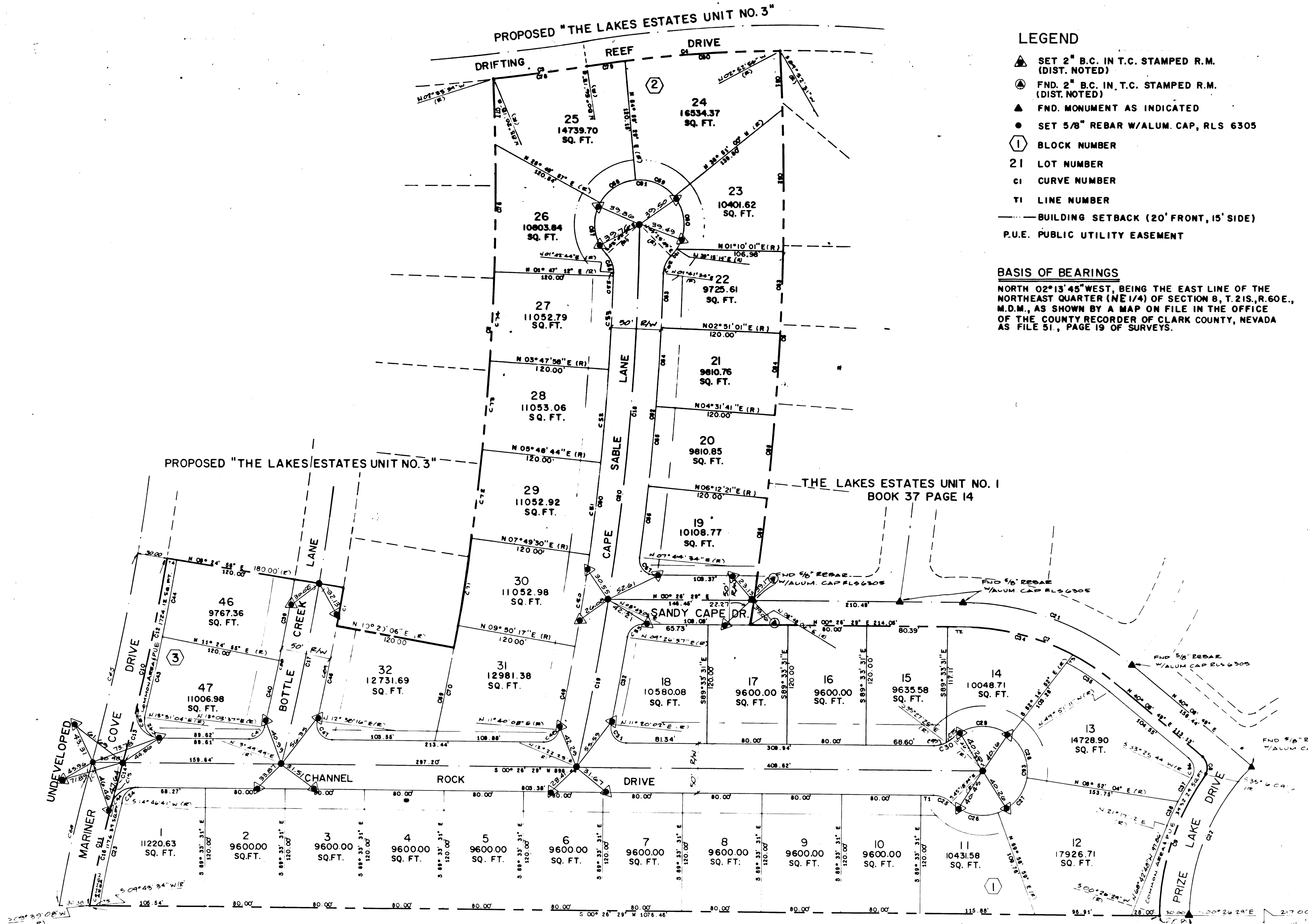
LABEL	RADIUS	CENTRAL ANGLE	ARC LENGTH	TAN. LENGTH
C1	2441.90	00° 51' 11"	39.19	19.50
C2	2561.90	17° 54' 05"	576.87	289.68
C3	2283.11	02° 24' 05"	95.89	47.85
C4	1250.00	08° 56' 18"	195.01	97.70
C5	2851.90	11° 41' 02"	581.57	291.80
C6	2851.90	01° 00' 51"	50.47	25.24
C7	242.29	39° 42' 20"	167.90	87.48
C8	15.50	85° 07' 20"	23.03	14.23
C9	247.00	34° 49' 40"	150.14	77.47
C10	2261.90	05° 55' 20"	233.80	117.00
C11	1270.00	05° 41' 07"	128.02	63.06
C12	2261.90	03° 54' 11"	154.08	77.07
C13	2261.90	01° 26' 54"	57.18	28.59
C14	2261.90	00° 34' 15"	22.54	11.27
C15	1270.00	01° 02' 03"	22.92	11.46
C16	1270.00	04° 39' 05"	103.10	51.56
C17	2416.90	04° 24' 54"	188.23	93.18
C18	2706.90	08° 03' 25"	380.64	190.63
C19	2706.90	03° 39' 20"	172.71	86.38
C20	2706.90	11° 42' 45"	553.35	277.84
C21	267.29	39° 42' 20"	185.23	96.51
C22	217.00	44° 30' 40"	158.58	88.80
C23	1280.00	05° 03' 08"	111.10	55.59
C24	15.00	75° 39' 48"	19.81	11.85
C25	25.50	44° 14' 57"	19.69	10.37
C26	45.00	84° 42' 27"	50.82	28.51
C27	45.00	81° 06' 56"	48.00	26.57
C28	45.00	81° 06' 56"	48.00	26.57
C29	45.00	81° 33' 35"	64.06	38.82
C30	25.50	44° 14' 57"	19.69	10.37
C31	15.50	100° 53' 32"	27.29	18.77
C32	2731.90	01° 53' 04"	89.85	44.93
C33	15.50	80° 59' 32"	21.81	13.24
C34	242.29	27° 20' 24"	115.61	58.83
C35	232.29	12° 47' 58"	51.89	26.05
C36	15.50	83° 16' 54"	21.80	13.34
C37	297.00	06° 11' 13"	27.75	13.89
C38	257.00	05° 07' 18"	26.71	13.37
C39	2391.90	02° 00' 00"	83.49	41.75
C40	2391.90	01° 38' 42"	68.87	34.34
C41	15.50	77° 22' 52"	20.83	12.41
C42	45.83	103° 04' 25"	30.28	21.18
C43	2271.90	02° 06' 59"	83.37	41.69
C44	2271.90	02° 00' 00"	79.30	39.65
C45	223.90	05° 35' 20"	230.69	115.45
C46	2441.90	02° 18' 10"	98.14	49.08
C47	15.50	102° 11' 47"	27.85	19.21
C48	15.50	78° 48' 51"	21.31	12.73
C49	2681.90	01° 49' 51"	85.70	42.85
C50	2681.90	02° 00' 46"	94.22	47.11
C51	2681.90	02° 00' 46"	94.22	47.11
C52	2681.90	02° 00' 46"	94.22	47.11
C53	2681.90	02° 00' 46"	94.22	47.11
C54	223.90	05° 32' 33"	216.12	108.15
C55	2681.90	00° 04' 28"	3.49	1.74
C56	25.50	44° 46' 38"	19.93	10.50
C57	45.00	71° 53' 51"	56.47	32.63
C58	45.00	56° 09' 31"	44.11	24.01
C59	45.00	56° 09' 31"	44.11	24.01
C60	45.00	72° 06' 14"	56.63	32.76
C61	45.00	12° 10' 28"	9.56	4.80
C62	25.50	43° 44' 09"	19.47	10.23
C63	2731.90	01° 09' 27"	55.19	27.59
C64	2731.90	01° 40' 40"	80.00	40.00
C65	2731.90	01° 40' 40"	80.00	40.00
C66	2731.90	01° 32' 13"	73.28	36.64
C67	15.50	97° 18' 04"	26.32	17.81
C68	2202.00	05° 37' 50"	232.56	116.28
C69	2202.00	05° 09' 08"	96.24	48.12
C70	2561.90	02° 38' 58"	118.47	59.24
C71	2561.90	02° 00' 46"	90.00	45.00
C72	2561.90	02° 00' 46"	90.00	45.00
C73	2561.90	02° 00' 46"	90.00	45.00
C74	2561.90	02° 00' 46"	90.00	45.00
C75	25.50	76° 42' 06"	7.43	3.72
C76	2561.90	02° 52' 37"	128.64	64.32
C77	2561.90	01° 28' 34"	86.00	43.00
C78	2283.11	02° 24' 05"	95.89	47.85
C79	1250.00	01° 46' 07"	38.58	19.29
C80	1250.00	07° 10' 11"	156.42	78.31
C81	2851.90	01° 10' 50"	58.76	29.38
C82	2851.90	02° 52' 08"	142.79	71.41
C83	2851.90	01° 40' 50"	83.78	41.89
C84	2851.90	01° 40' 40"	83.51	41.76
C85	2851.90	01° 40' 40"	83.51	41.76
C86	2851.90	01° 34' 55"	78.74	39.37
C87	25.00	102° 52' 37"	44.89	31.36
C88	2391.90	03° 38' 42"	152.16	76.09
C89	2441.90	03° 13' 21"	137.33	68.68
C90	2681.90	09° 57' 24"	466.05	233.81
C91	45.00	268° 29' 37"	210.87	---
C92	2731.90	06° 03' 00"	288.47	144.37
C93	45.00	268° 29' 54"	210.88	---
C94	25.00	76° 08' 16"	33.22	19.58
C95	25.50	27° 32' 51"	12.26	6.25

LEGEND

- ▲ SET 2" B.C. IN T.C. STAMPED R.M. (DIST. NOTED)
- FND. 2" B.C. IN T.C. STAMPED R.M. (DIST. NOTED)
- ▲ FND. MONUMENT AS INDICATED
- SET 5/8" REBAR W/ALUM. CAP, RLS 6305
- ① BLOCK NUMBER
- 21 LOT NUMBER
- ci CURVE NUMBER
- TI LINE NUMBER
- BUILDING SETBACK (20' FRONT, 15' SIDE)
- P.U.E. PUBLIC UTILITY EASEMENT

BASIS OF BEARINGS

NORTH 02°13'45" WEST, BEING THE EAST LINE OF THE NORTHEAST QUARTER (NE 1/4) OF SECTION 8, T. 21S., R. 60E., M.D.M., AS SHOWN BY A MAP ON FILE IN THE OFFICE OF THE COUNTY RECORDER OF CLARK COUNTY, NEVADA AS FILE 51, PAGE 19 OF SURVEYS.



NOTE: DIRECT VEHICULAR ACCESS TO MARINER COVE DR. & PRIZE LAKE DR. FROM THE ABUTTING LOTS IS PROHIBITED.

PROPOSED "BLUFFS UNIT NO. IOB"

BLUFFS UNIT NO. IOA
BOOK 38 PAGE 21

I, DENE E. KRAMEITBAUER, A DULY REGISTERED LAND SURVEYOR IN THE STATE OF NEVADA, DO HEREBY CERTIFY THAT THE MONUMENTS HAVE BEEN SET AND THE TIES ESTABLISHED AS SHOWN HERON.

Dene E. Krametbauer
DENE E. KRAMEITBAUER, R.L.S. 6305

