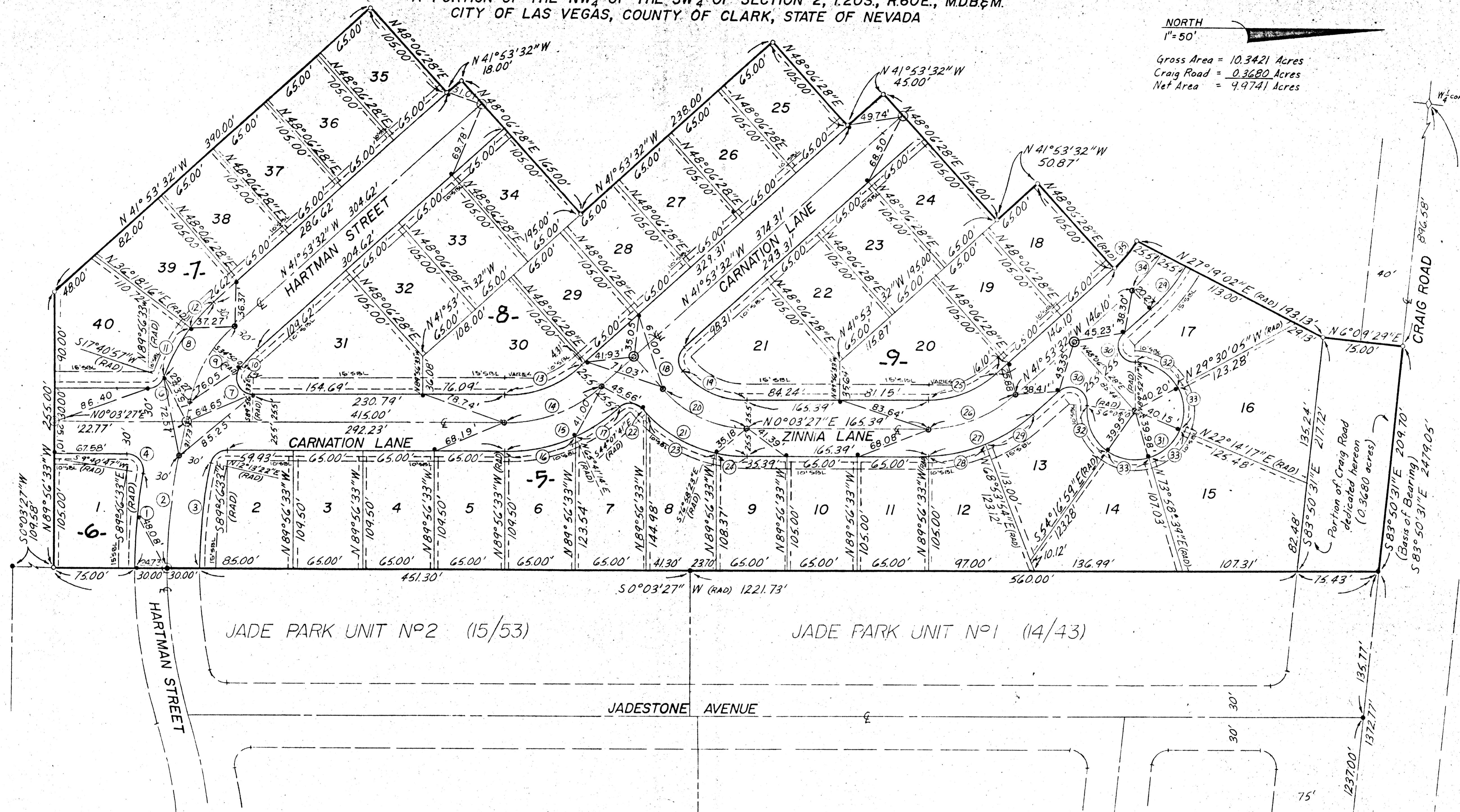


# JADE PARK UNIT NO 4

A PORTION OF THE NW 1/4 OF THE SW 1/4 OF SECTION 2, T.20S., R.60E., MDB&M.  
CITY OF LAS VEGAS, COUNTY OF CLARK, STATE OF NEVADA

NORTH  
1"=50'  
Gross Area = 10.3421 Acres  
Craig Road = 0.3680 Acres  
Net Area = 9.9741 Acres



CURVE DATA									
CURVE NO	Δ	R	L	T	CURVE NO	Δ	R	L	T
1	9°37'20"	523.44'	87.91'	44.06'	19	48°03'01"	80.94'	67.88'	36.08'
2	12°09'55"	493.44'	104.77'	52.58'	20	48°03'01"	106.44'	89.26'	47.45'
3	12°09'55"	463.44'	98.40'	49.39'	21	48°03'01"	131.94'	110.65'	58.81'
4	99°37'20"	15.00'	26.08'	17.76'	22	2°14'09"	131.94'	5.15'	2.58'
5	77°50'05"	15.00'	20.38'	12.11'	23	32°50'42"	131.94'	75.63'	38.89'
6	72°22'30"	15.00'	18.95'	10.97'	24	12°58'10"	131.94'	29.87'	15.00'
7	124°46'36"	15.00'	32.67'	28.68'	25	41°56'59"	94.61'	69.27'	36.27'
8	30°25'31"	160.00'	84.96'	43.51'	26	41°56'59"	120.11'	87.94'	46.05'
9	35°53'06"	130.00'	81.42'	42.10'	27	41°56'59"	145.61'	106.61'	55.82'
10	13°16'25"	100.00'	23.17'	11.64'	28	21°04'33"	145.61'	53.77'	27.20'
11	18°37'19"	160.00'	52.00'	26.23'	29	20°47'26"	145.61'	52.84'	26.71'
12	11°48'12"	160.00'	32.96'	16.54'	30	137°58'39"	15.00'	36.12'	39.05'
13	41°56'59"	106.53'	77.99'	40.84'	31	275°57'18"	45.50'	219.14'	-41.00'
14	41°56'59"	132.03'	96.66'	50.61'	32	60°22'06"	45.50'	47.44'	26.46'
15	41°56'59"	157.53'	115.33'	60.39'	33	51°44'22"	45.50'	41.09'	22.06'
16	24°22'13"	157.53'	67.00'	34.02'	34	20°47'26"	120.11'	43.58'	22.03'
17	17°34'46"	157.53'	48.33'	24.36'	35	20°47'26"	94.61'	34.33'	17.36'
18	90°00'00"	15.00'	23.56'	15.00'					

- LEGEND**
- SBL SETBACK LINE
  - 5' UTILITY EASEMENT
  - ① CURVE NUMBER
  - 1 LOT NUMBER
  - MONUMENTS SET
  - MONUMENTS FOUND
  - 5- BLOCK NUMBER

SHEET 2 OF 2

**MONUMENTATION MAP (10 JAN. 1977)**

**LEGEND**

- STEEL RIVET SET IN TOP OF CURB
- NAIL & TAG MARKED "LS 2984"
- ⊙ #5 REBAR W/ ALUMINUM CAP MARKED "LS 2984"

MONUMENTATION MAP - JADE PARK UNIT # 4

