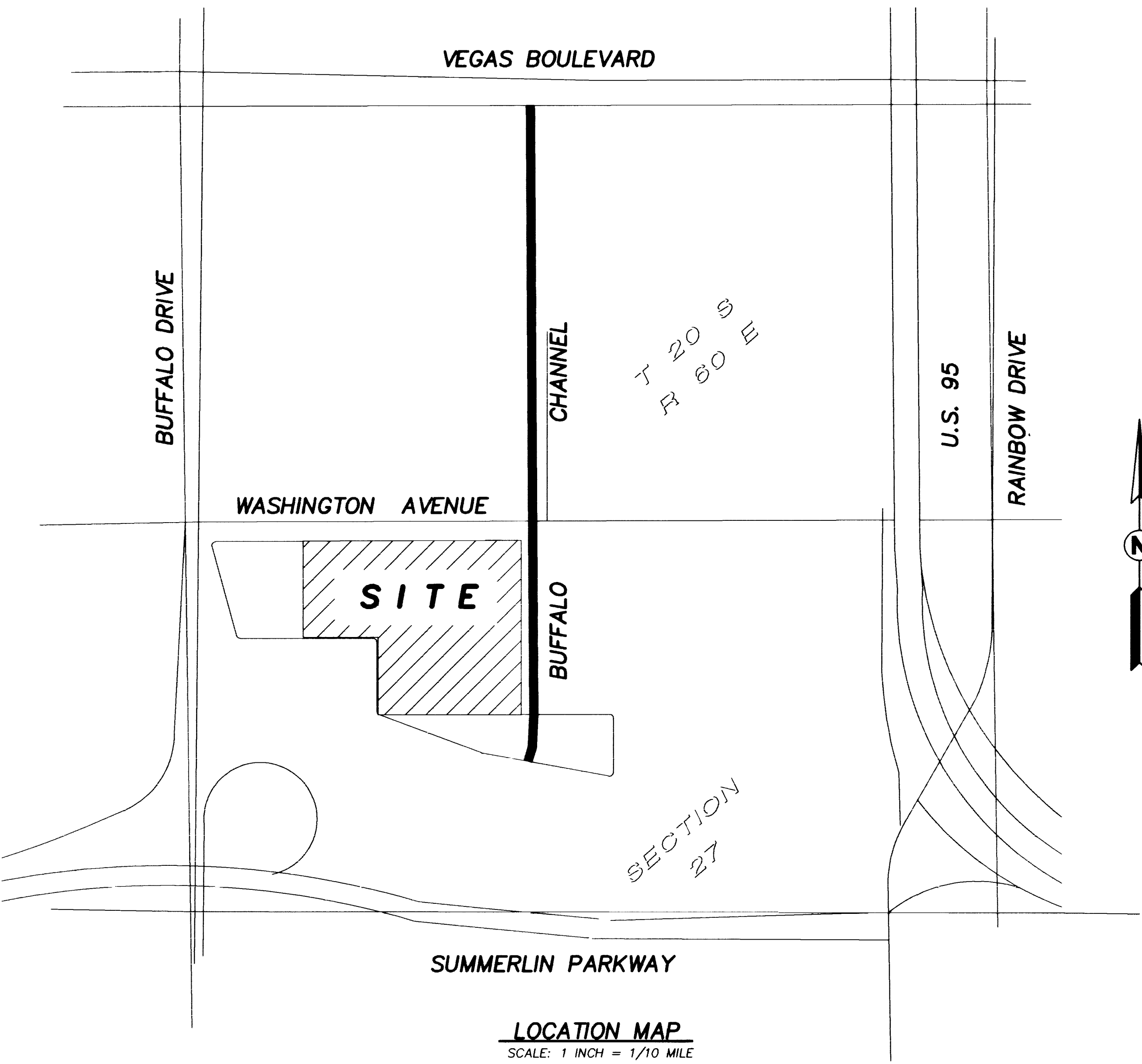
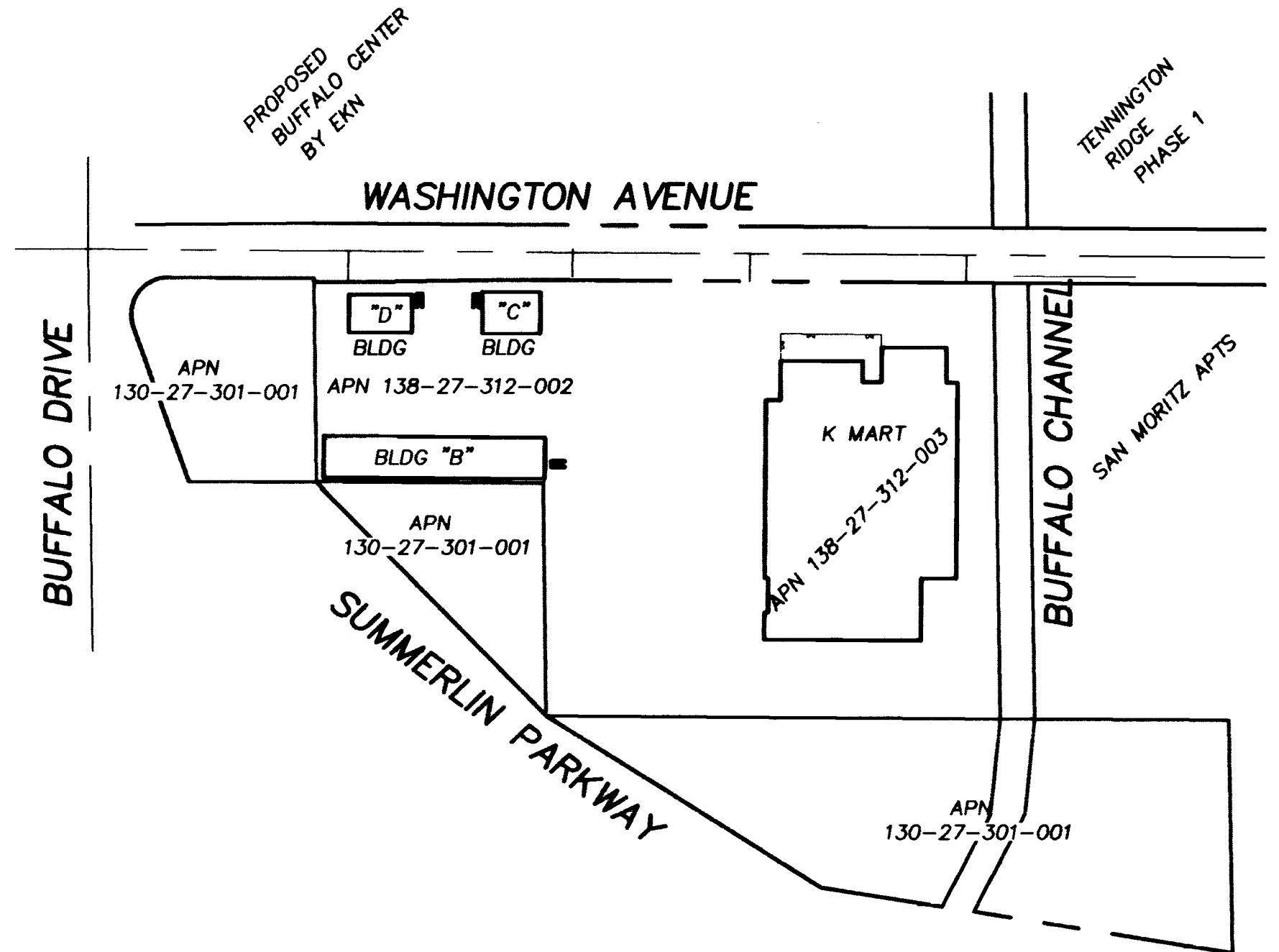


**VICINITY MAP**  
SCALE: 1 INCH = 2 MILES



**LOCATION MAP**  
SCALE: 1 INCH = 1/10 MILE



**SITE MAP**  
SCALE: 1 INCH = 400 FT

**SHEET INDEX**

- 1 COVER SHEET
- 2 VICINITY MAP
- 3 GENERAL NOTES SHEET
- 4 QUANTITY AND SCHEDULE SHEET
- 5 HORIZONTAL CONTROL AND FIRE ACCESS PLAN
- 6 MASTER UTILITY PLAN (STREET LIGHT PLAN)
- 7 SEWER PLAN AND PROFILE
- 8 SEWER PLAN AND PROFILE
- 9 SEWER PLAN AND PROFILE
- 10 GRADING PLAN
- 11 GRADING PLAN
- 12 SECTIONS SHEET
- 13 DETAILS SHEET
- 14 STANDARD DETAILS SHEET
- 15 STANDARD DETAILS SHEET
- 16 STANDARD DETAILS SHEET
- 17 STANDARD DETAILS SHEET

**AGENCY CONTACTS**

- CITY OF LAS VEGAS LAND DEVELOPMENT**  
731 SOUTH FOURTH STREET  
LAS VEGAS NV 89153  
(702) 229 - 6371  
CONTACT DENNIS MOYER
- CITY FIRE DEPARTMENT**  
731 SOUTH FOURTH STREET  
LAS VEGAS NV 89101  
(702) 229 - 4685  
CONTACT AMY CHENG
- LAS VEGAS VALLEY WATER DISTRICT**  
1001 SOUTH VALLEY VIEW BOULEVARD  
LAS VEGAS NV 89101  
(702) 870 - 2011  
CONTACT NOT ASSIGNED
- CITY OF LAS VEGAS SEWER DEPARTMENT**  
731 SOUTH FOURTH STREET  
LAS VEGAS NV 89101  
(702) 229 - 2179  
CONTACT DAVID MCGONEGLE
- NEVADA POWER CO.**  
2215 EAST LONE MOUNTAIN ROAD  
LAS VEGAS NV 89031  
(702) 657 - 4313  
CONTACT KATHY CONNERS
- COX COMMUNICATION, LAS VEGAS**  
121 SOUTH MARTIN LUTHER KING  
LAS VEGAS NV 89106  
(702) 384 - 8084  
CONTACT BEN CRAVEY
- SPRINT/CENTRAL TELEPHONE-NEVADA**  
330 SOUTH VALLEY VIEW  
LAS VEGAS NV 89103  
(702) 244 - 7963  
CONTACT NOT ASSIGNED
- SOUTHWEST GAS CORP.**  
4300 WEST TROPICANA AVENUE  
LAS VEGAS NV 89103  
(702) 368 - 1555  
CONTACT NOT ASSIGNED

**SITE**



APPROVED FOR CONSTRUCTION  
*James D. Phelps* 9-1-99  
LAS VEGAS VALLEY WATER DISTRICT DATE

<b>LAURICH PROPERTIES, INC. (K-MART #9389)</b> 2500 WEST SAHARA AVENUE, SUITE 211 LAS VEGAS NV 89102 (702)220-4500		<b>AGRA Infrastructure Inc.</b> ENGINEERING GLOBAL SOLUTIONS 3016 W. CHARLESTON BOULEVARD, SUITE 180 LAS VEGAS, NEVADA 89102 PHONE: (702) 878-3617 FAX: (702) 878-3716	
<b>VICINITY MAP SHEET</b>		<b>K-MART #9389</b> 7500 BLOCK OF WASHINGTON AVENUE 300' EAST OF BUFFALO DRIVE CITY OF LAS VEGAS	
DRAWN BY: RHE	DESIGNED BY: DPS	CHECKED BY: DPS	PROJECT NO: 02-198B-130
DATE: 2-15-99	DATE: 2-15-99	DATE: 2-15-99	SCALE: AS NOTED
		2 OF 17 SHEETS DRAWING NO. 107-V3110	

