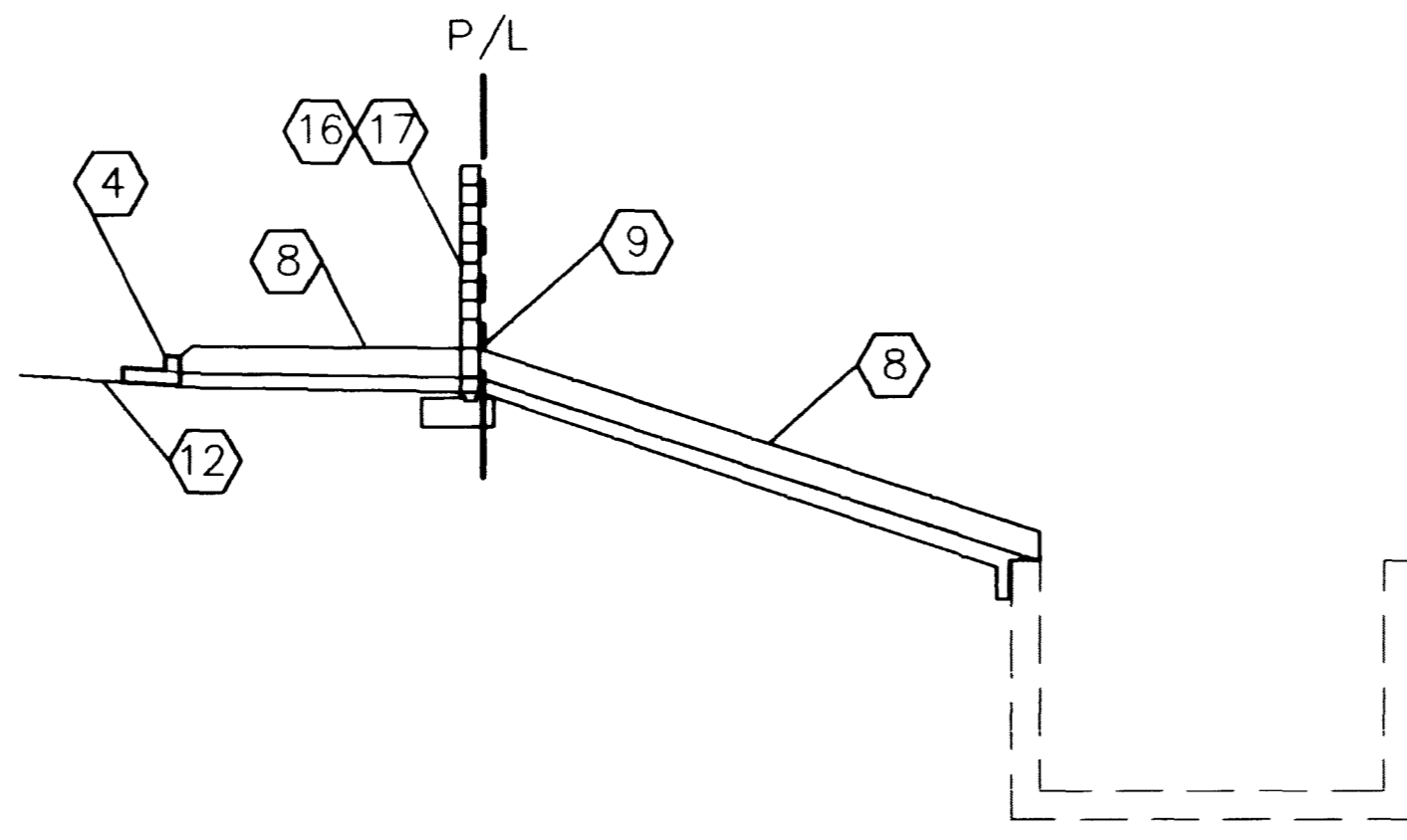
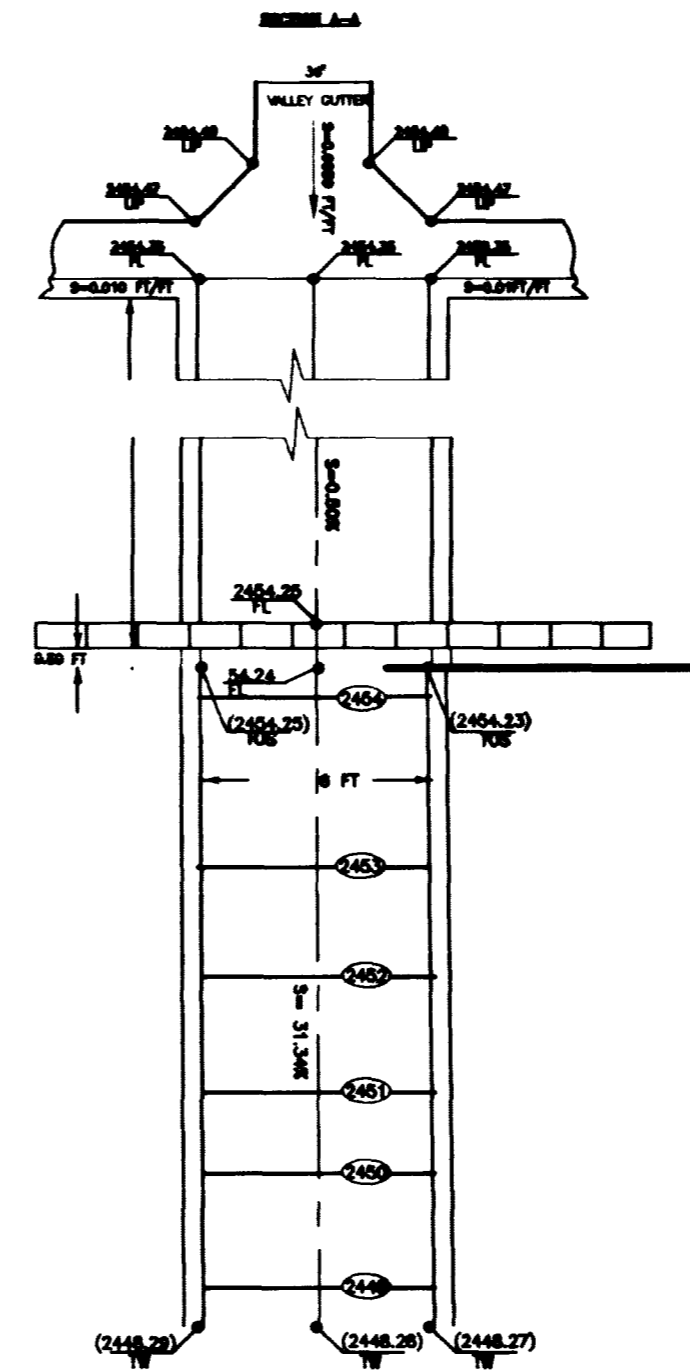


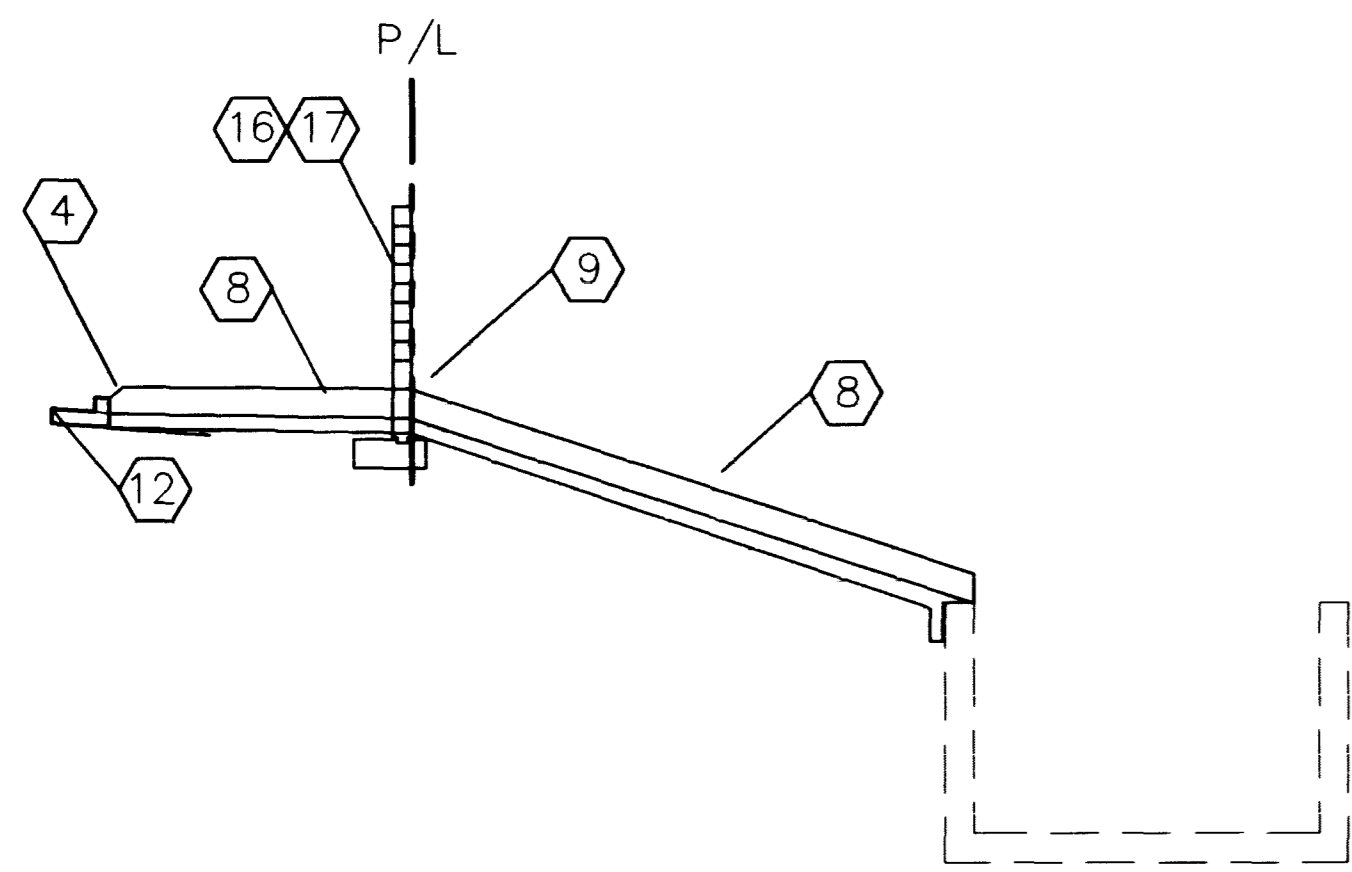
DETAIL 10
NTS



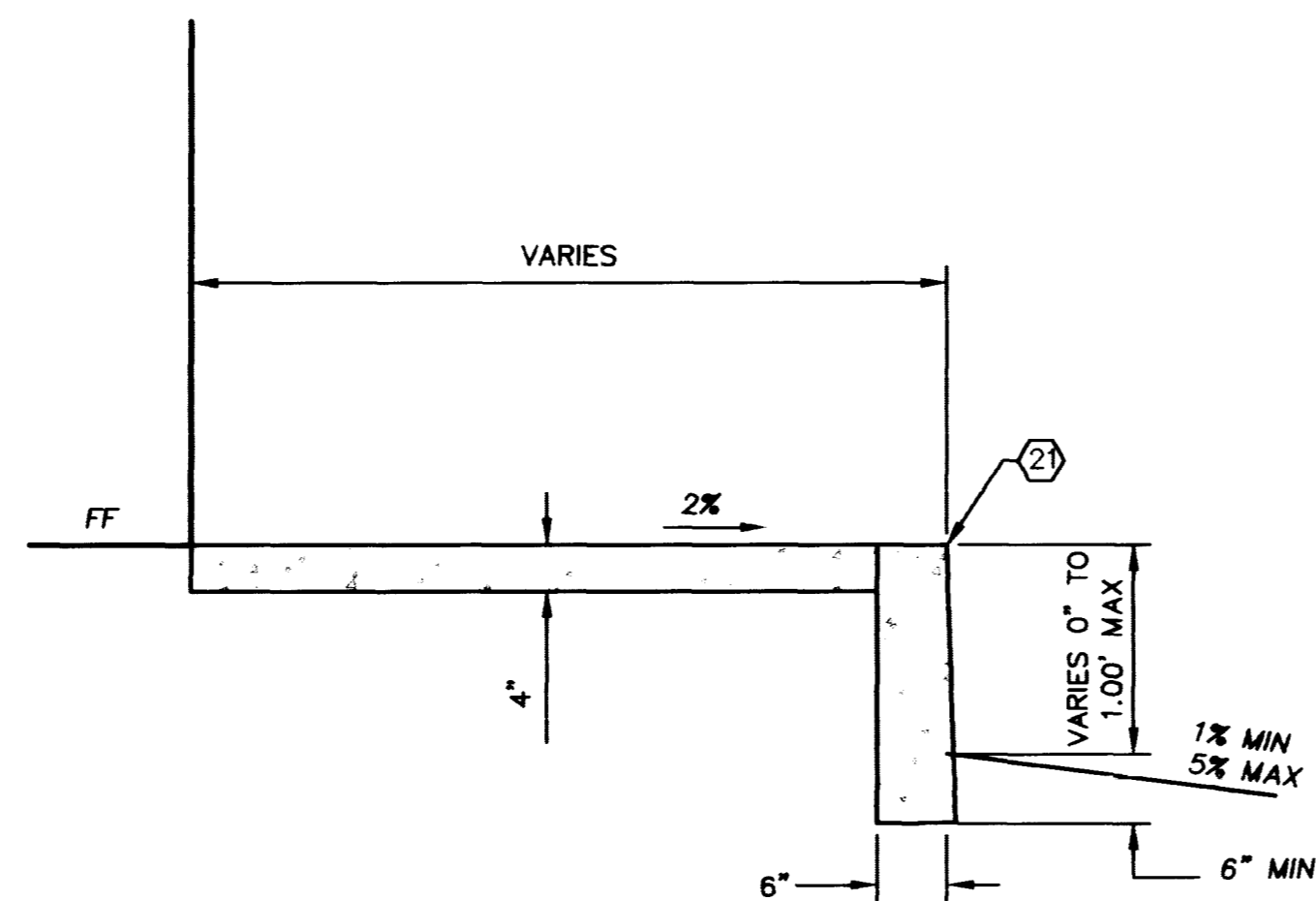
SECTION 11
NTS



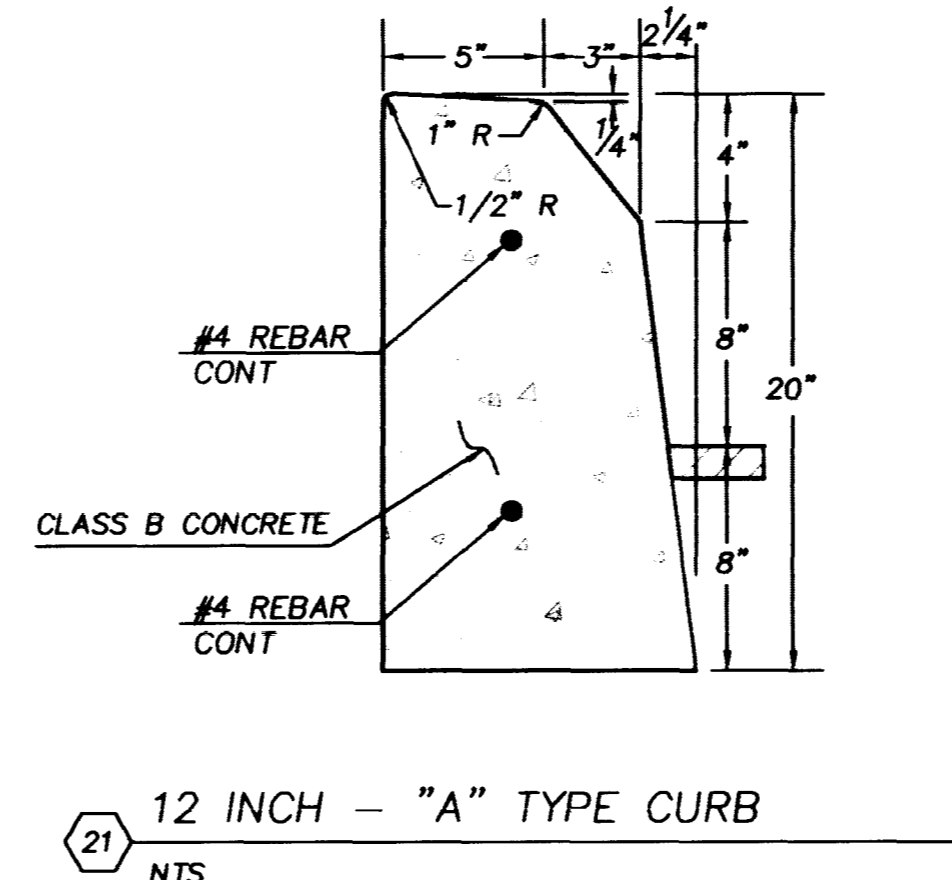
DETAIL 12
NTS



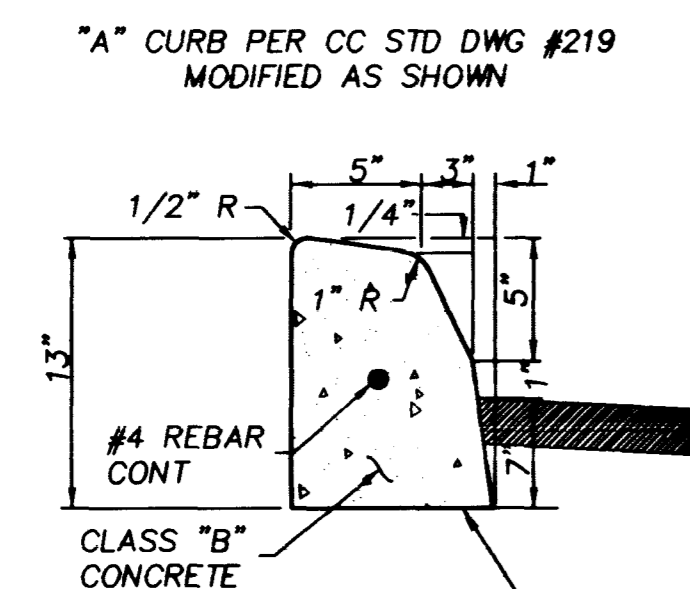
SECTION 13
NTS



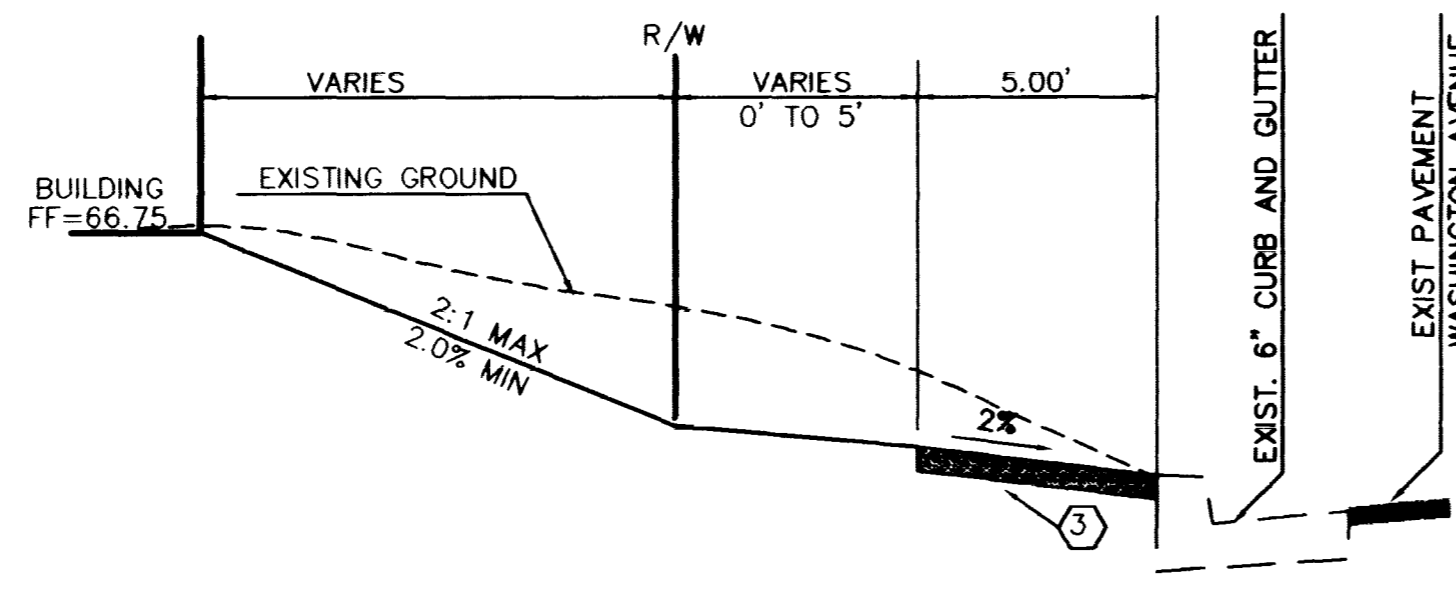
DETAIL 14
NTS



DETAIL 15
NTS



6" "A" CURB
NTS



SECTION 17
NTS

CONSTRUCTION NOTES

- ① CONSTRUCT 2" AC OVER 7" TYPE II AB OVER 6" TYPE I AB
- ② CONSTRUCT 3" AC OVER 8" TYPE II AB OVER 9" TYPE I AB
- ③ CONSTRUCT CONCRETE SIDEWALK PER STD DWG 234
- ④ CONSTRUCT "L" TYPE CURB AND GUTTER PER STD DWG 216
- ⑤ CONSTRUCT 8' CROSS GUTTER PER STD DWG 228
- ⑥ CONSTRUCT SIDEWALK RAMP PER STD DWG 235 (TYPE PER PLAN)
- ⑦ CONSTRUCT SIDEWALK UNDER DRAIN PER STD DWG 236
- ⑧ CONSTRUCT 6' WIDE "U" CHANNEL PER DETAIL 9 ON SHEET 12
- ⑨ CONSTRUCT 6' WIDE x 32 TALL THRU WALL DRAIN PER DETAIL 8 ON SHEET 12
- ⑩ CONSTRUCT 6' LONG 0" - 6" CURB FACE TRANSITION
- ⑪ CONSTRUCT MODIFIED "A" TYPE ISLAND CURB WITH 6" CURB FACE PER DETAIL 16 ON SHEET 13
- ⑫ CONSTRUCT 3' WIDE VALLEY GUTTER PER DETAIL 7 ON SHEET 12
- ⑬ SAWCUT EXISTING CONCRETE CURB AND GUTTER, REMOVE AND DISPOSE OF CONCRETE DEBRIS OFFSITE
- ⑭ CONSTRUCT 12" CONCRETE OVER 12" TYPE II AB OVER 24" TYPE I AB W/ # 4 BARS 24" OC
- ⑮ CONSTRUCT 2' WIDE "U" CHANNEL PER DETAIL 9 ON SHEET 12
- ⑯ CONSTRUCT C. M. U. FENCE PER STD B-102
- ⑰ CONSTRUCT RETAINING WALL W/ C. M. U. FENCE PER STD B-101
- ⑱ CONSTRUCT TRASH ENCLOSURE PER ARCHITECTURAL PLANS
- ⑲ CONSTRUCT 24' WIDE 0" CURB FACE OPENING
- ⑳ PROTECT IN PLACE
- ㉑ CONSTRUCT MODIFIED "A" TYPE ISLAND CURB WITH 12" CURB FACE PER STD DWG 219 AND DETAIL 15 ON SHEET 13
- ㉒ CONSTRUCT 10' LONG 6" - 12" CURB FACE TRANSITION
- ㉓ CONSTRUCT CASE III HANDICAP ACCESS RAMP PER CCSD NO. 235
- ㉔ CONSTRUCT PERIMETER SCREEN WALL PER ARCHITECTURAL PLANS
- ㉕ CONSTRUCT PERIMETER SCREEN WALL WITH EVERY OTHER BLOCK ALONG BOTTOM COURSE ROTATED 90 DEGREES FOR DRAINAGE PURPOSES

LAURICH PROPERTIES, INC. (K-MART #9389)
2500 WEST SAHARA AVENUE, SUITE 211
LAS VEGAS, NV 89102
(702) 720-4500

AGRA Infrastructure, Inc.
ENGINEERING GLOBAL SOLUTIONS
CHARLESTON BOULEVARD, SUITE 180
LAS VEGAS, NEVADA 89102
PHONE: (702) 878-3617
FAX: (702) 878-3716

DETAIL SHEET 2

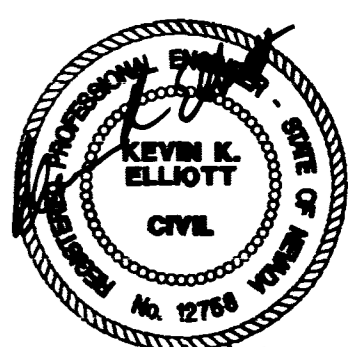
K-MART # 9389
7500 BLOCK OF WASHINGTON AVENUE
300' EAST OF BUFFALO DR.
CITY OF LAS VEGAS, NEVADA

DRAWN BY: STAFF
12-15-98

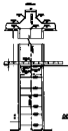
DESIGNED BY: STAFF
12-15-98

CHECKED BY: STAFF
12-15-98

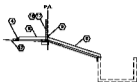
PROJECT NO: 98130
SCALE: 1" = 50'



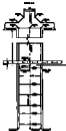
13
13 of 17 SHEETS
DRAWING NO.
107-V3110



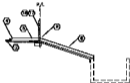
DETAIL 10



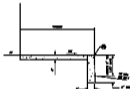
SECTION 11



DETAIL 12



SECTION 13



DETAIL 14



DETAIL 15



SECTION 16



SECTION 17

CONSTRUCTION NOTES

1. MATERIALS TO BE USED IN THIS DRAWING SHALL BE AS SPECIFIED IN THE NOTES TO THIS DRAWING.
2. DIMENSIONS OF ALL PARTS SHALL BE AS SHOWN UNLESS OTHERWISE SPECIFIED.
3. ALL DIMENSIONS SHALL BE IN INCHES UNLESS OTHERWISE SPECIFIED.
4. ALL DIMENSIONS SHALL BE TO THE CENTER UNLESS OTHERWISE SPECIFIED.
5. ALL DIMENSIONS SHALL BE TO THE SURFACE UNLESS OTHERWISE SPECIFIED.
6. ALL DIMENSIONS SHALL BE TO THE CENTER UNLESS OTHERWISE SPECIFIED.
7. ALL DIMENSIONS SHALL BE TO THE SURFACE UNLESS OTHERWISE SPECIFIED.
8. ALL DIMENSIONS SHALL BE TO THE CENTER UNLESS OTHERWISE SPECIFIED.
9. ALL DIMENSIONS SHALL BE TO THE SURFACE UNLESS OTHERWISE SPECIFIED.
10. ALL DIMENSIONS SHALL BE TO THE CENTER UNLESS OTHERWISE SPECIFIED.
11. ALL DIMENSIONS SHALL BE TO THE SURFACE UNLESS OTHERWISE SPECIFIED.
12. ALL DIMENSIONS SHALL BE TO THE CENTER UNLESS OTHERWISE SPECIFIED.
13. ALL DIMENSIONS SHALL BE TO THE SURFACE UNLESS OTHERWISE SPECIFIED.
14. ALL DIMENSIONS SHALL BE TO THE CENTER UNLESS OTHERWISE SPECIFIED.
15. ALL DIMENSIONS SHALL BE TO THE SURFACE UNLESS OTHERWISE SPECIFIED.
16. ALL DIMENSIONS SHALL BE TO THE CENTER UNLESS OTHERWISE SPECIFIED.
17. ALL DIMENSIONS SHALL BE TO THE SURFACE UNLESS OTHERWISE SPECIFIED.
18. ALL DIMENSIONS SHALL BE TO THE CENTER UNLESS OTHERWISE SPECIFIED.
19. ALL DIMENSIONS SHALL BE TO THE SURFACE UNLESS OTHERWISE SPECIFIED.
20. ALL DIMENSIONS SHALL BE TO THE CENTER UNLESS OTHERWISE SPECIFIED.

DETAIL SHEET 2

ALUMINUM INDUSTRIES, INC. (D-SHEET NUMBER)

ALUMINUM INDUSTRIES, INC.
 100 SOUTH WASHINGTON AVENUE
 ANN ARBOR, MICHIGAN 48106
 TEL: 313/761-1000

ALUMINUM INDUSTRIES, INC.
 100 SOUTH WASHINGTON AVENUE
 ANN ARBOR, MICHIGAN 48106
 TEL: 313/761-1000



12 - 17
 1977-78