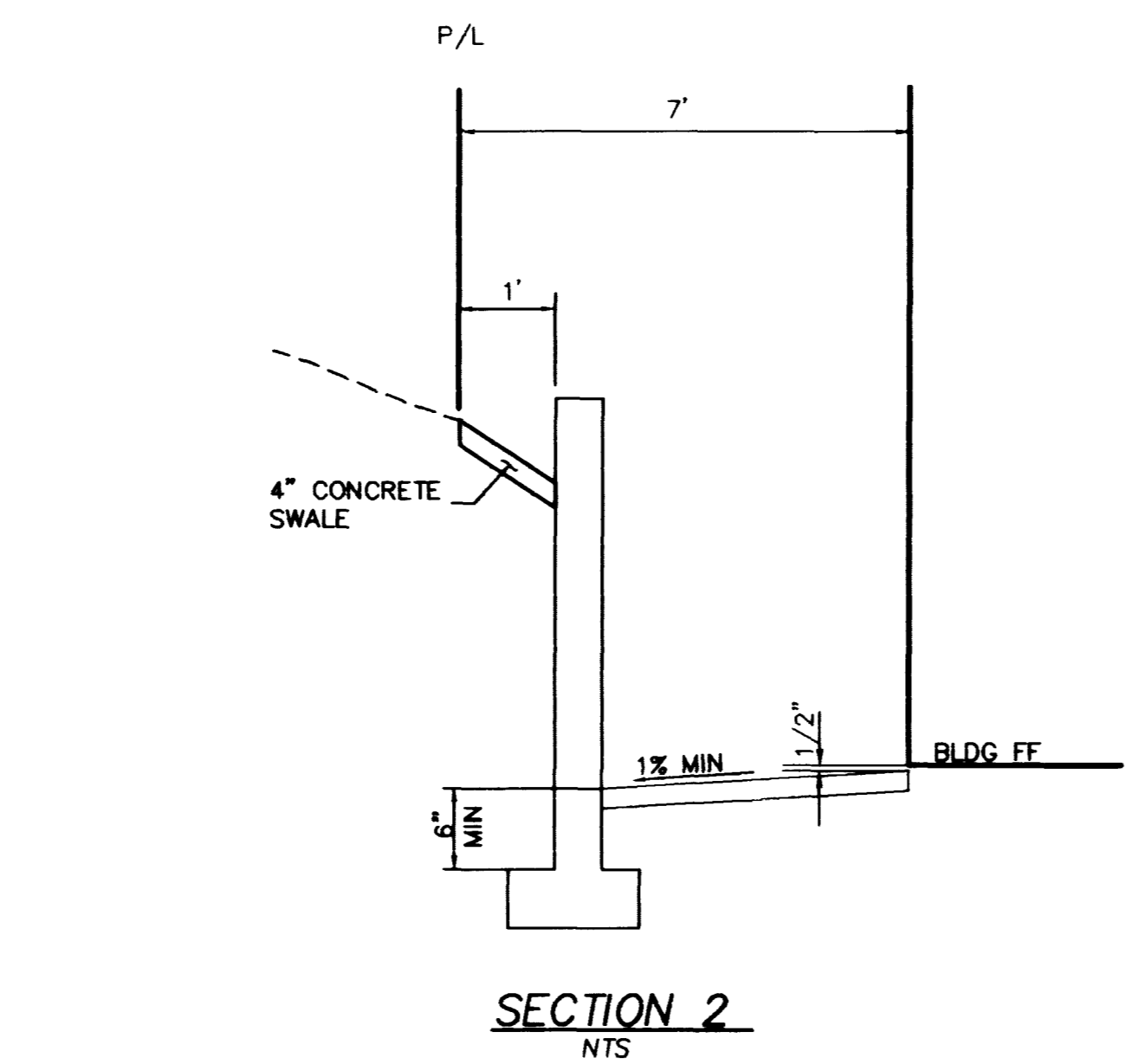


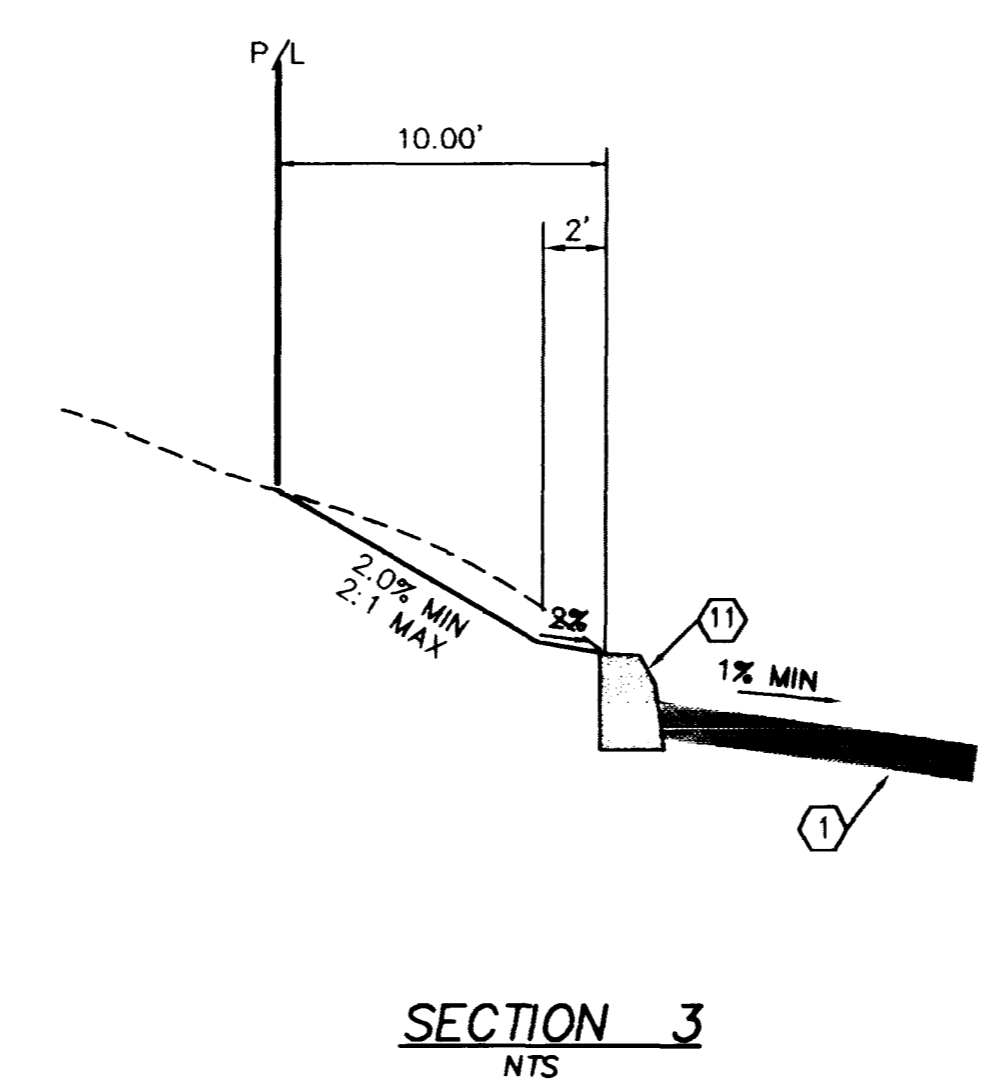
SECTION 1
NTS

1



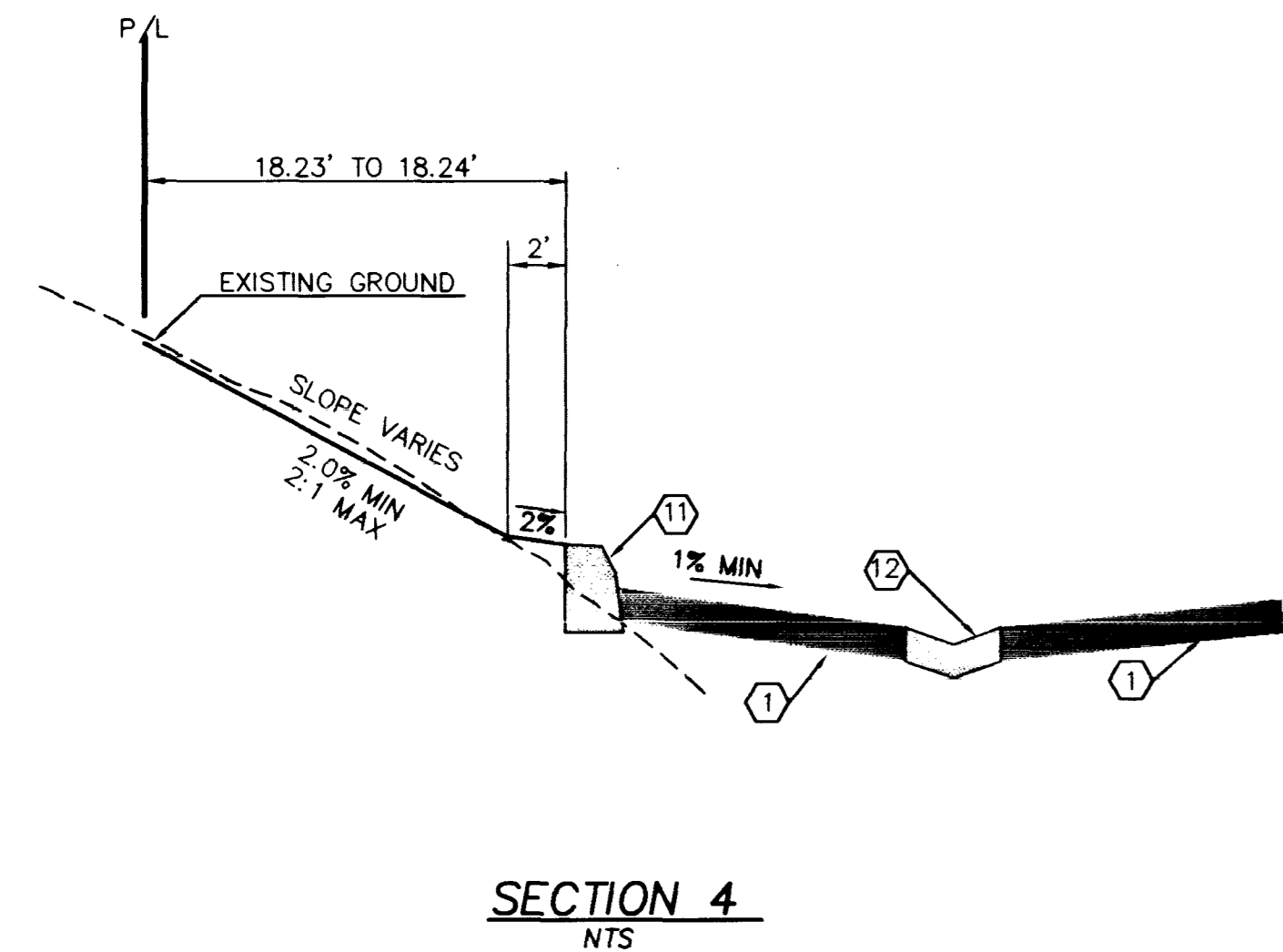
SECTION 2
NTS

2



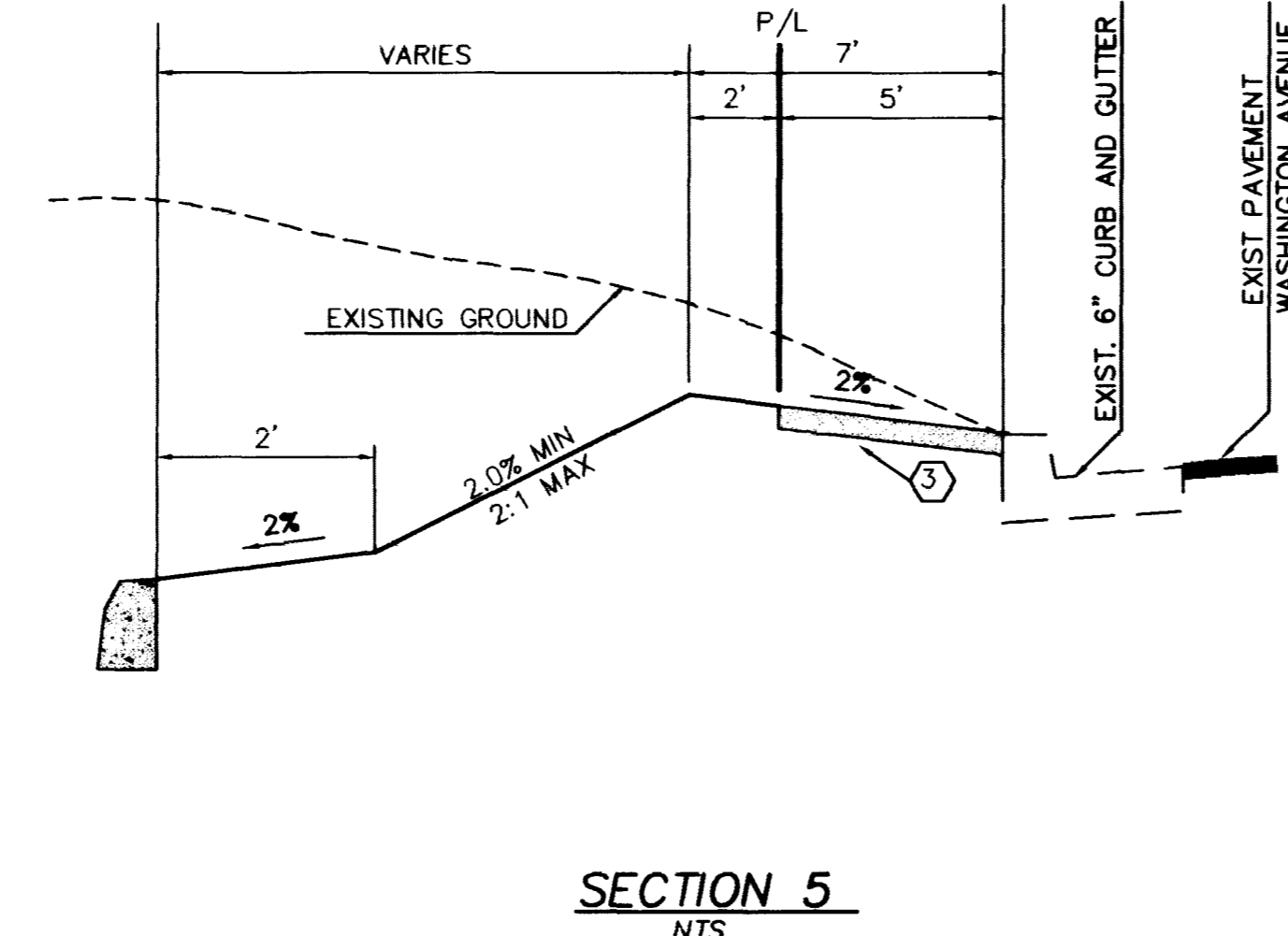
SECTION 3
NTS

3



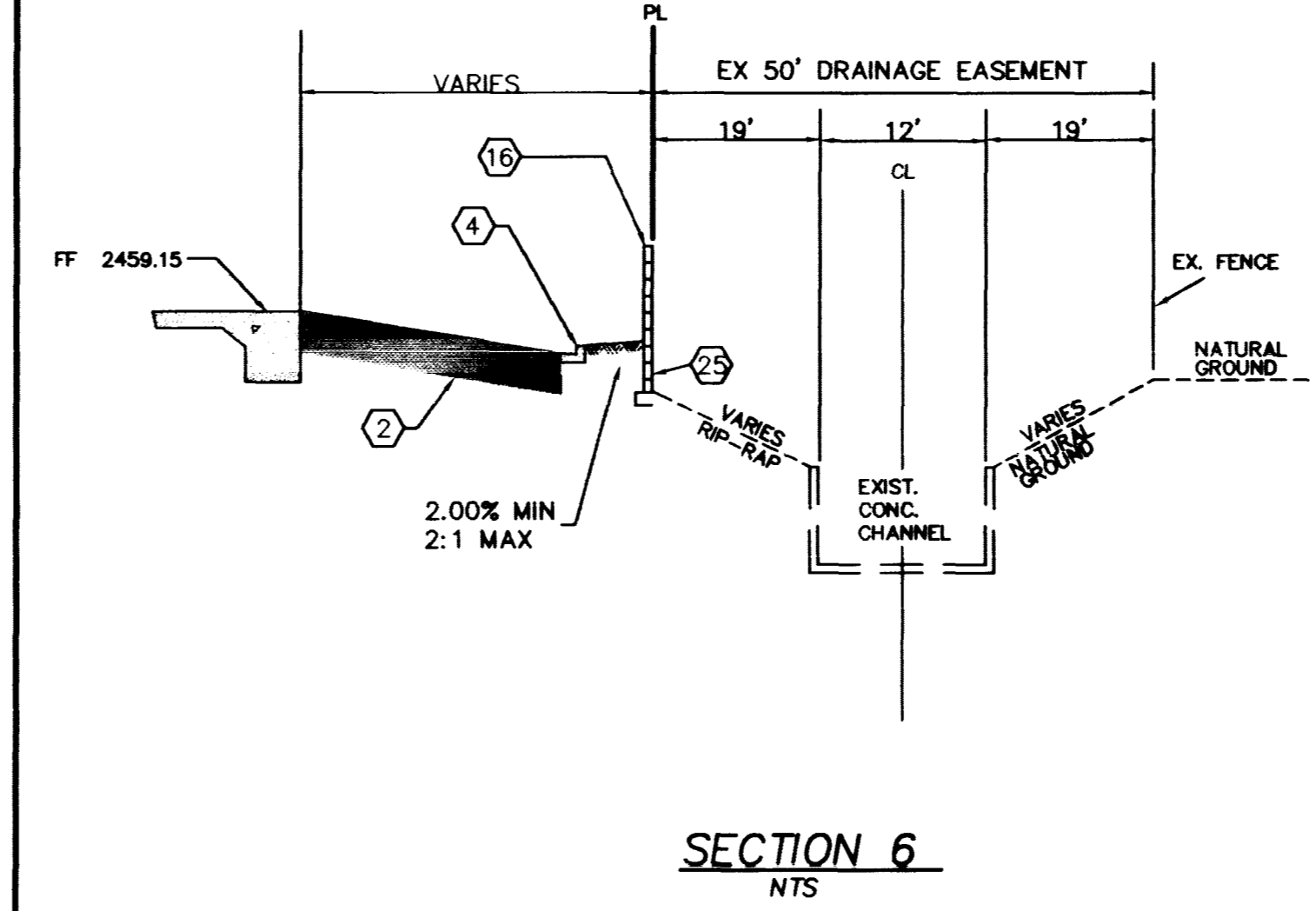
SECTION 4
NTS

4



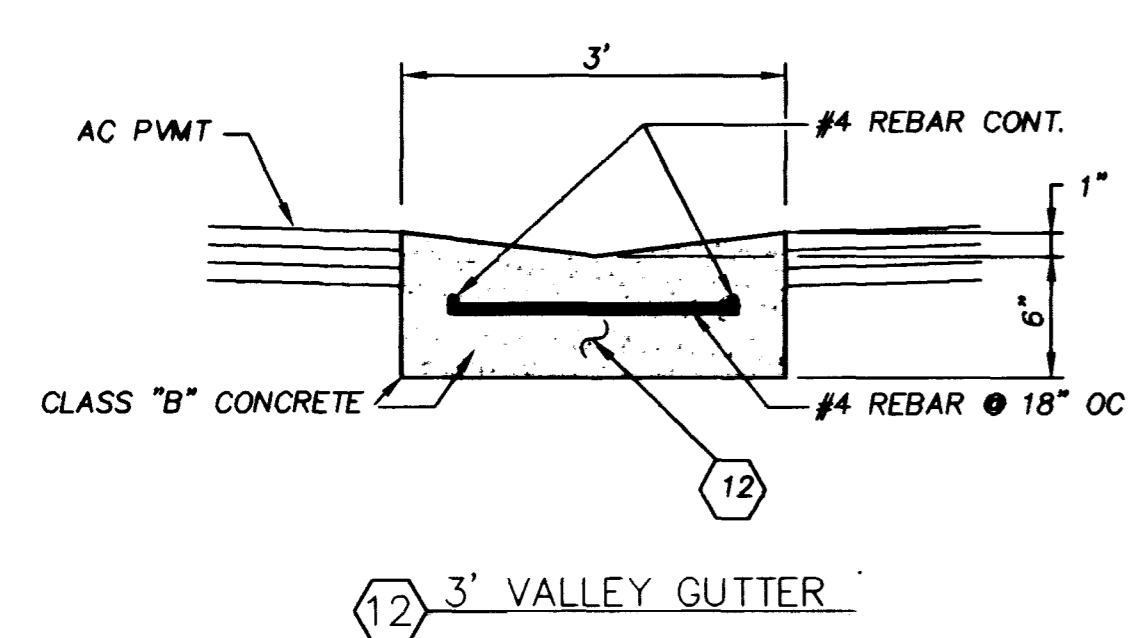
SECTION 5
NTS

5



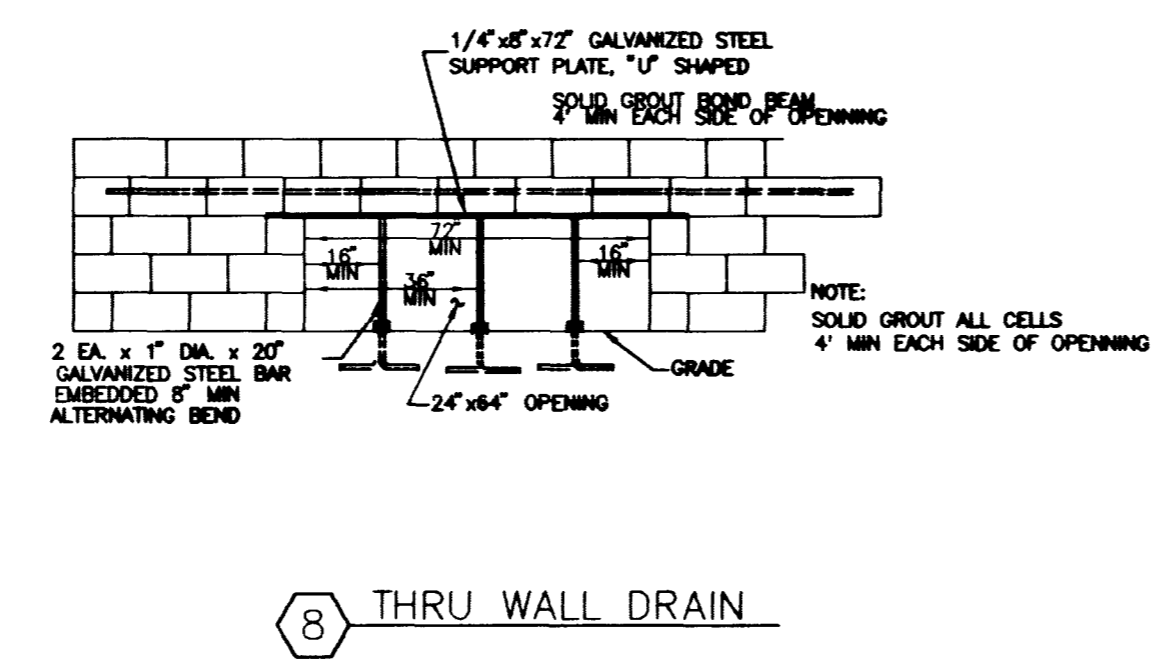
SECTION 6
NTS

6



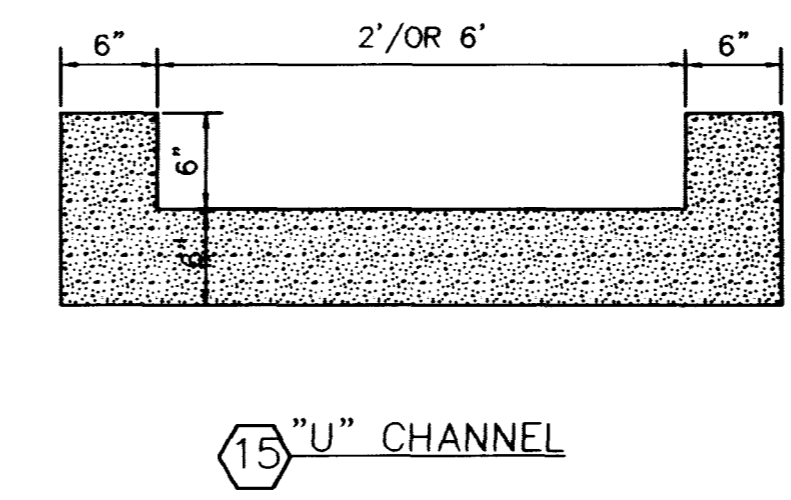
DETAIL 7
NTS

7



DETAIL 8
NTS

8



DETAIL 9
NTS

9

CONSTRUCTION NOTES

- 1 CONSTRUCT 2" AC OVER 7" TYPE II AB OVER 6" TYPE I AB
- 2 CONSTRUCT 3" AC OVER 8" TYPE II AB OVER 9" TYPE I AB
- 3 CONSTRUCT CONCRETE SIDEWALK PER STD DWG 234
- 4 CONSTRUCT "L" TYPE CURB AND GUTTER PER STD DWG 216
- 5 CONSTRUCT 8' CROSS GUTTER PER STD DWG 228
- 6 CONSTRUCT SIDEWALK RAMP PER STD DWG 235 (TYPE PER PLAN)
- 7 CONSTRUCT SIDEWALK UNDER DRAIN PER STD DWG 236
- 8 CONSTRUCT 6' WIDE "U" CHANNEL PER DETAIL 9 ON SHEET 12
- 9 CONSTRUCT 6' WIDE x 32 TALL THRU WALL DRAIN PER DETAIL 8 ON SHEET 12
- 10 CONSTRUCT 6' LONG 0" - 6" CURB FACE TRANSITION
- 11 CONSTRUCT MODIFIED "A" TYPE ISLAND CURB WITH 6" CURB FACE PER DETAIL 16 ON SHEET 13
- 12 CONSTRUCT 3' WIDE VALLEY GUTTER PER DETAIL 7 ON SHEET 12
- 13 SAWCUT EXISTING CONCRETE CURB AND GUTTER, REMOVE AND DISPOSE OF CONCRETE DEBRIS OFFSITE
- 14 CONSTRUCT 12" CONCRETE OVER 12" TYPE II AB OVER 24" TYPE I AB W/ # 4 BARS 24" OC
- 15 CONSTRUCT 2' WIDE "U" CHANNEL PER DETAIL 9 ON SHEET 12
- 16 CONSTRUCT C. M. U. FENCE PER STD B-102
- 17 CONSTRUCT RETAINING WALL W/ C. M. U. FENCE PER STD B-101
- 18 CONSTRUCT TRASH ENCLOSURE PER ARCHITECTURAL PLANS
- 19 CONSTRUCT 24" WIDE 0" CURB FACE OPENING
- 20 PROTECT IN PLACE
- 21 CONSTRUCT MODIFIED "A" TYPE ISLAND CURB WITH 12" CURB FACE PER STD DWG 219 AND DETAIL 15 ON SHEET 13
- 22 CONSTRUCT 10' LONG 6" - 12" CURB FACE TRANSITION
- 23 CONSTRUCT CASE III HANDICAP ACCESS RAMP PER CCSD NO. 235
- 24 CONSTRUCT PERIMETER SCREEN WALL PER ARCHITECTURAL PLANS
- 25 CONSTRUCT PERIMETER SCREEN WALL WITH EVERY OTHER BLOCK ALONG BOTTOM COURSE ROTATED 90 DEGREES FOR DRAINAGE PURPOSES

DRAWN BY: STAFF DESIGNED BY: STAFF CHECKED BY: STAFF PROJECT NO: 98130	02/01/99 03/01/99 03/01/99	SCALE: AS NOTED
	02/01/99 03/01/99 03/01/99	
DETAIL SHEET 1		
K-MART #9389 7500 BLOCK OF WASHINGTON AVENUE 300' EAST OF BUFFALO DRIVE CITY OF LAS VEGAS		
LAURICH PROPERTIES, INC. (K-MART #9389) 2500 WEST SAHARA AVENUE, SUITE 211 LAS VEGAS, NEVADA 89102 (702) 220-4500		
AGRA Infrastructure, Inc. ENGINEERING GLOBAL SOLUTIONS CHARLESTON BOULEVARD, SUITE 180 LAS VEGAS, NEVADA 89102 PHONE: (702) 878-3716 FAX: (702) 878-3617		
12 12 OF 17 SHEETS DRAWING NO. 107-V3110		

J:\1998\100\98130\98130d1.dwg Mon Jun 21 12:20:01 1999

