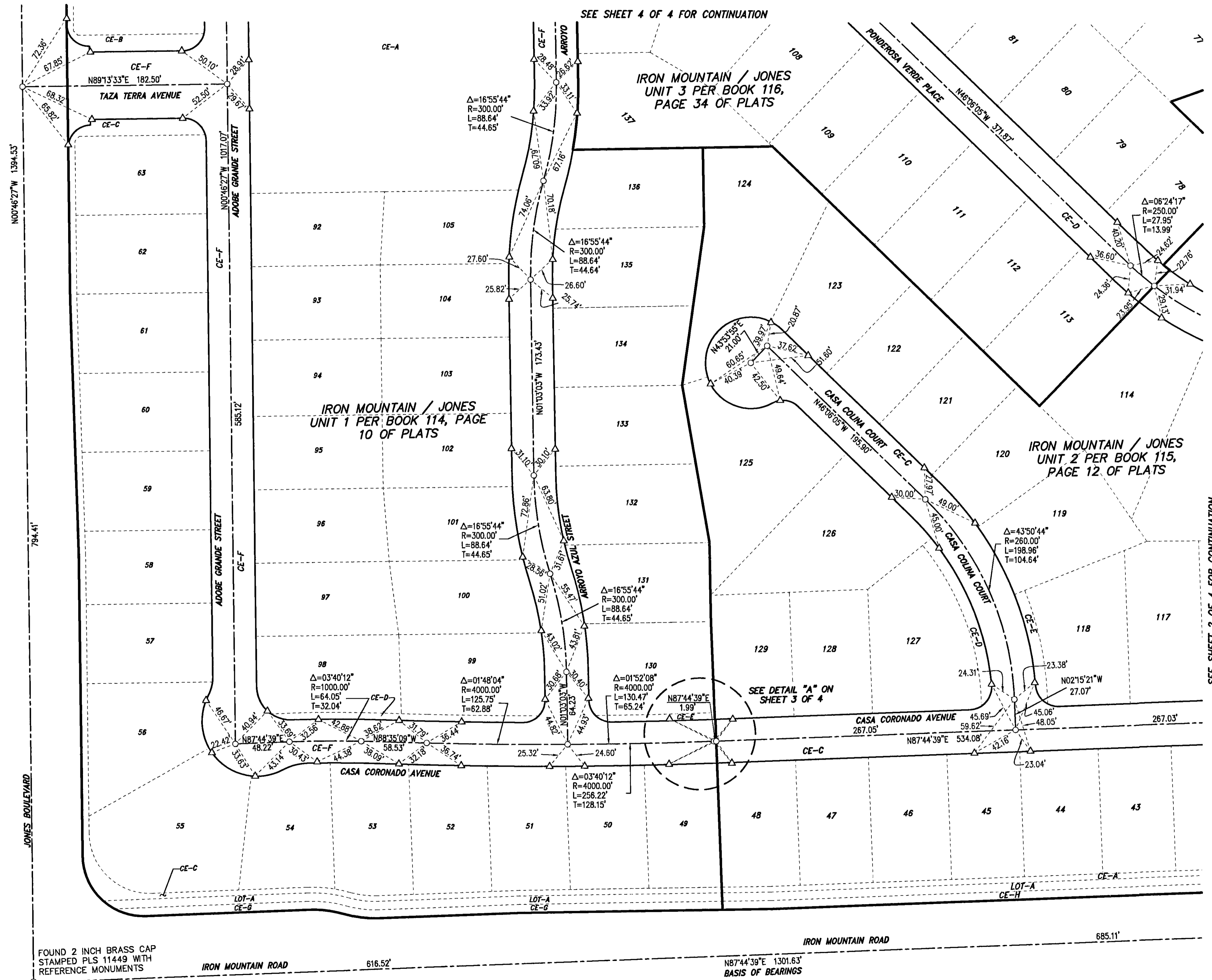


**MONUMENT TIE MAP  
IRON MOUNTAIN / JONES UNIT 1-4**

RECORDED IN BOOK 114, PAGE 10 OF PLATS, BOOK 115, PAGE 12 OF PLATS, BOOK 116, PAGE 34 OF PLATS, AND BOOK 116, PAGE 35 OF PLATS IN THE CLARK COUNTY RECORDERS OFFICE, CLARK COUNTY, NEVADA, LYING WITHIN THE SOUTH HALF (S 1/2) OF THE SOUTHWEST QUARTER (SW 1/4) OF SECTION 01, TOWNSHIP 19 SOUTH, RANGE 60 EAST, M.D.M., CITY OF LAS VEGAS, CLARK COUNTY, NEVADA



**SURVEYOR'S CERTIFICATE**

I, BARRY D. BRULAND, A PROFESSIONAL LAND SURVEYOR, LICENSED IN THE STATE OF NEVADA, AS AN AGENT FOR CARTER AND BURGESS, INC., DO HEREBY CERTIFY THAT:

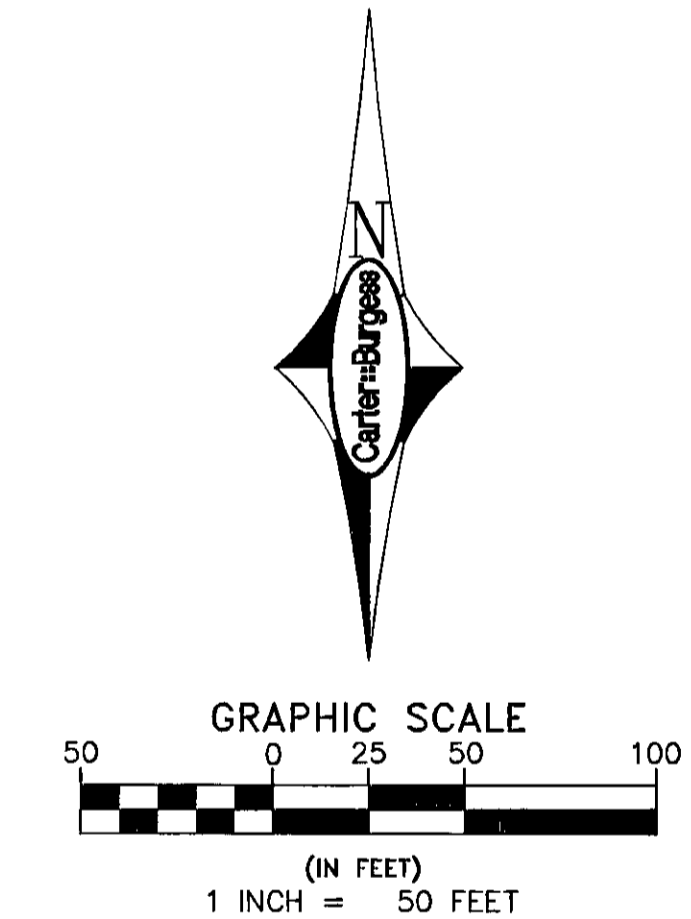
1. THIS PLAT REPRESENTS THE RESULTS OF A SURVEY CONDUCTED UNDER MY DIRECT SUPERVISION AT THE INSTANCE OF GREYSTONE NEVADA, LLC, A DELAWARE LIMITED LIABILITY COMPANY.
2. THE LANDS SURVEYED LIE WITHIN SECTION 01, TOWNSHIP 19 SOUTH, RANGE 60 EAST, M.D.M., CLARK COUNTY, NEVADA. THIS SURVEY WAS COMPLETED ON NOVEMBER 5, 2008.
3. THIS PLAT COMPLIES WITH THE APPLICABLE STATE STATUTES AND ANY LOCAL ORDINANCES IN EFFECT ON THE DATE THAT THE GOVERNING BODY GAVE ITS FINAL APPROVAL.
4. THE MONUMENTS DEPICTED ON THE PLAT ARE OF THE CHARACTER SHOWN AND OCCUPY THE POSITIONS INDICATED AND ARE SUFFICIENT NUMBER AND DURABILITY.

BARRY D. BRULAND, PLS  
PROFESSIONAL LAND SURVEYOR  
NEVADA CERTIFICATE NUMBER 8352



**BASIS OF BEARINGS**

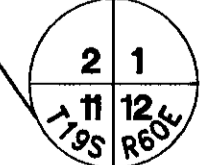
NORTH 87°44'39" EAST, BEING THE SOUTH LINE OF THE SOUTHWEST QUARTER (SW 1/4) OF SECTION 1, TOWNSHIP 19 SOUTH, RANGE 60 EAST, M.D.M., CITY OF LAS VEGAS, CLARK COUNTY, NEVADA AND SHOWN BY PARCEL MAP THEREOF ON FILE IN FILE 104, PAGE 76 OF SURVEYS IN THE CLARK COUNTY RECORDERS OFFICE, CLARK COUNTY, NEVADA.



**LEGEND**

- SUBDIVISION BOUNDARY LINE
- - - CENTERLINE
- RIGHT-OF-WAY LINE
- LOT LINE
- 17 / CE-F LOT NUMBER / COMMON LOT PER BOOK 119, PAGE 66 OF PLATS
- SET TYPE III MONUMENT STAMPED PLS 8352
- △ SET TYPE IV REFERENCE MONUMENT STAMPED PLS 8352
- ⊙ SET TYPE II MONUMENT STAMPED PLS 8352
- ⊙ MONUMENT AS DESCRIBED

FOUND 2 INCH BRASS CAP STAMPED PLS 11449 WITH REFERENCE MONUMENTS



**Carter Burgess** 6655 Bermuda Road  
Las Vegas, Nevada 89119  
(702) 938-5400  
(702) 938-5454

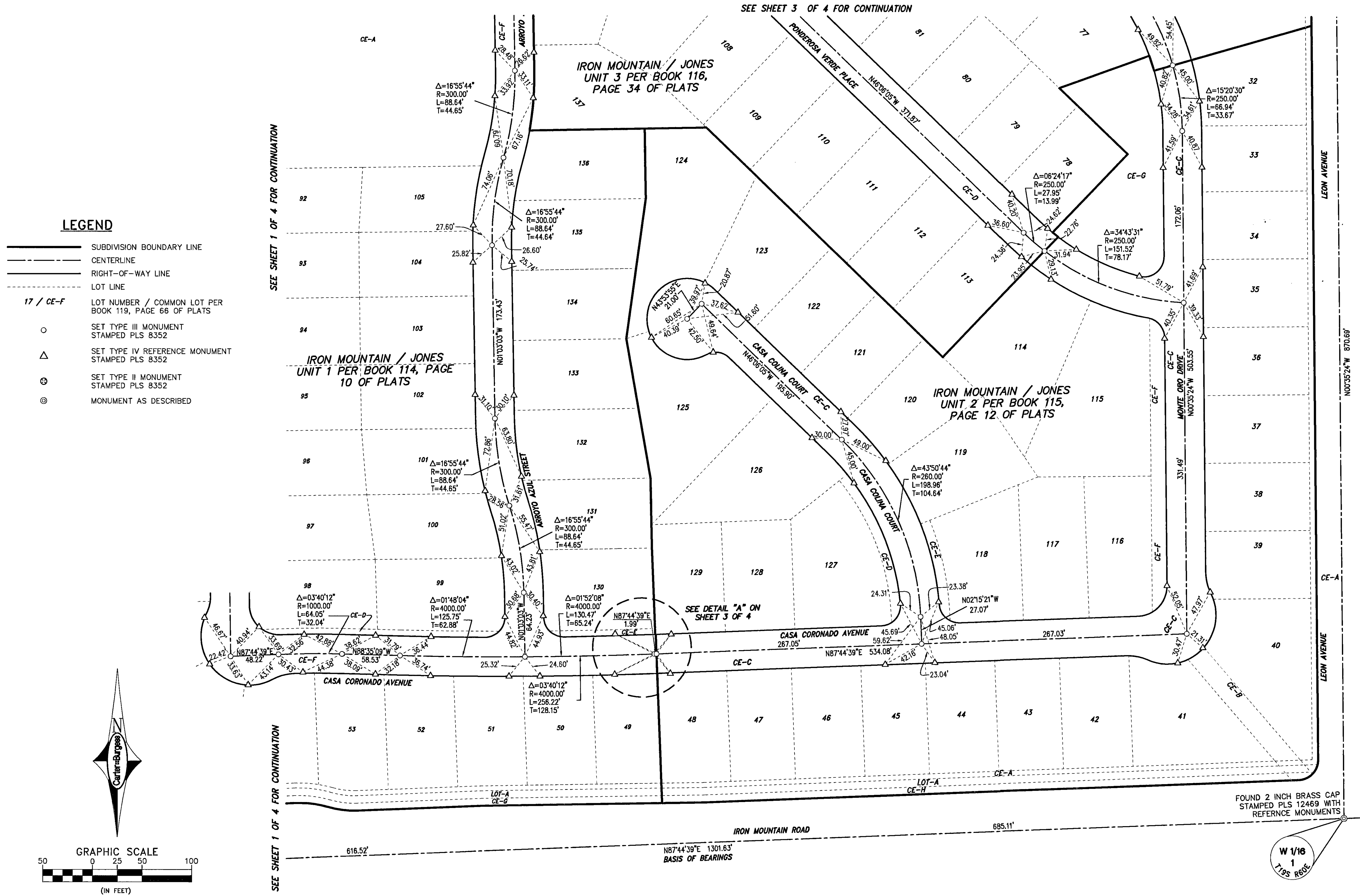
Consultants in Planning, Engineering, Construction Management, and Related Services

SCALE: 1"=50'	JOB NO.: 240570	SHEET	OF
DRAWING FILE: 0570_MON	DRN. BY: DMP/JF	1	4
DATE: 11-06-2008	CKD. BY: BB		

15191

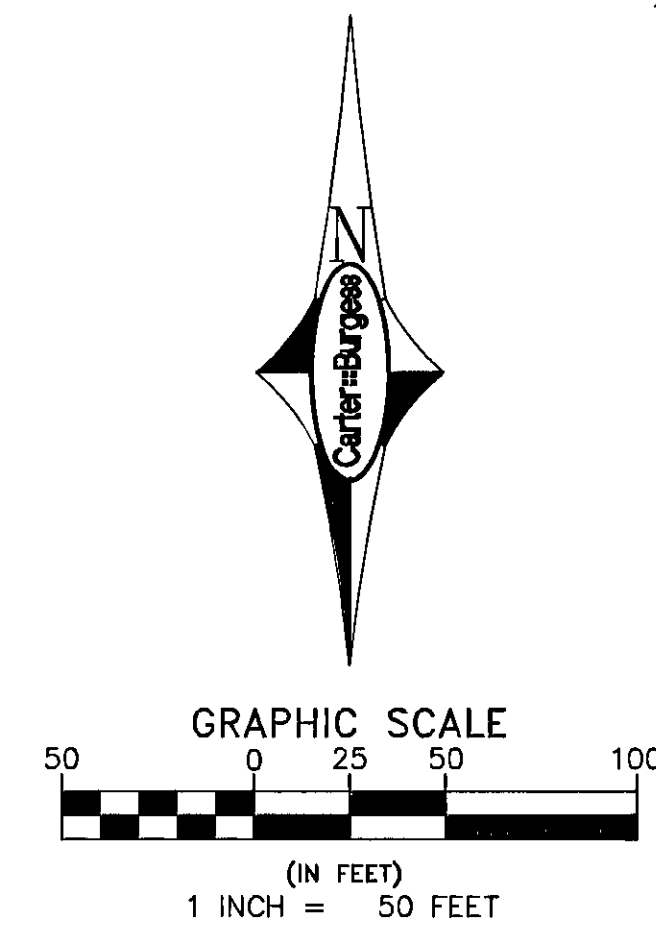
# MONUMENT TIE MAP IRON MOUNTAIN / JONES UNIT 1-4

RECORDED IN BOOK 114, PAGE 10 OF PLATS, BOOK 115, PAGE 12 OF PLATS, AND BOOK 116, PAGE 34 OF PLATS, AND BOOK 116, PAGE 35 OF PLATS IN THE CLARK COUNTY RECORDERS OFFICE, CLARK COUNTY, NEVADA, LYING WITHIN THE SOUTH HALF (S 1/2) OF THE SOUTHWEST QUARTER (SW 1/4) OF SECTION 01, TOWNSHIP 19 SOUTH, RANGE 60 EAST, M.D.M., CITY OF LAS VEGAS, CLARK COUNTY, NEVADA



### LEGEND

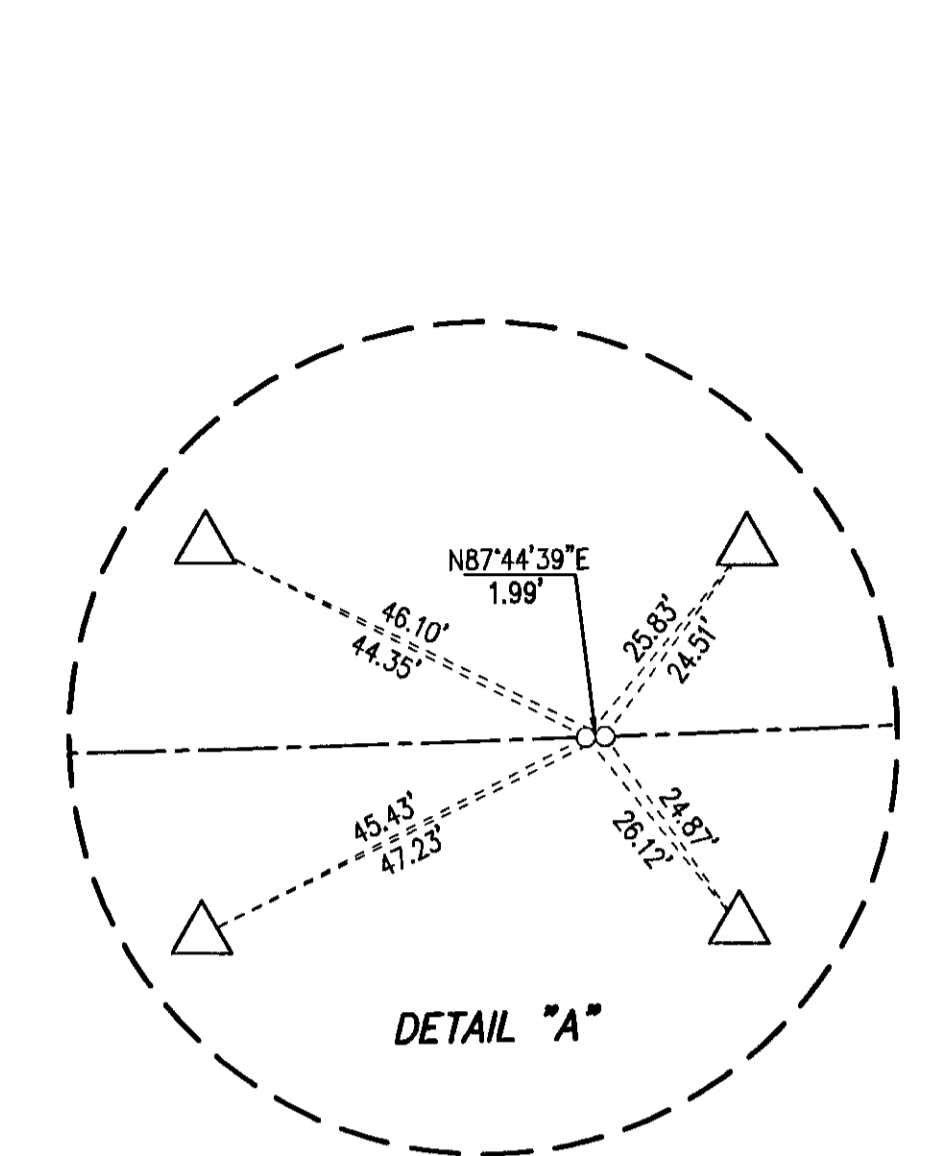
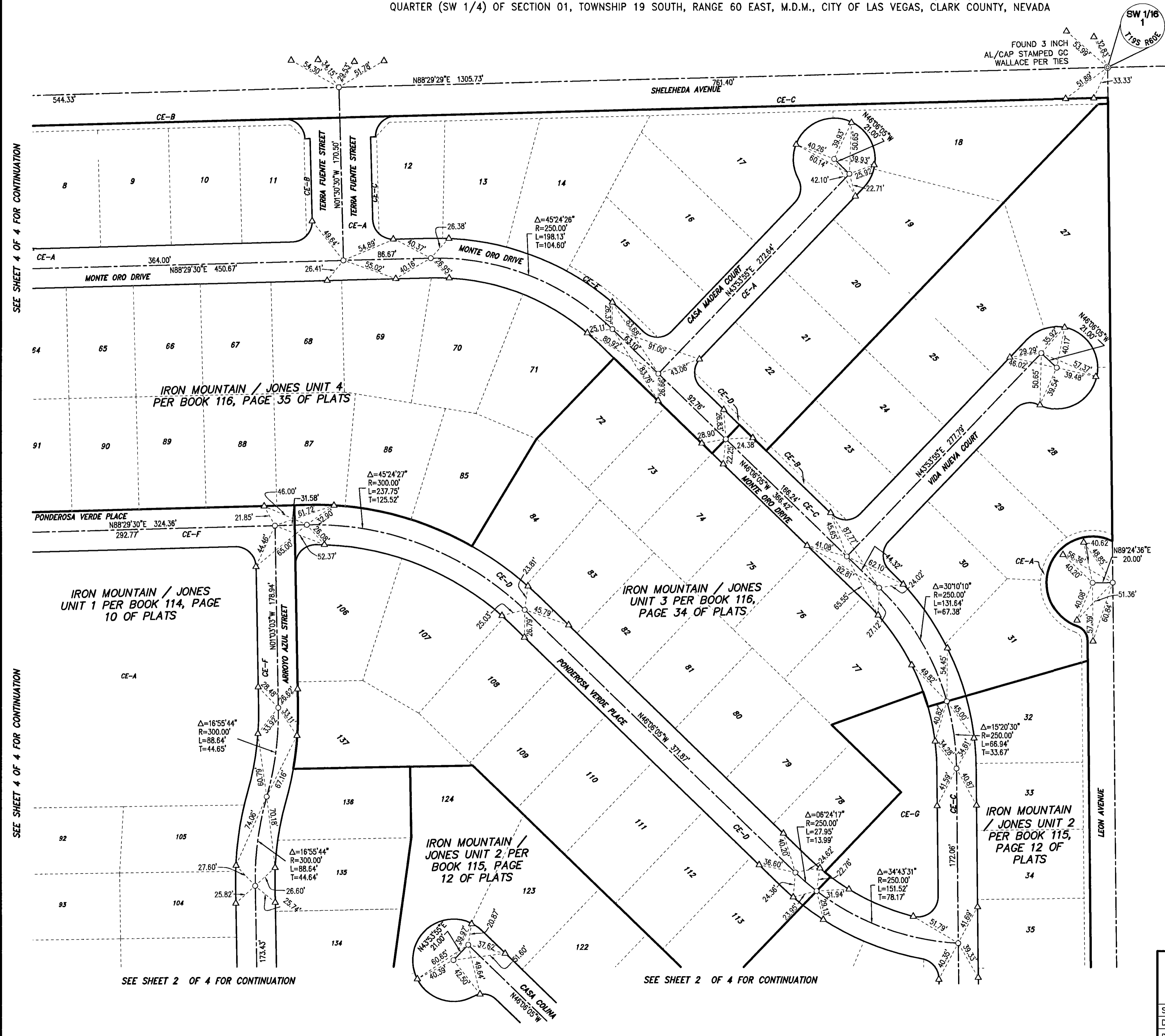
- SUBDIVISION BOUNDARY LINE
- CENTERLINE
- RIGHT-OF-WAY LINE
- LOT LINE
- 17 / CE-F** LOT NUMBER / COMMON LOT PER BOOK 119, PAGE 66 OF PLATS
- SET TYPE III MONUMENT STAMPED PLS 8352
- △ SET TYPE IV REFERENCE MONUMENT STAMPED PLS 8352
- ⊕ SET TYPE II MONUMENT STAMPED PLS 8352
- ⊙ MONUMENT AS DESCRIBED



<b>Carter Burgess</b>		6655 Bermuda Road Las Vegas, Nevada 89119 (702) 938-5400 (702) 938-5454	
Consultants in Planning, Engineering, Construction Management, and Related Services			
SCALE:	1"=50'	JOB NO.:	240570
DRAWING FILE:	0570_MON	DRN. BY:	DMP/JF
DATE:	11-08-2008	CKD. BY:	BB
		SHEET	OF
		2	4

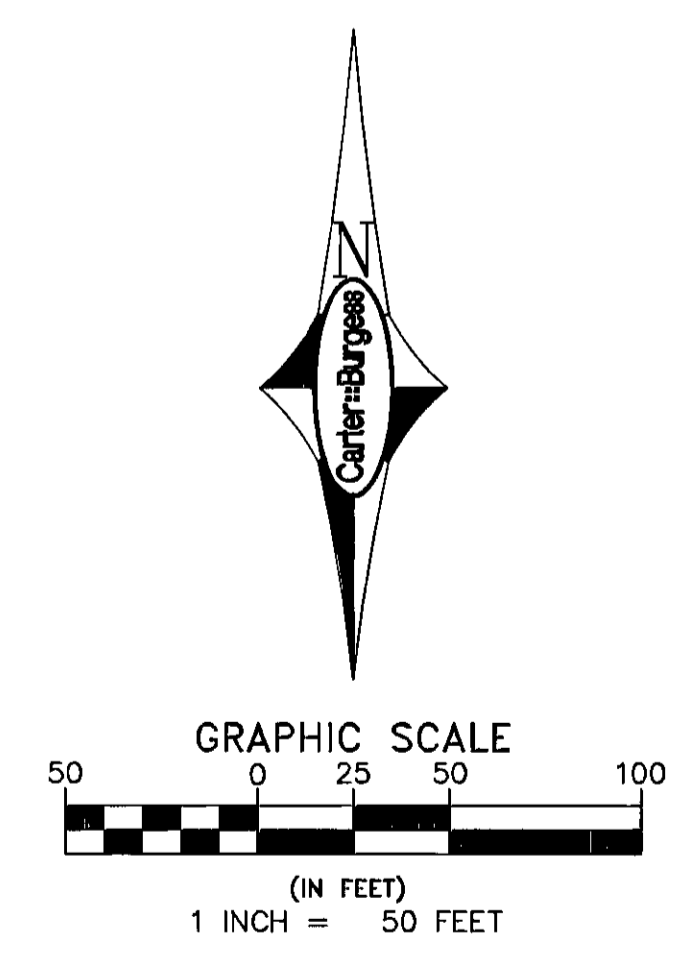
# MONUMENT TIE MAP IRON MOUNTAIN / JONES UNIT 1-4

RECORDED IN BOOK 114, PAGE 10 OF PLATS, BOOK 115, PAGE 12 OF PLATS, BOOK 116, PAGE 34 OF PLATS, AND BOOK 116, PAGE 35 OF PLATS IN THE CLARK COUNTY RECORDERS OFFICE, CLARK COUNTY, NEVADA, LYING WITHIN THE SOUTH HALF (S 1/2) OF THE SOUTHWEST QUARTER (SW 1/4) OF SECTION 01, TOWNSHIP 19 SOUTH, RANGE 60 EAST, M.D.M., CITY OF LAS VEGAS, CLARK COUNTY, NEVADA



### LEGEND

- SUBDIVISION BOUNDARY LINE
- - - CENTERLINE
- RIGHT-OF-WAY LINE
- - - LOT LINE
- 17 / CE-F LOT NUMBER / COMMON LOT PER BOOK 119, PAGE 66 OF PLATS
- SET TYPE III MONUMENT STAMPED PLS 8352
- △ SET TYPE IV REFERENCE MONUMENT STAMPED PLS 8352
- ⊕ SET TYPE II MONUMENT STAMPED PLS 8352
- ⊙ MONUMENT AS DESCRIBED

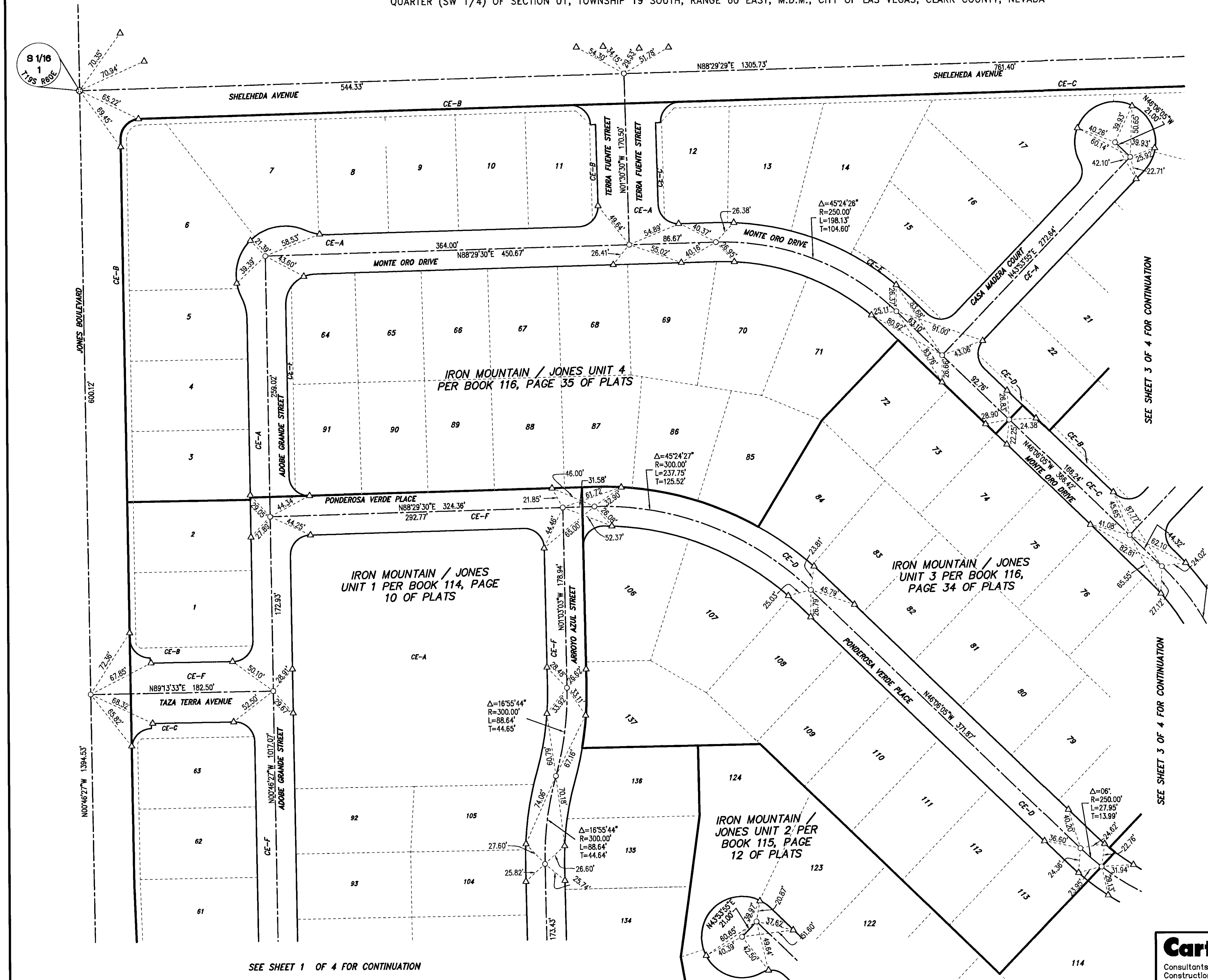


**Carter Burgess** 6655 Bermuda Road  
Las Vegas, Nevada 89119  
(702) 938-5400  
Consultants in Planning, Engineering, Construction Management, and Related Services (702) 938-5454

SCALE: 1"=50'	JOB NO.: 240570	SHEET	OF
DRAWING FILE: 0570_MON	DRN. BY: DMP/JF	3	4
DATE: 11-06-2008	CKD. BY: BB		

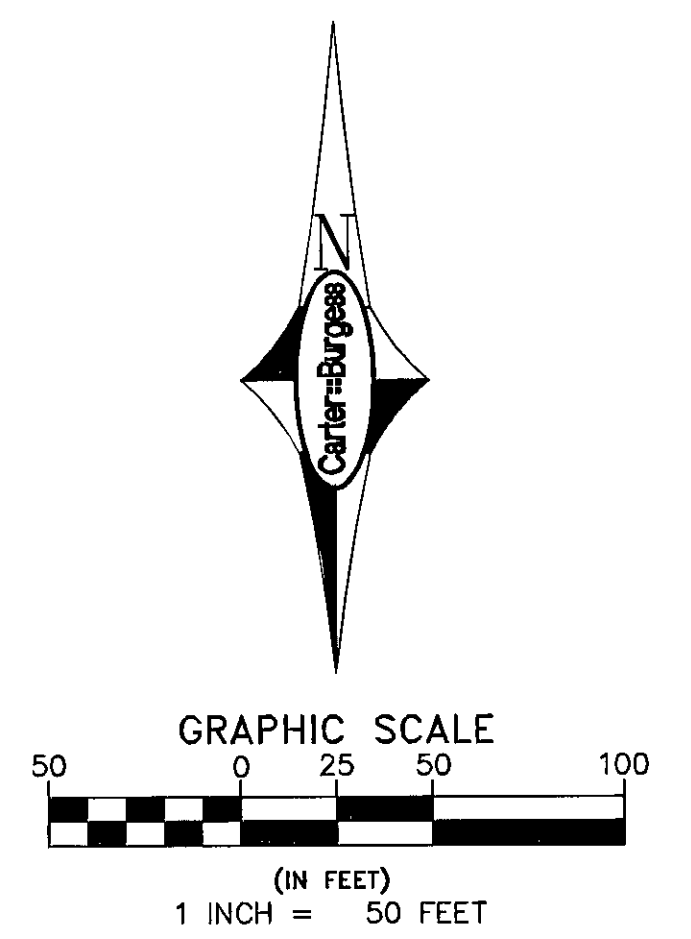
# MONUMENT TIE MAP IRON MOUNTAIN / JONES UNIT 1-4

RECORDED IN BOOK 114, PAGE 10 OF PLATS, BOOK 115, PAGE 12 OF PLATS, BOOK 116, PAGE 34 OF PLATS, AND BOOK 116, PAGE 35 OF PLATS IN THE CLARK COUNTY RECORDERS OFFICE, CLARK COUNTY, NEVADA, LYING WITHIN THE SOUTH HALF (S 1/2) OF THE SOUTHWEST QUARTER (SW 1/4) OF SECTION 01, TOWNSHIP 19 SOUTH, RANGE 60 EAST, M.D.M., CITY OF LAS VEGAS, CLARK COUNTY, NEVADA



### LEGEND

- SUBDIVISION BOUNDARY LINE
- CENTERLINE
- RIGHT-OF-WAY LINE
- LOT LINE
- 17 / CE-F LOT NUMBER / COMMON LOT PER BOOK 119, PAGE 66 OF PLATS
- SET TYPE III MONUMENT STAMPED PLS 8352
- SET TYPE IV REFERENCE MONUMENT STAMPED PLS 8352
- SET TYPE II MONUMENT STAMPED PLS 8352
- MONUMENT AS DESCRIBED



SEE SHEET 1 OF 4 FOR CONTINUATION

SEE SHEET 1 OF 4 FOR CONTINUATION

**Carter-Burgess** 6655 Bermuda Road  
Las Vegas, Nevada 89119  
(702) 938-5400  
(702) 938-5454

Consultants in Planning, Engineering,  
Construction Management, and Related Services

SCALE: 1"=50'	JOB NO.: 240570	SHEET	OF
DRAWING FILE: 0570_MON	DRN. BY: DMP/JF	4	4
DATE: 11-06-2008	CKD. BY: BB		