

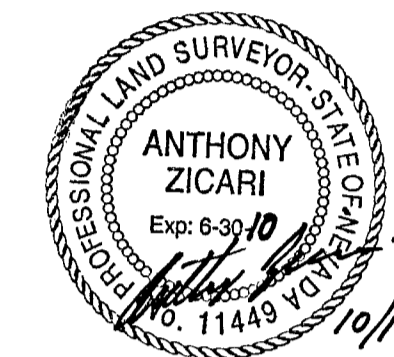
IRON MOUNTAIN RANCH - VILLAGE 9 - UNIT 3

MONUMENTATION TIE MAP

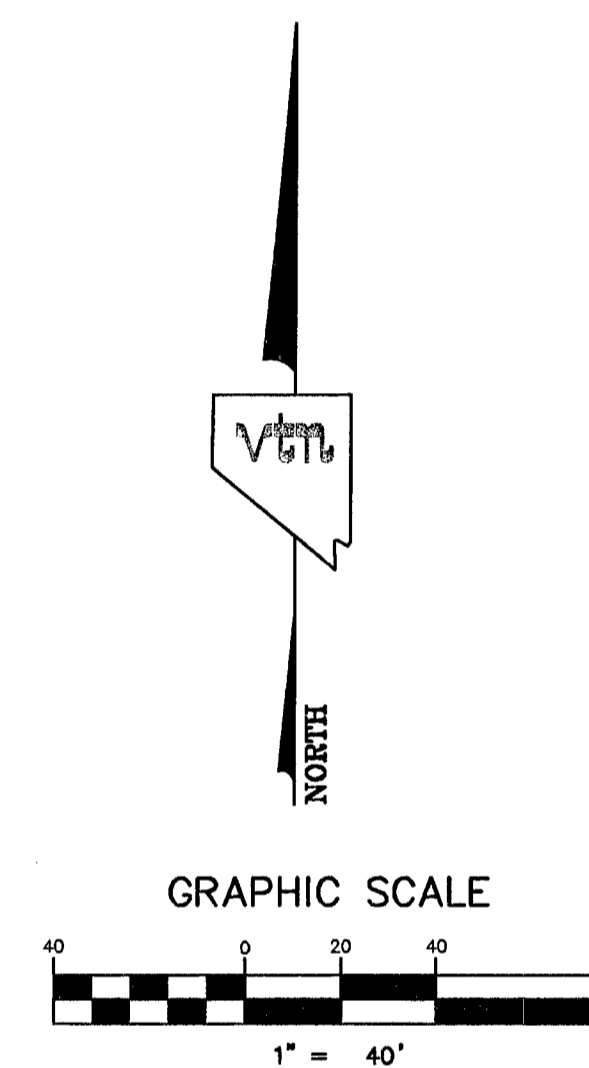
(A COMMON INTEREST COMMUNITY)
 LOCATED WITHIN THE NORTHWEST QUARTER (NW 1/4) OF THE
 NORTHEAST QUARTER (NE 1/4) OF SECTION 12,
 TOWNSHIP 19 SOUTH, RANGE 60 EAST, M.D.M.,
 CITY OF LAS VEGAS, CLARK COUNTY, NEVADA

SURVEYOR'S NOTE:

I, ANTHONY ZICARI, A PROFESSIONAL LAND SURVEYOR LICENSED IN THE STATE OF NEVADA, DO HEREBY CERTIFY THAT THE MONUMENTS HAVE BEEN SET AND THE TIE DISTANCES ESTABLISHED ARE SHOWN HEREON. THIS SURVEY WAS COMPLETED ON AUGUST 11, 2006.



ANTHONY ZICARI, P.L.S.
 NEVADA LICENSE NO. 11449



LEGEND

- 2** LOT NUMBER
- RIGHT OF WAY
- LOT LINES
- UNIT BOUNDARY
- STREET CENTERLINE
- BACK OF CURB LINE
- TYPE III MONUMENT - 5/8" REBAR AND AL. CAP STAMPED "VTN PLS 11449" WITH REFERENCE MONUMENTS IN TOP OF CURB
- TYPE IV-A REFERENCE MONUMENTS STAMPED "VTN PLS 11449" IN TOP OF CURB
- FOUND TYPE III MONUMENT - 5/8" REBAR AND AL. CAP STAMPED "VTN PLS 11449" WITH REFERENCE MONUMENTS IN TOP OF CURB PER IRON MOUNTAIN RANCH - VILLAGE 9 - UNIT 2
- FOUND TYPE IV-A REFERENCE MONUMENTS STAMPED "VTN PLS 11449" IN TOP OF CURB SET PER IRON MOUNTAIN RANCH - VILLAGE 9 - UNIT 2
- ◆ TYPE I MONUMENT - 2" BRASS CAP IN WELL MONUMENT STAMPED "VTN PLS 11449" WITH REFERENCE MONUMENTS IN TOP OF CURB
- ⊙ FOUND MONUMENT AS NOTED

NOTES

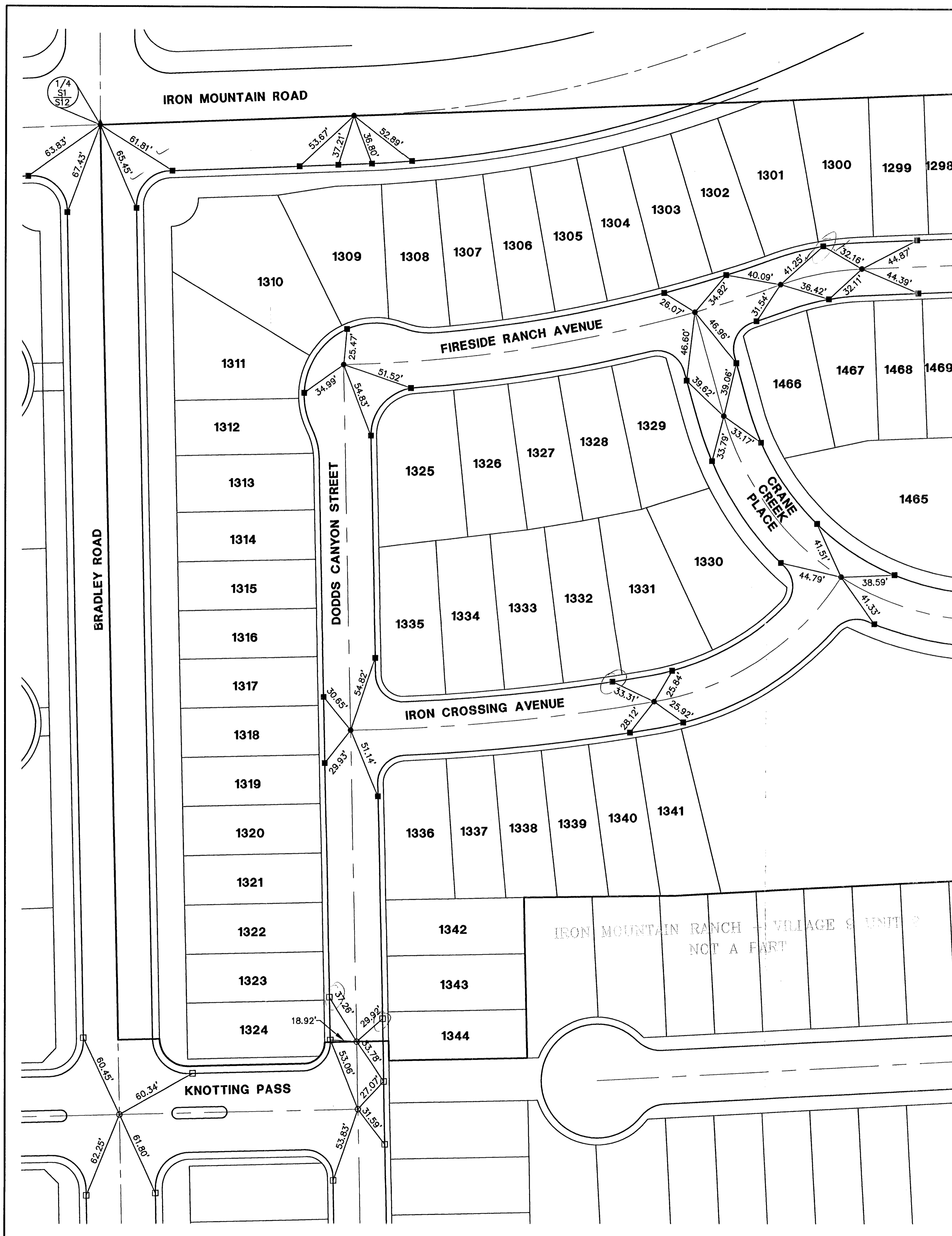
SEE FINAL MAP FOR BEARING AND DISTANCES.
 (BOOK 118, PAGE 0053)

HANSEN 16730

CONSULTING ENGINEERS • PLANNERS • LAND SURVEYORS
 2727 SOUTH RAINBOW BOULEVARD
 LAS VEGAS, NEVADA 89102
 NEVADA (702) 873 - 7550 FAX (702) 362 - 2597

MONUMENTATION TIE MAP
 FOR
 IRON MOUNTAIN RANCH - VILLAGE 9 - UNIT 3
 (BOOK 118 OF PLATS, PAGE 53)
 LOCATED WITHIN THE NW 1/4 OF THE NE 1/4 OF
 S. 12, T. 19 S., R. 60 E., M.D.M.,
 CITY OF LAS VEGAS, CLARK COUNTY, NEVADA.

SCALE: 1" = 40'	W.O.# 5975	DATE: 10/14/08	SHEET	OF
FILE: 5975MTM	DRN. BY: SP	REV.:	1	2
	CKD. BY: TZ			

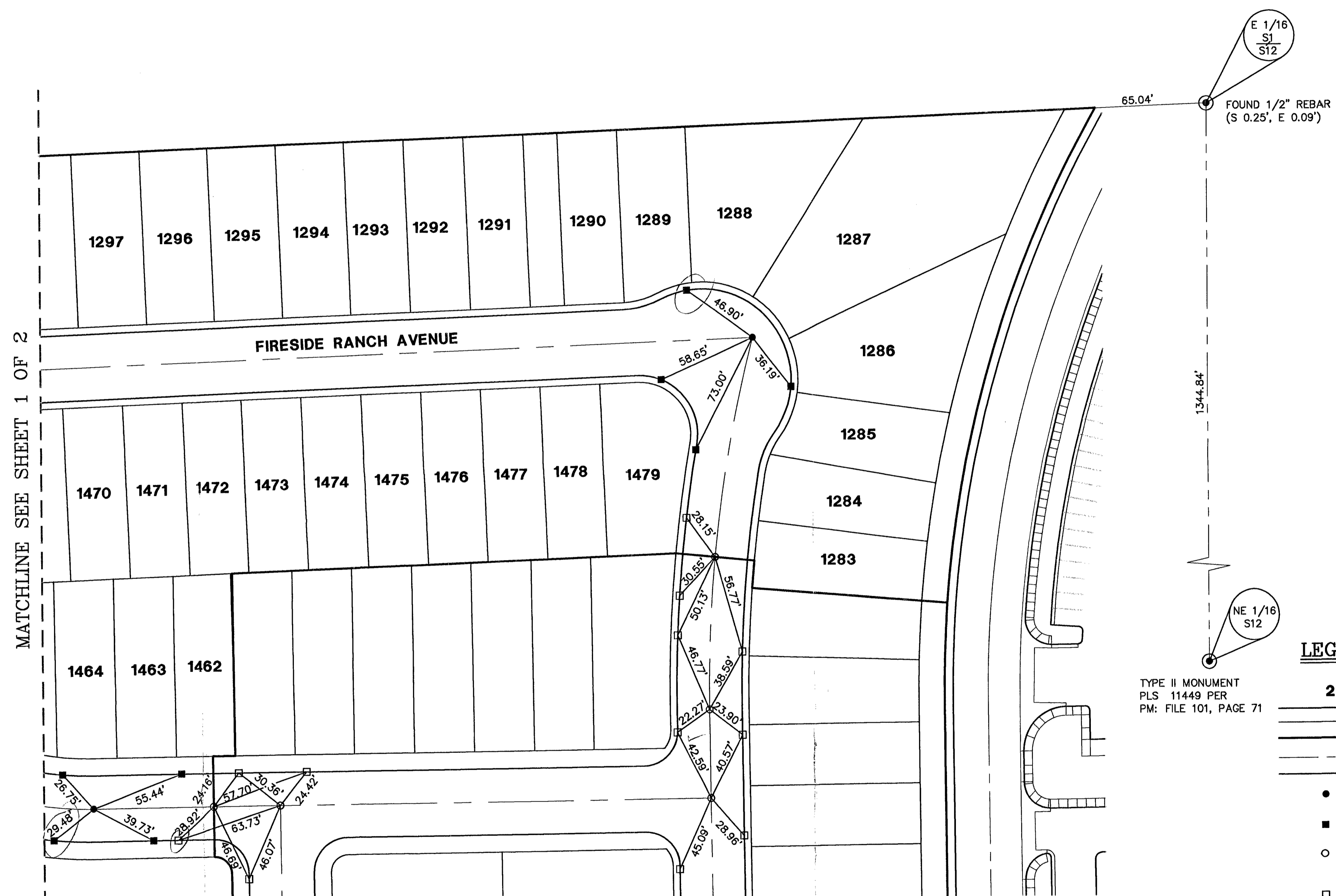


MATCHLINE SEE SHEET 2 OF 2

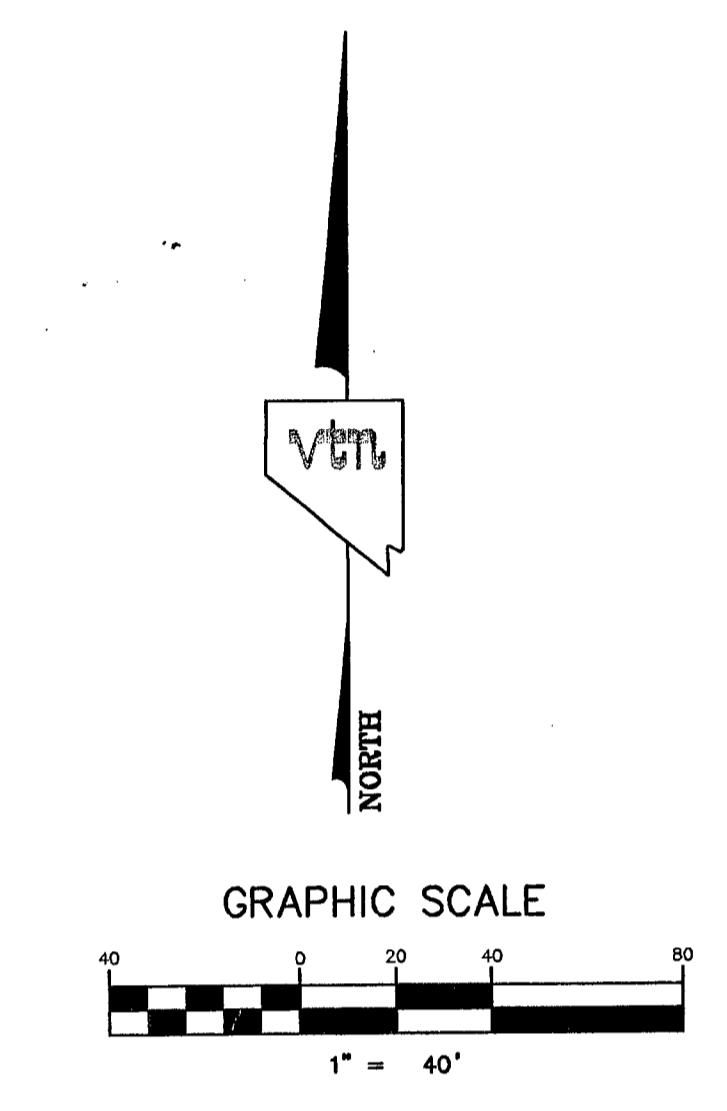
IRON MOUNTAIN RANCH - VILLAGE 9 - UNIT 3

MONUMENTATION TIE MAP

(A COMMON INTEREST COMMUNITY)
 LOCATED WITHIN THE NORTHWEST QUARTER (NW 1/4) OF THE
 NORTHEAST QUARTER (NE 1/4) OF SECTION 12,
 TOWNSHIP 19 SOUTH, RANGE 60 EAST, M.D.M.,
 CITY OF LAS VEGAS, CLARK COUNTY, NEVADA



MATCHLINE SEE SHEET 1 OF 2



NOTES
 SEE FINAL MAP FOR BEARING AND DISTANCES.
 (BOOK 118, PAGE 0053)

LEGEND

- 2 LOT NUMBER
- RIGHT OF WAY
- LOT LINES
- UNIT BOUNDARY
- STREET CENTERLINE
- BACK OF CURB LINE
- TYPE III MONUMENT - 5/8" REBAR AND AL. CAP STAMPED "VTN PLS 11449" WITH REFERENCE MONUMENTS IN TOP OF CURB
- TYPE IV-A REFERENCE MONUMENTS STAMPED "VTN PLS 11449" IN TOP OF CURB
- FOUND TYPE III MONUMENT - 5/8" REBAR AND AL. CAP STAMPED "VTN PLS 11449" WITH REFERENCE MONUMENTS IN TOP OF CURB PER IRON MOUNTAIN RANCH - VILLAGE 9 - UNIT 2
- FOUND TYPE IV-A REFERENCE MONUMENTS STAMPED "VTN PLS 11449" IN TOP OF CURB SET PER IRON MOUNTAIN RANCH - VILLAGE 9 - UNIT 2
- ⊙ FOUND MONUMENT AS NOTED

CONSULTING ENGINEERS • PLANNERS • LAND SURVEYORS 2727 SOUTH RAINBOW BOULEVARD LAS VEGAS, NEVADA 89102 (702) 873 - 7550 FAX (702) 362 - 2597			
MONUMENTATION TIE MAP FOR IRON MOUNTAIN RANCH - VILLAGE 9 - UNIT 3 (BOOK 118 OF PLATS, PAGE 53) LOCATED WITHIN THE NW 1/4 OF THE NE 1/4 OF S. 12, T. 19 S., R. 60 E., M.D.M., CITY OF LAS VEGAS, CLARK COUNTY, NEVADA.			
SCALE: 1" = 40'	W.O.# 5975	DATE: 10/14/08	SHEET
FILE: 5975MTM	DRN. BY: SP	REV.:	OF
	CKD. BY: TZ		2
			2