

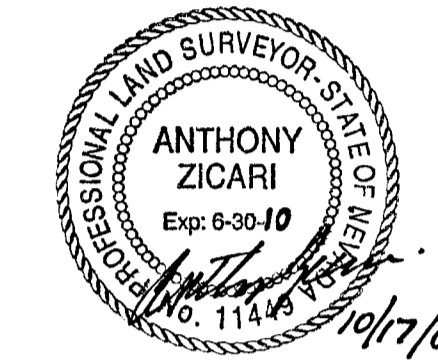
IRON MOUNTAIN RANCH - VILLAGE 9 - UNIT 2

MONUMENTATION TIE MAP

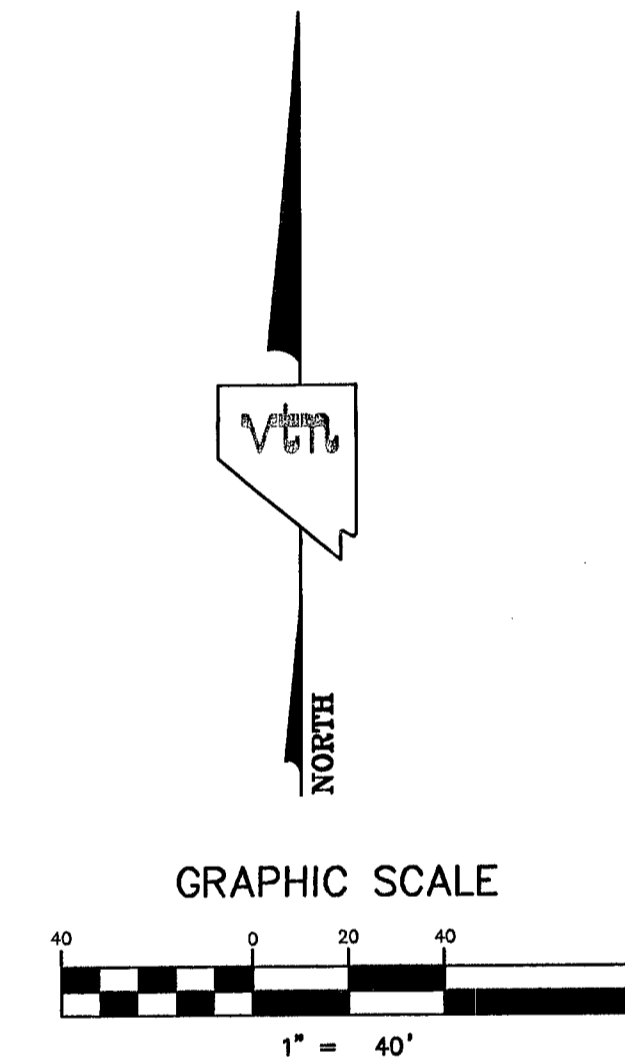
(A COMMON INTEREST COMMUNITY)
 LOCATED WITHIN THE NORTHWEST QUARTER (NW 1/4) OF THE
 NORTHEAST QUARTER (NE 1/4) OF SECTION 12,
 TOWNSHIP 19 SOUTH, RANGE 60 EAST, M.D.M.,
 CITY OF LAS VEGAS, CLARK COUNTY, NEVADA.

SURVEYOR'S NOTE:

I, ANTHONY ZICARI, A PROFESSIONAL LAND SURVEYOR LICENSED IN THE STATE OF NEVADA, DO HEREBY CERTIFY THAT THE MONUMENTS HAVE BEEN SET AND THE TIE DISTANCES ESTABLISHED AS SHOWN HEREON. THIS SURVEY WAS COMPLETED ON MAY 19, 2006.



ANTHONY ZICARI, P.L.S.
 NEVADA LICENSE NO. 11449

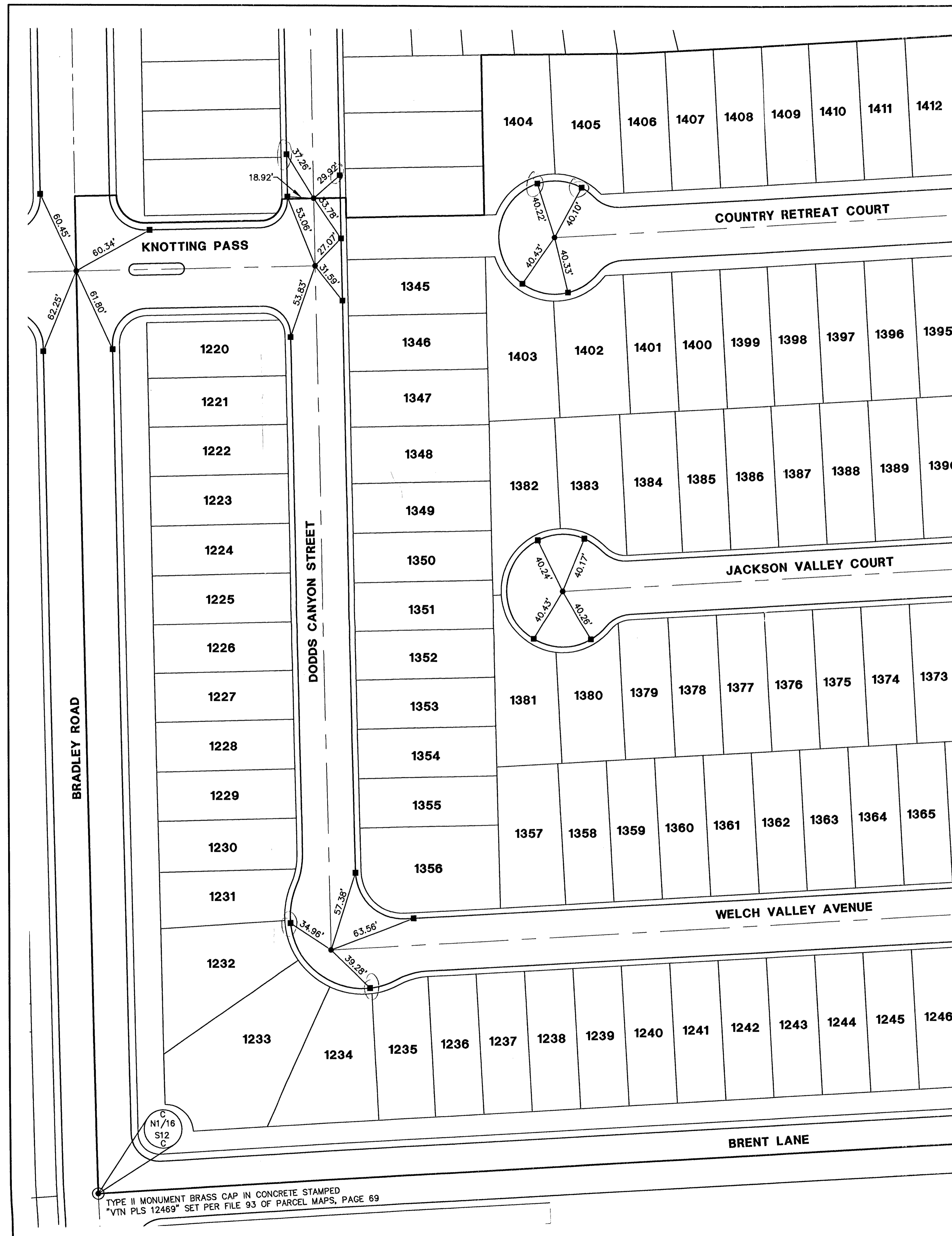


LEGEND

- 2** LOT NUMBER
- RIGHT OF WAY
- LOT LINES
- UNIT BOUNDARY
- STREET CENTERLINE
- BACK OF CURB LINE
- TYPE III MONUMENT - 5/8" REBAR AND AL. CAP STAMPED "VTN PLS 11449" WITH REFERENCE MONUMENTS IN TOP OF CURB
- TYPE IV-A REFERENCE MONUMENTS STAMPED "VTN PLS 11449" IN TOP OF CURB
- FOUND TYPE III MONUMENT - 5/8" REBAR AND AL. CAP STAMPED "VTN PLS 11449" WITH REFERENCE MONUMENTS IN TOP OF CURB PER IRON MOUNTAIN RANCH - VILLAGE 9 - UNIT 1
- FOUND TYPE IV-A REFERENCE MONUMENTS STAMPED "VTN PLS 11449" IN TOP OF CURB SET PER IRON MOUNTAIN RANCH - VILLAGE 9 - UNIT 1
- ⊙ FOUND MONUMENT AS NOTED

NOTES

SEE FINAL MAP FOR BEARING AND DISTANCES.
 (BOOK 114, PAGE 0078)



MATCHLINE SEE SHEET 2 OF 2

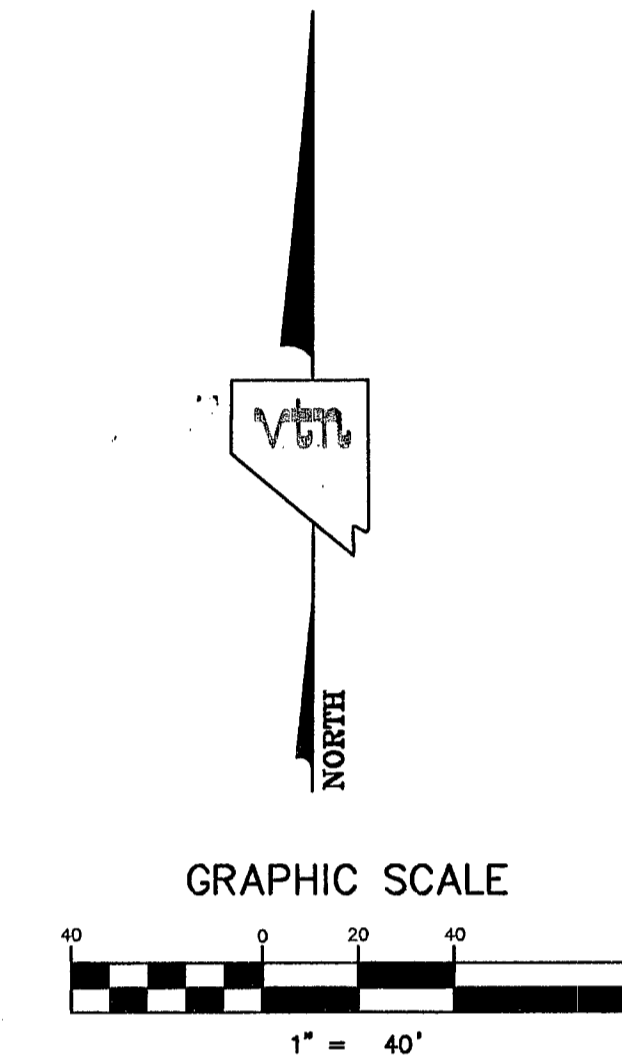
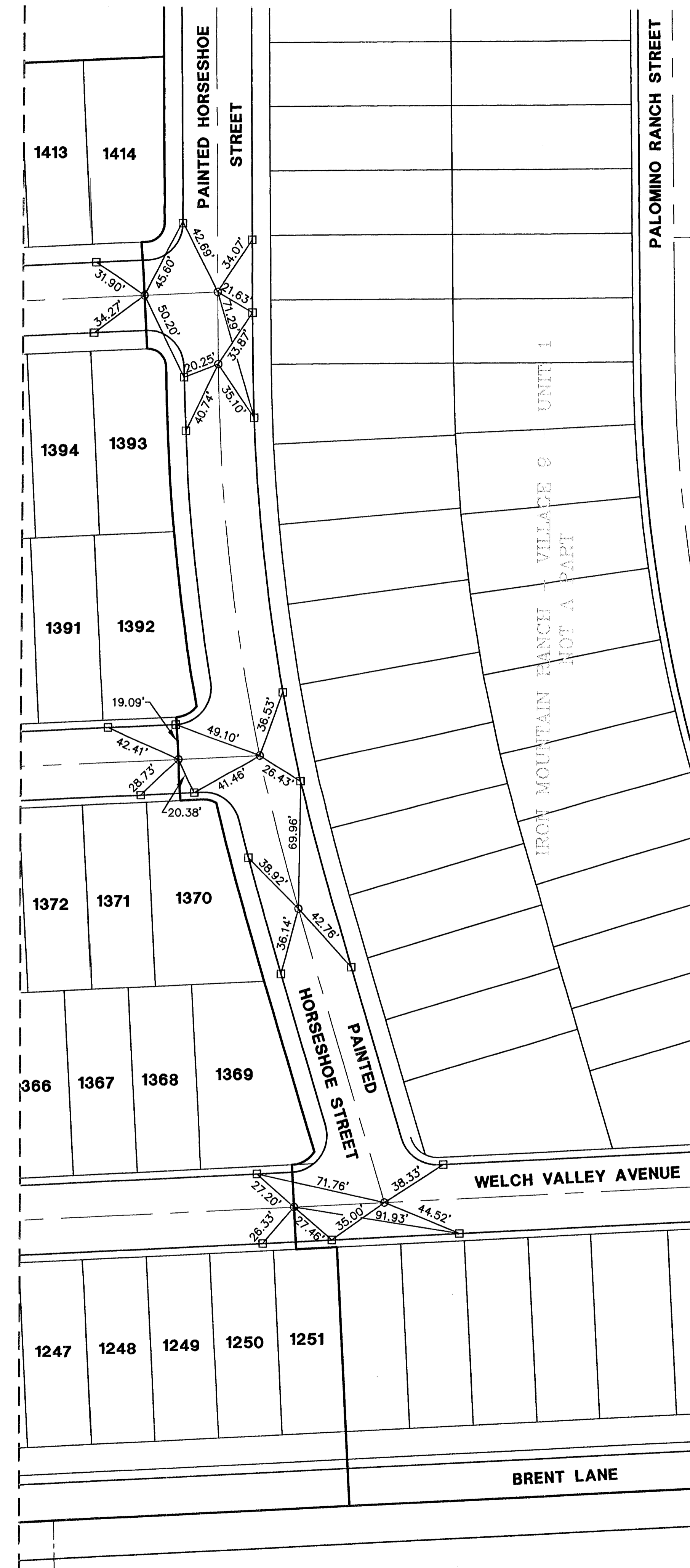
HANSEN 14033

CONSULTING ENGINEERS • PLANNERS • LAND SURVEYORS 2727 SOUTH RAINBOW BOULEVARD LAS VEGAS, NEVADA 89102 (702) 873 - 7550 FAX (702) 362 - 2597			
MONUMENTATION TIE MAP FOR IRON MOUNTAIN RANCH - VILLAGE 9 - UNIT 2 (BOOK 114 OF PLATS, PAGE 78) LOCATED WITHIN THE NW 1/4 OF THE NE 1/4 OF S. 12, T. 19 S., R. 60 E., M.D.M., CITY OF LAS VEGAS, CLARK COUNTY, NEVADA.			
SCALE: 1" = 40'	W.O.# 5975	DATE: 10/14/08	SHEET
FILE: 5975MTM	DRN. BY: SP	REV.:	1
	CKD. BY: TZ		2

IRON MOUNTAIN RANCH - VILLAGE 9 - UNIT 2 MONUMENTATION TIE MAP

(A COMMON INTEREST COMMUNITY)
LOCATED WITHIN THE NORTHWEST QUARTER (NW 1/4) OF THE
NORTHEAST QUARTER (NE 1/4) OF SECTION 12,
TOWNSHIP 19 SOUTH, RANGE 60 EAST, M.D.M.,
CITY OF LAS VEGAS, CLARK COUNTY, NEVADA

MATCHLINE SEE SHEET 1 OF 2



NOTES

SEE FINAL MAP FOR BEARING AND DISTANCES.
(BOOK 114, PAGE 0078)

LEGEND

- 2** LOT NUMBER
- RIGHT OF WAY
- LOT LINES
- UNIT BOUNDARY
- STREET CENTERLINE
- BACK OF CURB LINE
- TYPE III MONUMENT - 5/8" REBAR AND AL. CAP STAMPED "VTN PLS 11449" WITH REFERENCE MONUMENTS IN TOP OF CURB
- TYPE IV-A REFERENCE MONUMENTS STAMPED "VTN PLS 11449" IN TOP OF CURB
- FOUND TYPE III MONUMENT - 5/8" REBAR AND AL. CAP STAMPED "VTN PLS 11449" WITH REFERENCE MONUMENTS IN TOP OF CURB PER IRON MOUNTAIN RANCH - VILLAGE 9 - UNIT 1
- FOUND TYPE IV-A REFERENCE MONUMENTS STAMPED "VTN PLS 11449" IN TOP OF CURB SET PER IRON MOUNTAIN RANCH - VILLAGE 9 - UNIT 1
- ⊙ FOUND MONUMENT AS NOTED

NE1/16 S12

481.45'
BRASS CAP IN CONCRETE
STAMPED "VTN PLS 11449" SET PER
PARCEL MAP: FILE 101, PAGE 71.

CONSULTING ENGINEERS • PLANNERS • LAND SURVEYORS 2727 SOUTH RAINBOW BOULEVARD LAS VEGAS, NEVADA 89102 (702) 873 - 7550 FAX (702) 362 - 2597			
MONUMENTATION TIE MAP FOR IRON MOUNTAIN RANCH - VILLAGE 9 - UNIT 2 (BOOK 114 OF PLATS, PAGE 78) LOCATED WITHIN THE NW 1/4 OF THE NE 1/4 OF S. 12, T. 19 S., R. 60 E., M.D.M., CITY OF LAS VEGAS, CLARK COUNTY, NEVADA.			
SCALE: 1" = 40'	W.O.# 5975	DATE: 10/14/08	SHEET OF
FILE: 5975MTM	DRN. BY: SP	REV.:	2 2
	CKD. BY: TZ		