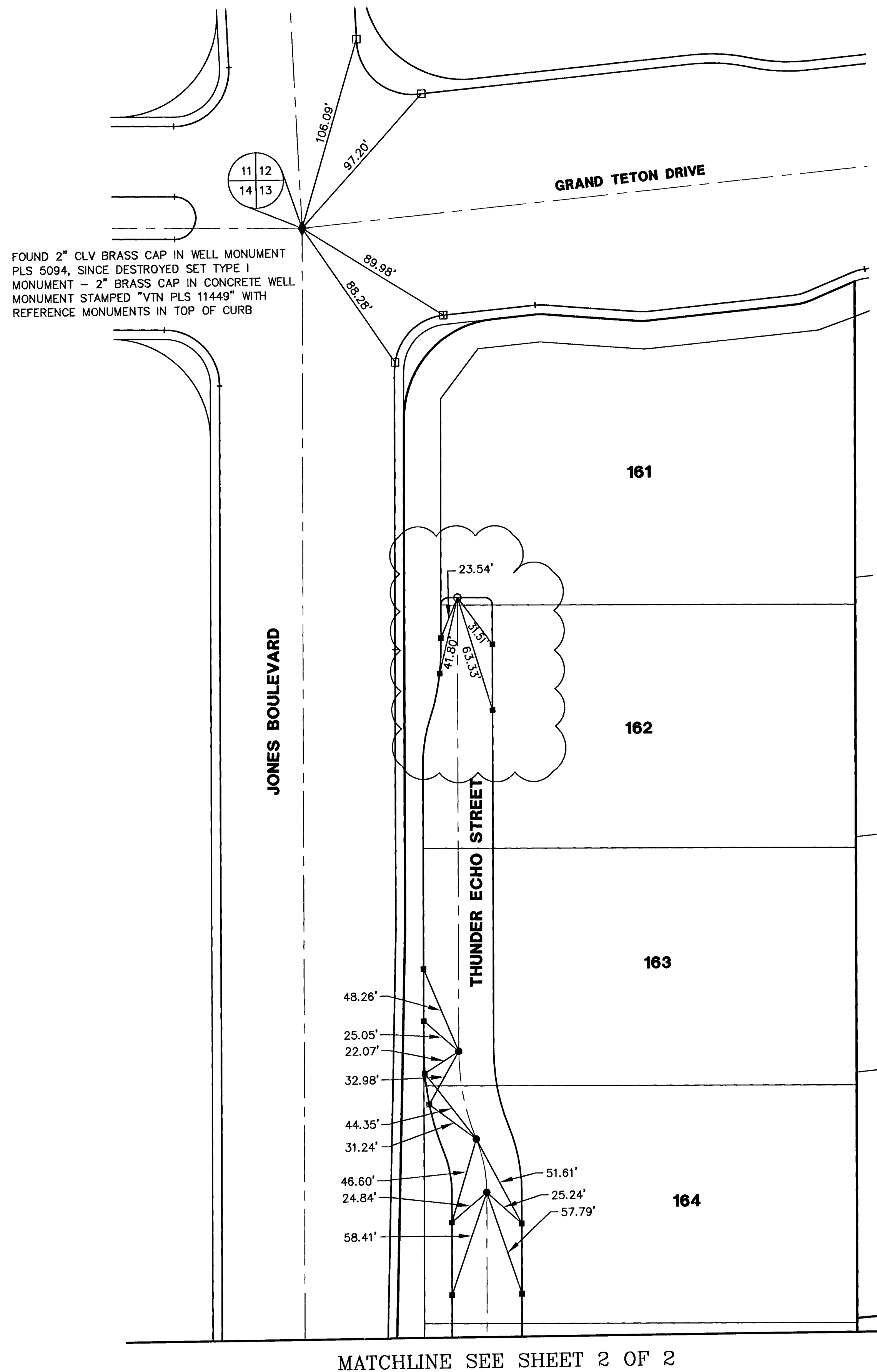


**AMENDED RECORD OF SURVEY
MONUMENTATION TIE MAP**
(FILE 154 OF SURVEYS, PAGE 01)

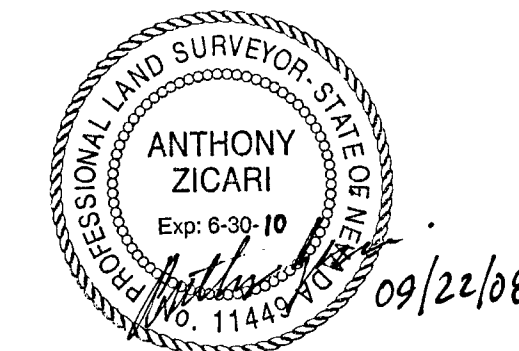
IRON MOUNTAIN RANCH - VILLAGE 1 - UNIT 5
(BOOK 106 OF PLATS, PAGE 0047)
LOCATED WITHIN THE NORTH HALF (N 1/2) OF THE NORTHWEST QUARTER (NW 1/4) OF
SECTION 13, TOWNSHIP 19 SOUTH, RANGE 60 EAST, M.D.M., CITY OF LAS VEGAS, CLARK COUNTY, NEVADA.



SURVEYOR'S CERTIFICATE

- ANTHONY ZICARI, A PROFESSIONAL LAND SURVEYOR LICENSED IN THE STATE OF NEVADA, AS AN AGENT FOR VTN NEVADA, CERTIFY THAT:
- THIS MAP REPRESENTS THE RESULTS OF A SURVEY CONDUCTED UNDER MY DIRECT SUPERVISION AT THE INSTANCE OF IRON MOUNTAIN RANCH ALLIANCE, L.L.C., A NEVADA LIMITED LIABILITY COMPANY.
- THE LANDS SURVEYED LIE WITHIN THE NW 1/4 OF SECTION 13, TOWNSHIP 19 SOUTH, RANGE 60 EAST, M.D.M., CITY OF LAS VEGAS, CLARK COUNTY, NEVADA, AND THE SURVEY WAS COMPLETED ON SEPTEMBER 18, 2008.
- THIS MAP COMPLIES WITH APPLICABLE STATUTES OF THIS STATE AND ANY LOCAL ORDINANCES IN EFFECT ON THE DATE THAT THE SURVEY WAS COMPLETED, AND THE SURVEY WAS CONDUCTED IN ACCORDANCE WITH CHAPTER 625 OF THE NEVADA ADMINISTRATIVE CODE.
- THE MONUMENTS DEPICTED ON THE MAP ARE OF THE CHARACTER SHOWN AND OCCUPY THE POSITIONS INDICATED, AND ARE OF SUFFICIENT NUMBER AND DURABILITY, AND THE TIE DISTANCES ESTABLISHED AS SHOWN HEREON.

ANTHONY ZICARI, P.L.S.
NEVADA LICENSE NO. 11449



AMENDMENT NOTE

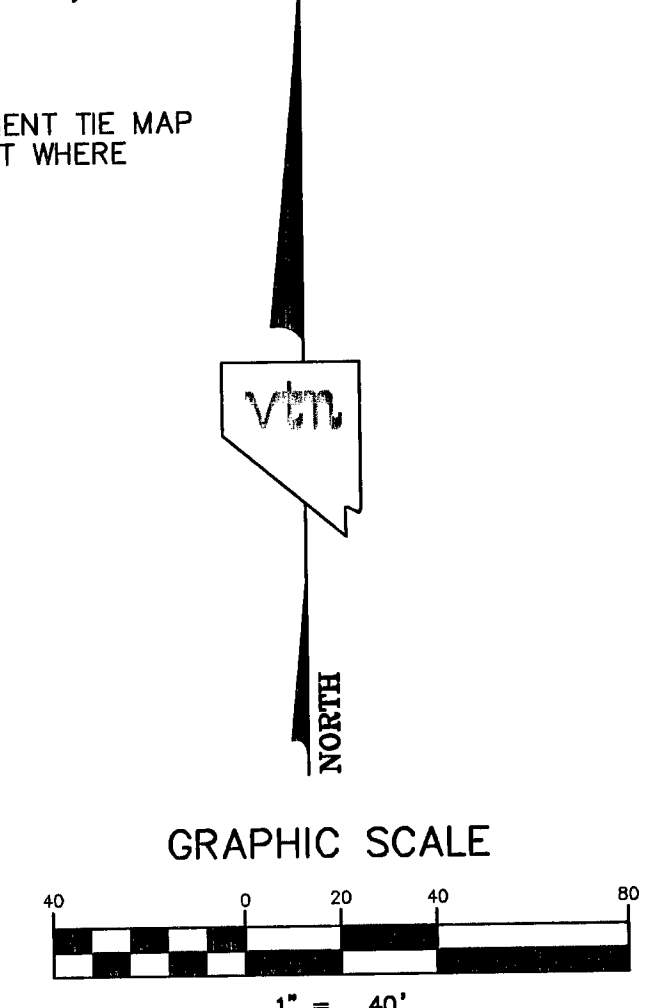
THE PURPOSE OF THIS AMENDED RECORD OF SURVEY/MONUMENT TIE MAP IS TO REPLACE AND RE-STAMP REFERENCE MONUMENTS THAT WERE DESTROYED DURING THE REPAIRING OF CURBING.

NOTES

SEE FINAL MAP FOR BEARING AND DISTANCES.
(BOOK 106, PAGE 0047)

LEGEND

- AMENDED AREA
- 2** LOT NUMBER
- LOT LINES
- UNIT BOUNDARY
- STREET CENTERLINE
- BACK OF CURB LINE
- TYPE III MONUMENT - 5/8" REBAR AND AL. CAP STAMPED "VTN PLS 11449" WITH REFERENCE MONUMENTS IN TOP OF CURB PER BOOK 106 OF PLATS, PAGE 0047.
- TYPE IV-A REFERENCE MONUMENTS STAMPED "VTN PLS 11449" IN TOP OF CURB PER BOOK 106 OF PLATS, PAGE 0047.
- TYPE I MONUMENT - 2" BRASS CAP IN CONCRETE IN WELL MONUMENT STAMPED "VTN PLS 11449" WITH REFERENCE MONUMENTS IN TOP OF CURB SET PER RECORD OF SURVEY: FILE 154, PAGE 01.
- TYPE IV-A REFERENCE MONUMENTS STAMPED "VTN PLS 11449" IN TOP OF CURB SET PER RECORD OF SURVEY: FILE 154, PAGE 01.
- SCRIBE IN TOP OF CURB



COUNTY RECORDER'S NOTE

ANY SUBSEQUENT CHANGES TO THIS MAP SHOULD BE EXAMINED AND MAY BE DETERMINED BY REFERENCE TO THE COUNTY RECORDER'S CUMULATIVE MAP INDEX, N. R. S. 278.5695.

FM-67-02

CONSULTING ENGINEERS • PLANNERS • LAND SURVEYORS vtm nevada 2727 SOUTH RAINBOW BOULEVARD LAS VEGAS, NEVADA 89102-5148 (702) 873-7550 FAX (702) 362-2597				NO. _____ FILED AT THE REQUEST OF : VTN NEVADA DATED _____ AT _____ M FILE _____ PAGE _____ OF SURVEYS OFFICIAL RECORDS BOOK, NO. _____ CLARK COUNTY, NEVADA RECORDS DEBBIE CONWAY, RECORDER FEE \$ _____ DEPUTY _____	
AMENDED RECORD OF SURVEY MONUMENTATION TIE MAP FOR IRON MOUNTAIN RANCH - VILLAGE 1 UNIT 5 (BOOK 106 OF PLATS, PAGE 0047) LOCATED IN THE NW 1/4 OF SECTION 13, TOWNSHIP 19 SOUTH, RANGE 60 EAST, M.D.M., CITY OF LAS VEGAS, CLARK COUNTY, NEVADA					
SCALE: 1" = 40'	W.O.# 5825	DATE: 2/8/2006	SHEET	OF	
FILE: 5825MTM	DRN. BY: JCB	REV.:	1	2	
	CKD. BY:				

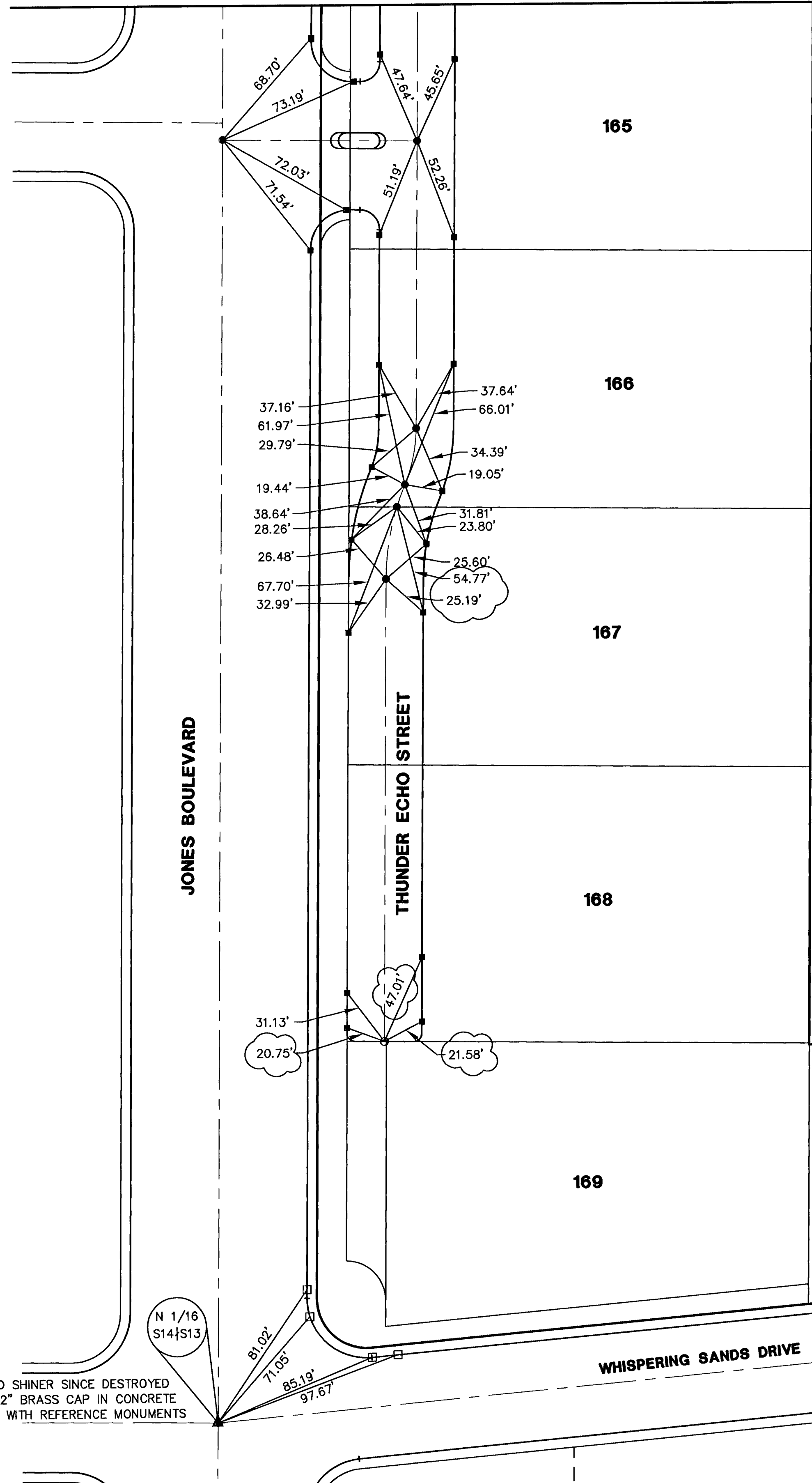
AMENDED RECORD OF SURVEY MONUMENTATION TIE MAP

(FILE 154 OF SURVEYS, PAGE 01)

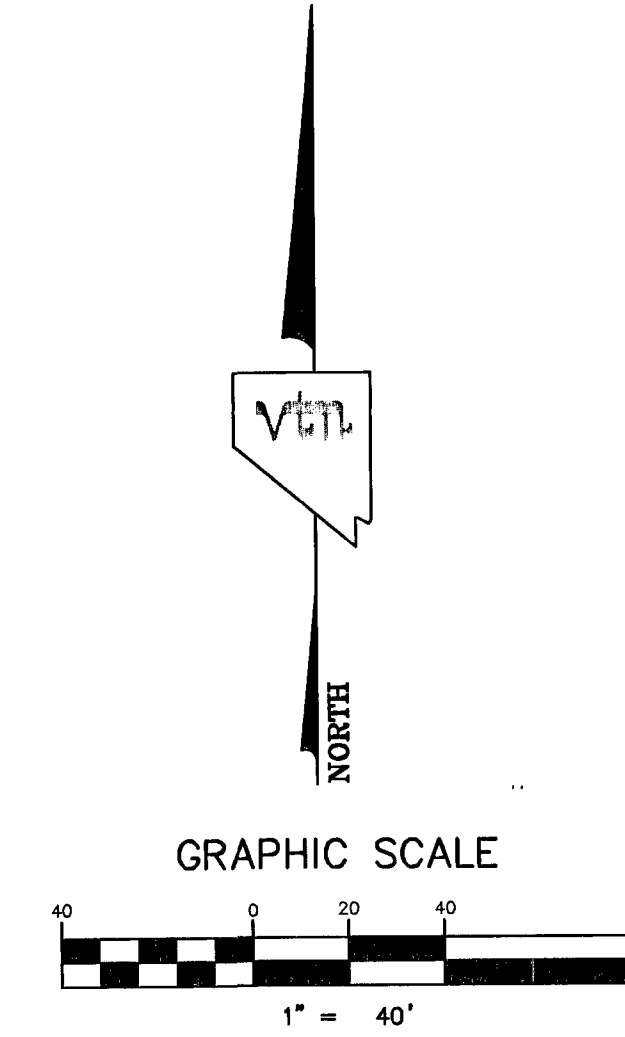
IRON MOUNTAIN RANCH - VILLAGE 1 - UNIT 5
(BOOK 106 OF PLATS, PAGE 0047)

LOCATED WITHIN THE NORTH HALF (N 1/2) OF THE NORTHWEST QUARTER (NW 1/4) OF
SECTION 13, TOWNSHIP 19 SOUTH, RANGE 60 EAST, M.D.M., CITY OF LAS VEGAS, CLARK COUNTY, NEVADA

MATCHLINE SEE SHEET 1 OF 2



FOUND CONCRETE NAIL AND SHINER SINCE DESTROYED
SET TYPE II MONUMENT - 2" BRASS CAP IN CONCRETE
STAMPED "VTN PLS 11449" WITH REFERENCE MONUMENTS
IN TOP OF CURB.



NOTES

SEE FINAL MAP FOR BEARING AND DISTANCES.
(BOOK 106, PAGE 0047)

LEGEND

- AMENDED AREA
- 2** LOT NUMBER
- LOT LINES
- UNIT BOUNDARY
- STREET CENTERLINE
- BACK OF CURB LINE
- TYPE III MONUMENT - 5/8" REBAR AND AL. CAP STAMPED "VTN PLS 11449" WITH REFERENCE MONUMENTS IN TOP OF CURB PER BOOK 106 OF PLATS, PAGE 0047.
- TYPE IV-A REFERENCE MONUMENTS STAMPED "VTN PLS 11449" IN TOP OF CURB PER BOOK 106 OF PLATS, PAGE 0047.
- TYPE II MONUMENT - 2" BRASS CAP IN CONCRETE STAMPED "VTN PLS 11449" WITH REFERENCE MONUMENTS IN TOP OF CURB PER RECORD OF SURVEY: FILE 154, PAGE 01.
- TYPE IV-A REFERENCE MONUMENTS STAMPED "VTN PLS 11449" IN TOP OF CURB PER RECORD OF SURVEY: FILE 154, PAGE 01.
- SCRIBE IN TOP OF CONCRETE

COUNTY RECORDER'S NOTE

ANY SUBSEQUENT CHANGES TO THIS MAP SHOULD BE EXAMINED
AND MAY BE DETERMINED BY REFERENCE TO THE COUNTY
RECORDER'S CUMULATIVE MAP INDEX, N. R. S. 278. 5695.

FM-67-02

CONSULTING ENGINEERS • PLANNERS • LAND SURVEYORS 2727 SOUTH RAINBOW BOULEVARD LAS VEGAS, NEVADA 89102-5148 (702) 873-7550 FAX (702) 362-2597			
AMENDED RECORD OF SURVEY MONUMENTATION TIE MAP FOR IRON MOUNTAIN RANCH VILLAGE 1 - UNIT 5 (BOOK 106 OF PLATS, PAGE 0047) LOCATED IN THE NW 1/4 OF SECTION 13, TOWNSHIP 19 SOUTH, RANGE 60 EAST, M.D.M., CITY OF LAS VEGAS, CLARK COUNTY, NEVADA			
SCALE: 1" = 40'	W.O.# 5825	DATE 2/8/2006	SHEET OF
FILE: 5825MTM	DRN. BY: JCB	REV.:	2 OF 2
	CKD. BY:		