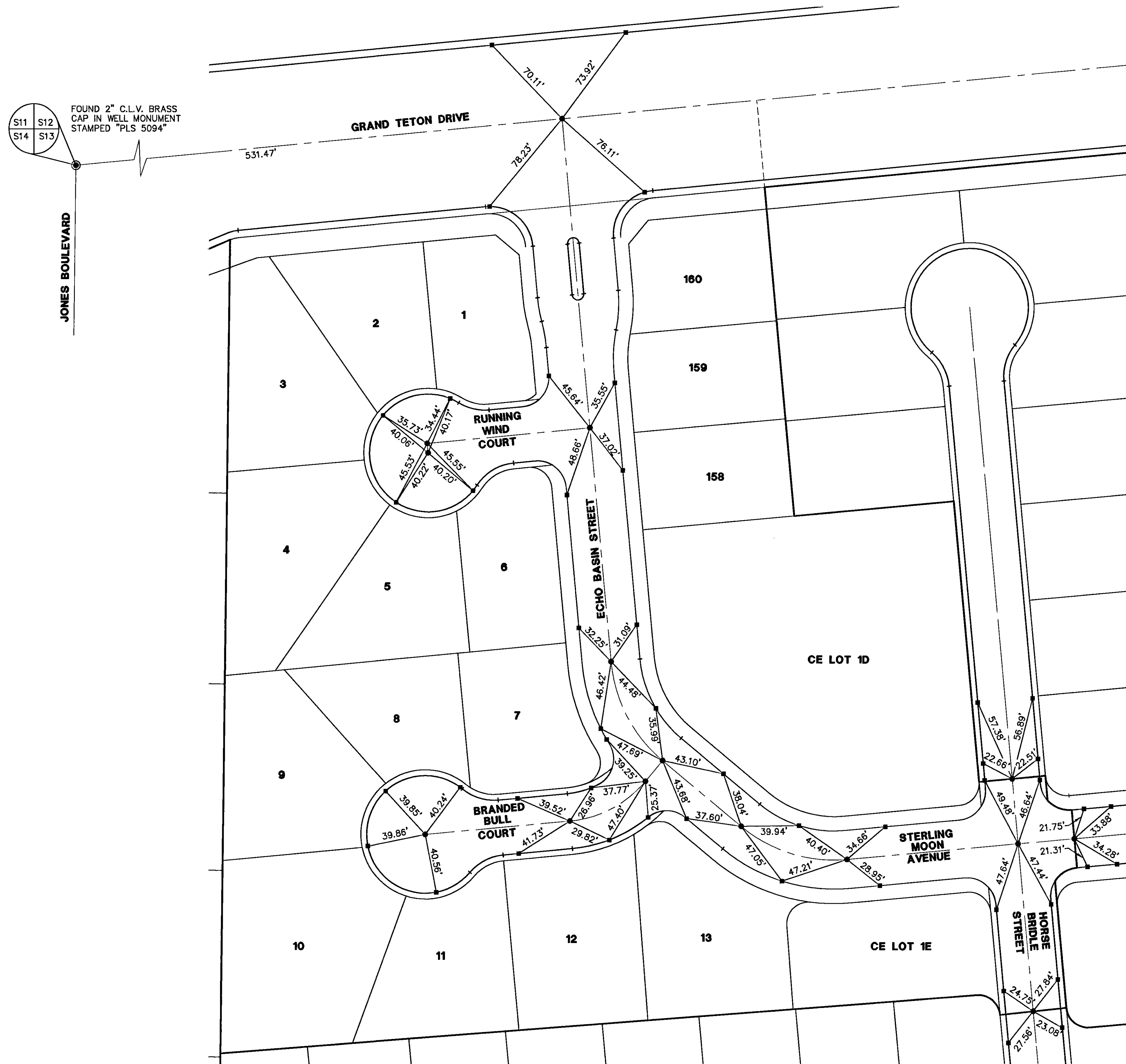


IRON MOUNTAIN RANCH - VILLAGE 1 - UNIT 1

MONUMENTATION TIE MAP

(BOOK 102, PAGE 0041)
 LOCATED WITHIN THE NORTHWEST QUARTER (NW 1/4) OF THE NORTHWEST QUARTER (NW 1/4) OF
 SECTION 13, TOWNSHIP 19 SOUTH, RANGE 60 EAST, M.D.M., CITY OF LAS VEGAS, CLARK COUNTY, NEVADA.

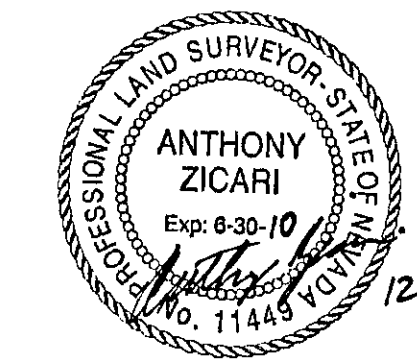


FOUND 2" C.L.V. BRASS
 CAP IN WELL MONUMENT
 STAMPED "PLS 5094"

JONES BOULEVARD

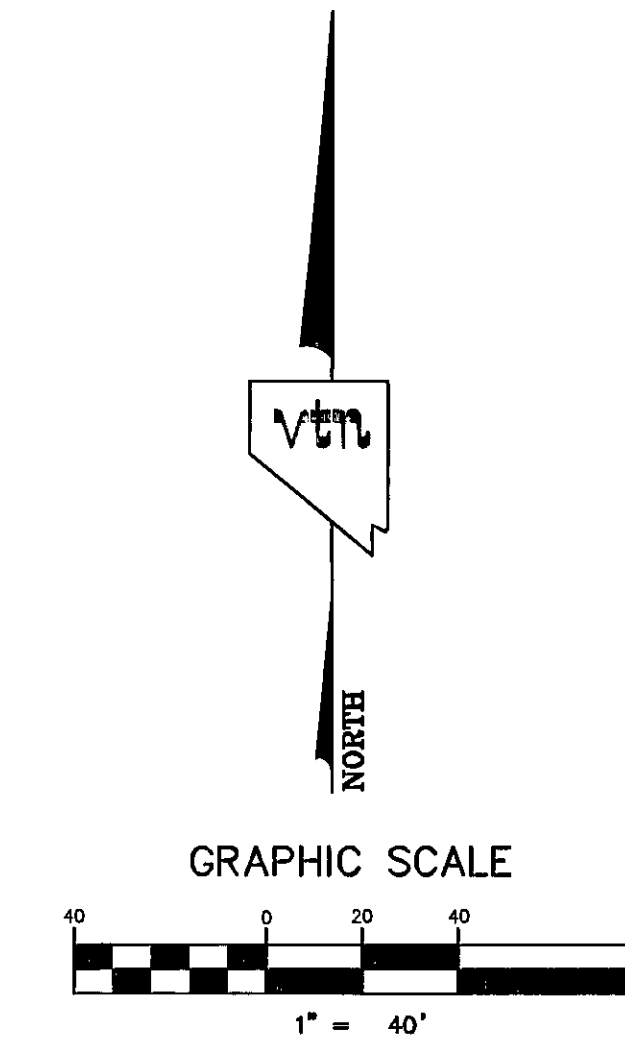
SURVEYOR'S NOTE:

I, ANTHONY ZICARI, A PROFESSIONAL LAND SURVEYOR LICENSED IN THE STATE OF NEVADA, DO HEREBY CERTIFY THAT THE MONUMENTS HAVE BEEN SET AND THE TIE DISTANCES ESTABLISHED AS SHOWN HEREON. THIS SURVEY WAS COMPLETED ON DECEMBER 15, 2008.



12/17/08

ANTHONY ZICARI, P.L.S.
 NEVADA LICENSE NO. 11449



NOTES

SEE FINAL MAP FOR BEARING AND DISTANCES.
 (BOOK 102, PAGE 0041)

LEGEND

- 2** LOT NUMBER
- LOT LINES
- UNIT BOUNDARY
- STREET CENTERLINE
- BACK OF CURB LINE
- TYPE III MONUMENT - 5/8" REBAR AND AL. CAP STAMPED "VTN PLS 11449" WITH REFERENCE MONUMENTS IN TOP OF CURB
- TYPE IV-A REFERENCE MONUMENTS STAMPED "VTN PLS 11449" IN TOP OF CURB
- ⊙ FOUND AS DESCRIBED

16671

vtm CONSULTING ENGINEERS • PLANNERS • LAND SURVEYORS
 2727 SOUTH RAINBOW BOULEVARD
 LAS VEGAS, NEVADA 89102-5148
 (702) 873-7550 FAX (702) 362-2597

MONUMENTATION TIE MAP

FOR
 IRON MOUNTAIN RANCH - VILLAGE 1 UNIT 1
 (BOOK 102, PAGE 0041)
 LOCATED WITHIN THE NORTHWEST QUARTER (NW 1/4) OF THE NORTHWEST QUARTER
 (NW 1/4) OF SECTION 13, TOWNSHIP 19 SOUTH, RANGE 60 EAST, M.D.M.,
 CITY OF LAS VEGAS, CLARK COUNTY, NEVADA.

SCALE: 1" = 40'	W.O.# 5825-1-A	DATE: 12/16/08	SHEET	OF
FILE: 5825-MTM-01	DRN. BY: SP	REV.:	1	1
	CKD. BY: TZ			