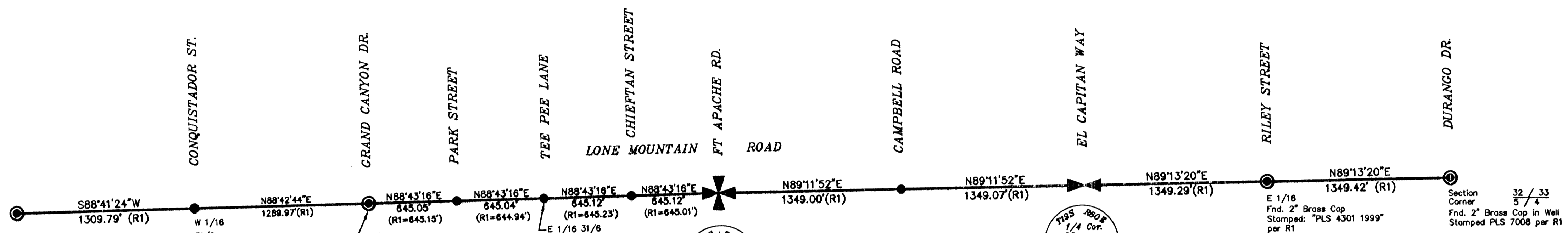
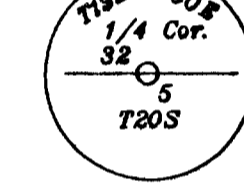
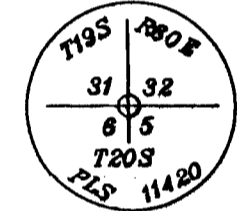


Section Corner 36 / 31
1 / 8
Fnd. Type 1 Mon.
Stamped PLS 9389 per R1

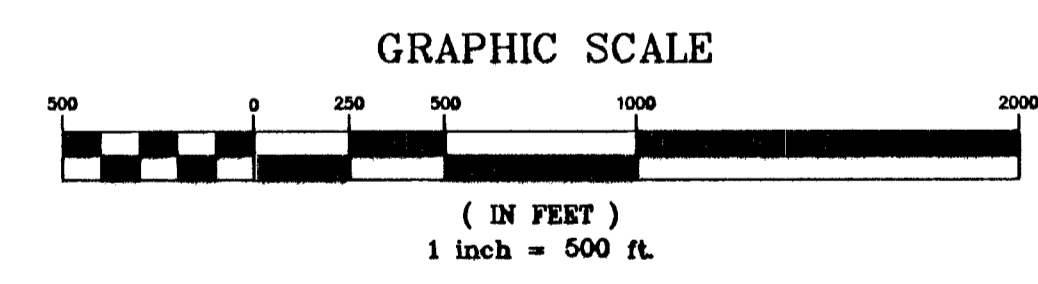


1/4 Corner 31/6
Fnd. Brass Cap in Well
No I.D.



E 1/16
Fnd. 2" Brass Cap
Stamped: "PLS 4301 1999"
per R1

Section Corner 32 / 33
5 / 4
Fnd. 2" Brass Cap in Well
Stamped PLS 7008 per R1



SURVEYOR'S CERTIFICATE

I, STEVEN N. BELL, A PROFESSIONAL LAND SURVEYOR LICENSED IN THE STATE OF NEVADA CERTIFY THAT:

1. THIS PLAT REPRESENTS THE RESULTS OF A SURVEY CONDUCTED UNDER MY DIRECT SUPERVISION AT THE INSTANCE OF FRETNER CONSTRUCTION.
2. THE LANDS SURVEYED LIE WITHIN A PORTION OF SECTIONS 31 AND 32, T. 19 S., R. 60 E., AND SECTIONS 5 AND 6, T. 20 S., R. 60 E., M.D.M. AND THE SURVEY WAS COMPLETED ON AUGUST 23, 2008.
3. THIS PLAT COMPLIES WITH THE APPLICABLE STATE STATUTES AND ANY LOCAL ORDINANCES IN EFFECT.
4. THE MONUMENTS DEPICTED ON THE PLAT ARE OF THE CHARACTER SHOWN, OCCUPY THE POSITIONS INDICATED AND ARE OF SUFFICIENT NUMBER AND DURABILITY.

Steven N. Bell
Steven N. Bell
STEVEN N. BELL, P.L.S. 11420
EXPIRES: 12/31/08



NOTE

THIS SURVEY WAS PERFORMED TO SHOW MONUMENTS FOUND AND RESET AFTER CONSTRUCTION OF THE GOWAN NORTH CHANNEL PHASE IV.

REFERENCE

(R1) = RECORD OF SURVEY FOR THE CITY OF LAS VEGAS BY G.C. WALLACE INC., RECORDED AS FILE 146 PAGE 0061 OF SURVEYS, DATED MARCH 3, 2005, IN THE OFFICE OF THE CLARK COUNTY, NEVADA RECORDER.

BASIS OF BEARINGS

THE BASIS OF BEARINGS ON THIS SURVEY IS NORTH 89°13'20" EAST ON THE NORTH LINE OF THE NE NE SECTION 5, T20S R60E MDM, AS SHOWN, PER R1.

RECORDER'S NOTE

ANY SUBSEQUENT CHANGES TO THIS MAP SHOULD BE EXAMINED AND MAY BE DETERMINED BY REFERENCE TO THE COUNTY RECORDERS CUMULATIVE MAP INDEX, NRS 278.5695

LEGEND

- FOUND MONUMENT PER R1, AS NOTED.
- ⊕ SECTION CORNER OR 1/4 CORNER, SET TYPE 1 MONUMENT STAMPED AS SHOWN
- SET BRASS CAP IN CONCRETE IN PAVEMENT STAMPED PLS 11420.

Hansen 7919

INSTRUMENT NO. _____ OFFICIAL RECORDS BOOK NO. _____ FILED FOR RECORD AT THE REQUEST GA ENGINEERING DATE _____, AT _____ FILE _____ PAGE _____ OF SURVEYS CLARK COUNTY, NEVADA RECORDS FRANCES DEANE, RECORDER FEE: _____ DEPUTY	RECORD OF SURVEY FOR CITY OF LAS VEGAS GOWAN NORTH CHANNEL PHASE IV	
	A PORTION OF SECTIONS 31 AND 32, T. 19 S., R. 60 E., AND SECTIONS 5 AND 6, T. 20 S., R. 60 E., M.D.M. CLARK COUNTY NEVADA	
	G A Engineering & Planning 1410 Greg Street, Suite 403 Sparks, Nevada 89431 (775) 324-2663	

sh 1
of 1