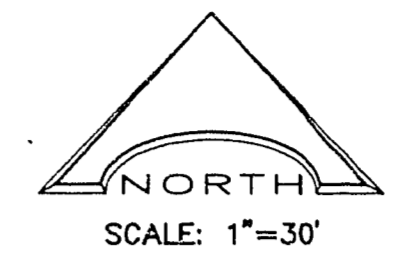


201019

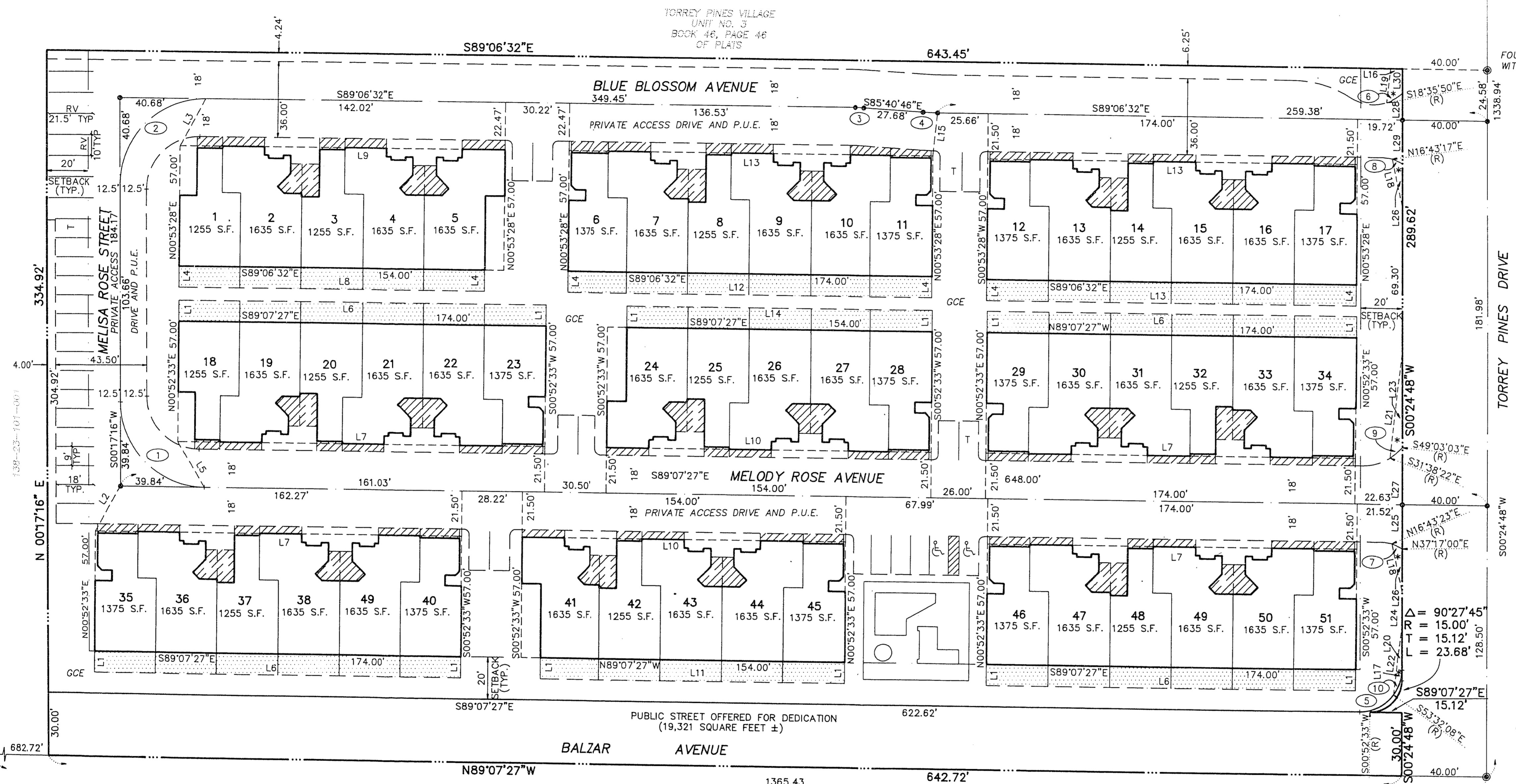
20-17-96

CCP 2

FINAL MAP
OF
ROSEWOOD TERRACE TOWNHOMES
A COMMON INTEREST PLANNED UNIT COMMUNITY
A PORTION OF THE SOUTHEAST QUARTER (SE 1/4) OF THE NORTHEAST QUARTER (NE 1/4)
OF SECTION 23, TOWNSHIP 20 SOUTH, RANGE 60 EAST, M.D.M., CLARK COUNTY, NEVADA



1/4 CORNER 14/23
FOUND ALUMINUM CAP
G.C. WALLACE



NW 1/16
CORNER S. 23
FOUND P.K. NAIL

N 1/16
CORNER S. 23
FOUND ALUMINUM CAP
RLS 4134

LEGEND

- MONUMENT FOUND AS INDICATED
- SET TYPE III MONUMENT - PLS 10160
- GCE GENERAL COMMON ELEMENT
- LIMITED COMMON ELEMENT
- EXCLUSIVE USE AREA
- PROPERTY LINE
- CENTER LINE
- SETBACK LINE
- ① CURVE LABEL
- 19 LOT NUMBER
- T TRASH ENCLOSURE
- ♿ HANDICAP PARKING SPACE
- 5 X 19 HANDICAP ACCESS ISLE
- * VIEW OBSTRUCTION EASEMENT
NO IMPROVEMENTS OR LANDSCAPING
MORE THAN 30" HIGH

TOTAL NUMBER OF UNITS = 54

LINE	BEARING	DISTANCE
L1	S00°52'33"W	10.00'
L2	N 28°29'07" E	24.48'
L3	S28°57'29" W	25.47'
L4	S00°53'28" W	10.00'
L5	S 30°12'58" E	25.11'
L6	S89°07'27" E	174.00'
L7	N89°07'27" W	174.00'
L8	N89°06'32" W	145.00'
L9	S89°06'32" E	154.00'
L10	N89°07'27" W	154.00'
L11	N89°07'27" W	145.00'
L12	S89°06'32" E	174.00'
L13	N89°06'32" W	174.00'
L14	S89°07'27" E	145.00'
L15	S06°49'50" W	20.57'

LINE	BEARING	DISTANCE
L16	S89°06'32" E	5.46'
L17	N00°24'48" E	5.04'
L18	S11°29'51" E	23.20'
L19	N07°01'09" E	16.20'
L20	N00°24'48" E	21.30'
L21	N07°01'09" E	49.83'
L22	N07°01'09" E	33.29'
L23	N00°24'48" E	44.56'
L24	N00°24'48" E	15.81'
L25	N 00°24'48" E	20.93'
L26	N00°24'48" E	20.30'
L27	S 00°24'48" W	26.91'
L28	S00°24'48" W	12.68'
L29	N00°24'48" E	20.93'
L30	N00°24'48" E	11.57'

CURVE	DELTA	RADIUS	LENGTH	TANGENT
1	89°24'43"	40.25'	62.81'	39.84'
2	90°36'12"	40.25'	63.65'	40.68'
3	03°25'46"	82.00'	4.91'	2.45'
4	03°25'46"	118.00'	7.06'	3.53'
5	54°24'41"	20.00'	18.99'	10.28'
6	24°46'51"	20.00'	8.65'	4.39'
7	20°33'36"	15.00'	5.38'	2.72'
8	20°33'43"	15.00'	5.38'	2.72'
9	17°24'41"	25.00'	7.60'	3.83'
10	36°03'04"	20.00'	12.58'	6.51'

NOTE: ALL ONSITE SEWERS ARE
PRIVATELY OWNED AND
MAINTAINED

SHEET 3 OF 3
JOB NO. 108-007-242

L.R. NELSON CONSULTANTS
STRUCTURAL
CIVIL
SURVEY

Book 10-4368 31