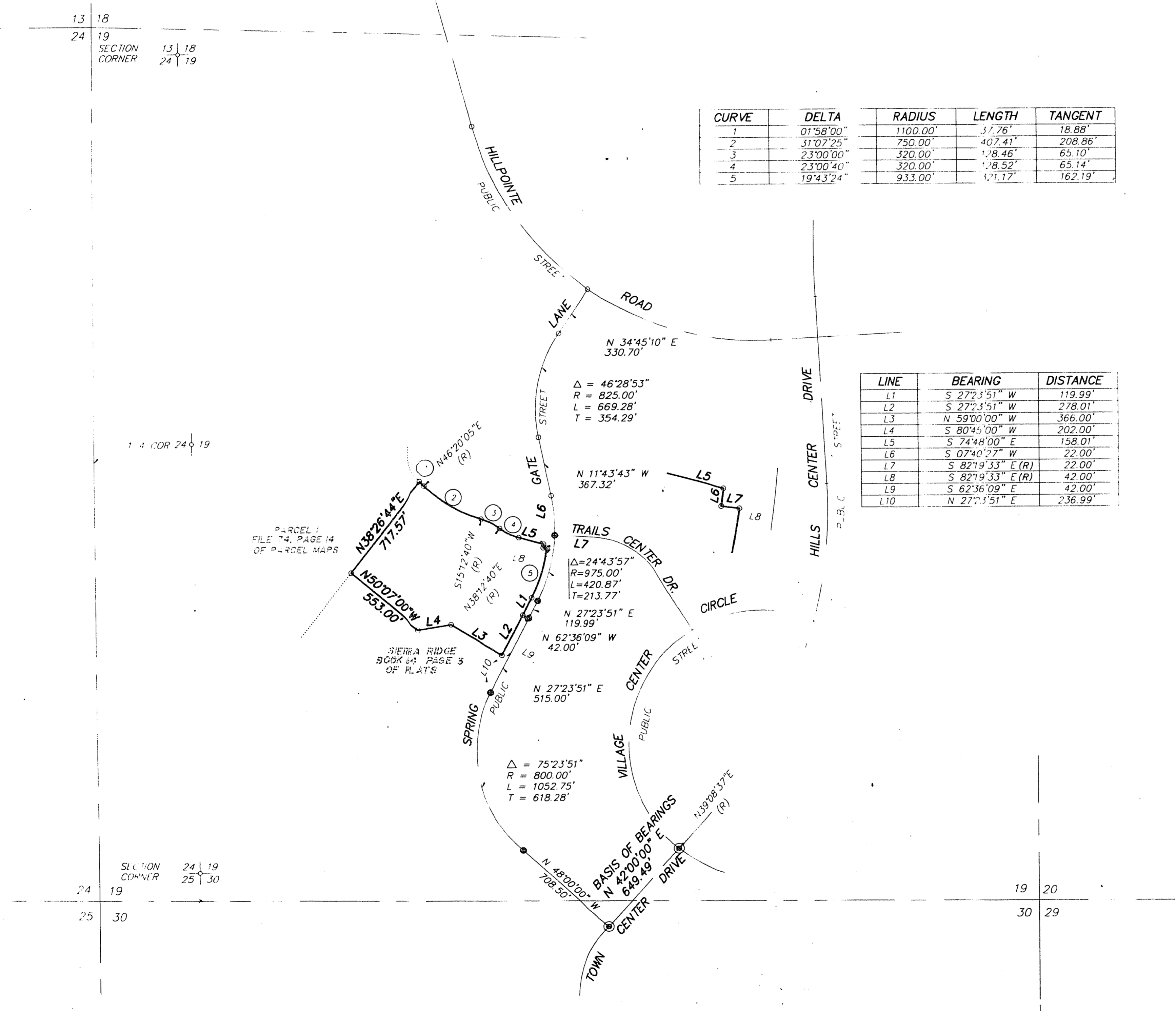


20-17-160

FINAL MAP OF LAPAZ

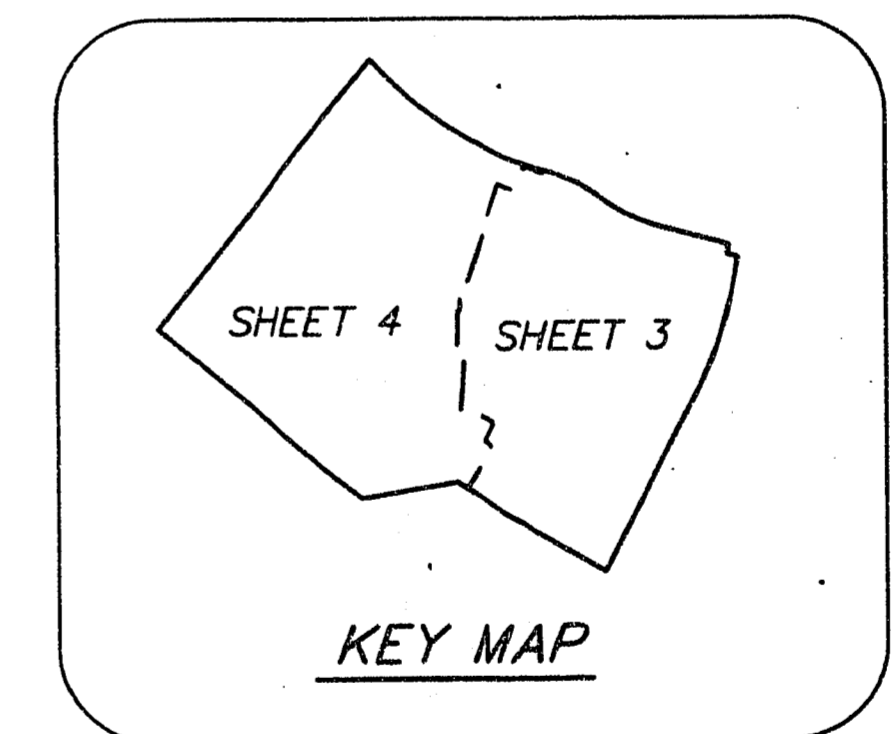
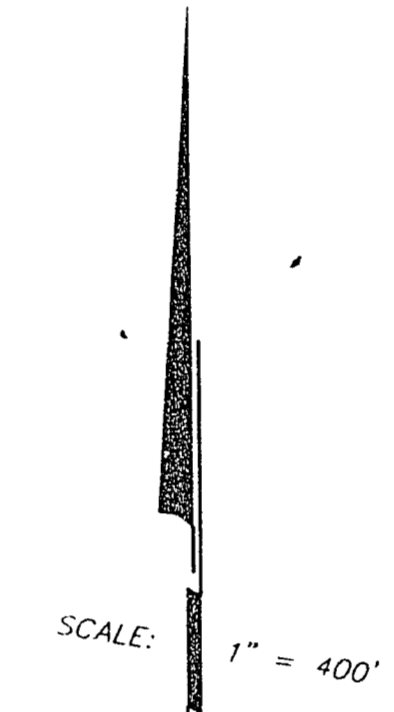
A PLANNED COMMUNITY AND COMMON INTEREST COMMUNITY

BEING A SUBDIVISION OF ALL OF LOT 11 OF "SUMMERLIN VILLAGE 7-THE TRAILS-UNIT NO. 1" AS SHOWN BY MAP THEREOF ON FILE IN BOOK 59, PAGE 11 OF PLATS IN THE CLARK COUNTY RECORDER'S OFFICE, CLARK COUNTY, NEVADA, LYING WITHIN SECTION 19, TOWNSHIP 20 SOUTH, RANGE 60 EAST, M.D.M., CITY OF LAS VEGAS, CLARK COUNTY, NEVADA



CURVE	DELTA	RADIUS	LENGTH	TANGENT
1	01°58'00"	1100.00'	37.76'	18.88'
2	31°07'25"	750.00'	407.41'	208.86'
3	23°00'00"	320.00'	178.46'	65.10'
4	23°00'40"	320.00'	178.52'	65.14'
5	19°43'24"	933.00'	471.17'	162.19'

LINE	BEARING	DISTANCE
L1	S 27°15'51" W	119.99'
L2	S 27°15'51" W	278.01'
L3	N 59°00'00" W	366.00'
L4	S 80°45'00" W	202.00'
L5	S 74°48'00" E	158.01'
L6	S 07°40'27" W	22.00'
L7	S 82°19'33" E (R)	22.00'
L8	S 82°19'33" E (R)	42.00'
L9	S 62°36'09" E	42.00'
L10	N 27°15'51" E	236.99'



- LEGEND**
- FOUND MONUMENTATION - ALCAP STAMPED PLS 7755
 - SET MONUMENTATION PER N.R.S. 278.371
 - SET 5/8" REBAR AND ALUMINUM CAP STAMPED P.L.S. 7755 W/ REFERENCE TIES IN TOP OF CURB (UNLESS OTHERWISE NOTED)
 - SUBDIVISION BOUNDARY LINE
 - STREET CENTERLINE
 - ① CURVE NUMBER
 - L1 LINE SEGMENT NUMBER

LAP-FN-B.DWG
780.000C