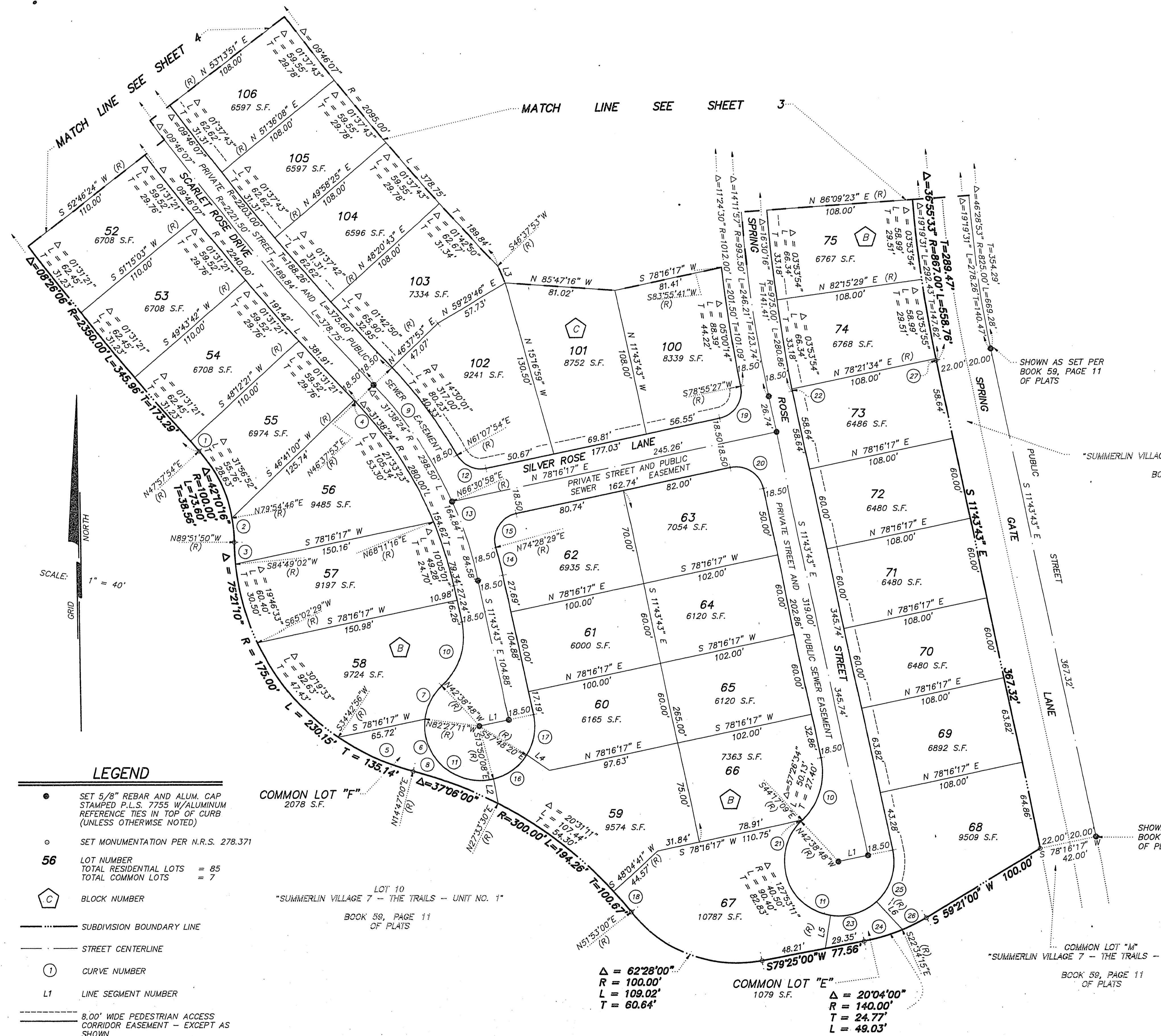


20-17-152

FINAL MAP OF COUNTRY ROSE ESTATES AT THE TRAILS - UNIT 1

A PLANNED COMMUNITY AND COMMON INTEREST COMMUNITY

BEING A SUBDIVISION OF ALL OF LOT 9 OF "SUMMERLIN VILLAGE 7 - THE TRAILS - UNIT NO. 1" AS SHOWN BY MAP THEREOF ON FILE IN BOOK 59, PAGE 11 OF PLATS IN THE CLARK COUNTY RECORDER'S OFFICE, CLARK COUNTY, NEVADA, LYING WITHIN SECTION 19, TOWNSHIP 20 SOUTH, RANGE 60 EAST, M.D.M., CITY OF LAS VEGAS, CLARK COUNTY, NEVADA



CURVE	DELTA	RADIUS	LENGTH	TANGENT
1	00°14'27"	2350.00'	9.88'	4.94'
2	10°13'24"	100.00'	17.84'	8.95'
3	05°19'08"	175.00'	16.25'	8.13'
4	00°03'07"	2240.00'	2.03'	1.02'
5	19°55'56"	175.00'	60.88'	30.75'
6	11°22'56"	40.50'	78.73'	59.35'
7	39°48'23"	40.50'	28.14'	14.66'
8	12°46'30"	300.00'	66.89'	33.58'
9	19°53'05"	298.50'	103.60'	52.32'
10	59°04'55"	50.00'	51.56'	28.34'
11	239°04'55"	40.50'	169.00'	---
12	72°51'37"	20.00'	25.43'	14.76'
13	11°45'19"	298.50'	61.24'	30.73'
14	03°47'48"	317.00'	21.01'	10.51'
15	93°47'48"	20.00'	32.74'	21.37'
16	43°58'12"	40.50'	31.08'	16.35'
17	43°55'23"	40.50'	31.05'	16.33'
18	03°48'19"	300.00'	19.92'	9.97'
19	89°20'50"	20.00'	31.19'	19.77'
20	90°00'00"	20.00'	31.42'	20.00'
21	01°38'21"	50.00'	1.43'	0.72'
22	00°05'17"	975.00'	1.50'	0.75'
23	51°43'39"	40.50'	36.56'	19.63'
24	11°59'15"	140.00'	29.29'	14.70'
25	59°28'06"	40.50'	42.04'	23.13'
26	08°04'46"	140.00'	19.74'	9.89'
27	00°05'17"	867.00'	1.33'	0.67'

LINE	BEARING	DISTANCE
L1	S 78°16'17" W	22.00'
L2	N 09°35'25" W	18.44'
L3	S 23°29'50" E	13.67'
L4	N 54°41'55" W	20.10'
L5	N 09°28'01" E	24.88'
L6	N 42°15'38" W	28.08'

- LEGEND**
- SET 5/8" REBAR AND ALUM. CAP STAMPED P.L.S. 7755 W/ALUMINUM REFERENCE TIES IN TOP OF CURB (UNLESS OTHERWISE NOTED)
 - SET MONUMENTATION PER N.R.S. 278.371
 - 56 LOT NUMBER
TOTAL RESIDENTIAL LOTS = 85
TOTAL COMMON LOTS = 7
 - ⬡ BLOCK NUMBER
 - SUBDIVISION BOUNDARY LINE
 - STREET CENTERLINE
 - ① CURVE NUMBER
 - L1 LINE SEGMENT NUMBER
 - 8.00' WIDE PEDESTRIAN ACCESS CORRIDOR EASEMENT - EXCEPT AS SHOWN

NOTE:

FOR SIDE PROPERTY LINES SET CONCRETE NAIL AND BRASS TAG STAMPED PLS 7755 IN THE REAR WALL ON THE PROPERTY LINE PROJECTED. SET SAWCUT IN THE BACK OF CURB AT THE FRONT OF THE LOT ON THE PROPERTY LINE PROJECTED. SET 2"x2" HUB AND TACK AT LOT CORNERS WHERE THERE IS NO BLOCK WALL.

SHOWN AS SET PER BOOK 59, PAGE 11 OF PLATS

DIRECT VEHICULAR ACCESS TO SPRING GATE LANE ACROSS COMMON LOT L FROM ABUTTING LOTS IS PROHIBITED