

930528

01254

15-11-13

FINAL MAP OF

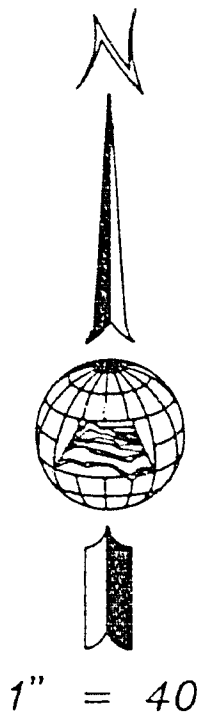
TAMARISK - PHASE 1

A PORTION OF LOT 3 AS SHOWN ON THE MAP ON FILE IN BOOK 50 OF PLATS, PAGE 19
OFFICIAL RECORDS, CLARK COUNTY, NEVADA

LYING WITHIN THE SOUTH HALF (S 1/2) OF SECTION 21, TOWNSHIP 20 SOUTH,
RANGE 60 EAST, M.D.M., CITY OF LAS VEGAS, CLARK COUNTY, NEVADA

NOTES

- ACREAGE: 6.46 ACRES ±
- TOTAL LOTS: 39
- BUILDING SETBACKS
 - GARAGE - 18' W/O SIDEWALK
 - 22' WITH SIDEWALK
 - HOUSE - 14' W/O SIDEWALK
 - 18' WITH SIDEWALK
 - 15' SIDE ON CORNER
 - 5' SIDE
 - 15' REAR
- REFERENCES
 - PLAT - B. 50, PG. 19
 - PM - F. PG. ---



NOTES:

PURSUANT TO N.R.S. 278.371, ALL REAR CORNERS SHALL BE SET WITH A NAIL AND TAG P.L.S. 8431 ON BLOCK WALLS AND ALL FRONT OR SIDE CORNERS ADJOINING PUBLIC RIGHT OF WAY SHALL BE MARKED BY THE SAWCUTTING OF THE BACK OF CURBS ON THE PROLONGATION OF PROPERTY LINES.

DIRECT VEHICULAR ACCESS TO PUEBLO VISTA DRIVE THROUGH COMMON AREA FROM ABUTTING LOTS IS PROHIBITED.

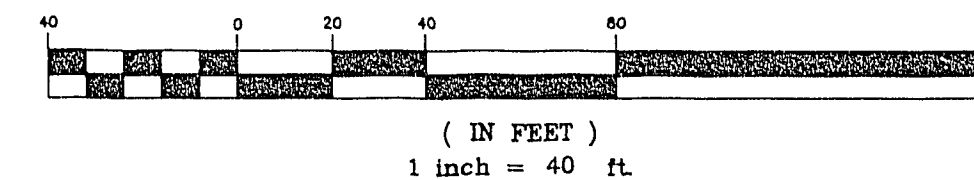
CURVE TABLE

No.	RADIUS	DELTA	LENGTH	TANGENT
C1	1074.00'	35°46'36"	670.63'	346.65'
C2	1074.00'	03°07'47"	58.66'	29.34'
C3	1074.00'	05°30'10"	103.15'	51.61'
C4	1074.00'	47°32'20"	891.11'	473.01'
C5	30.00'	62°54'22"	32.94'	16.35'
C6	30.00'	30°13'20"	48.78'	24.38'
C7	30.00'	83°07'47"	48.78'	24.38'
C8	1100.00'	01°33'47"	30.01'	15.01'
C9	1100.00'	38°34'55"	740.72'	365.02'
C10	1100.00'	08°37'57"	168.73'	84.36'
C11	1100.00'	48°46'39"	936.46'	468.22'
C12	1058.00'	41°23'21"	764.28'	399.67'
C13	1058.00'	00°35'31"	10.93'	5.46'
C14	1058.00'	01°41'00"	31.08'	15.54'
C15	1058.00'	03°36'25"	66.61'	33.31'
C16	1058.00'	03°27'53"	63.98'	31.99'
C17	1058.00'	03°35'13"	66.23'	33.12'
C18	1058.00'	03°14'59"	63.01'	31.51'
C19	1058.00'	03°34'04"	66.66'	33.33'
C20	1058.00'	02°10'00"	40.00'	20.00'
C21	1058.00'	03°20'18"	61.64'	30.82'
C22	973.50'	00°29'58"	5.49'	2.74'
C23	25.00'	20°35'35"	4.39'	2.19'
C24	25.00'	66°25'19"	26.98'	13.49'
C25	6.00'	180°00'00"	18.56'	9.28'
C26	25.00'	87°00'53"	3.97'	1.98'
C27	20.00'	83°11'46"	29.04'	14.52'
C28	500.00'	06°37'52"	57.81'	28.91'
C29	500.00'	05°23'04"	46.99'	23.50'
C30	480.00'	12°00'55"	100.66'	50.33'
C31	751.50'	18°57'26"	246.65'	123.32'
C32	731.50'	12°48'15"	163.47'	81.74'
C33	460.00'	12°00'55"	96.47'	48.24'
C34	771.50'	04°36'56"	62.15'	31.08'
C35	771.50'	04°21'10"	58.81'	29.41'
C36	771.50'	01°17'01"	17.28'	8.64'
C37	50.00'	59°58'18"	52.34'	26.17'
C38	40.50'	35°19'19"	24.97'	12.49'
C39	40.50'	98°36'40"	69.70'	34.85'
C40	40.50'	99°53'08"	70.61'	35.31'
C41	40.50'	233°49'07"	165.28'	82.64'
C42	500.00'	12°00'55"	104.85'	52.42'
C43	460.00'	04°25'04"	35.47'	17.74'
C44	460.00'	07°35'51"	61.00'	30.50'
C45	731.50'	00°42'40"	9.08'	4.54'
C46	731.50'	05°11'23"	66.26'	33.13'
C47	731.50'	01°42'49"	21.88'	10.94'
C48	771.50'	18°57'26"	255.26'	127.63'
C49	933.50'	02°56'18"	47.87'	23.94'
C50	933.50'	03°57'31"	64.50'	32.25'
C51	973.50'	20°13'12"	343.55'	171.78'
C52	973.50'	03°27'53"	58.87'	29.44'
C53	973.50'	02°53'49"	49.22'	24.61'
C54	953.50'	23°12'19"	386.17'	193.09'
C55	953.50'	03°29'05"	57.99'	29.00'
C56	933.50'	26°41'24"	434.85'	217.42'
C57	1240.00'	02°43'30"	58.98'	29.49'
C58	1240.00'	02°39'02"	57.37'	28.69'
C59	1240.00'	05°22'33"	116.34'	58.17'
C60	50.00'	01°50'03"	1.60'	0.80'
C61	50.00'	23°01'20"	20.09'	10.05'
C62	50.00'	123°56'54"	108.17'	54.09'
C63	50.00'	23°50'56"	20.81'	10.41'
C64	50.00'	24°51'23"	21.69'	10.85'
C65	50.00'	36°17'34"	34.43'	17.22'
C66	50.00'	33°39'23"	29.37'	14.69'
C67	50.00'	23°22'57"	20.41'	10.21'
C68	50.00'	27°27'00"	23.95'	12.00'
C69	600.00'	11°35'52"	121.45'	60.73'
C70	1200.00'	02°46'24"	58.09'	29.05'
C71	1200.00'	02°40'28"	56.02'	28.01'
C72	560.00'	04°14'57"	41.53'	20.77'
C73	560.00'	06°57'15"	67.97'	34.00'
C74	560.00'	01°53'49"	16.54'	8.27'
C75	1220.00'	08°01'23"	170.83'	85.42'
C76	580.00'	17°05'48"	173.07'	86.54'
C77	600.00'	00°19'08"	3.34'	1.67'
C78	600.00'	05°44'21"	60.10'	30.05'
C79	600.00'	05°32'24"	58.01'	29.01'
C80	20.00'	97°31'46"	34.04'	17.02'
C81	1200.00'	05°26'53"	114.10'	57.05'
C82	35.00'	72°56'35"	44.56'	22.28'
C83	560.00'	13°06'01"	128.04'	64.02'

LINE TABLE

No.	BEARING	DISTANCE
L1	N82°00'33"W	16.00'
L2	S33°24'46"W	20.00'
L3	N85°29'38"W	20.00'
L4	S33°24'46"W	40.00'
L5	S80°45'22"E	20.50'
L6	S40°13'00"W	11.26'
L7	S56°35'14"E	13.11'
L8	N22°39'27"W	23.05'
L9	N20°13'21"W	22.00'
L10	S40°13'00"W	37.56'
L11	N32°44'34"E	13.61'
L12	N32°44'34"E	20.45'
L13	N26°16'43"E	0.84'
L14	N22°19'12"E	10.63'
L15	N18°21'41"E	16.50'
L16	N14°24'10"E	22.37'
L17	N00°38'30"W	15.30'
L18	S56°35'14"E	43.18'
L19	S56°35'14"E	16.46'
L20	S41°42'26"E	16.46'
L21	S25°23'23"W	---

GRAPHIC SCALE



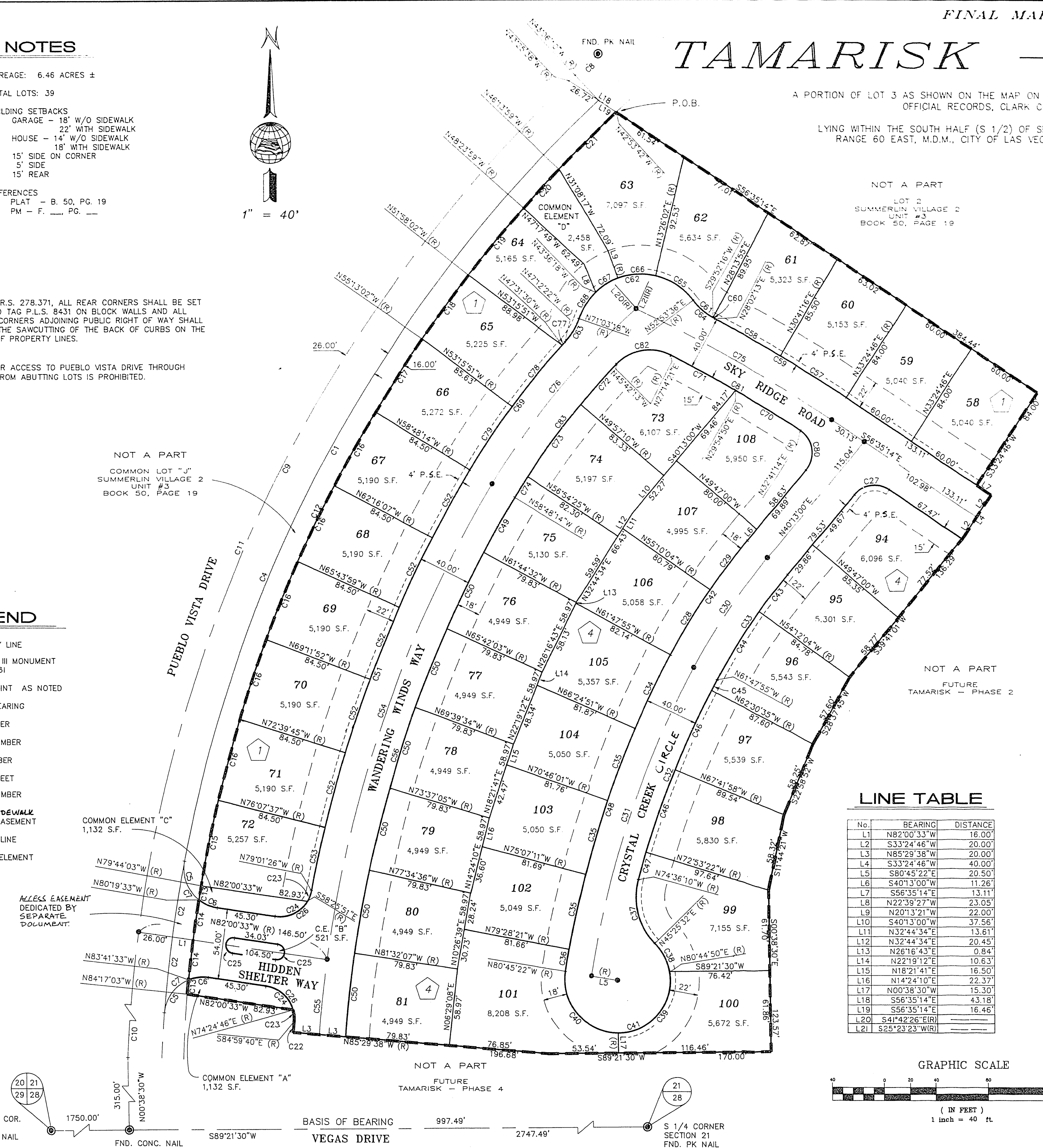
SHEET 2 of 2

Church Engineering of Nevada, Inc.
 Consulting Engineers 6600 W. Charleston Blvd.
 Suite 140
 Las Vegas, Nv. 89102
 Surveyors (702) 878-8244

BOOK 56 PAGE 100 4263-1

LEGEND

- BOUNDARY LINE
- SET TYPE III MONUMENT PLS # 8431
- FOUND POINT AS NOTED
- (R) RADIAL BEARING
- 21 LOT NUMBER
- C1 CURVE NUMBER
- L1 LINE NUMBER
- SF SQUARE FEET
- 4 BLOCK NUMBER
- P.S.E. PUBLIC SIDEWALK EASEMENT
- SETBACK LINE
- C.E. COMMON ELEMENT



SW SECTION COR. SECTION 21 FND. CONC. NAIL 1750.00' 315.00' N00°38'30"W

FND. CONC. NAIL S89°21'30"W 997.49' BASIS OF BEARING

VEGAS DRIVE 2747.49'

S 1/4 CORNER SECTION 21 FND. PK NAIL