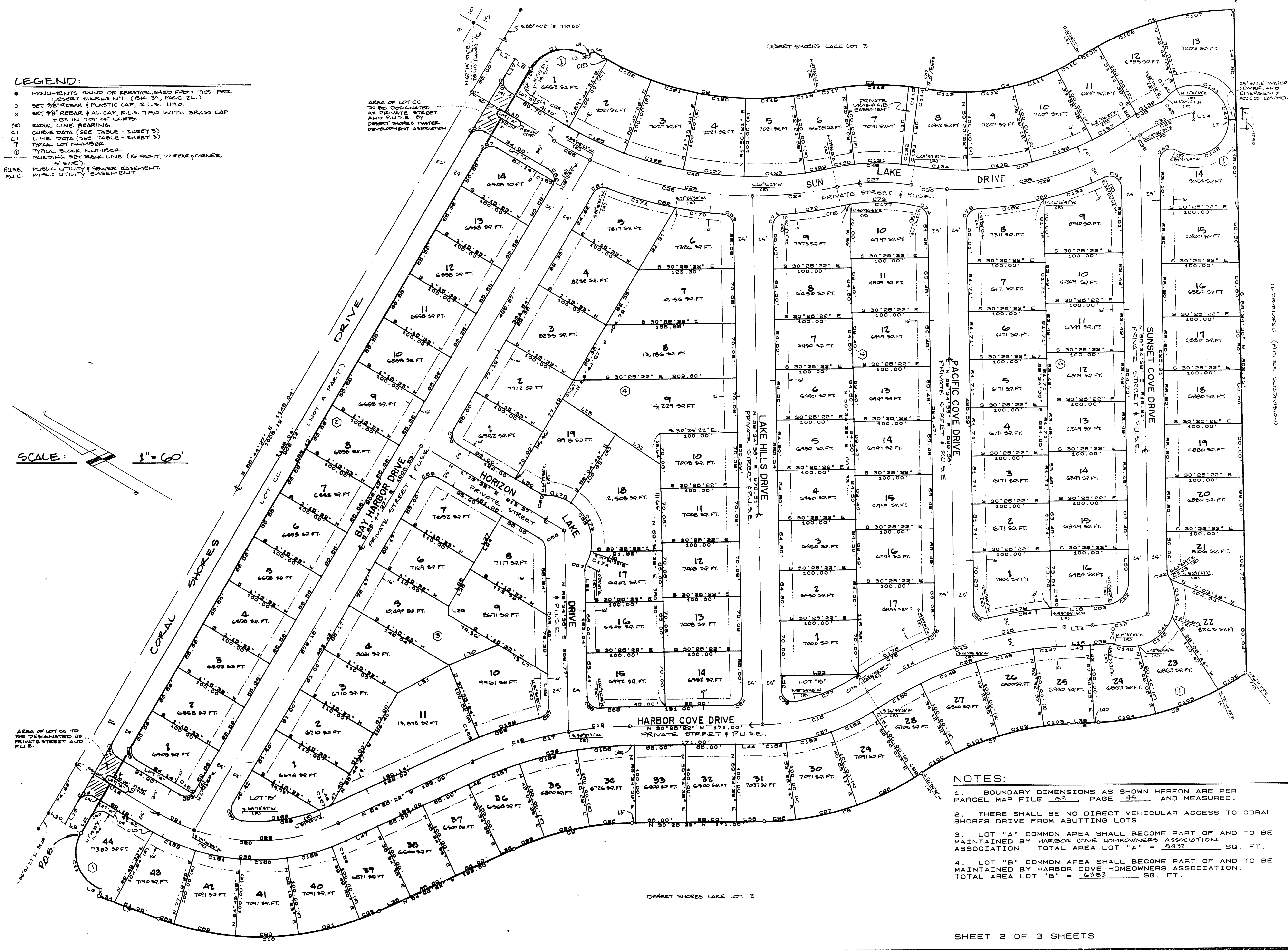


# HARBOR COVE

A DIVISION OF PARCEL 1 OF PARCEL MAP FILE 59, PAGE 45, BEING A PART OF DESERT SHORES No. 1, LYING IN THE N. 1/2 OF SECTION 16, T. 20 S., R. 60 E., M.D.B. & M., CITY OF LAS VEGAS, STATE OF NEVADA

- LEGEND:**
- MONUMENTS FOUND OR REESTABLISHED FROM THIS PIER
  - DESERT SHORES N11 (B.C. 3A, PAGE 2C)
  - SET 3/8" REBAR & PLASTIC CAP, R.L.S. T190
  - SET 3/8" REBAR & PLASTIC CAP, R.L.S. T190 WITH BRASS CAP TIES IN TOP OF CURBS
  - (R) RADIAL LINE BEARING
  - (C) CURVE DATA (SEE TABLE - SHEET 3)
  - (L) LINE DATA (SEE TABLE - SHEET 3)
  - (7) TYPICAL LOT NUMBER
  - (1) TYPICAL BOOK NUMBER
  - BUILDING SET BACK LINE (10' FRONT, 10' REAR & CORNER, 5' SIDE)
  - P.U.S. PUBLIC UTILITY & SEWER EASEMENT
  - P.U.E. PUBLIC UTILITY EASEMENT

SCALE: 1" = 60'



- NOTES:**
1. BOUNDARY DIMENSIONS AS SHOWN HEREON ARE PER PARCEL MAP FILE 59, PAGE 45 AND MEASURED.
  2. THERE SHALL BE NO DIRECT VEHICULAR ACCESS TO CORAL SHORES DRIVE FROM ABUTTING LOTS.
  3. LOT "A" COMMON AREA SHALL BECOME PART OF AND TO BE MAINTAINED BY HARBOR COVE HOMEOWNERS ASSOCIATION. ASSOCIATION. TOTAL AREA LOT "A" = 2437 SQ. FT.
  4. LOT "B" COMMON AREA SHALL BECOME PART OF AND TO BE MAINTAINED BY HARBOR COVE HOMEOWNERS ASSOCIATION. TOTAL AREA LOT "B" = 2383 SQ. FT.