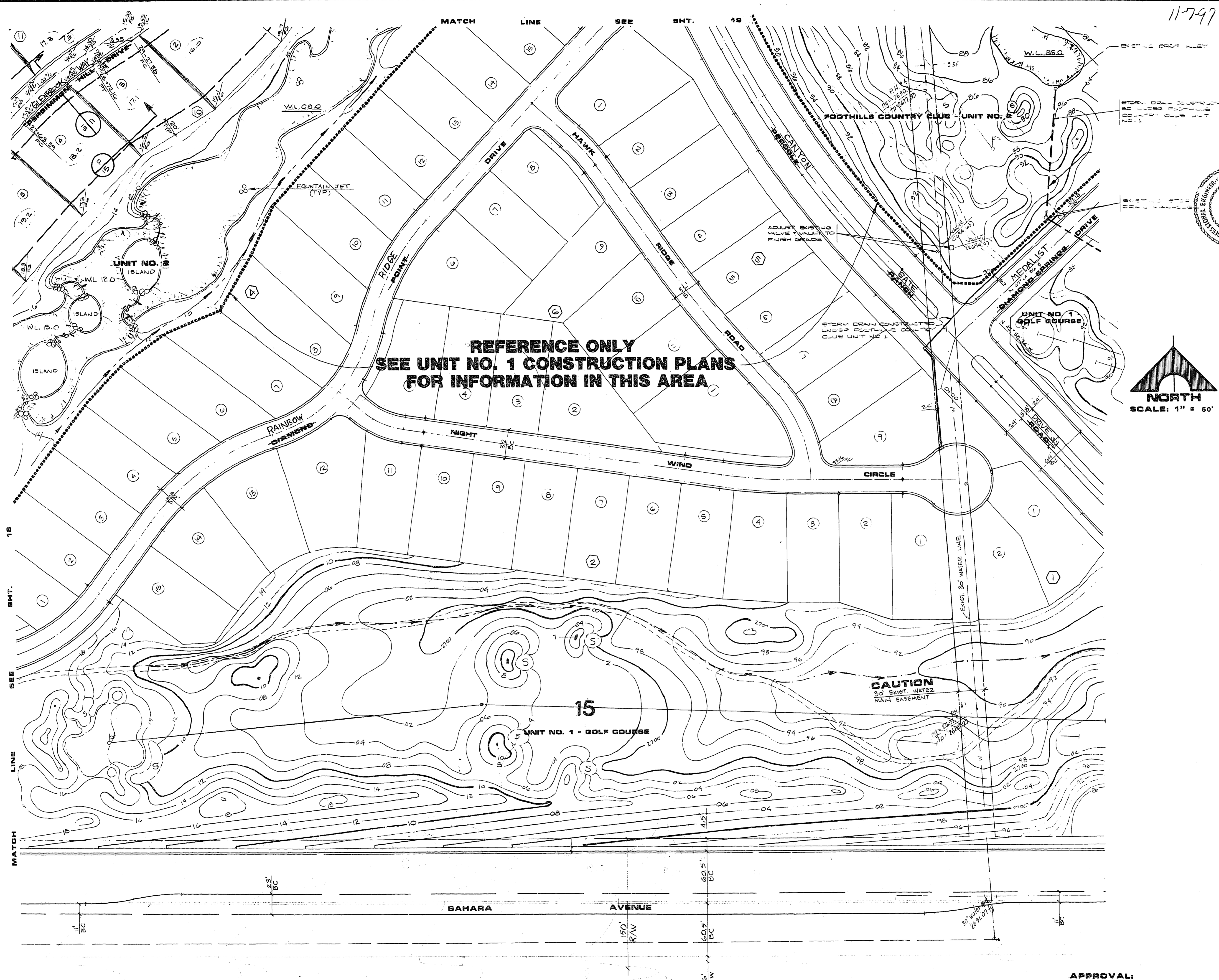
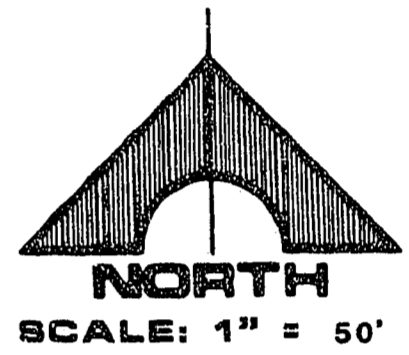


11-7-97



**REFERENCE ONLY
SEE UNIT NO. 1 CONSTRUCTION PLANS
FOR INFORMATION IN THIS AREA**



CAUTION
30' EXIST. WATER
MAIN EASEMENT

NO.	DATE	DESCRIPTION
1	11-7-97	PRELIMINARY GRADING PLAN
2	11-7-97	FINAL GRADING PLAN

JOB NO.	DATE	DRAWN	CHECK

G.C. WALLACE, INC.
Engineering/Architecture

**FOOTHILLS COUNTRY CLUB UNIT NO. 2
AT PECCOLE RANCH
GRADING PLAN UNIT NO. 2**

APPROVAL:
[Signature]
12-8-97
DATE

SHEET 17
OF SHEETS

JOB NO. 543-324

1074-1407-2