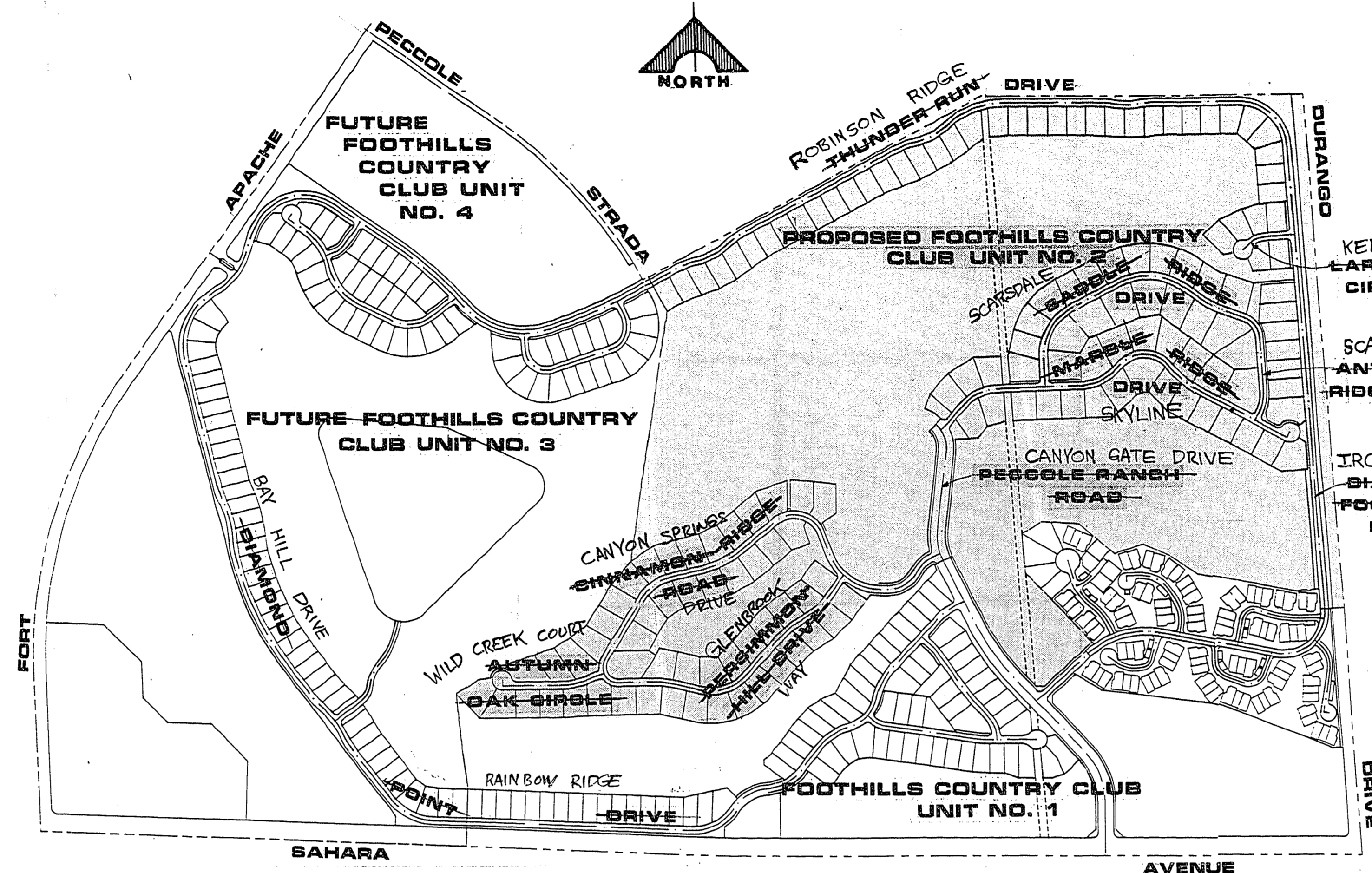


**GENERAL NOTES**

- CONTRACTOR SHALL PROVIDE ALL NECESSARY HORIZONTAL AND VERTICAL TRANSITION BETWEEN NEW CONSTRUCTION AND EXISTING SURFACES TO PROVIDE FOR PROPER DRAINAGE AND OF INGRESS AND EGRESS TO SAID CONSTRUCTION. EXTENT OF TRANSITIONS TO BE DETERMINED BY THE CITY ENGINEER.
- EXISTING UTILITIES ARE LOCATED ON PLANS FOR THE CONVENIENCE OF THE CONTRACTOR ONLY. THE CONTRACTOR SHALL BEAR FULL RESPONSIBILITY FOR THE PROTECTION OF THE UTILITIES AND THE ENGINEER BEARS NO RESPONSIBILITY FOR UTILITIES NOT SHOWN ON PLANS OR NOT IN THE LOCATION SHOWN ON THE PLANS (CALL BEFORE YOU DIG-800-227-2600)
- CONSTRUCTION TO BE PER "UNIFORM STANDARD SPECIFICATIONS AND DRAWINGS"; THE CITY OF LAS VEGAS, NEVADA. (LATEST EDITION)
- CONSTRUCTION SURVEY:**  
GRADES ARE GIVEN FROM TOP OF STAKES OR NAILS. THE CONTRACTORS ARE CAUTIONED TO OBSERVE THE FOLLOWING RULES IN USING THE GRADE STAKES GIVEN BY THIS OFFICE. THREE (3) CONSECUTIVE POINTS THAT ARE SHOWN TO BE ON THE SAME RATE OF SLOPE MUST BE USED IN COMMON IN ORDER THAT ANY VARIATION OUT OF A PERFECT STRAIGHT GRADE MAY BE DETECTED IN CASE ANY SUCH DISCREPANCY IS FOUND, THE SAME MUST BE REPORTED, OTHERWISE THIS OFFICE WILL NOT BE RESPONSIBLE FOR ANY ERROR IN THE GRADE OF THE FINISHED WORK.
- WHEEL CHAIR RAMPS SHALL BE CONSTRUCTED AT ALL STREET INTERSECTIONS PER STANDARD DRAWING D22A. EXACT LOCATION OF RAMPS TO BE DETERMINED IN THE FIELD BY A CITY OF LAS VEGAS INSPECTOR.
- STANDARD STREET SECTIONS PER STANDARD DRAWINGS UNLESS OTHERWISE NOTED.
- CURB AND GUTTER WITH A GRADE OF LESS THAN FOUR TENTHS OF ONE PERCENT SHALL BE CONSTRUCTED BY FORMING. EACH JOINT SHALL BE CHECKED FOR GRADE PRIOR TO CONSTRUCTION AND WATER TESTED AS SOON AS POSSIBLE AFTER CONSTRUCTION.
- EXACT LOCATIONS OF ALL SAWCUTS TO BE DETERMINED BY A CITY OF LAS VEGAS INSPECTOR IN THE FIELD.
- USE TYPE "V" CONCRETE IN ALL OFF-SITE CONCRETE WORK.
- CHISEL "S" FOR SEWER AND "G" FOR GAS WHERE THESE LINES PASS UNDER THE CURB.



**SITE PLAN**



**VICINITY MAP**

**INDEX OF DRAWINGS**

NO.	TITLE
1	COVER SHEET
2	GENERAL NOTE - QUANTITIES & MISC.
3 thru 14	PLAT MAP - UNIT NO. 2
15	GRADING NOTES & MISC.
16 thru 23	GRADING PLANS
24	STORM DRAIN PROFILES
25	UTILITY PLAN NOTES & MISC.
26 thru 30	UTILITY PLANS
31	SANITARY SEWER PROFILE "A"
32	SANITARY SEWER PROFILE "M" & "N"
33	SANITARY SEWER PROFILE "O" & "P"
34	SANITARY SEWER PROFILE "Q" & "R"
35	SANITARY SEWER PROFILE "Q" SUPPLEMENTAL INFORMATION ONLY
36	MISC. DETAILS

**SEWER NOTES**

- HOUSING SERVICES SHALL COMPLY WITH THE WESTERN PLUMBING CODE AS TO SEPARATION DISTANCE.
- ALL HOUSES TO BE SERVED INDIVIDUALLY AS PER SECTION 313 OF THE UNIFORM PLUMBING CODE.
- CONCRETE COLLARS REQUIRED AROUND WATER VALVES AND HUBHOLE COVERS AT SURFACE OF PAVED AREAS ON MAJOR STREETS, ASPHALT COLLARS ON MINOR STREETS.
- ALL SEWER PIPE 4 TO 15 INCHES IN DIAMETER SHALL BE PVC PIPE, MEETING THE REQUIREMENTS OF ASTM 3034 SDR 35.
- ALL SEWER PIPE 18 TO 24 INCHES IN DIAMETER SHALL BE PVC PIPE, MEETING THE REQUIREMENTS OF ASTM 3219 OR REINFORCED CONCRETE PIPE MEETING THE REQUIREMENTS OF ASTM C29, 60-1.6, OR VITRIFIED CLAY PIPE.

**STREET LIGHTING NOTE**

ALL STREET LIGHTING INSTALLATIONS SHALL CONFORM TO THE LATEST ISSUE OF THE STANDARD DETAILS AND SPECIFICATIONS OF THE CITY OF LAS VEGAS, AND SHALL ALSO CONFORM TO THE "UNIFORM STANDARD SPECIFICATIONS FOR PUBLIC WORKS CONSTRUCTION OF OFF-SITE IMPROVEMENTS", CLARK COUNTY, NEVADA AREA, UNLESS OTHERWISE NOTED.

**STREET NOTES**

- A.C. PAVEMENT TO BE 1/2" ABOVE LIP OF GUTTER AFTER COMPACTION.
- SUBGRADE FOR TYPE 1 UNDER CURB AND GUTTER AND UNDER A.C. TO BE CONTINUOUS.
- FOG SEAL TO BE APPLIED AFTER FINAL CORRECTIONS AND ADJUSTMENTS HAVE BEEN MADE.
- THE MAXIMUM GRADE BREAK OCCURRING IN THE CROSS SECTION SHALL BE 2% AND SHALL FALL BETWEEN A DRIVING LANE AND A PARKING LANE.
- NATIVE MATERIAL MAY BE USED IN LIEU OF TYPE 1 WHEN PROCESSED FOR APPROVAL IN ACCORDANCE WITH CITY OF LAS VEGAS STATEMENT OF POLICY DATED 07/25/85.

**ESTIMATE OF QUANTITIES**

STREET	PRIVATE	PUBLIC	TOTAL
2" AC PVMT. W/4" TYPE 2 BASE	40,225 SY		40,225 SY
"A" TYPE CURB	990 LF		990 LF
"L" TYPE CURB & GUTTER	1,140 LF		1,140 LF
ROLL TYPE CURB & GUTTER	22,973 LF		22,973 LF
CONCRETE VALLEY GUTTER	1,082 SF		1,082 SF
<b>Storm Drain</b>			
12" RCP	28 LF		28 LF
18" RCP	96 LF		96 LF
30" x 19" LO-HED CONCRETE PIPE	100 LF		100 LF
48" TYPE 1 ECCENTRIC MANHOLE	1 EA		1 EA
TYPE A DROP INLET, "A" = 3'-6"	6 EA		6 EA
<b>Sewer</b>			
48" MANHOLE	43 EA		43 EA
60" MANHOLE	12 EA		12 EA
8" PVC	7910 LF		7910 LF
8" PVC (EXTRA DEPTH OVER 7.0')	235 LF		235 LF
18" PVC	2175 LF		2175 LF
18" PVC (EXTRA DEPTH OVER 7.0')	1165 LF		1165 LF
4" SEWER LATERALS	2985 LF		2985 LF
NOT FOR CONSTRUCTION - BIDDING PURPOSES ONLY			
48" MANHOLE	13 EA		13 EA
10" PVC	2693 LF		2693 LF
10" PVC (EXTRA DEPTH OVER 7.0')	620 LF		620 LF

**BENCHMARK**

C105W4 - NAIL IN WEST SIDE OF POWER POLE NO. 12 AT NORTHWEST QUAD. OF DURANGO DRIVE AND SAHARA AVENUE. CLARK COUNTY DATUM ELEV. = 2661.99.

Avoid cutting underground utility lines. It's costly.

**Call before you Dig.**

1-800-227-2600  
UNDERGROUND SERVICE USA

**APPROVALS**

<i>[Signature]</i> CLV ENGINEER	8-13-87 DATE
<i>[Signature]</i> CLV QUALITY CONTROL ENGINEER	7/28/87 DATE
<i>[Signature]</i> CLV FIRE MARSHALL	8/4/87 DATE
<i>[Signature]</i> CLV SANITATION ENGINEER	7-28-87 DATE
<i>[Signature]</i> CLV ELECTRICAL SUPERVISOR	7-28-87 DATE
<i>[Signature]</i> CLV ELECTRICAL COORDINATOR	7/2/87 DATE
<i>[Signature]</i> CLV TRAFFIC ENGINEER	7/31/87 DATE
<i>[Signature]</i> CLV CHIEF LAND DEVELOPMENT AND FLOOD CONTROL	8-10-87 DATE

DESCRIPTION

REV DATE

7/23 7/26/87  
R.E. NO. 7/26/87

STATE OF NEVADA  
Professional Engineer  
No. 10111  
G. WALLACE, INC.  
Engineering/Architecture  
1555 SOUTH RAINBOW BLVD., LAS VEGAS, NEVADA 89102

FOOTHILLS COUNTRY CLUB UNIT NO. 2  
AT PECOCLE RANCH  
GENERAL NOTES  
QUANTITIES & MISCELLANEOUS

SHEET  
**2**  
OF 36 SHEETS