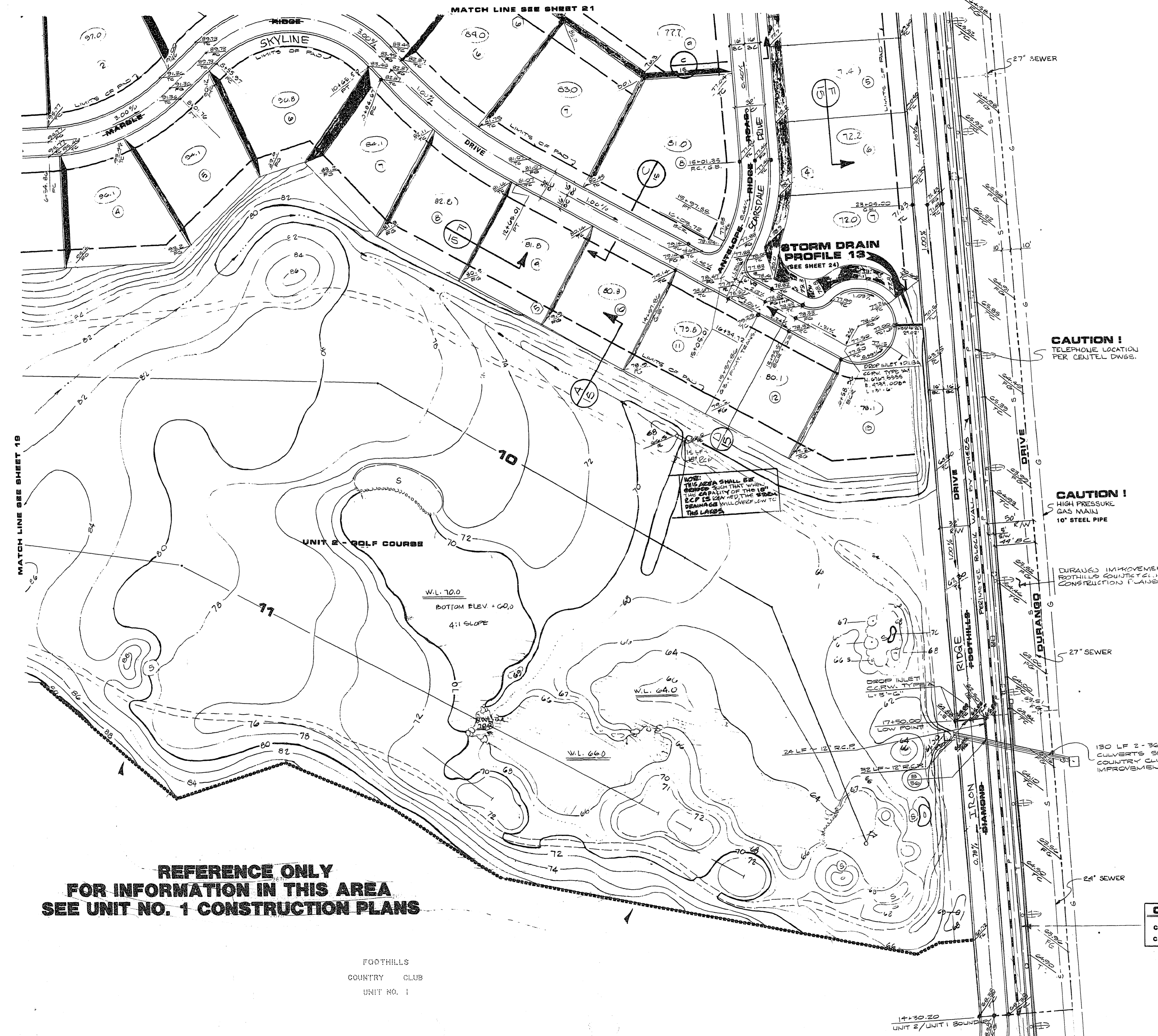
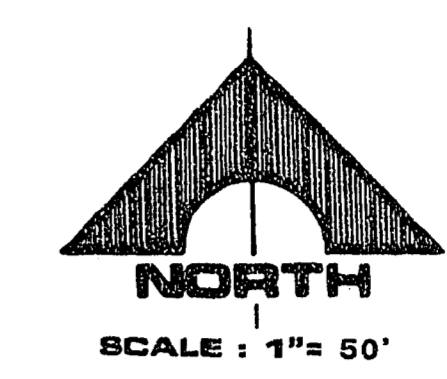


11-7-100



MATCH LINE SEE SHEET 19

MATCH LINE SEE SHEET 21

CAUTION!
TELEPHONE LOCATION
PER CENTEL DWGS.

CAUTION!
HIGH PRESSURE
GAS MAIN
10" STEEL PIPE

DURANGO IMPROVEMENTS PER
FOOTHILLS COUNTRY CLUB UNIT NO. 1
CONSTRUCTION PLANS.

130 LF 2'-36" R.C.P.
CULVERTS SEE FOOTHILLS
COUNTRY CLUB UNIT NO. 1
IMPROVEMENT PACKAGE

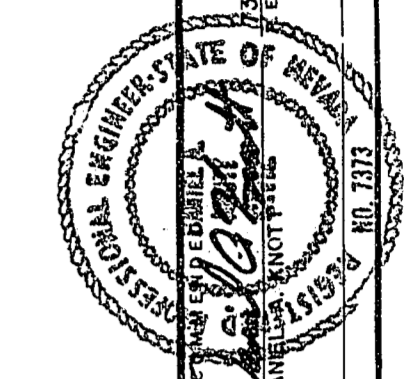
CAUTION!
CONTRACTOR TO USE CARE DURING CONSTRUCTION.
CABLE IS SERVICE TO CITICORP'S COMPUTER SYSTEM.

REFERENCE ONLY
FOR INFORMATION IN THIS AREA
SEE UNIT NO. 1 CONSTRUCTION PLANS

FOOTHILLS
COUNTRY CLUB
UNIT NO. 1

APPROVAL

CLV CHIEF LAND DEVELOPMENT
DATE 8/10/87



JOB NO. 1074-1407-2
DATE 8/10/87
DRAWN BY
CHECKED BY

G.C. WALLACE, INC.
Engineering/Architecture
1575 SOUTH BANKWAY, RENO, NEVADA 89502

FOOTHILLS COUNTRY CLUB UNIT NO. 2
AT PECOLE RANCH
GRADING PLAN UNIT NO. 2

SHEET
20
OF 34 SHEETS

JOB NO. 1074-1407-2

1074-1407-2