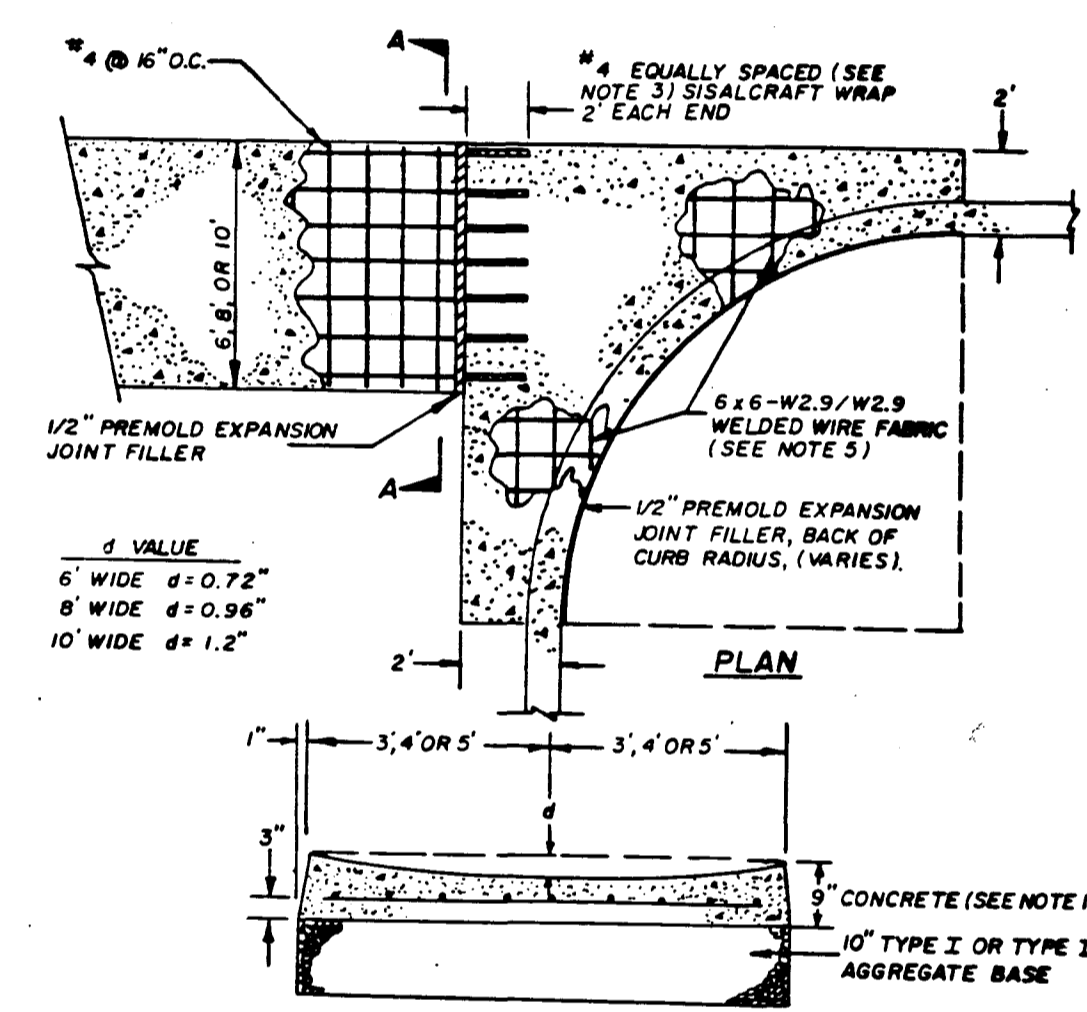
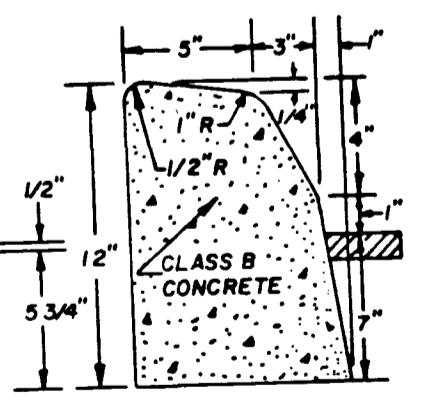


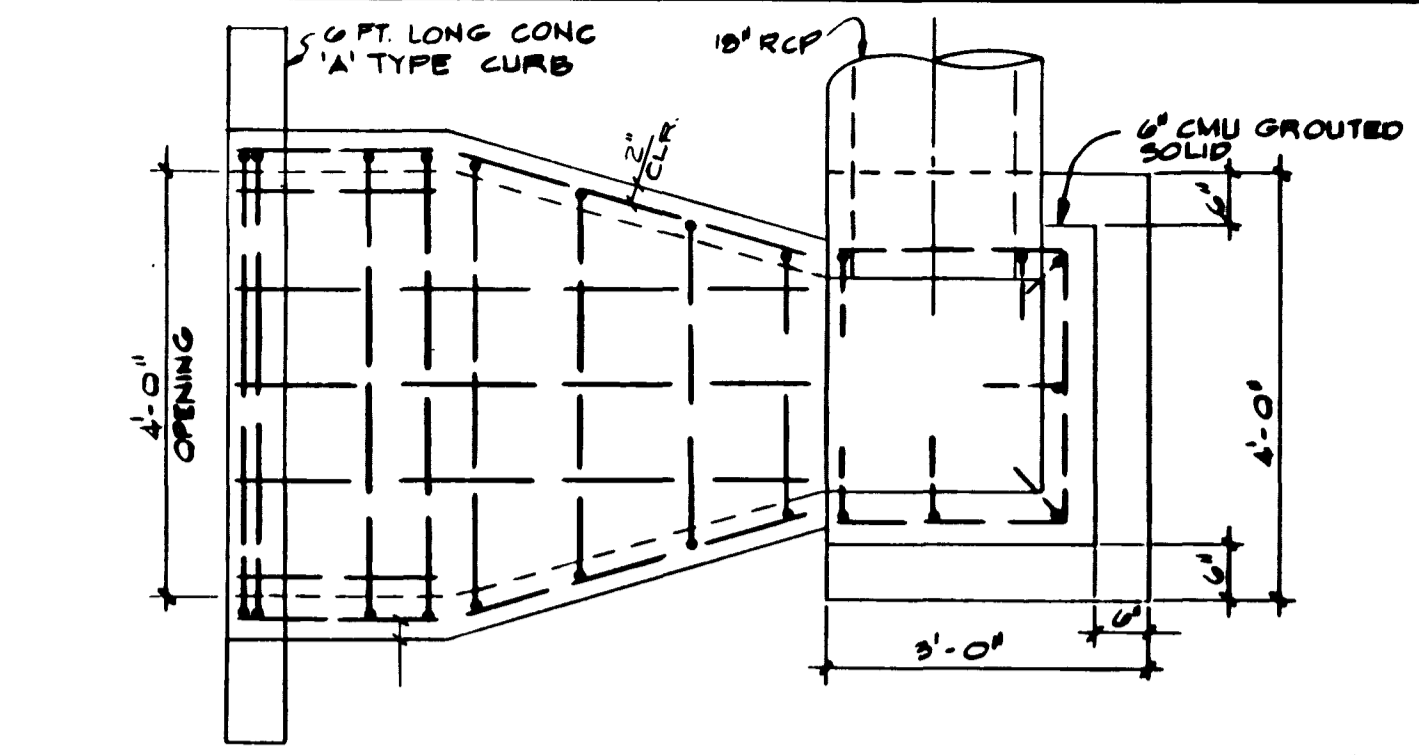
WHEEL CHAIR RAMP



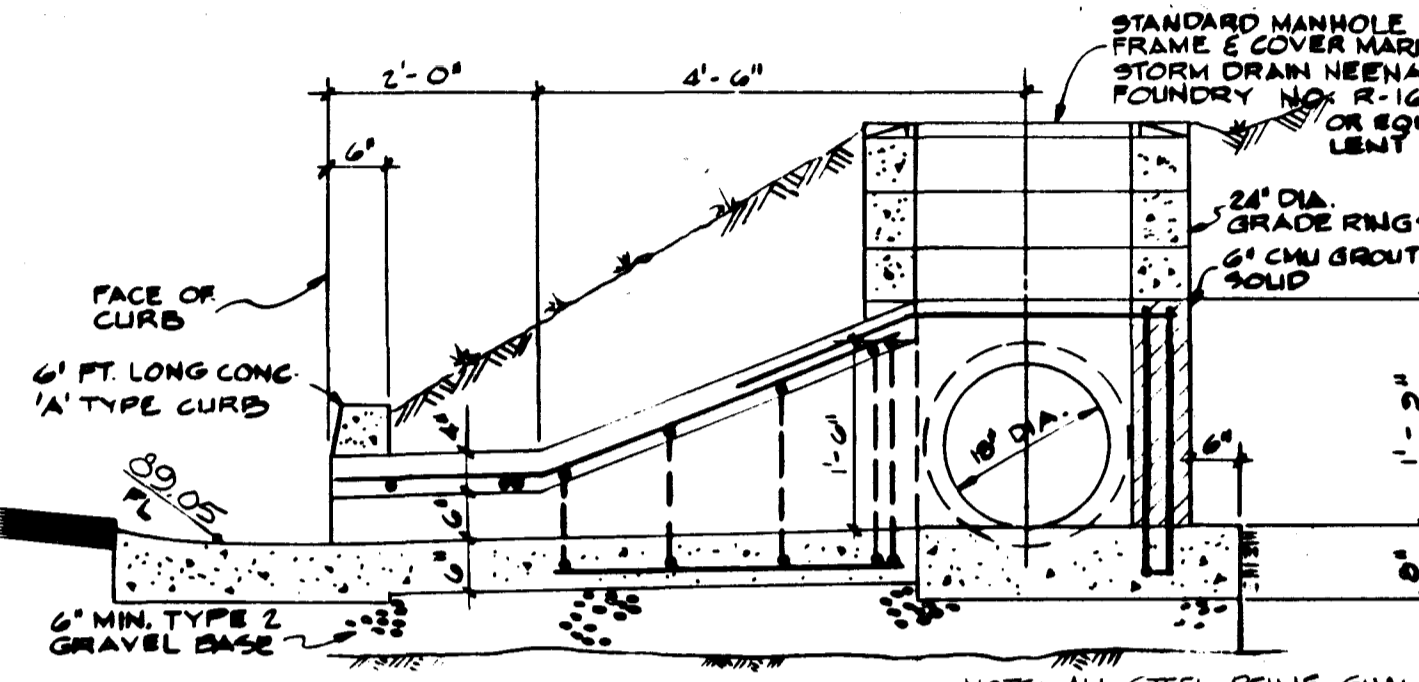
VALLEY GUTTER



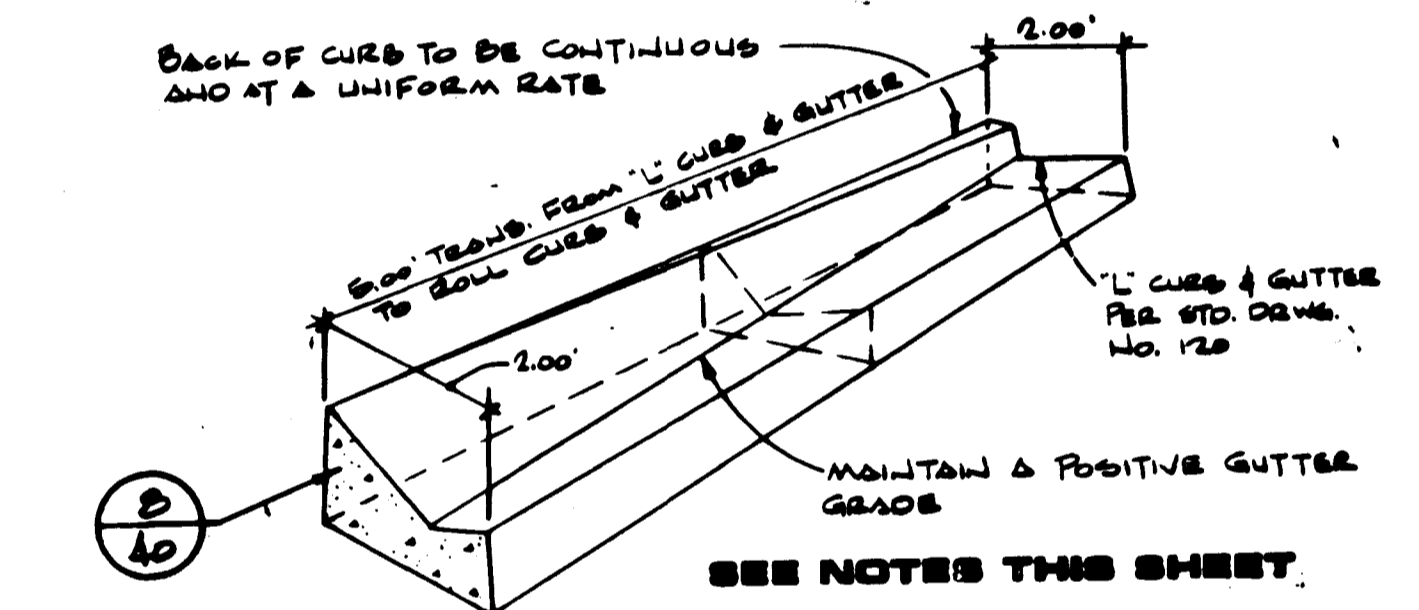
'A' CURB SECTION



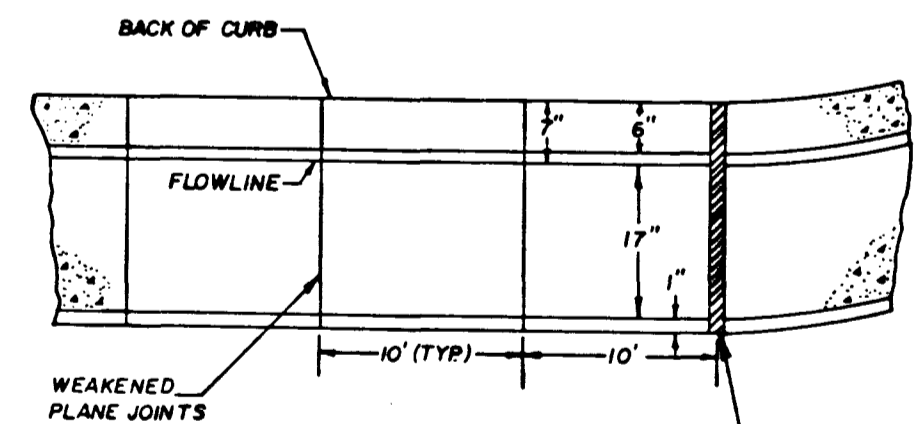
(S1)



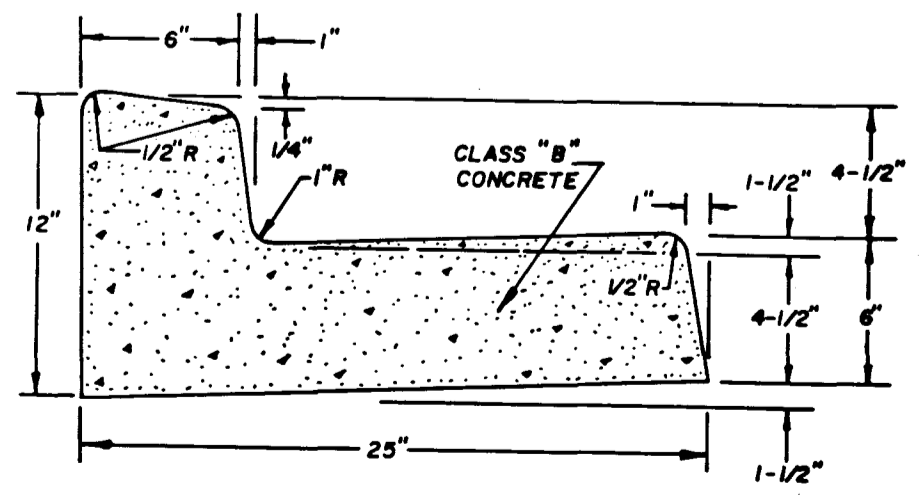
(S1)



TRANSITION FROM "L" TO ROLL CURB AND GUTTER

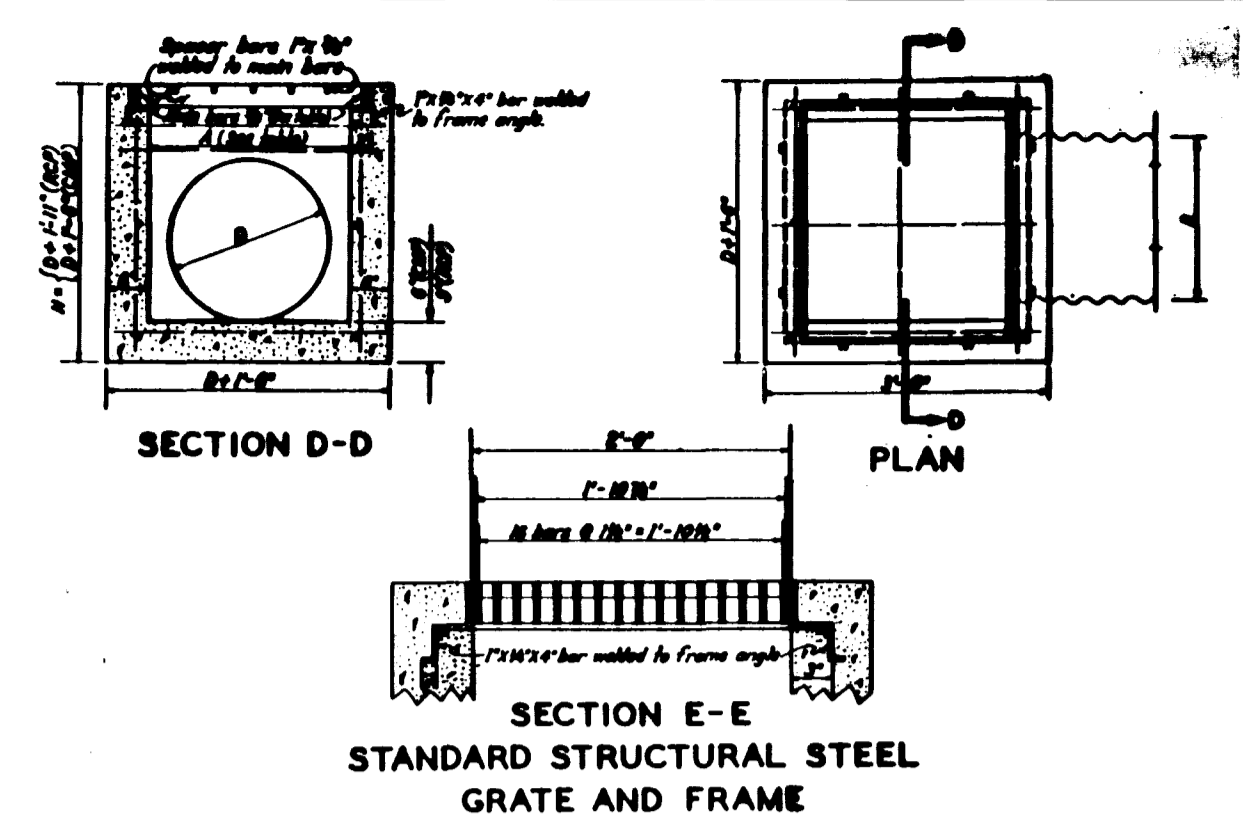


PLAN



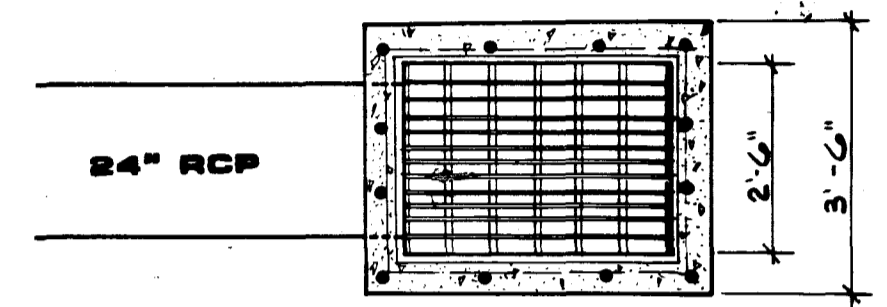
TYPICAL SECTION

"L" TYPE CURB & GUTTER



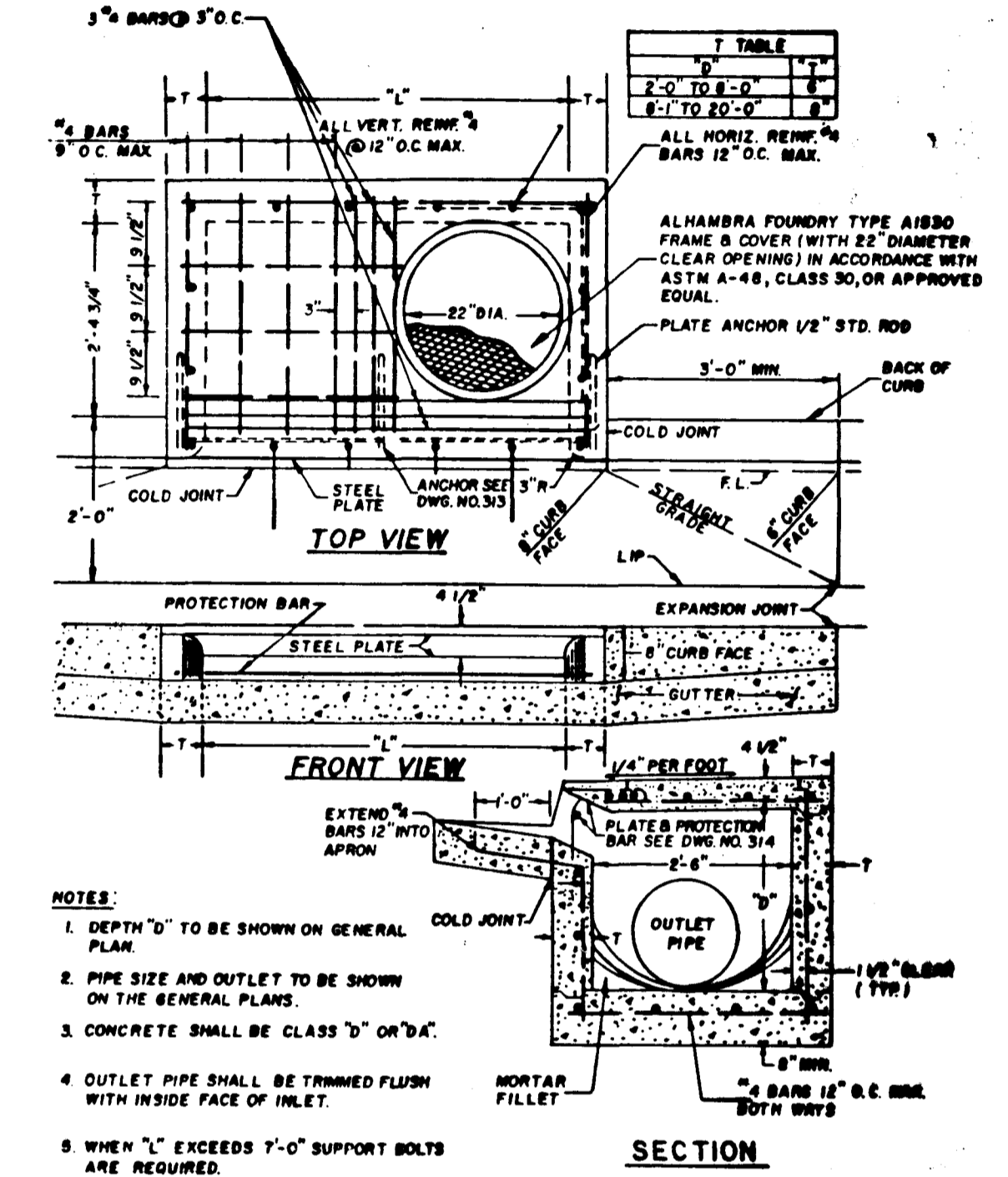
STANDARD STRUCTURAL STEEL GRATE AND FRAME

TYPE B

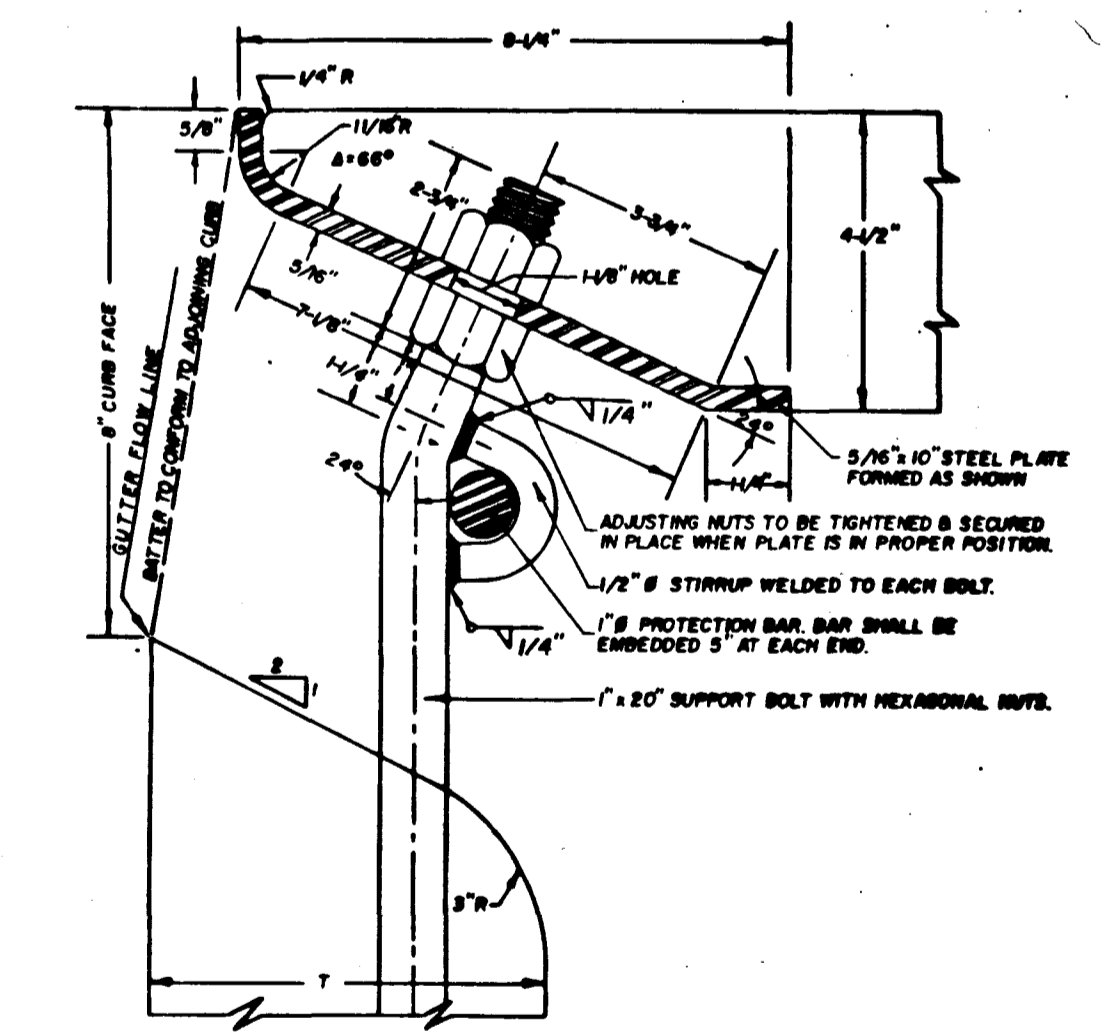


BUBBLER STRUCTURE

(C1)



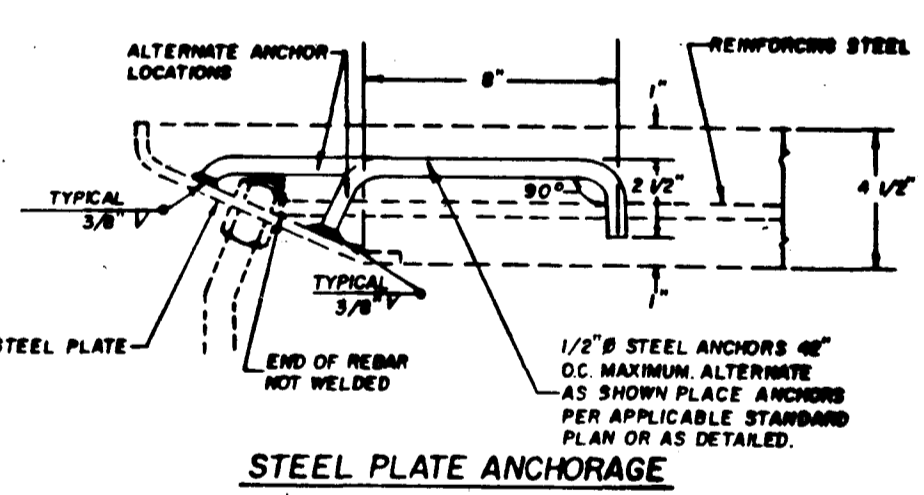
TYPE "A"



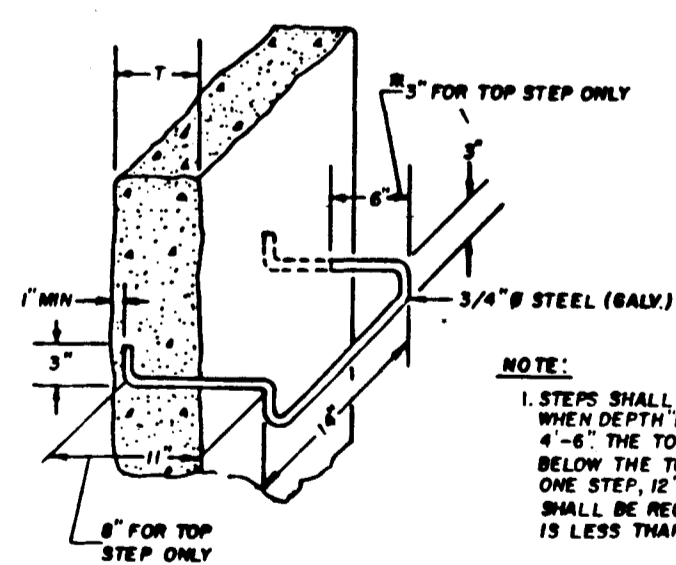
- NOTES:
1. PROTECTION BAR SHALL BE REQUIRED ON ALL INLETS.
 2. SUPPORT BOLTS SHALL BE INSTALLED WHEN LENGTH OF OPENING EXCEEDS 4'-0" AND SHALL BE SPACED AT NOT MORE THAN 4'-0" O.C. AND NOT LESS THAN 3'-0" O.C.
 3. ALL EXPOSED METAL PARTS SHALL BE GALVANIZED AND GALVANIZING DAMAGED BY FABRICATION OR INSTALLATION SHALL RECEIVE TWO COATS OF ALUMINUM PAINT (SALVONOR OR EQUAL.)

STEEL PLATE AND PROTECTION BAR

DROP INLETS

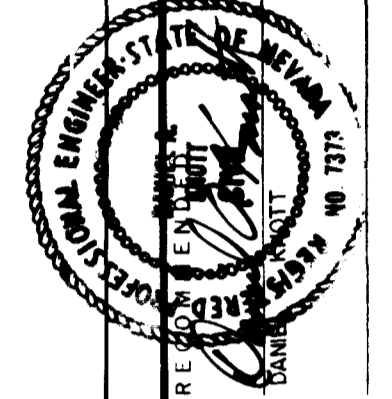


STEEL PLATE ANCHORAGE



STEP DETAIL

- GENERAL NOTES
- 1- All concrete shall be Class A or AA.
 - 2- Reinforcing steel shall be #4 bars with maximum space of 18" centers, wired tightly at all intersections, and embedded at least one inch clear of concrete surface.
 - 3- Exposed edges of concrete shall be chamfered by using one inch triangular finishing to form.
 - 4- Dimensions may be varied to fit local conditions if ordered by the Engineer.
 - 5- Drop Inlet with Concrete Cover shall be shown as TYPE 1.
 - 6- Drop Inlet with Standard Structural Steel Grate and Frame shall be shown as TYPE 2.
 - 7- Commercial prefabricated gratings approved by the Bridge Division may be used in lieu of the field welded grating shown above.



G.C. WALLACE, INC. Engineering/Architecture

FOOTHILLS COUNTRY CLUB UNIT NO. 1 AT PECCOLE RANCH DURANGO/SAHARA STORM DRAIN DETAILS

SHEET 51 OF 52 SHEETS

APPROVAL:

Signature and title: CIV. CHIEF LAND DEVELOPMENT

DATE: 5-27-87

