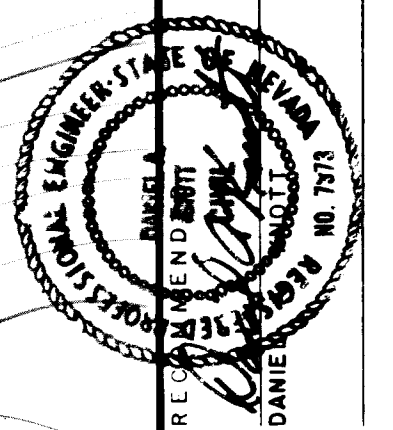


| REV | DATE | DESCRIPTION |
|-----|---------|---|
| 1 | 11/7/12 | REV. LOT LAYOUT, GRASSES & STREET NAMES |
| 2 | 11/7/12 | REV. LOT LAYOUT & GRASSES |



G.C. WALLACE, INC.
Engineering/Architecture
1535 SOUTH RAINBOW BLVD. LAS VEGAS, NEVADA 89102

FOOTHILLS COUNTRY CLUB UNIT NO. 1
AT PECCOLE RANCH
GRADING PLANS - UNIT NO. 1,
LOTS 28 & 35

APPROVAL

[Signature]
CLV CHIEF LAND DEVELOPMENT

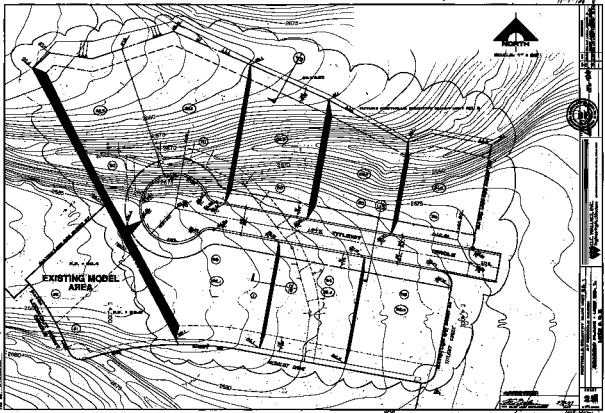
5-31-12
DATE

SHEET
25
OF 52 SHEETS

JOB NO. 543.329D

4520

107Y-1407-1



NORTH
1" = 100'

EXISTING MODEL AREA

ACE STYLENT



WILLIAMS, INC.
11-7-128

11-7-128

11-7-128