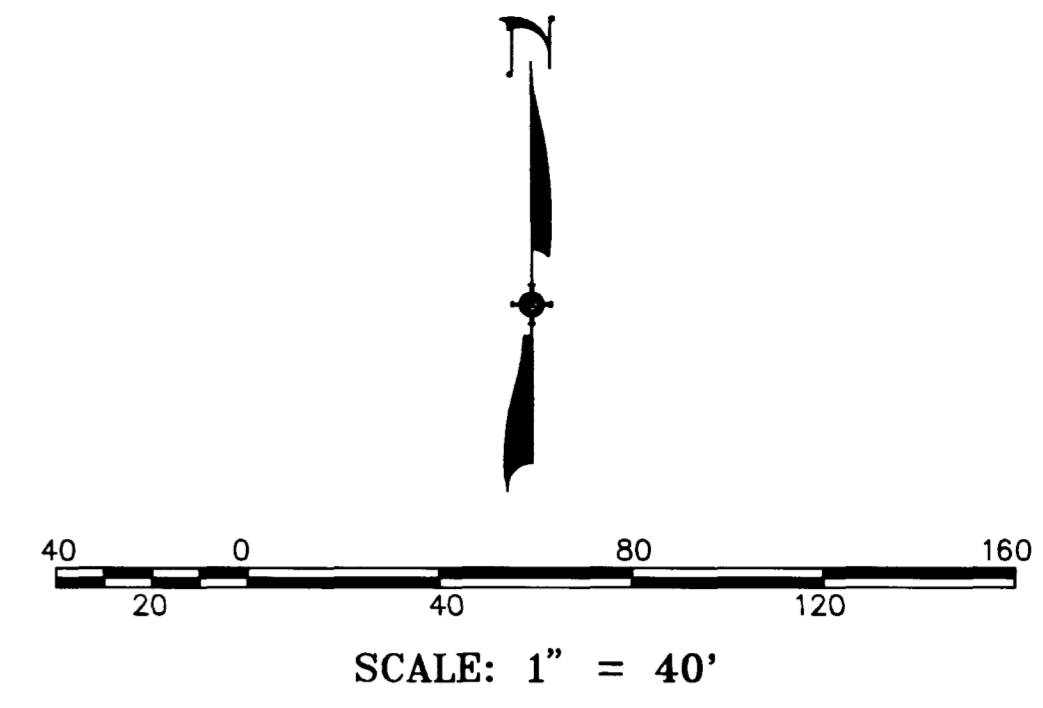


AHEY ROAD - PUBLIC
 SCALE = 1" = 40' HORIZONTAL
 SCALE = 1" = 4' VERTICAL



UTILITY NOTE

UTILITY LOCATIONS SHOWN HEREON ARE APPROXIMATE ONLY. IT SHALL BE THE CONTRACTOR'S RESPONSIBILITY TO DETERMINE THE EXACT HORIZONTAL AND VERTICAL LOCATION OF ALL EXISTING UNDERGROUND UTILITIES PRIOR TO COMMENCING CONSTRUCTION. NO REPRESENTATION IS MADE THAT ALL EXISTING UTILITIES ARE SHOWN HEREON. THE ENGINEER ASSUMES NO RESPONSIBILITY FOR UTILITIES NOT SHOWN OR UTILITIES NOT SHOWN IN THEIR PROPER LOCATION.

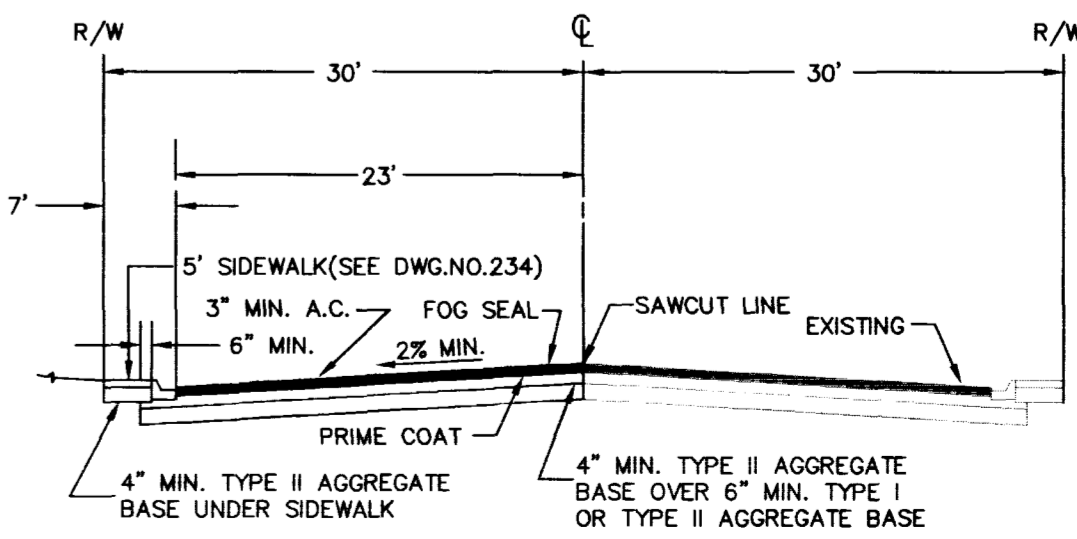
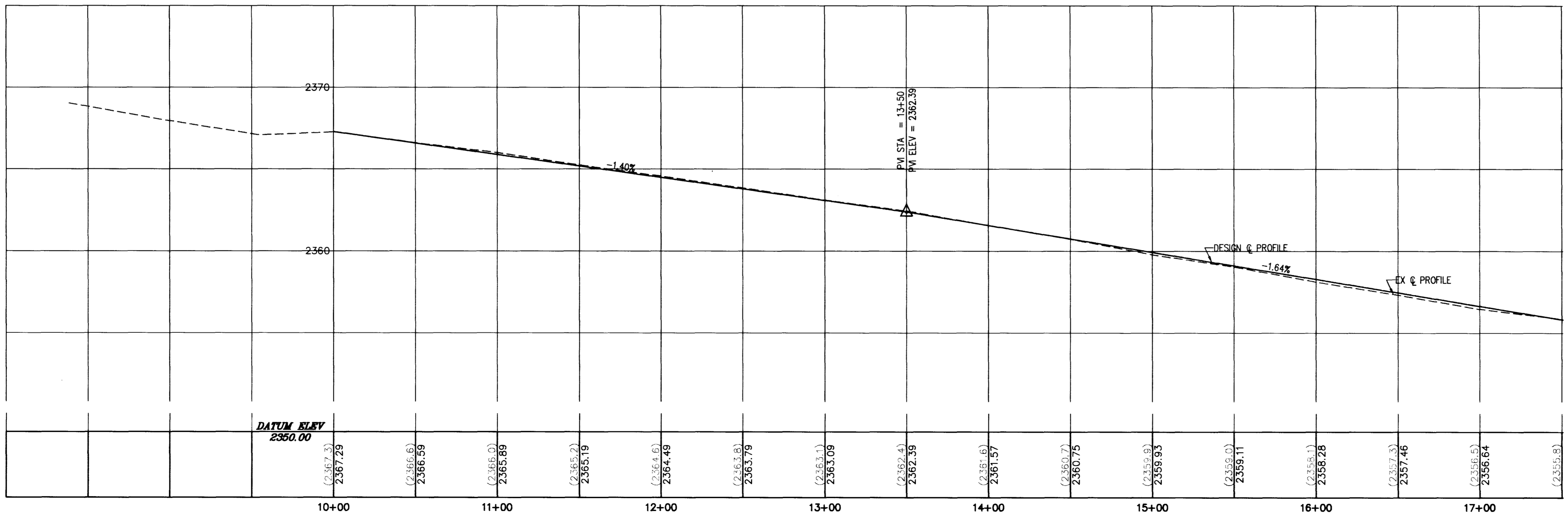
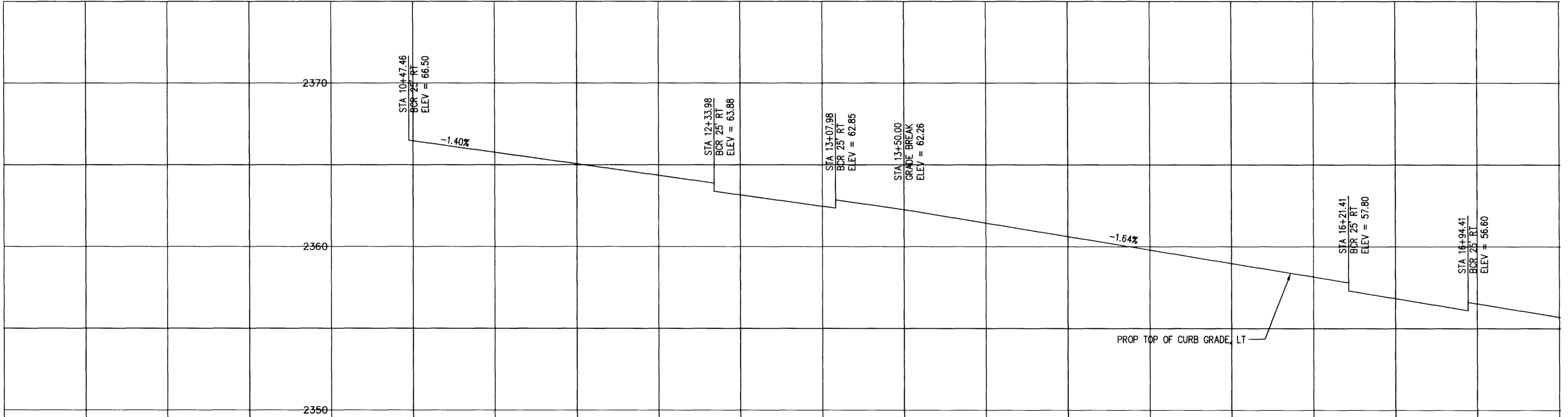
Avoid cutting underground utility lines. If costly, Call before you Dig
 1-800-227-2600
 UNDERGROUND SERVICE (USA)

PROJECT BENCHMARK
 CITY OF LAS VEGAS BENCHMARK #1LV00-9NEE6: A RIVET & PLATE IN TOP OF CEMENT ELECTRICAL VAULT PAD, WEST SIDE BUFFALO, 100FT. SOUTH OF CONSTANTINOPLE AVENUE.
 ELEVATION = 714.1225 METERS (NAVD 88)
 2342.917 FEET (NAVD 88)

BASIS OF BEARINGS
 NORTH 01°04'56" WEST, BEING THE CENTERLINE OF SEAFORTH AVENUE PER FILE 74 OF SURVEYS, PAGE 78, CLARK COUNTY, NEVADA RECORDER'S CUMULATIVE MAP INDEX.

- CONSTRUCTION NOTES**
- ① CONSTRUCT 24" "L" TYPE CURB AND GUTTER PER STD DWG NO 216
 - ③ CONSTRUCT SIDEWALK RAMP PER STD DWG NO 235 CASE I A & B AS SHOWN
 - ④ CONSTRUCT SIDEWALK PER STD DWG NO 234
 - ⑥ SAWCUT LINE AT STREET CENTERLINE
 - ⑨ CONSTRUCT ASPHALTIC CONCRETE PER DETAIL C
 - ⑩ CONSTRUCT COMMERCIAL DRIVEWAY (OPTION B) PER STD DWG NO 225 AND 222A
 - ⑪ CONSTRUCT SIDEWALK DRAIN PER STD DWG NO 236
 - ⑰ CONSTRUCT 8" CROSS GUTTER PER STD DWG NO 228
 - ⑱ INSTALL 100W HPS LUMINAIRE PER STD DWG NO 309 WITH FOUNDATION PER STD DWG NO 318
 - ⑲ INSTALL NO 3-1/2 PULLBOX PER STD DWG NO 338
 - ⑳ INSTALL 1-1/4" CONDUIT FOR STREET LIGHTING STANDARD

- UTILITY NOTES:**
- ③ - INSTALL 6" X 8" TAPPING TEE AND VALVE
 - ⑦ - INSTALL 8" DUCTILE IRON TEE W/THRUST BLOCK
 - ⑧ - INSTALL 8" DUCTILE IRON ELL (90°) W/THRUST BLOCK
 - ⑨ - INSTALL 8" WATER MAIN AWWA C-900 CLASS 150 W/3.5' MIN BURIAL DEPTH
 - ⑫ - REMOVE CAP AND BLOWOFF AND CONNECT PROPOSED 8" WATER LINE TO EXISTING 8" WATER LINE
 - ⑲ - LVVWD 10' X 20' EASEMENT
 - ⑳ - INSTALL 8" DOUBLE CHECK DETECTOR ASSEMBLY PER UDACS PLATE 20B



DETAIL C
 N.T.S.

SUMMIT ENGINEERING CORPORATION
 CONSULTING ENGINEERS AND SURVEYORS
 3444 SOUTH HIGHLAND, LAS VEGAS, NEVADA 89108
 PHONE: (702) 252-3238 FAX: (702) 252-3247

DESIGNED BY: E.W.A.
 DRAWN BY: E.W.A.
 CHECKED BY: R.D.C.
 SEPT. 26, 1997

IRWIN MOLASKY MIDDLE SCHOOL
 CCSD #0663
 PLAN & PROFILE - AHEY ROAD (WEST HALF)

NEVADA
 CLARK COUNTY
 LAS VEGAS

REV.	DATE	DESCRIPTION	BY	APP'D
1	12/28	REVISIONS PER CIVIL REVISIONS	MCB	MB

SCALE: 1" = 40'
 HORIZ. 1" = 40'
 VERT. 1" = 4'
 JOB NO. 71362
 EWT/RSB/PP-HEK/ky

SHEET 9 OF 20

3074

715-100

