

SUMMIT
ENGINEERING CORPORATION
CONSULTING ENGINEERS AND SURVEYORS
3441 SOUTH HIGHLAND, LAS VEGAS, NEVADA 89103
PHONE: (702) 252-3238 FAX: (702) 252-3247

DESIGNED BY: E.W.A.
DRAWN BY: E.W.A.
CHECKED BY: R.D.C.
SEPT. 26, 1997

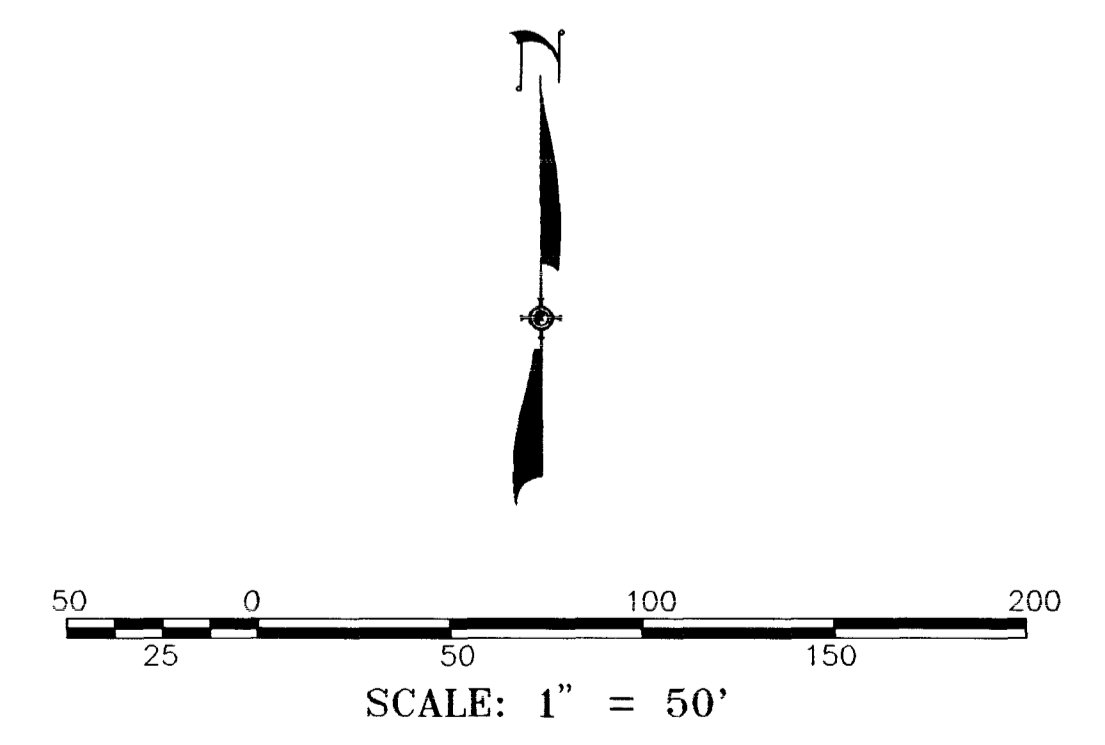
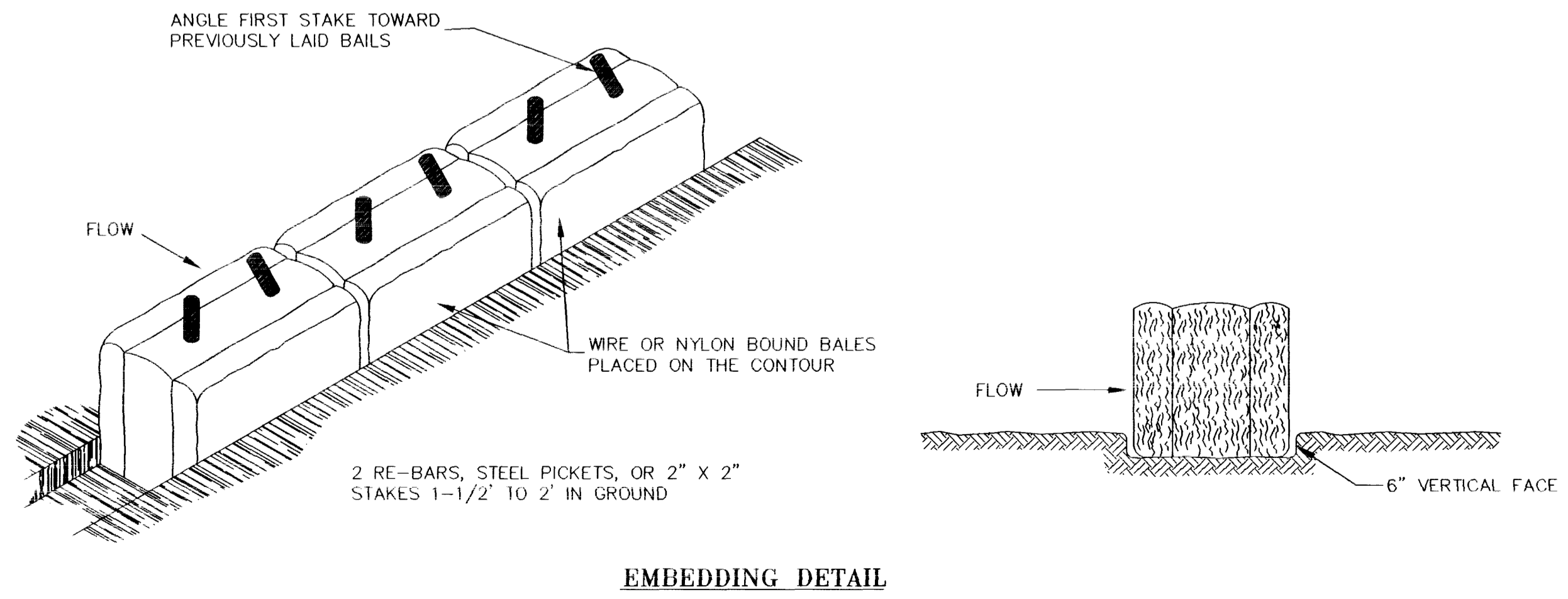
IRWIN MOLASKY MIDDLE SCHOOL
CCSD #0663
STORMWATER POLLUTION PREVENTION PLAN
CLARK COUNTY
LAS VEGAS, NEVADA

REV.	DATE	DESCRIPTION	BY	APP'D
18				
19				
20				

UTILITY NOTE

UTILITY LOCATIONS SHOWN HEREON ARE APPROXIMATE ONLY. IT SHALL BE THE CONTRACTOR'S RESPONSIBILITY TO DETERMINE THE EXACT HORIZONTAL AND VERTICAL LOCATION OF ALL EXISTING UNDERGROUND UTILITIES PRIOR TO COMMENCING CONSTRUCTION. NO REPRESENTATION IS MADE THAT ALL EXISTING UTILITIES ARE SHOWN HEREON. THE ENGINEER ASSUMES NO RESPONSIBILITY FOR UTILITIES NOT SHOWN OR UTILITIES NOT SHOWN IN THEIR PROPER LOCATION.

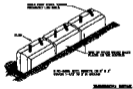
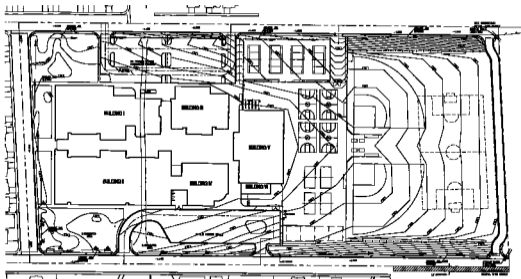
Avoid cutting underground utility lines. It's costly.
Call before you Dig
1-800-227-2600
UNDERGROUND SERVICE (USA)



Professional Engineer Seal for Margaret C. Brake, License No. 10134, State of Nevada, Civil Engineering.

3065

715-100



SUMMIT
 ARCHITECTS
 1000 N. 10th St., N. W.
 ALBUQUERQUE, N. M.
 85710

7TH WALDEN MIDDLE SCHOOL
 7TH AND WALDEN STS.
 ALBUQUERQUE, N. M.

DRAWN BY: [Name]
 CHECKED BY: [Name]
 DATE: [Date]