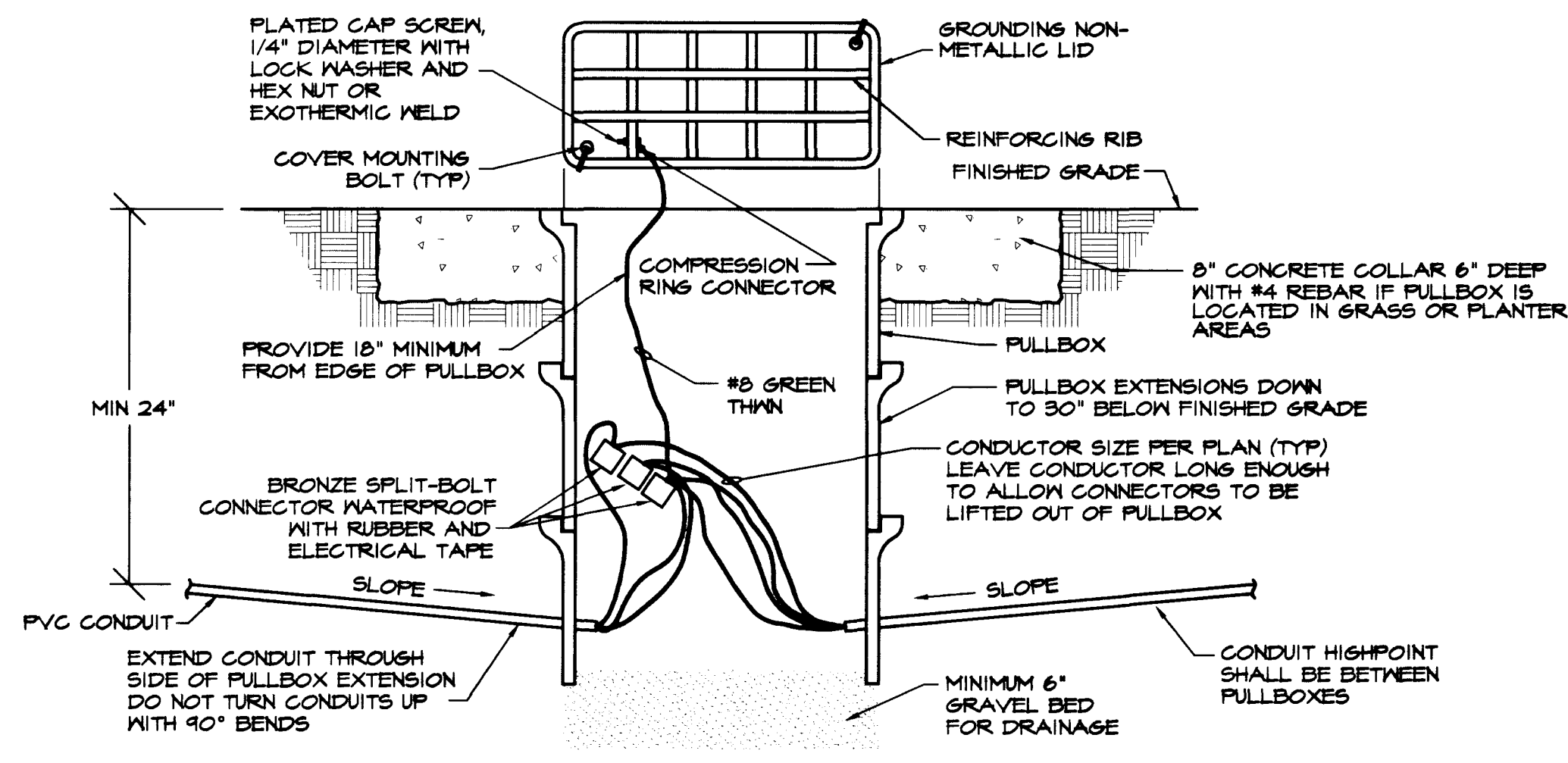
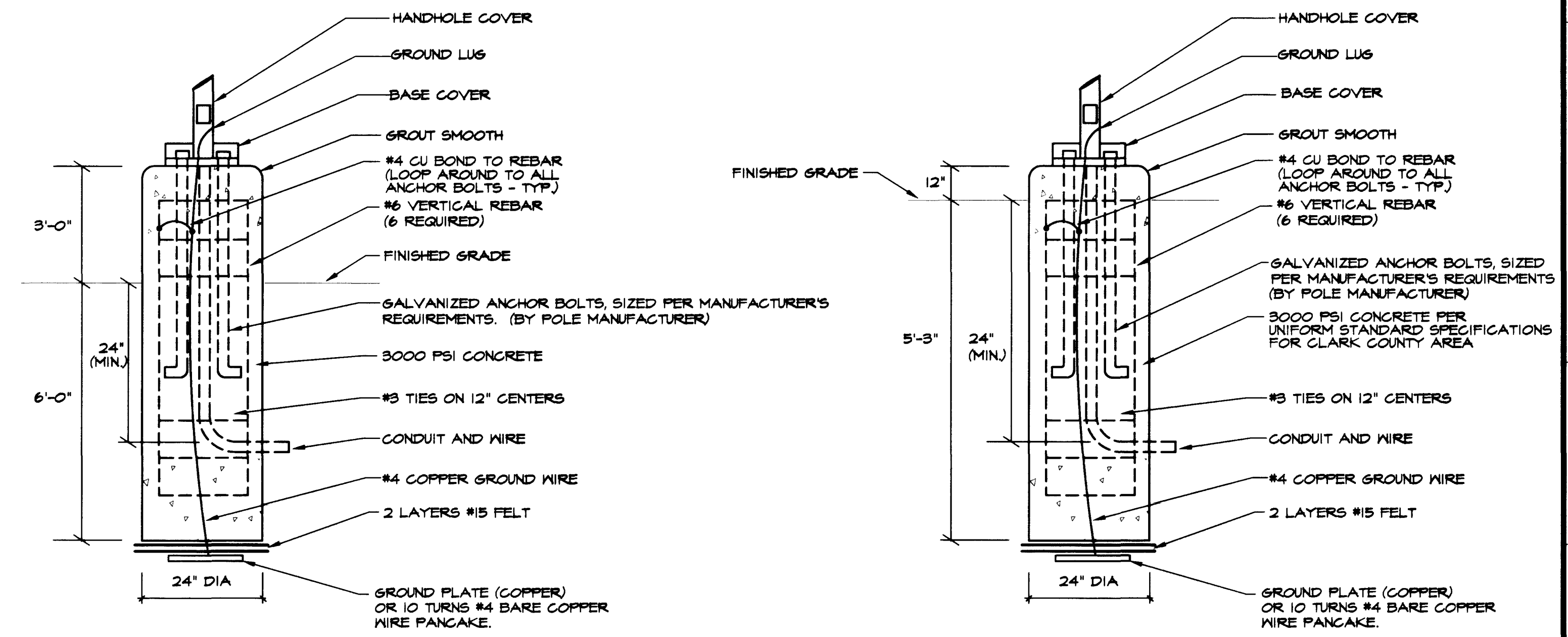


4 WATER LEVEL SENSOR DETAIL
ES-3 NOT TO SCALE

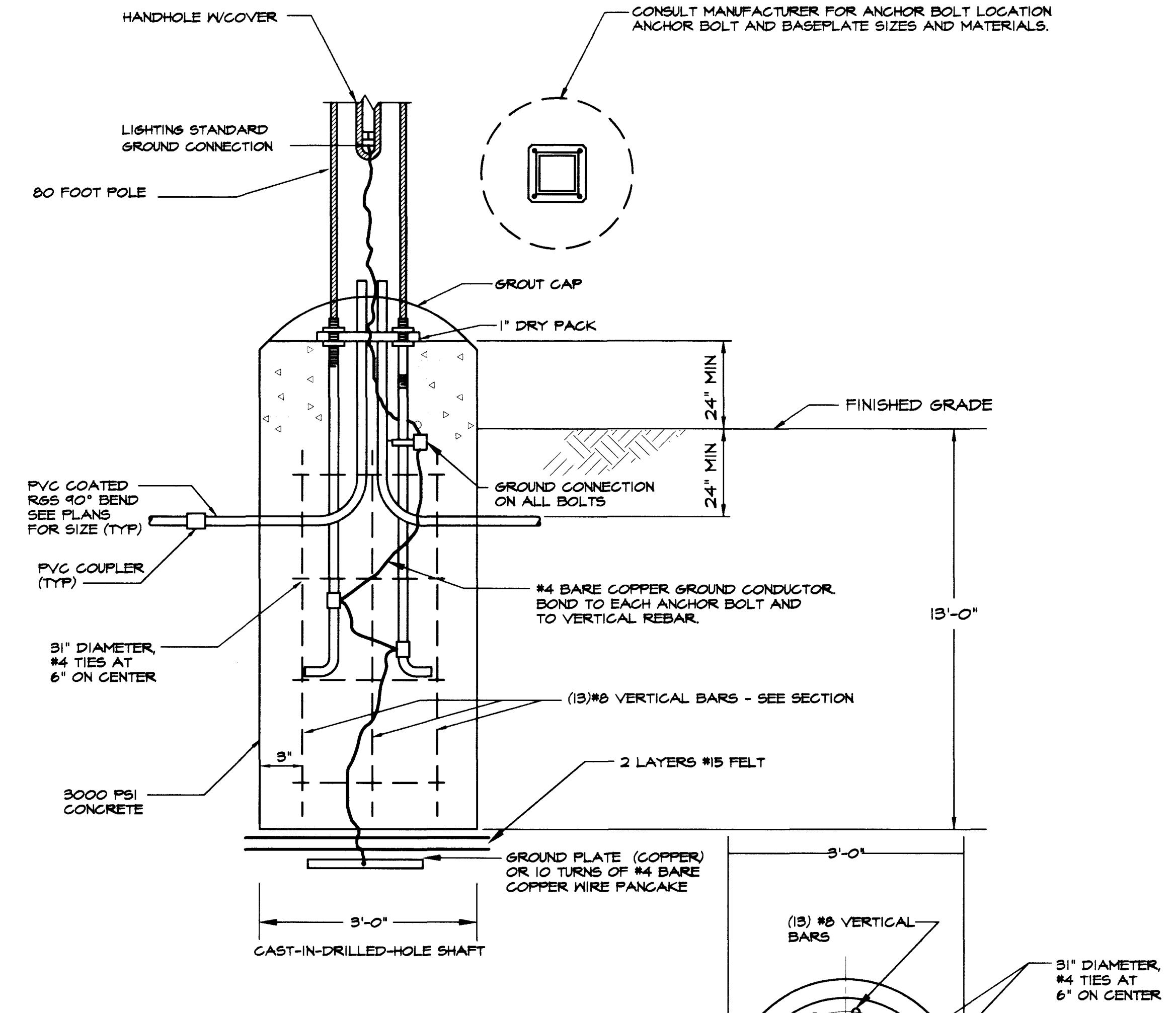


5 PULLBOX DETAIL
ES-3 NOT TO SCALE



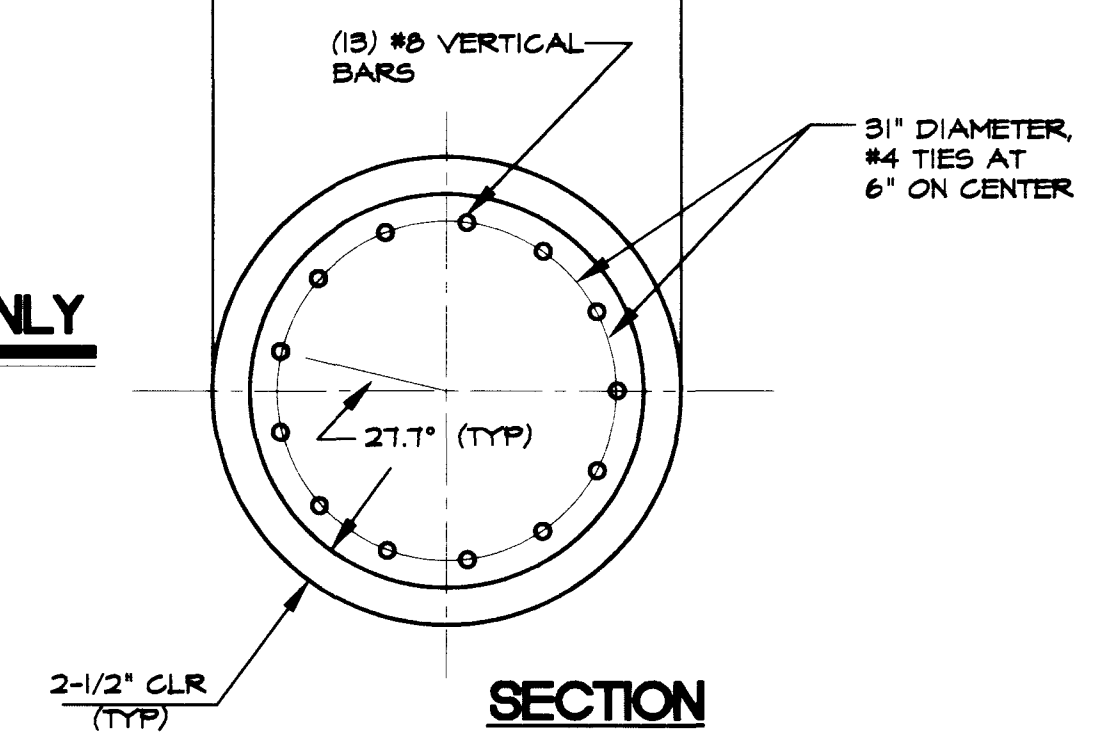
1 PARKING LOT FIXTURE FOUNDATION - F1, F2
ES-3 NOT TO SCALE

2 PATHWAY FIXTURE FOUNDATION - F3
ES-3 NOT TO SCALE

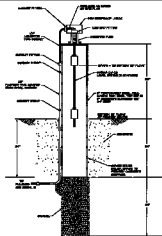


3 SOCCER POLE FOUNDATION DETAIL - PHASE 2 ONLY
ES-3 NOT TO SCALE

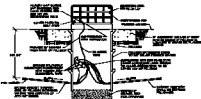
NOTES: POLE FOUNDATIONS FOR SOCCER FIELD LIGHTING WILL BE INSTALLED IN PHASE 2. DETAIL IS SHOWN FOR INFORMATION ONLY.



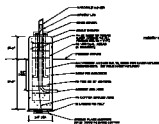
DATE	
REVISIONS	
CHECK BY TOM KROB	
DESIGN BY DSN/KCM	
JOB NO. 124/DETAILS	
DATE 07/09/11	
SCALE (H) AS SHOWN	
F.L.D. BK. #	
DEPARTMENT OF PARKS & LEISURE ACTIVITIES PROJECT: GOWAN SOCCER FIELD COMPLEX ELECTRICAL DETAILS	
1919 S. JONES BLVD. SUITE B LAS VEGAS, NEVADA 89102 (702) 871-3621 ELECTRICAL ENGINEERING	
DRAWING NO.	ES-3
SHEET	30
	57



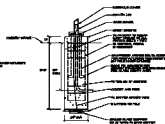
1 WATER LEVEL SENSOR DETAIL
NOT TO SCALE



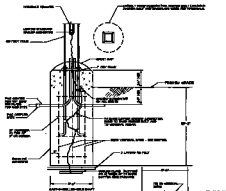
2 PULL LOCK DETAIL
NOT TO SCALE



3 PARKING LOT PICTURE FOUNDATION - PL, PE
NOT TO SCALE



4 PATHWAY PICTURE FOUNDATION - PE
NOT TO SCALE



5 SOCCER POLE FOUNDATION DETAIL - FRAME & ONLY
NOT TO SCALE

NOTE: THIS FOUNDATION DETAIL IS LIMITED ONLY TO FOUNDATIONS & ONLY TO HIGH SCHOOL FACILITIES.

