

970825

00955

AMENDED  
FINAL MAP OF  
**RED HILLS AT THE PUEBLO**  
A CONDOMINIUM COMMON INTEREST COMMUNITY

BOOK 71, PAGE 05 OF PLATS

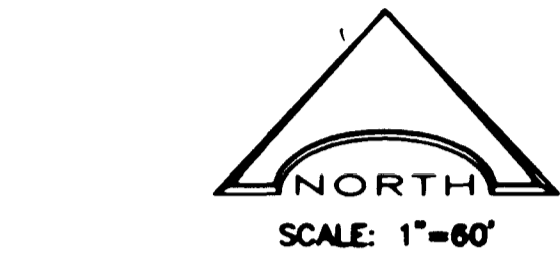
BEING A SUBDIVISION OF LOT 1, AS SHOWN ON THE PLAT OF "SUMMERLIN VILLAGE 2 - UNIT NO. 2"  
IN BOOK 50, PAGE 53, OF PLATS IN THE CLARK COUNTY RECORDER'S OFFICE, LYING WITHIN SECTION 20,  
TOWNSHIP 20 SOUTH, RANGE 60 EAST, M.D.M., CITY OF LAS VEGAS, CLARK COUNTY, NEVADA.

PHASE LINE CURVE DATA				
CURVE	RADIUS	LENGTH	TANGENT	DELTA
C1	14.00'	21.99'	14.00'	27°00'00"
C2	25.00'	38.66'	24.40'	88°35'57"
C3	689.00'	25.82'	12.91'	02°38'50"
C4	689.00'	61.41'	35.73'	05°04'25"
C5	689.00'	53.24'	26.43'	04°25'38"

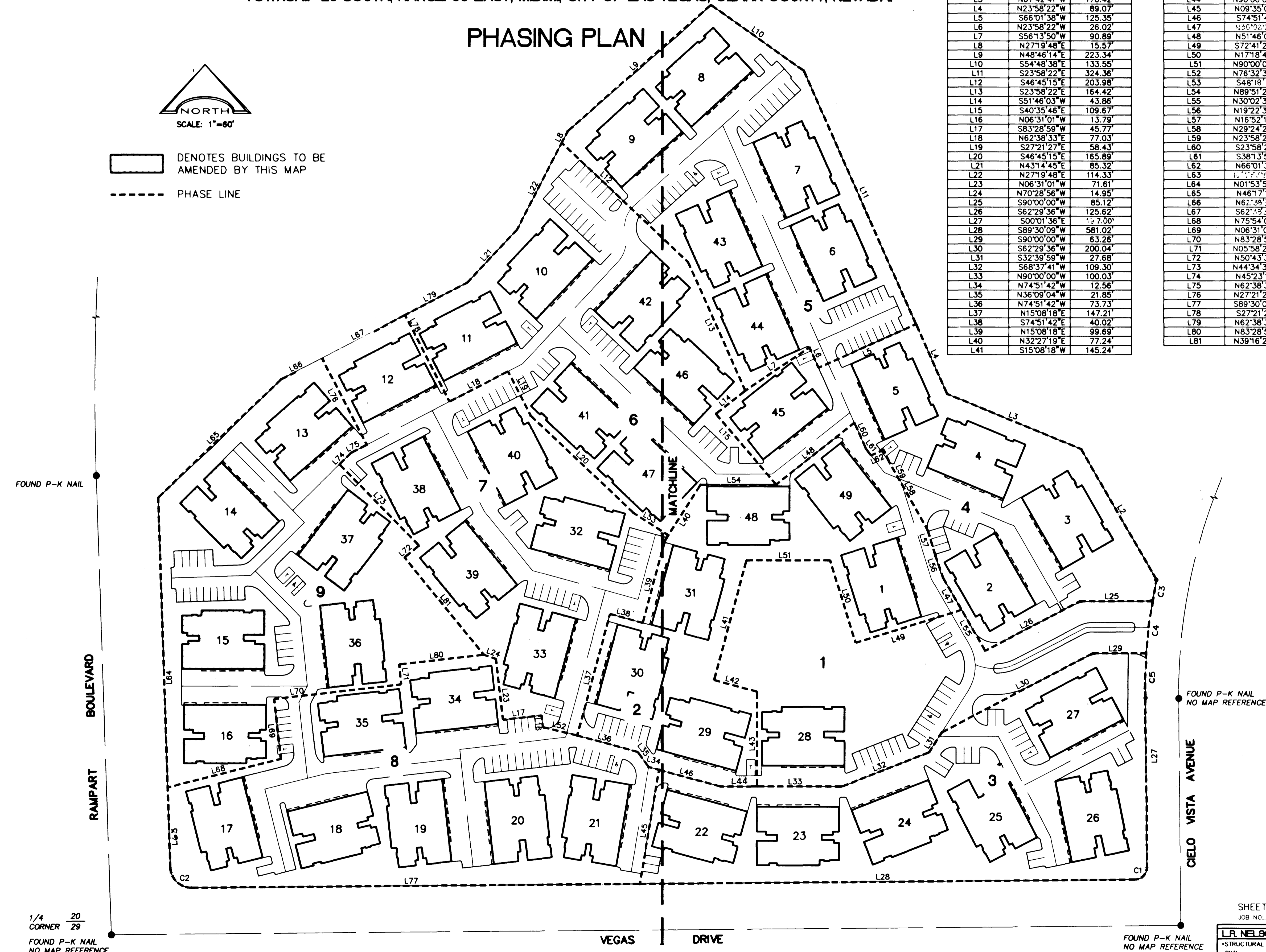
PHASE LINE LINE DATA		
LINE	DIRECTION	DISTANCE
L1	NOT USED	
L2	N30°02'39"W	176.25'
L3	N67°42'41"W	170.42'
L4	N23°58'22"W	89.07'
L5	S66°01'38"W	125.35'
L6	N23°58'22"W	26.02'
L7	S56°13'50"W	90.89'
L8	N27°19'48"E	15.57'
L9	N48°46'14"E	223.34'
L10	S54°48'38"E	133.55'
L11	S23°58'22"E	324.36'
L12	S46°45'15"E	203.98'
L13	S23°58'22"E	164.42'
L14	S51°46'03"W	43.86'
L15	S40°35'46"E	109.67'
L16	N06°31'01"W	13.79'
L17	S83°28'59"W	45.77'
L18	N62°38'33"E	77.03'
L19	S27°21'27"E	58.43'
L20	S46°45'15"E	165.89'
L21	N43°14'45"E	85.32'
L22	N27°19'48"E	114.33'
L23	N06°31'01"W	71.61'
L24	N70°28'56"W	14.95'
L25	S90°00'00"W	85.12'
L26	S62°29'36"W	125.62'
L27	S00°01'36"E	17.00'
L28	S89°30'09"W	581.02'
L29	S90°00'00"W	63.26'
L30	S62°29'36"W	200.04'
L31	S32°39'59"W	27.68'
L32	S68°37'41"W	109.30'
L33	N90°00'00"W	100.03'
L34	N74°51'42"W	12.56'
L35	N36°09'04"W	21.85'
L36	N74°51'42"W	73.73'
L37	N15°08'18"E	147.21'
L38	S74°51'42"E	40.02'
L39	N15°08'18"E	99.89'
L40	N32°27'19"E	77.24'
L41	S15°08'18"W	145.24'

PHASE LINE LINE DATA		
LINE	DIRECTION	DISTANCE
L42	S74°51'42"E	52.21'
L43	S00°00'00"W	110.66'
L44	N90°00'00"W	4.98'
L45	N09°35'02"E	135.15'
L46	S74°51'42"E	74.40'
L47	N30°02'39"W	43.58'
L48	N51°46'03"E	117.73'
L49	S72°41'20"W	130.05'
L50	N17°18'40"W	101.27'
L51	N90°00'00"W	98.25'
L52	N76°32'35"W	41.45'
L53	S48°18'18"E	49.03'
L54	N89°51'23"W	89.47'
L55	N30°02'39"W	55.46'
L56	N19°22'36"W	27.29'
L57	N16°52'14"W	32.32'
L58	N29°24'22"W	93.18'
L59	N23°58'22"W	13.19'
L60	S23°58'22"E	33.69'
L61	S38°13'57"E	9.67'
L62	N66°01'38"E	16.25'
L63	N17°18'40"W	44.32'
L64	N01°53'54"W	33.46'
L65	N46°17'10"E	199.92'
L66	N62°38'33"E	53.97'
L67	S62°29'36"W	109.80'
L68	N75°54'02"E	137.22'
L69	N06°31'01"W	70.26'
L70	N83°28'59"E	150.22'
L71	N05°58'22"W	23.51'
L72	N50°43'37"E	21.96'
L73	N44°34'35"W	133.24'
L74	N45°23'13"E	19.08'
L75	N62°38'33"E	20.65'
L76	N27°21'27"W	114.59'
L77	S89°30'09"W	526.38'
L78	S27°21'27"E	114.09'
L79	N62°38'33"E	82.24'
L80	N83°28'59"E	100.13'
L81	N39°16'23"W	147.19'

PHASING PLAN



— DENOTES BUILDINGS TO BE AMENDED BY THIS MAP  
- - - PHASE LINE



SHEET 2 OF 7  
JOB NO. 218-061-941

**LR NELSON CONSULTING ENGINEERS**  
 -STRUCTURAL 3035 E. Patrick Lane  
 -CIVIL Las Vegas, NV 89120  
 -SURVEY (702) 798-7978

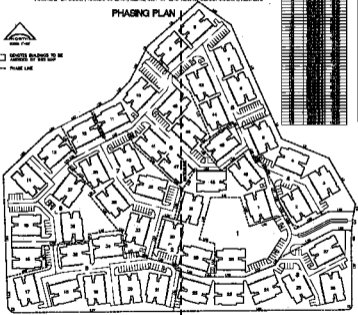
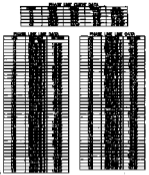
91025

00953

APPROVED  
FINAL MAP OF  
**RED HILLS AT THE PUEBLO**  
A CONDOMINIUM COMMON INTEREST COMMUNITY

BOOK 71, PAGE 68 OF PLATS  
BEING A SUBDIVISION OF LOT 1, AS SHOWN ON THE PLAT OF "BAMBERLIN VILLAGE 2 - UNIT NO. 2"  
IN BOOK 63, PAGE 65, OF PLATS IN THE CLARK COUNTY RECORDS OFFICE, LYING WITHIN SECTION 30,  
TOWNSHIP 30 SOUTH, RANGE 60 EAST, MERIDIAN, CITY OF LAS VEGAS, CLARK COUNTY, NEVADA.

**PHASING PLAN**



SCALE 1/4" = 10'  
DATE: 11/15/93  
DRAWN BY: [illegible]  
CHECKED BY: [illegible]  
APPROVED BY: [illegible]