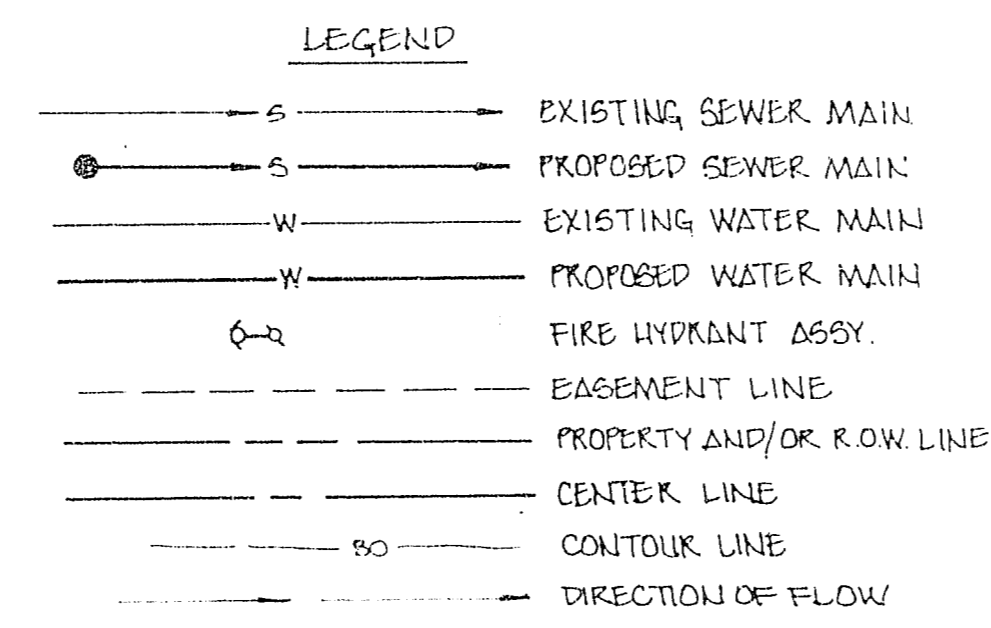


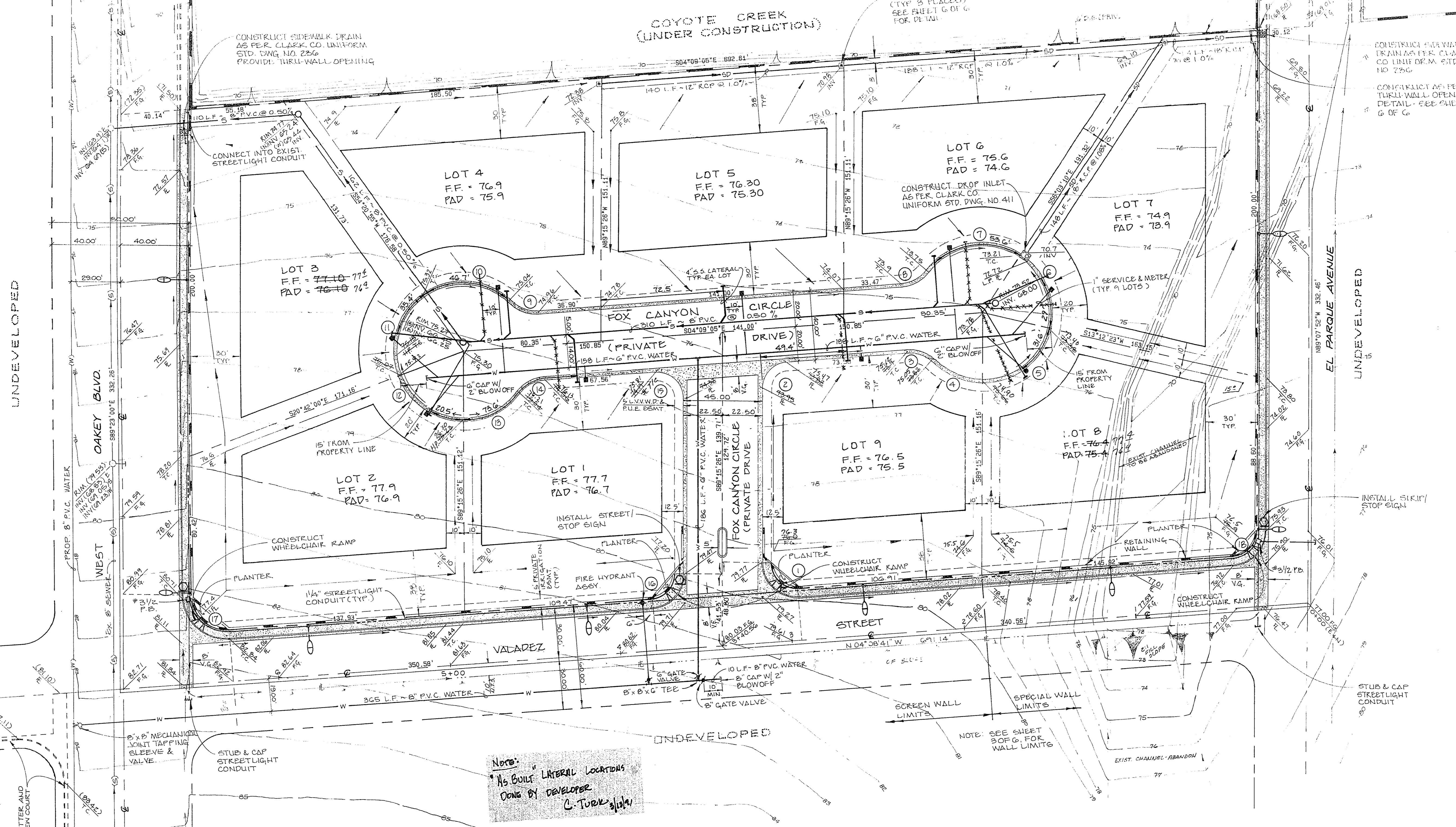
CURVE DATA TABLE

CURVE	RADIUS	TANGENT	LENGTH	DELTA
1	15.00'	16.34'	24.84'	94°53'15"
2	15.00'	13.77'	22.28'	85°06'21"
3	15.50'	8.85'	16.62'	48°49'38"
4	40.50'	16.34'	31.05'	43°55'59"
5	40.50'	32.53'	54.81'	77°32'12"
6	40.50'	27.97'	48.96'	69°15'33"
7	40.50'	38.38'	61.44'	86°55'32"
8	15.50'	8.85'	16.62'	48°49'38"
9	15.50'	8.85'	16.62'	48°49'38"
10	40.50'	34.18'	56.78'	80°19'38"
11	40.50'	31.10'	53.05'	75°02'55"
12	40.50'	27.61'	48.46'	68°33'26"
13	40.50'	20.51'	37.97'	53°43'16"
14	19.50'	8.85'	16.62'	48°49'38"
15	15.00'	16.34'	24.84'	94°53'15"
16	15.00'	13.77'	22.28'	85°06'21"
17	20.00'	21.74'	33.08'	94°45'41"
18	15.00'	13.74'	22.25'	84°59'11"



BENCHMARK
BLM BRASS CAP AT CENTER OF CHARLESTON BLVD AND BLADED DIRT ROAD (BUFFALO). APPROX. 600.00' WEST FROM CORNER SECTION CORNER. ELEV. = 2527.00'

PLEASE NOTE:
ALL ON-SITE SEWERS ARE PRIVATE. (TO BE MAINTAINED BY OWNERS)
C. TURNER 3/15/91



UNDEVELOPED

UNDEVELOPED

UNDEVELOPED

UNDEVELOPED

CONSTRUCT SIDEWALK DRAIN AS PER CLARK CO. UNIFORM STD. DWG. NO. 226. PROVIDE THRU-WALL OPENING.

CONNECT INTO EXIST. STREETLIGHT CONDUIT

CONSTRUCT WHEELCHAIR RAMP

Note:
AS-BUILT LATERAL LOCATIONS DONG BY DEVELOPER
C. TURNER 3/15/91

L.V.W.V.D. ESTIMATED QUANTITIES

8" x 8" MECHANICAL JOINT TAPPING SLEEVE	1 EA.
8" GATE VALVE	2 EA.
8" P.V.C. WATER LINE	375 L.F.
8" CAP W/12" BLOWOFF	1 EA.
6" P.V.C. WATERLINE	532 L.F.
1" METER (BY L.V.W.V.D.)	9 EA.
1" SERVICE LATERAL (PER L.V.W.V.D. STD. PLATE #1A)	9 EA.
6" CAP W/12" BLOWOFF	2 EA.

SINGLE FAMILY RESIDENTS
FIRE FLOW = 1500 G.P.M. @ 20 P.S.I.

STREET LIGHT NOTE:
ALL HAND HOLE COVERS MUST BE INSTALLED, POLE CAPS PAIRED, AND PULL BOX LIDS BOLTED DOWN PRIOR TO ENERGIZING CIRCUIT. ALL WIRE MUST HAVE THW INSULATION.



Call before you Dig.
1-800-227-2600

NOTE:
ALL UTILITIES SHOWN ARE BELIEVED TO BE ACCURATELY LOCATED, BUT THE ACCURACY AND COMPLETENESS OF UTILITY INFORMATION IS NOT GUARANTEED. FOR EXACT LOCATION OF ANY UTILITY SEE THE APPROPRIATE UTILITY OR GOVERNMENTAL AGENCY.

KJB NEVADA
SURVEYING - ENGINEERING - PLANNING
1500 BERRYVILLE MOUNTAIN ROAD
SUITE 200
LAS VEGAS, NEVADA 89134
PHONE: 794-1374

7" AS-BUILT SEWER LATERAL PLAN
GRADING & UTILITY PLAN
FOX CANYON ESTATES
FOR
MIKE GORDON

REVISIONS

NO.	DATE	DESCRIPTION
1	2/21/90	SEWER ALIGNMENT & PROFILE CHANGED. DIA. 8" x 8" x 12"
2	3/15/91	AS-BUILT SEWER LATERAL PLAN

PROJECT NO. 52-89
SHEET NO. 2 OF 6
DATE: MAR. 7, 91
DRAWN BY: D.P.
SCALE: 1" = 30'

LAS VEGAS VALLEY WATER DISTRICT DATE

As Built

3074 4087