

LOT A
UNIT NO. 1
GOLF COURSE

UTILITY LATERAL "AS-BUILT"
 CERBEREATION

STEPHEN P. GURLIDES, P.L.S.
 NEVADA CERT. NO. 9105



* = POWER & GAS SERVICE
 NOTE: ALL LOTS WILL BE
 CUSTOM HOMES. SEE
 SHEET 25 FOR UTILITY
 SERVICE CONSTRUCTION.



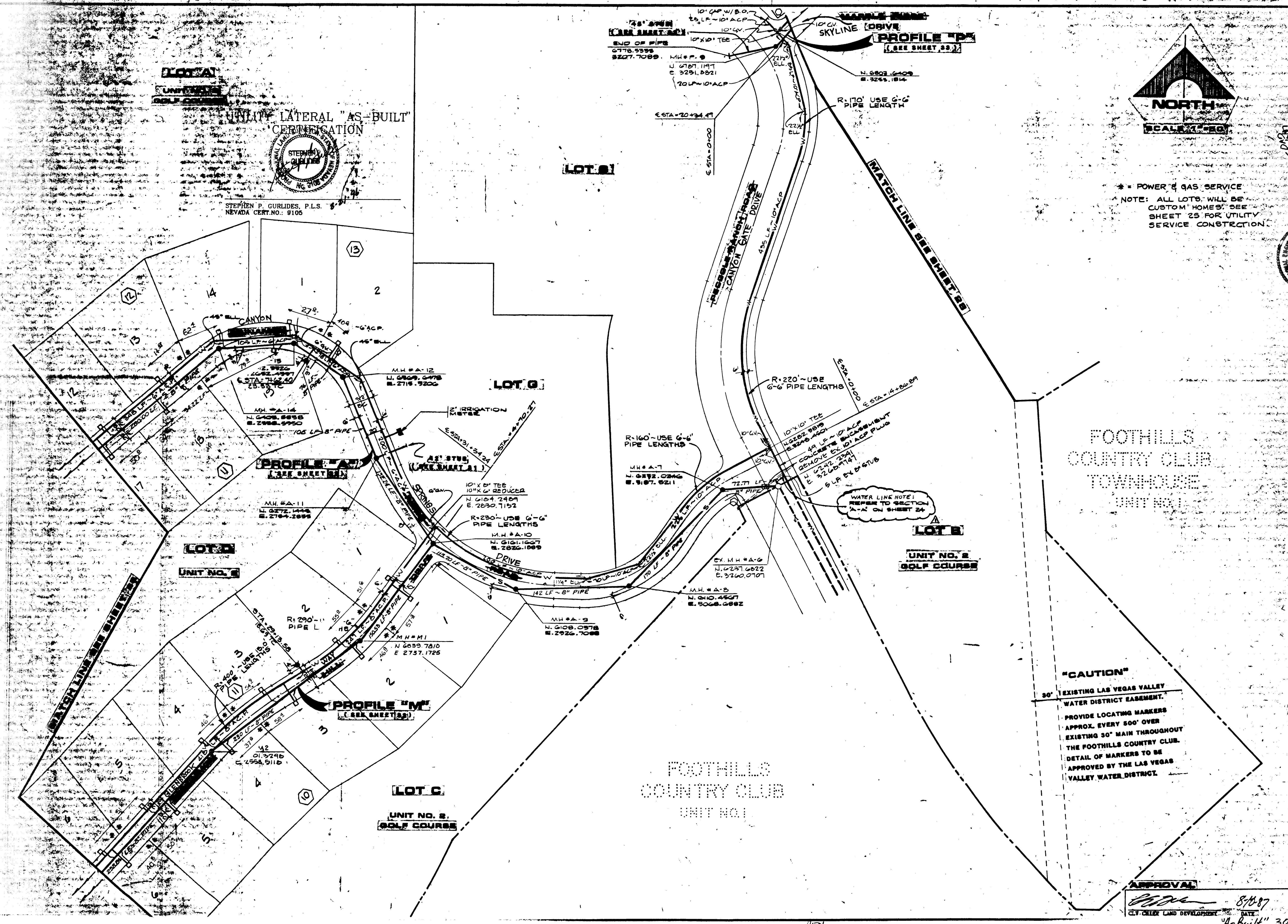
FOOTHILLS COUNTRY CLUB
 TOWNHOUSE
 UNIT NO. 1

G.C. WALLACE, INC.
 Engineering/Architecture
 155 SOUTH RAINBOW BOULEVARD, LAS VEGAS, NEVADA 89102

FOOTHILLS COUNTRY CLUB UNIT NO. 2
 UNIT NO. 2
 GOLF COURSE

SEWER AS - BUILT

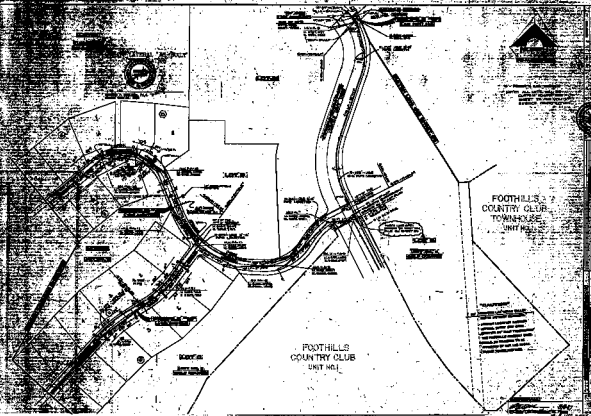
SHEET
27
 OF 36 SHEETS



"CAUTION"
 30' EXISTING LAS VEGAS VALLEY
 WATER DISTRICT EASEMENT.
 PROVIDE LOCATING MARKERS
 APPROX. EVERY 500' OVER
 EXISTING 30" MAIN THROUGHOUT
 THE FOOTHILLS COUNTRY CLUB.
 DETAIL OF MARKERS TO BE
 APPROVED BY THE LAS VEGAS
 VALLEY WATER DISTRICT.

APPROVAL
 [Signature]
 8/18/87
 CLY. CLERK LAND DEVELOPMENT

"As Built" 3071-1407-2



FOOTHILLS
COUNTRY CLUB
TOWNHOUSE
UNIT NO. 2

FOOTHILLS
COUNTRY CLUB
UNIT NO. 1

Notes:
1. All buildings shown on this plan are to be constructed in accordance with the approved plans and specifications for each building.

DRAWING NO. - 1000