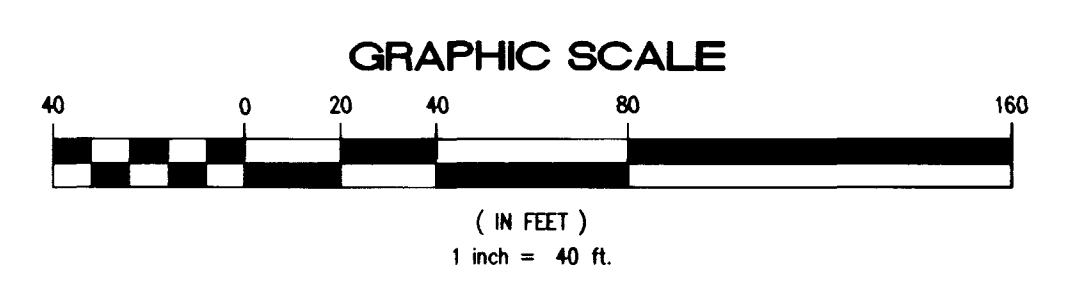
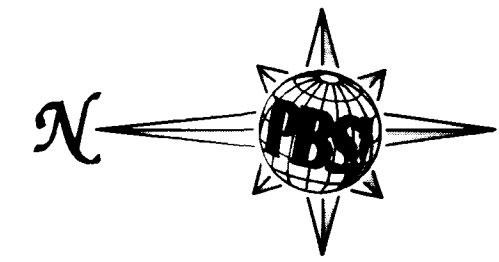
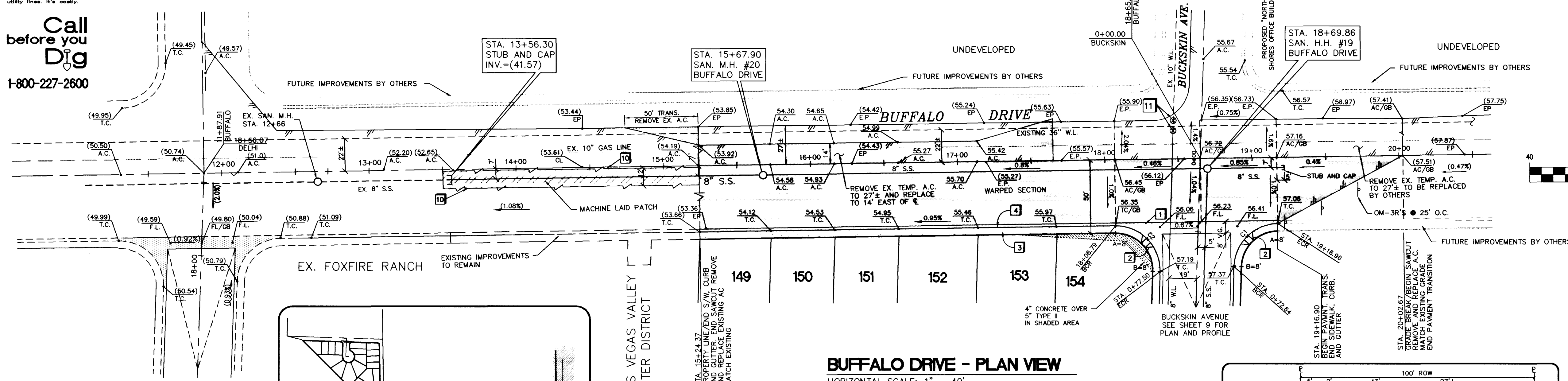


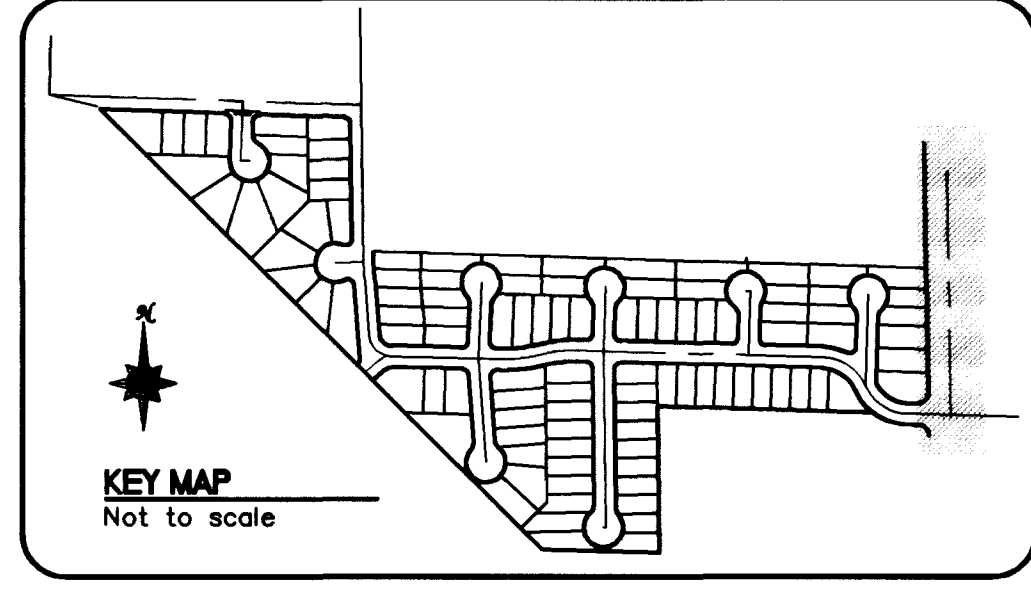
Call before you Dig  
1-800-227-2600



**BENCHMARK**  
BENCHMARK NO. 1 - STATION 04V001685  
RIVET & PLATE IN TOP OF CURB, SW RETURN  
CHEYENNE AVENUE AND BUFFALO DRIVE.  
ELEVATION = 2366.703 FEET (NGVD 1929)  
= 722.1134 METERS (NAVD 1988)

BACK OF CURB CURVE DATA

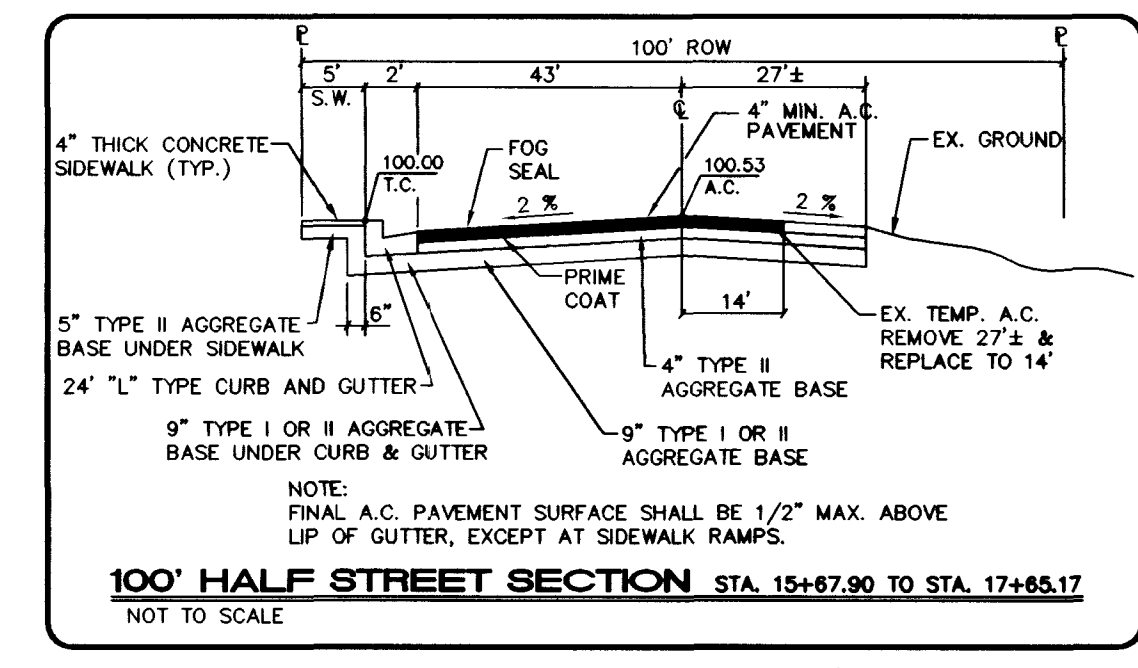
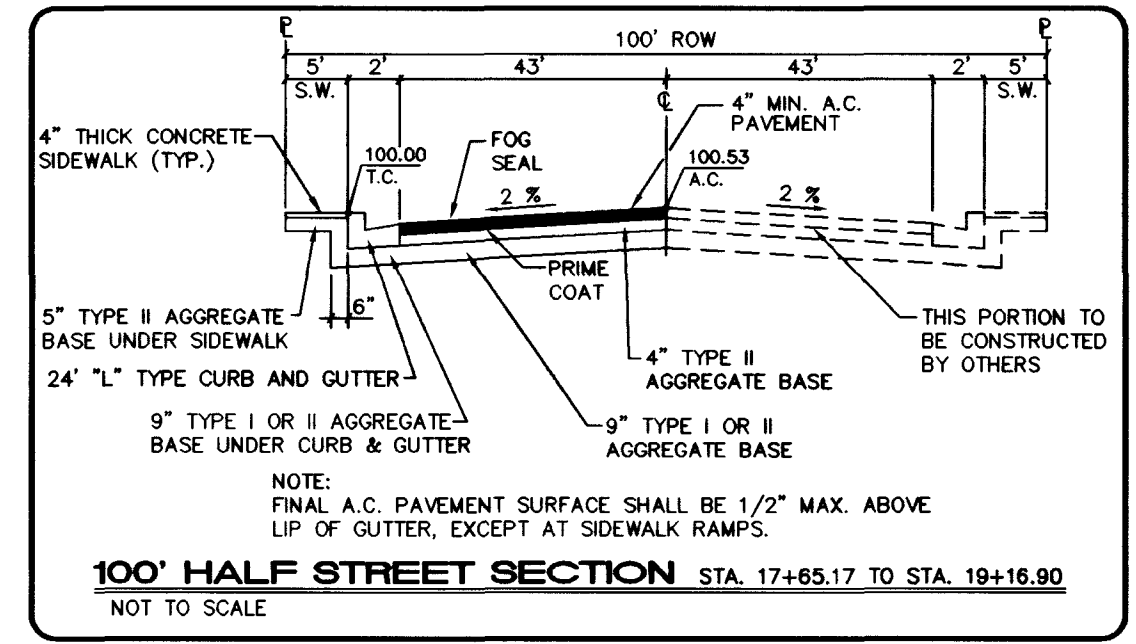
No.	RADIUS	DELTA	LENGTH	TANGENT
C1	30.00'	87°22'52"	45.80'	28.70'
C2	30.00'	92°31'53"	48.45'	31.36'



- SAWCUT, REMOVE AND REPLACE AC. BACKFILL TRENCH PER STD. DWG. NO. 504 (MACHINE LAID PATCH)
- NO. SITE OBSTRUCTION OVER 30" ABOVE TOP OF CURB IN SHADED AREA.

**NOTE:**  
CONTRACTOR TO FIELD VERIFY LOCATION AND ELEVATIONS. NOTIFY ENGINEER OF ANY DISCREPANCIES

**BUFFALO DRIVE - PLAN VIEW**  
HORIZONTAL SCALE: 1" = 40'

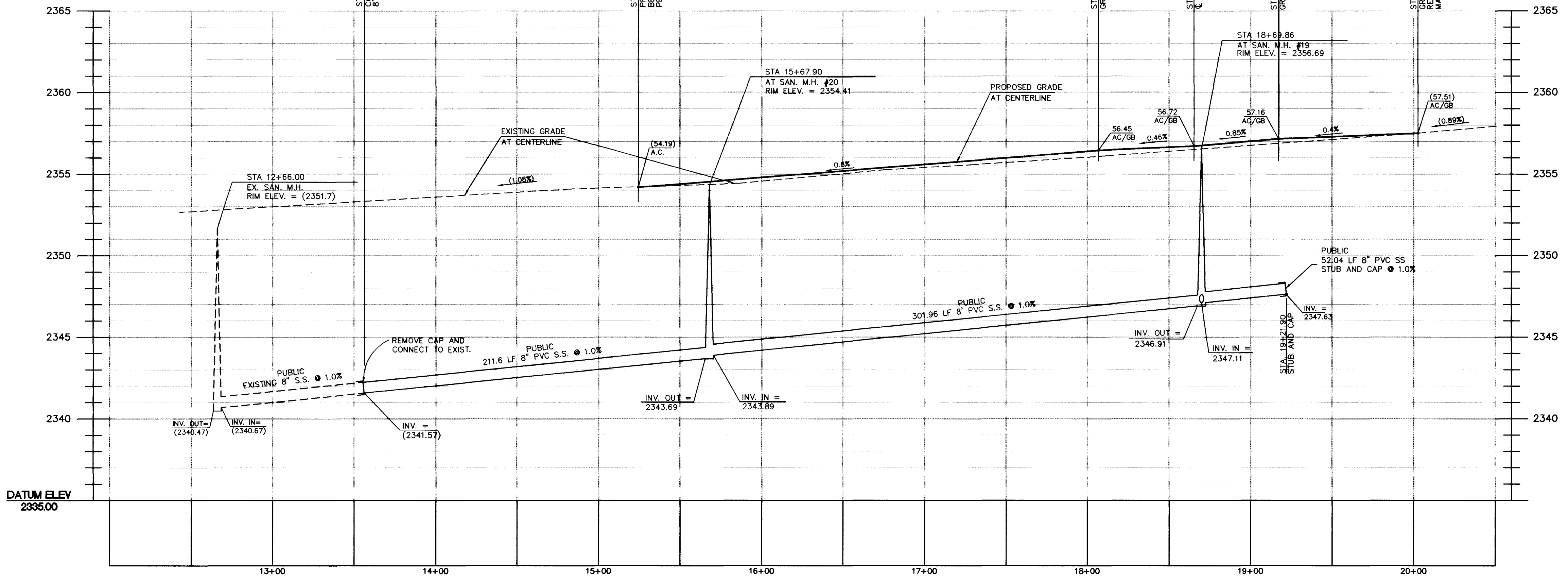


**CONSTRUCTION NOTES**

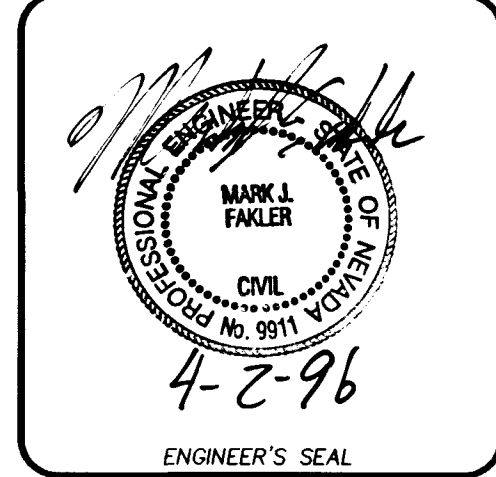
- 1 CONSTRUCT 8" CONCRETE VALLEY GUTTER PER CLARK COUNTY AREA STANDARD DWG. NO. 228.
- 2 CONSTRUCT SIDEWALK RAMP (CASE 1) PER CLARK COUNTY AREA STANDARD DWG. NO. 235. (TRANSITION LENGTHS A & B SHOWN ON PLAN, Z=3.5')
- 3 CONSTRUCT 5' WIDE CONCRETE SIDEWALK PER CLARK COUNTY AREA STANDARD DWG. NO. 234.
- 4 CONSTRUCT "L" TYPE CURB & GUTTER PER CLARK COUNTY AREA STANDARD DWG. NO. 216.
- 5 INSTALL TEMPORARY END OF ROAD MARKERS PER SEC. 3C-4 MUTCD.
- 10 SAWCUT, REMOVE AND REPLACE AC. BACKFILL TRENCH PER STD. DRAWING NO. 504.
- 11 ADJUST EXISTING UTILITIES TO NEW FINISH GRADE.

**GENERAL NOTES**

1. ADD 2300' TO PLAN VIEW AND PROFILE ELEVATIONS.
2. ALL STATIONING IS CENTERLINE STATIONING UNLESS OTHERWISE NOTED.
3. SEWER LENGTHS ARE FROM CENTER OF MANHOLE TO CENTER OF MANHOLE.



**BUFFALO DRIVE - PROFILE**  
HORIZONTAL SCALE: 1" = 40'  
VERTICAL SCALE: 1" = 4'



Job Number	Scale	Date	Drawn by	Checked by	File No.	Sheet Number	REVISIONS	Date	Appr.
7174.676	1" = 40'	04-02-98	SEC	MJE	676IMP	5 OF 6			

**FOXFIRE RANCH  
PHASE 3A  
BUFFALO DRIVE  
PLAN AND PROFILE**

POST, BUCKLEY, SCHULZ & JERMIGAN  
ENGINEERING - PLANNING - SURVEYING - CONSTRUCTION SERVICES

C:\DWG5\676\67634-05 Tue Apr 2 11:45:08 1998 Post, Buckley, Schulz & Jermigan - dtb

