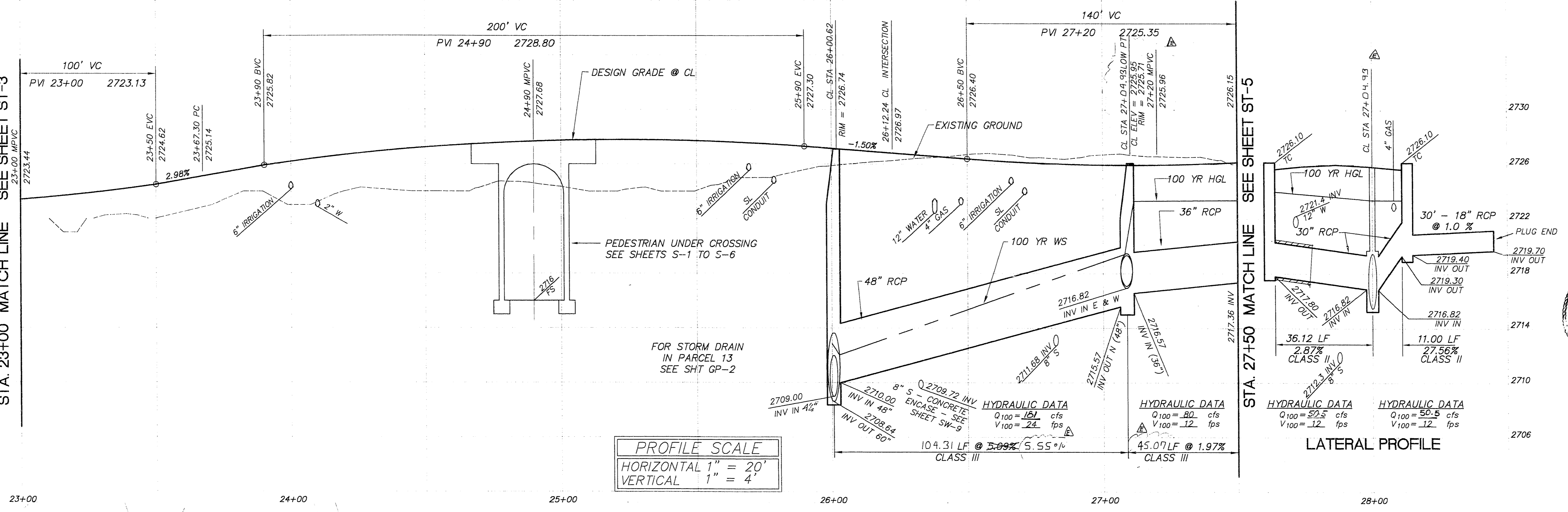


2730
2726
2722
2718
2714
2710
2706

STA. 23+00 MATCH LINE SEE SHEET ST-3

STA. 27+50 MATCH LINE SEE SHEET ST-5



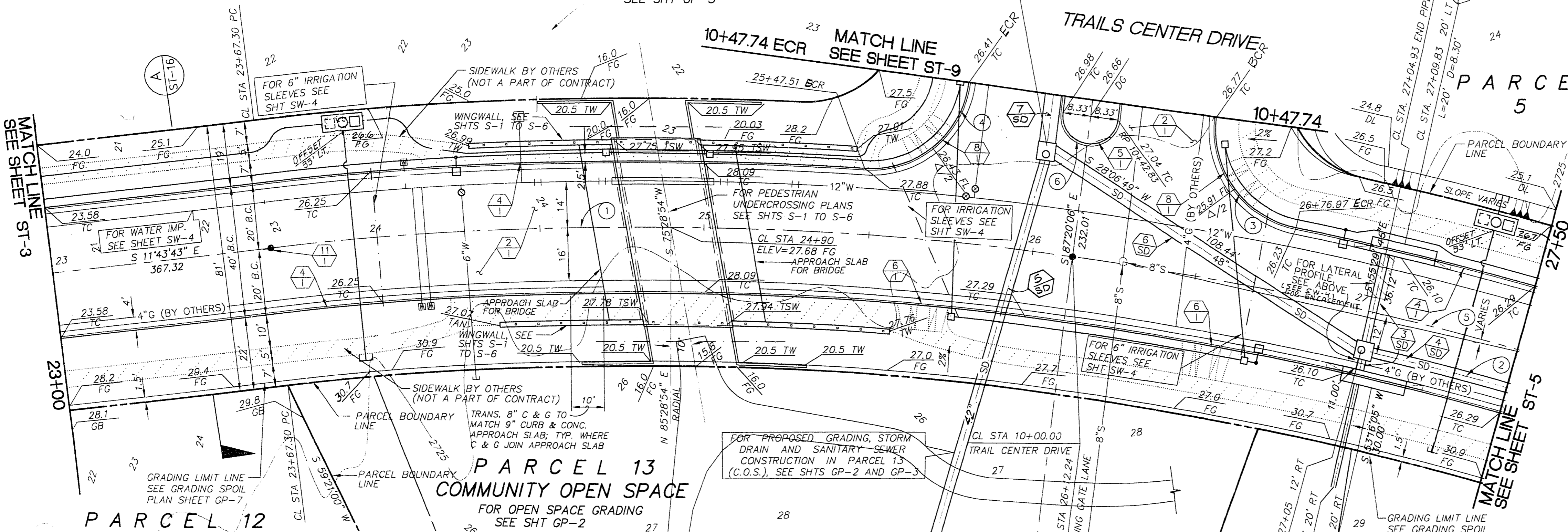
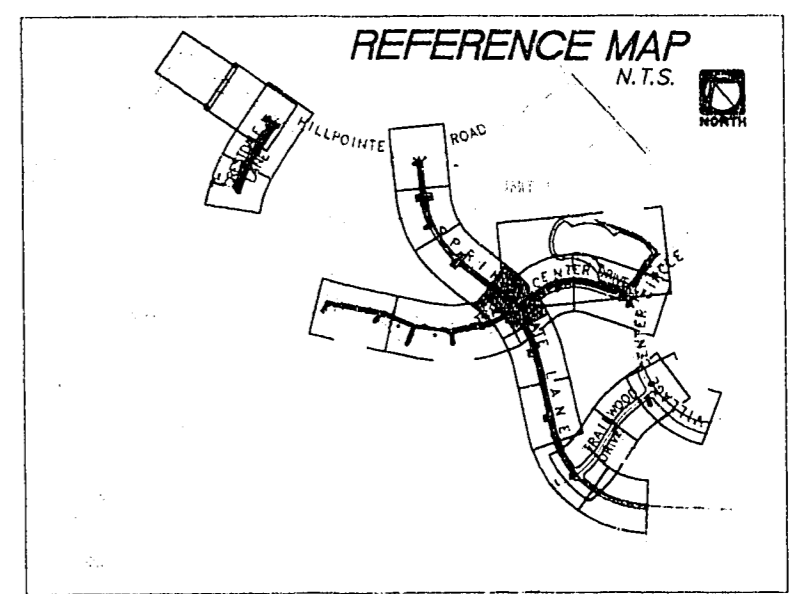
PROFILE SCALE
HORIZONTAL 1" = 20'
VERTICAL 1" = 4'

HYDRAULIC DATA
Q100 = 52.5 cfs
V100 = .12 fps

NOTE:
FINISH GRADE ELEVATIONS AND DAYLIGHT LINES ARE AT 50' STREET CENTERLINE STATIONS.

PARCEL 4
COMMUNITY OPEN SPACE
FOR OPEN SPACE GRADING
SEE SHT GP-5

BENCHMARK:
RIVET & PLATE IN TOP OF CURB NW SIDE OF TOWN CENTER DRIVE & SOUTH ROUNDABOUT ISLAND
ELEVATION = 2725.923
PER CITY OF LAS VEGAS DATUM
STATION : OLVD00
1954
SEE SHEET CG-3 FOR LOCATION.



- IMPROVEMENTS**
- 2 CONSTRUCT 2059 S.Y. OF 2" ASPHALT PAVEMENT WITH A 1" OVERLAY OVER 4" TYPE II AGGREGATE BASE.
 - 4 INSTALL 858 L.F. OF 8" MODIFIED "L" TYPE CURB AND GUTTER PER (1 ST-17)
 - 5 INSTALL 36 L.F. OF "A" TYPE ISLAND CURB AND GUTTER PER (S-50)
 - 8 CONSTRUCT DEPRESSED CURB FOR FUTURE SIDEWALK RAMPS PER (S-20)
 - 11 INSTALL TYPE III MONUMENT

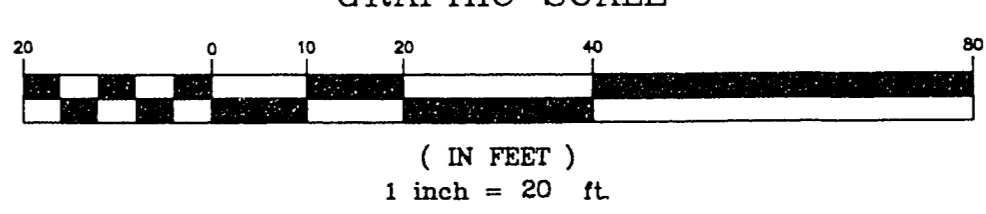
- STORM DRAIN**
- 3 SD INSTALL 47 L.F. OF 30" RCP STORM DRAIN.
 - 4 SD INSTALL 38 L.F. OF 36" RCP STORM DRAIN.
 - 6 SD INSTALL 109 L.F. OF 48" RCP STORM DRAIN.
 - 11 SD INSTALL 2 EA. OF TYPE III STORM DRAIN MANHOLE. (D1.05 S)
 - 18 SD INSTALL 1 EA. PLUG
 - 21 SD INSTALL 2 EA. OF TYPE "C" MODIFIED DROP INLET PER (D14 S) L=20'
 - 27 SD INSTALL 72 L.F. OF 42" RCP STORM DRAIN
 - 27 SD INSTALL 15 L.F. OF 60" RCP STORM DRAIN

STREET LIGHTING & ELECTRICAL
(SHOWN FOR REFERENCE ONLY; SEE SHEETS SL-1 - SL-4 FOR STREET LIGHTING INSTALLATION.)
(SEE NEVADA POWER CO. DWGS. FOR ELECTRICAL DISTRIBUTION.)

CURVE	DELTA	RADIUS	LENGTH	TANGENT	DESCRIPTION
1	14°23'38"	975.00'	244.94'	123.12'	CL TO INT
2	21°00'45"	963.00'	353.17'	178.59'	SD MH TO PT
3	86°11'46"	30.00'	45.13'	28.07'	BC
4	86°11'46"	30.00'	45.13'	28.07'	BC
5	24°43'57"	975.00'	420.87'	213.77'	CL INT TO PT
6	180°00'00"	8.33'	26.17'		ISBC

ISBC = ISLAND BACK OF CURB
BC = BACK OF CURB

Call before you Dig.
1-800-227-2600
UNDERGROUND SERVICE (USA)



RECORD DRAWINGS
RECORD INFORMATION PROVIDED BY FIELD CONTRACTOR
HOWARD HUGHES PROPERTIES
SUMMERLIN VILLAGE 7 - THE TRAILS
SPRING GATE LANE
PLAN AND PROFILE
STA 23+00 TO STA 27+50

THE KEITH COMPANIES
NEVADA
4025 S. INDUSTRIAL BL. LAS VEGAS, NV. 89103 (702) 735-0000

REV	DATE	DESCRIPTION	APPROVAL
1	10/9/92	80% COMPLETION	
2	2/03	90% COMPLETION	
3	4/03	100% COMPLETION	
4	4/02	FINAL	
5	8/14/03	REVISED STORM DRAIN LENGTHS, 10' STEPPES	

SHEET
ST-4
SHT 15 OF 69

11-1-17 1074-4271