

AMENDMENT RECORD

- DESCRIPTION OF CHANGE**
- ON SHEET 3 OF 4 ADDED BLOCK NOS. 1 AND 2
 - ON SHEET 4 OF 4 ADDED BLOCK NO. 1
 -

REFERENCE

a) Book 59 Page 2 of Plats
 b) File Page of Parcel Maps
 c) File Page of Surveys
 d) Certificate of Amendment Book of Official Records Inst. #

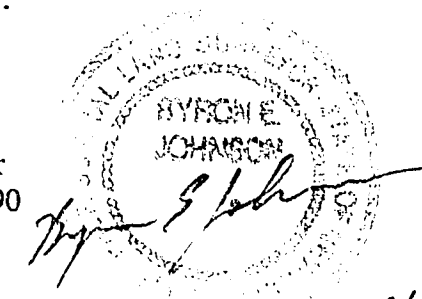
DATE: 12-2-93 BY: JBS

FINAL MAP OF SONOMA AT SUMMERLIN BY COLEMAN HOMES - PHASE 1

A PLANNED RESIDENTIAL DEVELOPMENT AND COMMON INTEREST COMMUNITY BEING A SUBDIVISION OF A PORTION OF LOT 2 IN BLOCK B OF "SUMMERLIN VILLAGE 2 - UNIT NO. 2" AS SHOWN BY MAP THEREOF ON FILE IN BOOK 50, PAGE 53 OF PLATS IN THE CLARK COUNTY RECORDER'S OFFICE, CLARK COUNTY, NEVADA LYING WITHIN SECTION 20, TOWNSHIP 20 SOUTH, RANGE 60 EAST, M.D.M., CITY OF LAS VEGAS, CLARK COUNTY NEVADA

I, Byron E. Johnson, a professional land surveyor registered in the State of Nevada, and present agent of G.C. Wallace, Inc., do hereby certify that Allen L. Hagen, P.L.S. No. 7755, as past agent for G.C. Wallace, Inc., and I have set the monuments and established the ties as shown herein.

Byron E. Johnson
 Professional Land Surveyor
 Nevada Certificate No. 9390



NOTE:

FOR SIDE PROPERTY LINES: SET CONCRETE NAIL AND BRASS TAG STAMPED PLS 7755 IN THE REAR WALL ON THE PROPERTY LINE PROJECTED. SET SAWCUT IN THE BACK OF CURB AT THE FRONT OF THE LOT ON THE PROPERTY LINE PROJECTED.

SET 2"x2" HUB AND TACK AT LOT CORNERS WHERE THERE IS NO BLOCK WALL. SET 2"x2" HUB AND TACK AT LOT CORNERS.

DIRECT VEHICULAR ACCESS TO TO CIELO VISTA AVENUE THROUGH COMMON AREA FROM ABUTTING LOTS IS PROHIBITED.

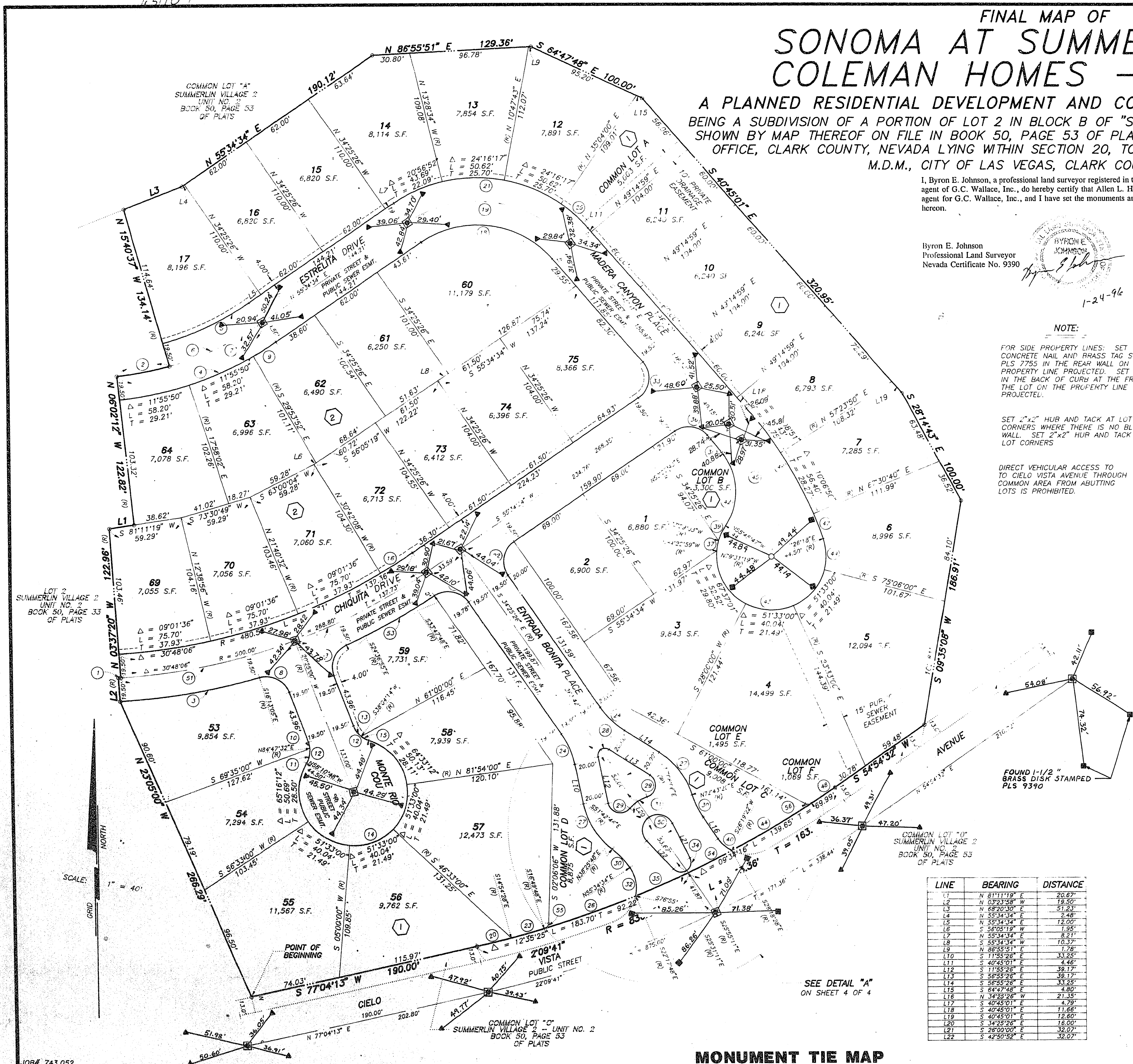
LEGEND

- SET 5/8" REBAR AND ALUM. CAP STAMPED PLS 7755 W/ REFERENCE TIE IN TOP OF CURB
- SET MONUMENTATION PER N.R.S. 27B.371
- 60 LOT NUMBER
TOTAL RESIDENTIAL LOTS = 36
TOTAL COMMON LOTS = 6
- CURVE NUMBER
- L1 LINE SEGMENT NUMBER
- SUBDIVISION BOUNDARY LINE
- - - STREET CENTERLINE
- - - PEDESTRIAN ACCESS CORRIDOR ESMT.
- 1/4" W 4.00'
- BLOCK NUMBER
- ▲ SET 2" ALUMINUM REFERENCE MARKER STAMPED PLS 7755
- SET 2" ALUMINUM REFERENCE MARKER STAMPED PLS 9390 UNLESS OTHERWISE NOTED.
- SET 5/8" REBAR AND ALCAP STAMPED PLS 9390
- POINT NOT SET DUE TO LANDSCAPING

CURVE	DELTA	RADIUS	LENGTH	TANGENT
1	97°12'24"	300.00'	1.94'	0.97'
2	260.00'	43.75'	21.82'	10.91'
3	12°49'07"	519.50'	116.23'	58.36'
4	26°31'14"	279.50'	138.48'	70.69'
5	18°44'49"	240.50'	78.69'	39.70'
6	18°44'49"	260.00'	85.07'	42.92'
7	26°23'14"	260.00'	128.82'	65.76'
8	85°48'09"	20.00'	23.95'	12.59'
9	74°31'34"	279.50'	22.08'	11.05'
10	15°19'32"	20.00'	5.31'	2.67'
11	37°01'40"	20.00'	13.92'	6.70'
12	27°11'12"	20.00'	18.23'	9.81'
13	31°30'46"	20.00'	11.00'	5.64'
14	284°28'24"	44.50'	220.94'	110.47'
15	204°32'26"	20.00'	3.66'	1.83'
16	23°43'18"	480.50'	31.21'	15.61'
17	89°22'22"	20.00'	31.20'	15.78'
18	47°40'25"	80.50'	117.56'	72.07'
19	31°40'23"	170.00'	146.04'	89.53'
20	71°58'41"	836.00'	28.86'	14.43'
21	87°49'23"	119.50'	172.51'	108.68'
22	90°00'00"	20.00'	31.42'	20.00'
23	71°55'20"	836.00'	28.05'	14.02'
24	12°30'00"	70.00'	27.49'	13.92'
25	14°10'59"	119.50'	29.58'	14.87'
26	05°28'01"	836.00'	79.77'	39.91'
27	35°38'46"	65.00'	44.98'	23.33'
28	135°00'00"	6.00'	14.14'	14.49'
29	129°42'20"	10.00'	22.65'	21.34'
30	17°08'46"	70.00'	20.95'	10.55'
31	18°44'49"	20.00'	16.40'	8.22'
32	4°29'48"	30.00'	24.87'	13.20'
33	96°19'35"	20.00'	33.62'	22.34'
34	167°00'00"	20.00'	23.00'	11.51'
35	0°11'23"	836.00'	47.03'	23.52'
36	83°49'25"	20.00'	29.21'	17.91'
37	105°33'56"	44.50'	8.46'	4.23'
38	03°07'44"	280.50'	15.32'	7.66'
39	17°43'16"	44.50'	13.76'	6.94'
40	28°51'12"	30.00'	15.32'	7.66'
41	03°07'44"	300.00'	16.38'	8.19'
42	71°51'30"	50.00'	62.71'	36.23'
43	44°50'55"	179.50'	180.81'	110.40'
44	05°11'48"	836.00'	25.82'	12.91'
45	48°05'58"	120.65'	101.28'	53.84'
46	22°11'17"	319.50'	123.73'	62.65'
47	07°53'38"	210.00'	21.90'	10.95'
48	01°35'12"	836.00'	23.15'	11.58'
49	44.50'	44.50'	23.99'	12.59'
50	126°50'25"	13.00'	44.66'	22.33'
51	17°01'02"	500.00'	148.50'	74.80'
52	14°00'28"	300.00'	122.24'	61.42'
53	09°10'53"	812.00'	81.25'	41.71'
54	02°47'17"	836.00'	40.68'	20.34'
55	71°04'06"	5.00'	6.20'	3.07'
56	62°30'16"	5.00'	5.45'	3.03'

LINE	BEARING	DISTANCE
L1	N 81°11'19" E	20.67'
L2	N 03°23'58" W	19.50'
L3	N 88°03'30" E	51.23'
L4	N 55°34'34" E	2.48'
L5	N 55°34'34" E	12.00'
L6	S 56°05'19" W	1.95'
L7	N 55°34'34" E	8.21'
L8	S 55°34'34" W	10.37'
L9	N 86°55'51" E	1.79'
L10	S 11°53'20" E	33.25'
L11	S 40°45'01" E	4.46'
L12	S 11°55'26" E	39.17'
L13	S 56°55'19" W	39.17'
L14	S 56°55'26" E	33.25'
L15	S 64°47'58" E	4.80'
L16	N 34°25'26" W	21.35'
L17	S 40°45'01" E	4.79'
L18	S 40°45'01" E	11.66'
L19	S 40°45'01" E	12.60'
L20	S 34°25'26" E	16.00'
L21	S 26°00'00" E	32.07'
L22	S 42°50'52" E	32.07'

MONUMENT TIE MAP



SCALE: 1" = 40'

SEE DETAIL "A" ON SHEET 4 OF 4