

GOWAN / FORT APACHE PHASE 6C

SITUATED IN THE NORTHEAST QUARTER (NE 1/4) OF THE NORTHWEST QUARTER (NW 1/4)
OF SECTION 8, TOWNSHIP 20 SOUTH, RANGE 60 EAST, M.D.M., CITY OF LAS VEGAS, CLARK COUNTY, NEVADA.

MONUMENTATION TIE MAP

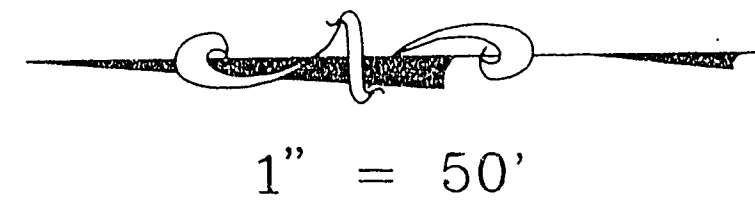
NOTES:

1) PURSUANT TO NRS 278.371 ALL REAR LOT CORNERS SHALL BE SET WITH A NAIL AND TAG "PLS 8421" ON BLOCK WALLS AND ALL FRONT OR SIDE LOT CORNERS ADJOINING RIGHT-OF-WAY SHALL BE MARKED BY THE SAWCUTTING OF THE BACK OF CURBS ON THE PROLONGATION OF THE PROPERTY LINES.

I, STEPHEN P. GURLIDES, A PROFESSIONAL LAND SURVEYOR IN THE STATE OF NEVADA, DO HEREBY CERTIFY THAT THE MONUMENTS HAVE BEEN SET AND THE TIE DISTANCE ESTABLISHED AS SHOWN HEREON. THIS SURVEY WAS COMPLETED ON

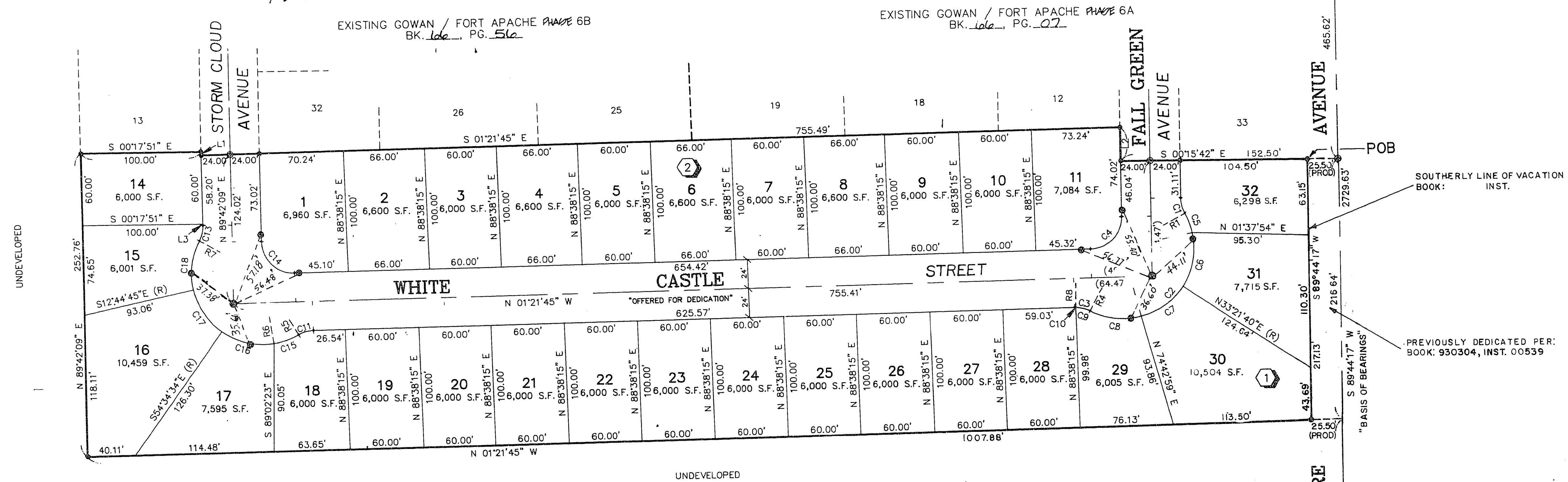
STEPHEN P. GURLIDES
NEVADA CERTIFICATION NO. 9105

4.30.96



LEGEND

- 2 LOT NUMBER / 30 RESIDENTIAL LOTS
- P.O.B. POINT OF BEGINNING
- (3) BLOCK NUMBER
- L4 COURSE NUMBER
- C5 CURVE NUMBER
- R7 RADIAL LINE NUMBER
- FOUND TYPE III MON., "VTN, PLS 9105"
- SET TYPE III MON., "VTN, PLS 8421"
- (R) RADIAL LINE
- △ FOUND MONUMENT AS INDICATED
- SET NAIL & TAG "PLS 8421" OR SAWCUT BACK OF CURB ON PROPERTY LINE PROLONGATION PER NOTE 1



COURSE TABLE

LINE	DIRECTION	DISTANCE
L1	S 89°42'09" W	2.85'
L2	S 89°44'18" W	27.98'
L3	S 89°42'09" W	1.06'
L4	S 89°44'18" W	95.58'

RADIAL LINE TABLE

LINE	DIRECTION	DESCR.
R1	N 29°02'32" W	PRC
R2	N 12°08'12" W	
R3	N 75°11'29" E	
R4	S 62°34'55" E	PRC
R5	N 59°51'25" E	PRC
R6	N 81°18'11" E	
R7	S 28°28'58" W	PRC
R8	S 89°15'23" E	

CURVE TABLE

CURVE	RADIUS	LENGTH	TANGENT	DELTA
C1	26.50'	13.31'	6.80'	28°46'50"
C2	58.50'	149.54'	194.13'	146°27'36"
C3	26.50'	13.31'	6.80'	28°46'50"
C4	26.50'	41.12'	26.00'	88°53'57"
C5	58.50'	17.26'	8.89'	16°54'20"
C6	58.50'	46.45'	24.53'	45°29'56"
C7	58.50'	42.71'	22.36'	41°49'49"
C8	58.50'	43.11'	22.59'	42°13'36"
C9	26.50'	12.34'	6.28'	26°40'27"
C10	26.50'	0.97'	0.49'	02°06'22"
C11	26.50'	13.31'	6.80'	28°46'50"
C12	58.50'	151.75'	208.30'	148°37'33"
C13	26.50'	13.31'	6.80'	28°46'50"
C14	26.50'	42.12'	27.00'	91°03'54"
C15	58.50'	21.80'	11.08'	21°28'46"
C16	58.50'	43.05'	23.71'	44°07'14"
C17	58.50'	42.71'	22.36'	41°49'49"
C18	58.50'	42.10'	22.01'	41°13'44"

ACT. DATE	BY	REVISION
1	5/17/93 MRO	REVISE LOTS 15-16, BLOCK 1; 6000 S.F. MIN
2	9/30/93 MRO	REVISE LOTS 14-32, BLOCK 1; NEW L/O
3	12/30/93 MRO	REVISE TO RECORD IN CITY OF LAS VEGAS
4	4/18/95 ARR	REVISE BNDY TO REFLECT 51' ROW ON GILMORE AVE

W.O. 4182-6C
SHEET 2 OF 2
MRO

BOOK 67 PAGE 57
058-4214-6C