

950228

01338

GOWAN / FORT APACHE PHASE 6B

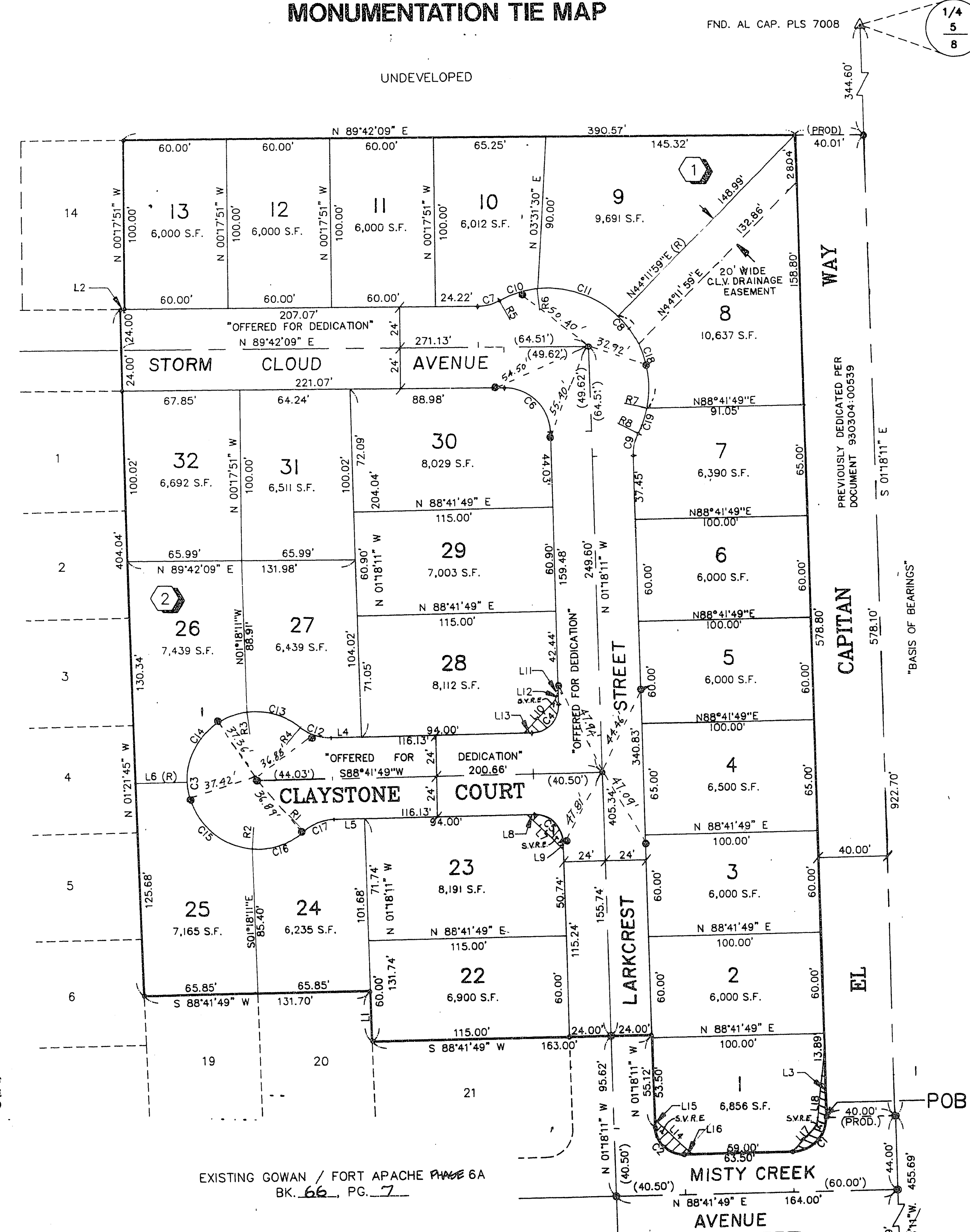
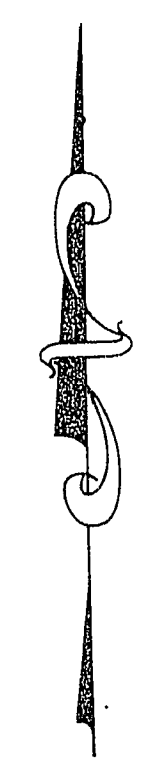
SITUATED IN THE NORTHEAST QUARTER (NE 1/4) OF THE NORTHWEST QUARTER (NW 1/4) OF SECTION 8, TOWNSHIP 20 SOUTH, RANGE 60 EAST, M.D.M., CITY OF LAS VEGAS, CLARK COUNTY, NEVADA.

MONUMENTATION TIE MAP

LEGEND

- 2 LOT NUMBER / 24 RESIDENTIAL LOTS
- T.P.O.B. TRUE POINT OF BEGINNING
- ③ BLOCK NUMBER
- L4 COURSE NUMBER
- C5 CURVE NUMBER
- R7 RADIAL LINE NUMBER
- ⊙ FOUND TYPE III MON., "VTN, PLS 8421"
- SET TYPE III MON., "VTN, PLS 9105"
- (R) RADIAL LINE
- △ FOUND MONUMENT AS INDICATED
- SET NAIL & TAG "PLS. 8421" OR SAWCUT BACK OF CURB ON PROPERTY LINE | PROLONGATION, PER NOTE 1.
- SVRE. SIGHT VISIBILITY RESTRICTION EASEMENT

1" = 40'



NOTES:

- 1) PURSUANT TO NRS 278.371 ALL REAR LOT CORNERS SHALL BE SET WITH A NAIL AND TAG "PLS 8421" ON BLOCK WALLS AND ALL FRONT OR SIDE LOT CORNERS ADJOINING RIGHT-OF-WAY SHALL BE MARKED BY THE SAWCUTTING OF THE BACK OF CURBS ON THE PROLONGATION OF THE PROPERTY LINES.
- 2) DIRECT VEHICULAR ACCESS TO EL CAPITAN WAY FROM ABUTTING LOTS IS PROHIBITED.

COURSE TABLE

LINE	DIRECTION	DISTANCE
L1	N01°18'11"W	30.06'
L2	N89°42'09"E	2.86'
L3	N01°18'11"W	36.11'
L4	N88°41'49"E	17.63'
L5	N88°41'49"E	17.63'
L6	S88°41'49"W	29.67'
L7	S46°18'11"E	29.70'
L8	S88°41'49"W	4.50'
L9	S01°18'11"E	4.50'
L10	N43°41'49"E	26.98'
L11	N10°05'10"E	9.72'
L12	N01°18'11"W	12.11'
L13	S88°41'49"W	4.50'
L14	S46°18'11"E	29.70'
L15	S01°18'11"E	4.50'
L16	S88°41'49"W	4.50'
L17	S42°17'59"W	22.30'
L18	N05°17'48"E	40.23'

RADIAL LINE TABLE

LINE	DIRECTION	PRC
R1	S42°23'19"E	
R2	S04°37'53"W	
R3	N07°25'35"W	
R4	N39°46'56"E	PRC
R5	N29°04'41"W	PRC
R6	N06°04'35"W	
R7	S78°05'07"E	
R8	S62°31'22"E	PRC

CURVE TABLE

CURVE	RADIUS	LENGTH	TANGENT	DELTA
C1	20.00'	31.42'	20.00'	90°00'00"
C2	16.50'	25.92'	16.50'	90°00'00"
C3	40.50'	185.32'	46.45'	262°10'15"
C4	16.50'	25.92'	16.50'	90°00'00"
C5	16.50'	25.92'	16.50'	90°00'00"
C6	26.50'	41.16'	26.04'	88°59'40"
C7	26.50'	13.31'	6.80'	28°48'50"
C8	58.50'	149.64'	194.72'	146°33'20"
C9	26.50'	13.31'	6.80'	28°48'50"
C10	58.50'	23.49'	11.90'	23°00'06"
C11	58.50'	51.33'	27.45'	50°16'34"
C12	26.50'	19.00'	9.93'	41°05'07"
C13	40.50'	33.37'	17.70'	47°12'31"
C14	40.50'	59.29'	36.39'	83°52'36"
C15	40.50'	59.42'	36.51'	84°03'55"
C16	40.50'	33.24'	17.62'	47°01'12"
C17	26.50'	19.00'	9.93'	41°05'07"
C18	58.50'	58.93'	32.24'	57°42'55"
C19	58.50'	15.89'	7.99'	15°33'45"

I, STEPHEN P. GURLIDES, A PROFESSIONAL LAND SURVEYOR IN THE STATE OF NEVADA, DO HEREBY CERTIFY THAT THE MONUMENTS HAVE BEEN SET AND THE DISTANCE ESTABLISHED AS SHOWN HEREON. THIS SURVEY WAS COMPLETED ON 5-13-96

STEPHEN P. GURLIDES
NEVADA CERTIFICATION NO. 9105
5-13-96

EXISTING GOWAN / FORT APACHE PHASE 6A BK. 66, PG. 7

ACT DATE	BY	REVISION
7 12/19/94	VCL	REVISED CLAYSTONE COURT ALIGNMENT & 10' EASEMENT
6 8/30/94	JPD	REVISE R/W IN BLK 1 TO 10' - ADJ. LOT LINES
1 5/17/93	MRO	REVISE LOTS 7-8, BLOCK 1; 6000 S.F. MIN.
2 9/30/93	MRO	REVISE LOTS 8-13, BLOCK 1; ADD DRAINAGE EASEMENT
4 11/16/93	MRO	REVISE DRAINAGE EASEMENT TO 20' WIDTH
5 12/29/93	MRO	REVISE TO RECORD IN CITY OF LAS VEGAS

W.O. 4182-6B
SHEET 2 OF 2
MRO

11-6-97 Book 66 Page 56
058-4214-6B