

960315

01140

GOWAN / FORT APACHE PHASE 5 - UNIT F

A PORTION OF THE SOUTHWEST QUARTER (SW 1/4) OF THE NORTHWEST QUARTER (NW 1/4) OF SECTION 8, TOWNSHIP 20 SOUTH, RANGE 60 EAST, M.D.M., CITY OF LAS VEGAS, CLARK COUNTY, NEVADA

MONUMENTATION TIE MAP

FUTURE DIAMOND RIDGE UNIT 7

COURSE TABLE

LINE	DIRECTION	DISTANCE
L1	S89°44'18"W	14.42'
L2	S10°52'57"W	24.17'
L3	S29°13'49"E	41.57'
L4	S83°15'37"E	34.87'
L5	S45°15'42"E	21.57'
L6	N44°44'18"E	21.75'
L7	N81°51'48"E	30.09'
L8	N89°44'18"E	30.18'
L9	S00°15'42"E	4.50'
L10	S00°15'42"E	4.50'
L11	S89°44'18"W	34.86'

RADIAL LINE TABLE

LINE	DIRECTION	DISTANCE
R1	S45°29'21"W	PRC
R2	N77°49'40"E	PRC
R3	N26°20'35"E	PRC
R4	S44°38'54"W	PRC
R5	N46°00'45"W	PRC
R6	S50°37'41"E	PRC
R7	S69°59'47"W	PRC
R8	N61°50'05"E	PRC
R9	S16°26'17"W	PRC

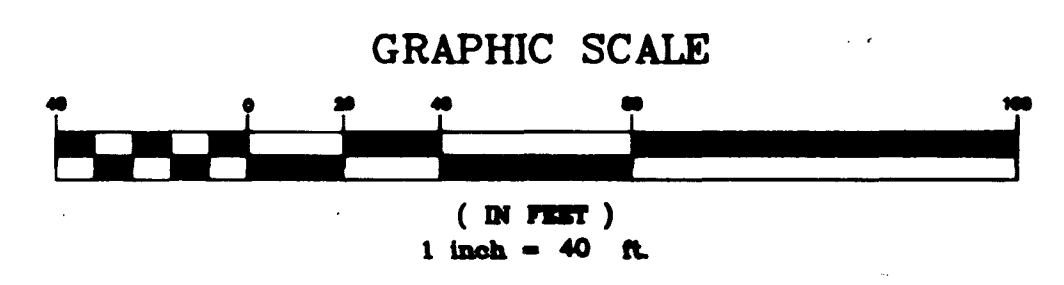
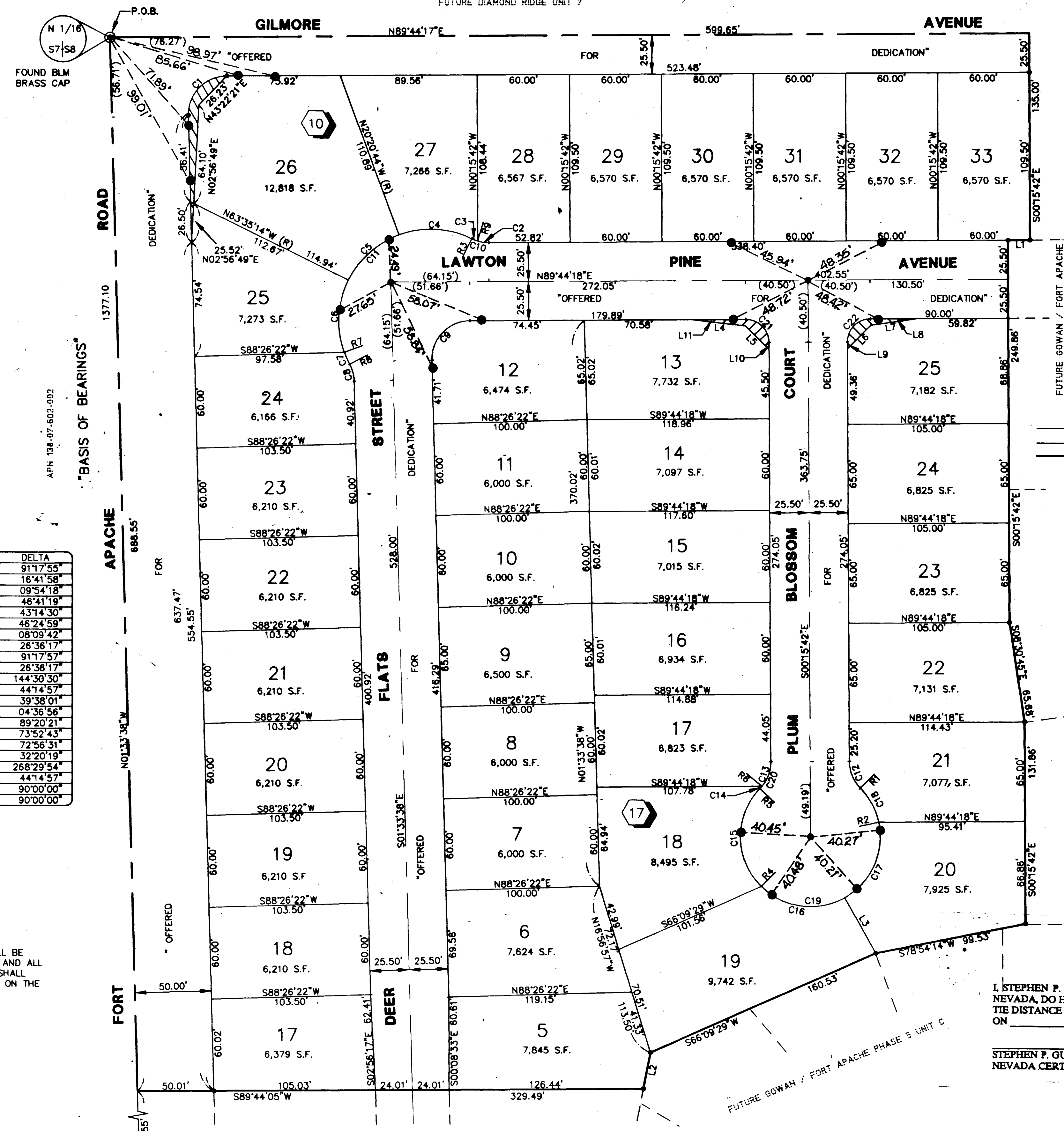
CURVE TABLE

CURVE	RADIUS	LENGTH	TANGENT	DELTA
C1	25.00'	39.84'	25.57'	91°17'55"
C2	25.00'	7.29'	3.67'	16°41'58"
C3	25.00'	4.32'	2.17'	09°54'18"
C4	60.00'	48.89'	25.90'	46°41'19"
C5	60.00'	45.28'	23.78'	43°14'30"
C6	60.00'	48.61'	25.73'	46°24'59"
C7	60.00'	8.55'	4.28'	08°09'42"
C8	25.00'	11.61'	5.91'	26°36'17"
C9	25.00'	39.84'	25.57'	91°17'57"
C10	25.00'	11.61'	5.91'	26°36'17"
C11	60.00'	151.33'	187.49'	144°30'30"
C12	25.00'	19.31'	10.16'	44°14'57"
C13	25.00'	17.29'	9.01'	39°38'01"
C14	25.00'	2.01'	1.01'	04°36'56"
C15	45.50'	70.95'	44.98'	89°20'21"
C16	45.50'	58.67'	34.21'	73°52'43"
C17	45.50'	57.93'	33.83'	72°56'31"
C18	45.50'	25.68'	13.19'	32°20'19"
C19	45.50'	213.22'	46.71'	268°29'54"
C20	25.00'	19.31'	10.16'	44°14'57"
C21	15.00'	23.56'	15.00'	90°00'00"
C22	15.00'	23.56'	15.00'	90°00'00"

NOTES

- PURSUANT TO NRS 278.371 ALL REAR LOT CORNERS SHALL BE SET WITH A NAIL AND TAG "P.L.S. 9105" ON BLOCK WALL AND ALL FRONT OR SIDE LOT CORNERS ADJOINING RIGHT-OF-WAY SHALL BE MARKED BY THE SAWCUTTING OF THE BACK OF CURBS ON THE PROLONGATION OF THE PROPERTY LINES.
- DIRECT VEHICULAR ACCESS TO FORT APACHE ROAD FROM ABUTTING LOTS IS PROHIBITED.

ACT	DATE	BY	REVISION
2	6/2/95	TZ	ADD SRVE TO LOT 26, BLK 10
1	4/17/95	VCL	GLMORE AVENUE WIDTH TO 51' FROM 60'



- LEGEND**
- P.O.B. POINT OF BEGINNING
 - 15 LOT NUMBER / RESIDENTIAL = 38
 - 2 BLOCK NUMBER
 - R1 RADIAL LINE NUMBER
 - L3 COURSE NUMBER
 - C2 CURVE NUMBER
 - FOUND MONUMENT AS DESCRIBED
 - SET TYPE III MONUMENT - "VTN PLS 9105"
 - SET NAIL & BRASS TAG "PLS 9105" OR SAWCUT TOP OF CURB ON PROLONGATION OF PROPERTY LINES, PER NOTE 1
 - S.F. SQUARE FEET
 - CENTERLINE
 - LOT LINE
 - BOUNDARY LINE
 - SIGHT VISIBILITY RESTRICTION EASEMENT PER LAS VEGAS SUBDIVISION ORDINANCE AS SHOWN ON STANDARD DRAWING #404.1600.

I, STEPHEN P. GURLIDES, A PROFESSIONAL LAND SURVEYOR IN THE STATE OF NEVADA, DO HEREBY CERTIFY THAT THE MONUMENTS HAVE BEEN SET AND THE TIE DISTANCE ESTABLISHED AS SHOWN HEREON. THIS SURVEY WAS COMPLETED ON

STEPHEN P. GURLIDES
NEVADA CERTIFICATION NO. 910

18-4-97

W.O. 4182-5F
SHEET 2 OF 3
VCL

BOOK 72 PAGE 68
058-4214-5F

