

# GOWAN / FORT APACHE - PHASE 5 UNIT E

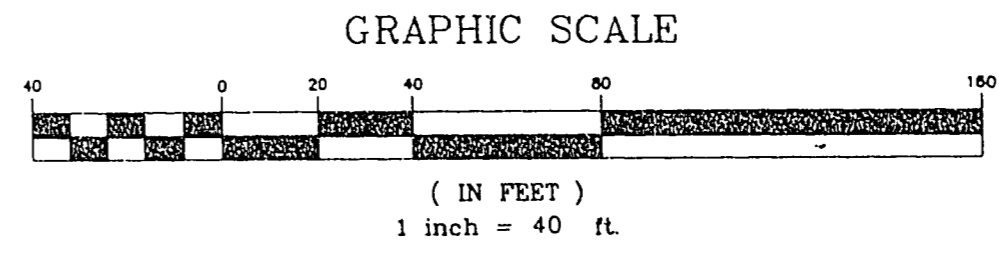
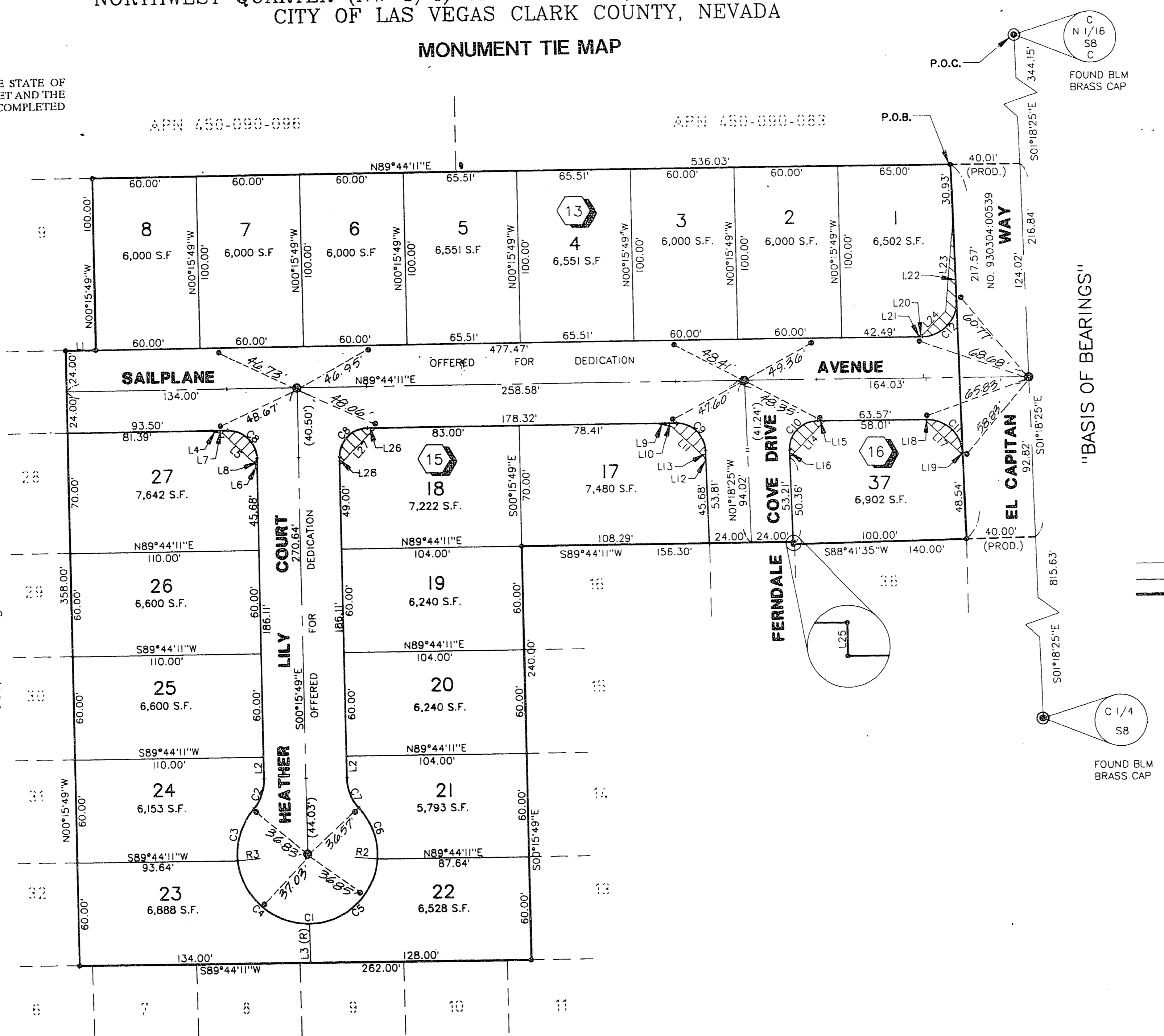
A PORTION OF THE SOUTHEAST QUARTER (SE 1/4) OF THE NORTHWEST QUARTER (NW 1/4) OF SECTION 8, T. 20 S., R. 60 E., M.D.M., CITY OF LAS VEGAS CLARK COUNTY, NEVADA

## MONUMENT TIE MAP

I, BRETT K. JEFFERSON, A PROFESSIONAL LAND SURVEYOR IN THE STATE OF NEVADA, DO HEREBY CERTIFY THAT THE MONUMENTS HAVE BEEN SET AND THE TIE DISTANCE ESTABLISHED AS SHOWN HEREON. THIS SURVEY WAS COMPLETED ON June 23, 1995

*Brett K. Jefferson*  
BRETT K. JEFFERSON  
NEVADA CERTIFICATION NO. 8421

*Brett K. Jefferson*  
6-30-95



- LEGEND**
- P.O.C. POINT OF COMMENCEMENT
  - P.O.B. POINT OF BEGINNING
  - 15 LOT NUMBER / RESIDENTIAL = 20 TOTAL = 20
  - 2 BLOCK NUMBER
  - R1 RADIAL LINE NUMBER
  - L3 COURSE NUMBER
  - C2 CURVE NUMBER
  - FOUND MONUMENT AS DESCRIBED
  - SET TYPE III MONUMENT - AL. CAP "VTN PLS 8421"
  - SET NAIL & BRASS TAG "PLS 8421" OR SAWCUT TOP OF CURB ON PROLONGATION OF PROPERTY LINES, PER NOTE 1
  - S.F. SQUARE FEET
  - CENTERLINE
  - LOT LINE
  - BOUNDARY LINE
  - ▨ SIGHT VISIBILITY RESTRICTION EASEMENT PER PER CITY OF LAS VEGAS STANDARD DRAWING # 404.1600.

### COURSE TABLE

LINE	DIRECTION	DISTANCE
L1	N89°44'11"E	18.33'
L2	N00°15'49"W	12.61'
L3	N00°15'49"W	22.86'
L4	S78°52'27"E	9.72'
L5	S45°15'49"E	25.28'
L6	S15°10'09"E	4.69'
L7	S89°44'11"W	12.11'
L8	S00°15'49"E	7.82'
L9	S78°55'00"E	9.75'
L10	S89°44'11"W	12.41'
L11	S45°47'07"E	25.51'
L12	N16°08'30"W	4.71'
L13	S01°18'25"E	8.13'
L14	N44°12'53"E	29.43'
L15	N89°44'11"E	4.20'
L16	S01°18'25"E	4.20'
L17	S45°47'07"E	29.97'
L18	S89°44'11"W	1.36'
L19	S01°18'25"E	1.36'
L20	S74°45'50"W	4.67'
L21	S89°44'11"W	3.96'
L22	N01°18'25"W	48.72'
L23	N05°18'20"E	54.62'
L24	N44°12'53"E	18.93'
L25	N01°18'25"W	1.35'
L26	N89°44'11"E	4.50'
L27	N44°44'11"E	29.70'
L28	S00°15'49"E	4.50'

### RADIAL LINE TABLE

LINE	DIRECTION	DISTANCE
R1	N48°39'04"E	PRC
R2	S85°30'32"E	PRC
R3	S84°58'55"W	PRC
R4	N49°10'41"W	PRC

### CURVE TABLE

CURVE	RADIUS	LENGTH	TANGENT	DELTA
C1	40.50'	185.32'	46.45'	262°10'15"
C2	26.50'	19.00'	9.93'	41°05'07"
C3	40.50'	32.40'	17.12'	45°50'24"
C4	40.50'	60.26'	37.27'	85°14'43"
C5	40.50'	60.26'	37.27'	85°14'43"
C6	40.50'	32.40'	17.12'	45°50'24"
C7	26.50'	19.00'	9.93'	41°05'07"
C8	16.50'	25.92'	16.50'	90°00'00"
C9	16.50'	25.62'	16.20'	88°57'23"
C10	16.50'	26.22'	16.80'	91°02'37"
C11	20.00'	31.05'	19.64'	88°57'23"
C12	20.00'	31.78'	20.37'	91°02'37"

### NOTES

- PURSUANT TO NRS 278.371 ALL REAR LOT CORNERS SHALL BE SET WITH A NAIL AND TAG "P.L.S. 8421" ON BLOCK WALL AND ALL FRONT OR SIDE LOT CORNERS ADJOINING RIGHT-OF-WAY SHALL BE MARKED BY THE SAWCUTTING OF THE BACK OF CURBS ON THE PROLONGATION OF THE PROPERTY LINES.
- DIRECT VEHICULAR ACCESS TO EL CAPITAN WAY FROM ABUTTING LOTS IS PROHIBITED.

ACT	DATE	BY	REVISION

W.O. 4182-5E  
SHEET 2 OF 2

vcl

*Book 66 Page 83 058-4214-5E*  
*11-6-2018*