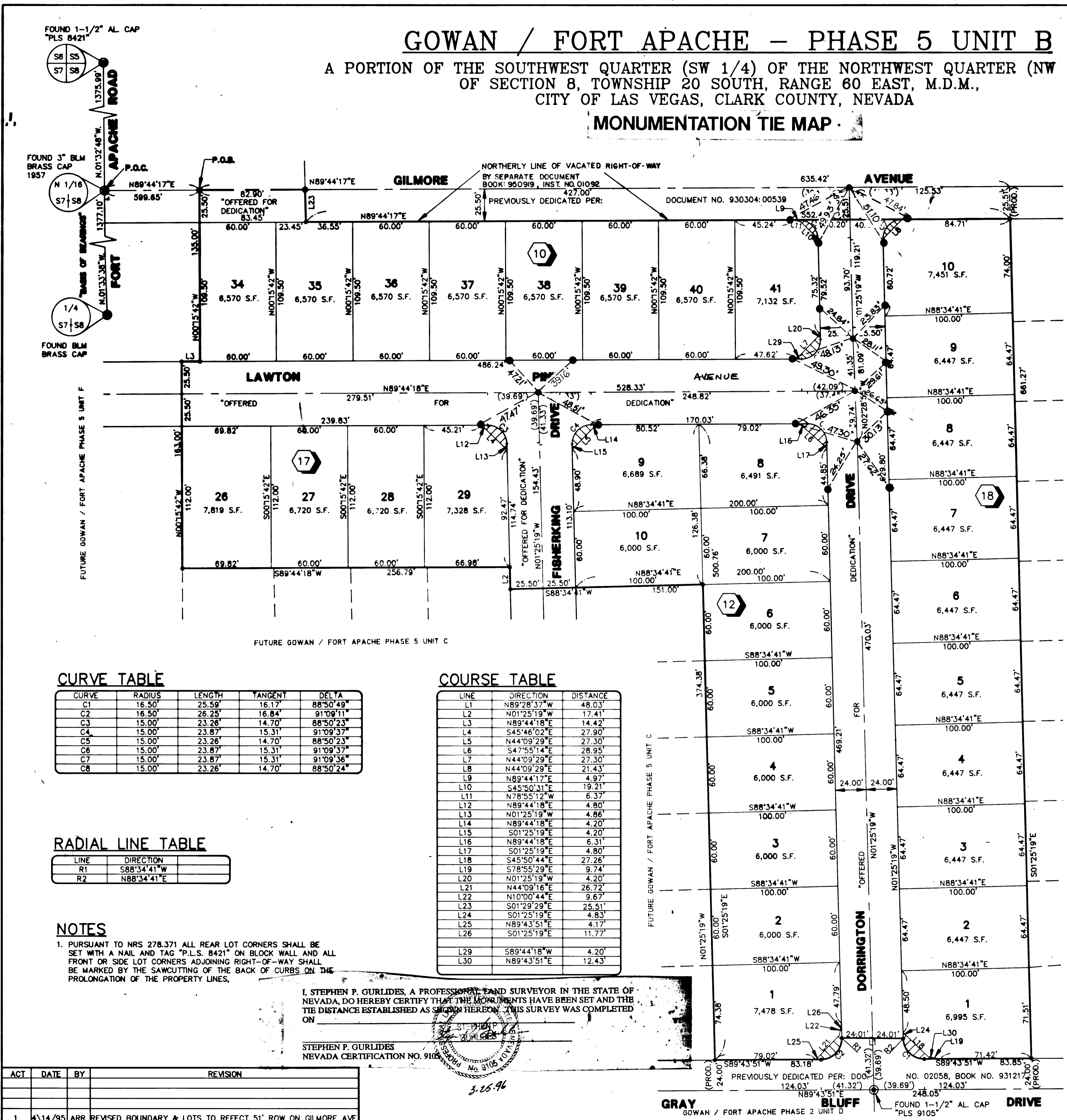


# GOWAN / FORT APACHE - PHASE 5 UNIT B

A PORTION OF THE SOUTHWEST QUARTER (SW 1/4) OF THE NORTHWEST QUARTER (NW 1/4) OF SECTION 8, TOWNSHIP 20 SOUTH, RANGE 60 EAST, M.D.M., CITY OF LAS VEGAS, CLARK COUNTY, NEVADA

## MONUMENTATION TIE MAP



### LEGEND

- P.O.C. POINT OF COMMENCEMENT
  - P.O.B. POINT OF BEGINNING
  - 15 LOT NUMBER / RESIDENTIAL = 32
  - Ⓢ BLOCK NUMBER
  - R1 RADIAL LINE NUMBER
  - L3 COURSE NUMBER
  - C2 CURVE NUMBER
  - ⊙ FOUND MONUMENT AS DESCRIBED
  - SET TYPE III MONUMENT - "VTN PLS 9105"
  - SET NAIL & BRASS TAG "PLS 8421" OR SAWCUT TOP OF CURB ON PROLONGATION OF PROPERTY LINES, PER NOTE 1
  - S.F. SQUARE FEET
  - CENTERLINE
  - LOT LINE
  - BOUNDARY LINE
- "SIGHT VISIBILITY RESTRICTION EASEMENTS" - ARE PUBLIC EASEMENTS AND AS SUCH THE HEIGHT OF LANDSCAPING OR PHYSICAL IMPROVEMENTS WITHIN THE EASEMENT AREA ARE RESTRICTED TO A MAXIMUM HEIGHT OF 30 INCHES.

### CURVE TABLE

CURVE	RADIUS	LENGTH	TANGENT	DELTA
C1	16.50'	25.59'	16.17'	88°50'49"
C2	16.50'	26.25'	16.84'	91°09'11"
C3	15.00'	23.26'	14.70'	88°50'23"
C4	15.00'	23.87'	15.31'	91°09'37"
C5	15.00'	23.26'	14.70'	88°50'23"
C6	15.00'	23.87'	15.31'	91°09'37"
C7	15.00'	23.87'	15.31'	91°09'36"
C8	15.00'	23.26'	14.70'	88°50'24"

### COURSE TABLE

LINE	DIRECTION	DISTANCE
L1	N89°28'37"W	48.03'
L2	N01°25'19"W	17.41'
L3	N89°44'18"E	14.42'
L4	S45°46'02"E	27.90'
L5	N44°09'29"E	27.30'
L6	S47°55'14"E	28.95'
L7	N44°09'29"E	27.30'
L8	N44°09'29"E	21.43'
L9	N89°44'17"E	4.97'
L10	S45°50'31"E	19.21'
L11	N78°55'12"W	6.37'
L12	N89°44'18"E	4.80'
L13	N01°25'19"W	4.86'
L14	N89°44'18"E	4.20'
L15	S01°25'19"W	4.20'
L16	N89°44'18"E	6.31'
L17	S01°25'19"W	4.80'
L18	S45°50'44"E	27.26'
L19	S78°55'29"E	9.74'
L20	N01°25'19"W	4.20'
L21	N44°09'16"E	26.72'
L22	N10°00'44"E	9.67'
L23	S01°29'29"E	25.51'
L24	S01°25'19"E	4.83'
L25	N89°43'51"E	4.17'
L26	S01°25'19"E	11.77'
L29	S89°44'18"W	4.20'
L30	N89°43'51"E	12.43'

### RADIAL LINE TABLE

LINE	DIRECTION
R1	S88°34'41"W
R2	N88°34'41"E

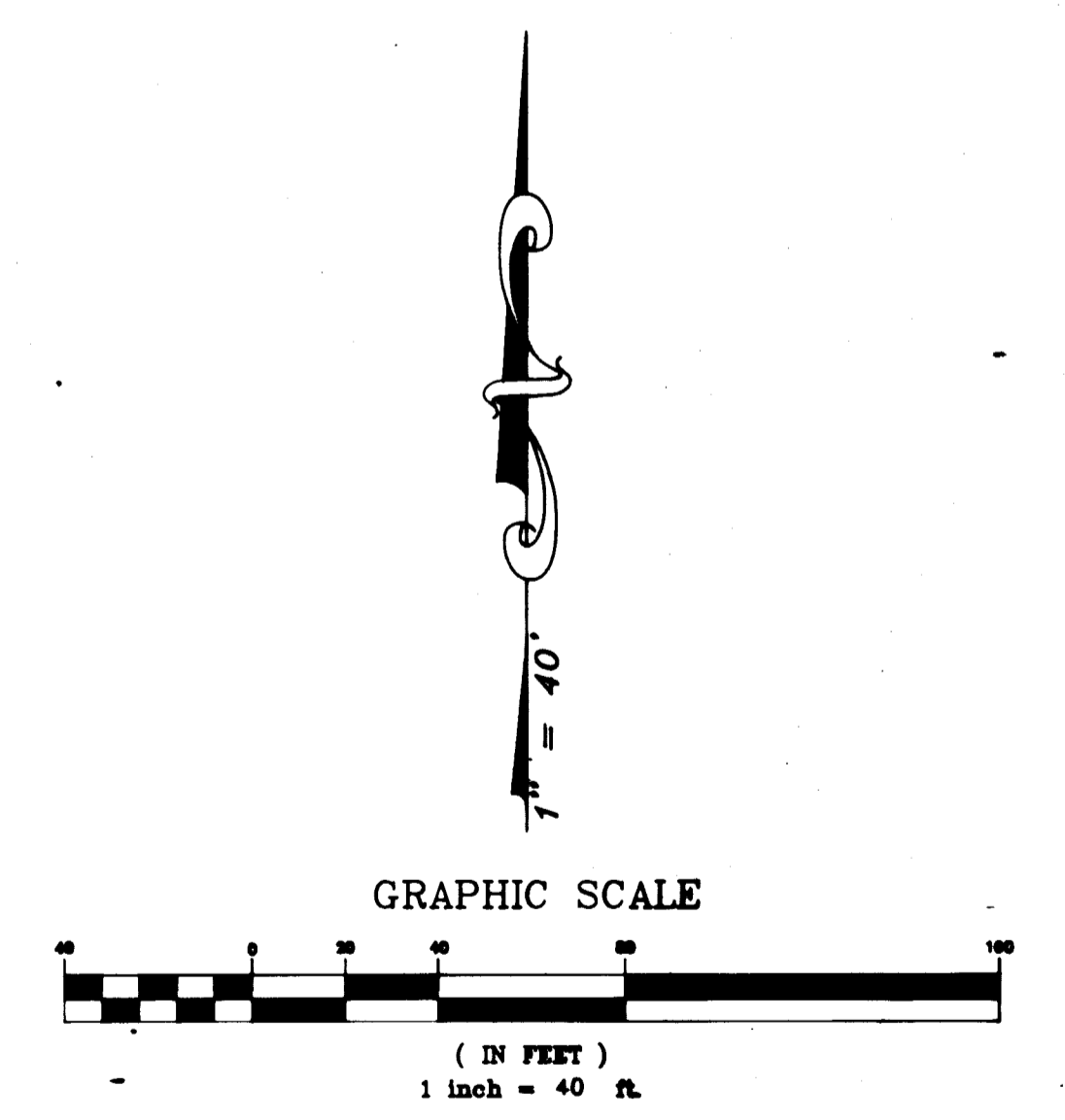
### NOTES

1. PURSUANT TO NRS 278.371 ALL REAR LOT CORNERS SHALL BE SET WITH A NAIL AND TAG "P.L.S. 8421" ON BLOCK WALL AND ALL FRONT OR SIDE LOT CORNERS ADJOINING RIGHT-OF-WAY SHALL BE MARKED BY THE SAWCUTTING OF THE BACK OF CURBS ON THE PROLONGATION OF THE PROPERTY LINES.

I, STEPHEN P. GURLIDES, A PROFESSIONAL LAND SURVEYOR IN THE STATE OF NEVADA, DO HEREBY CERTIFY THAT THE MONUMENTS HAVE BEEN SET AND THE TIE DISTANCE ESTABLISHED AS SHOWN HEREON. THIS SURVEY WAS COMPLETED ON \_\_\_\_\_

STEPHEN P. GURLIDES  
NEVADA CERTIFICATION NO. 9105

ACT	DATE	BY	REVISION
1	4/14/95	ARR	REVISED BOUNDARY & LOTS TO REFLECT 51' ROW ON GILMORE AVE



W.O. 4182-A1  
SHEET 2 OF 2  
VCL/ARR

