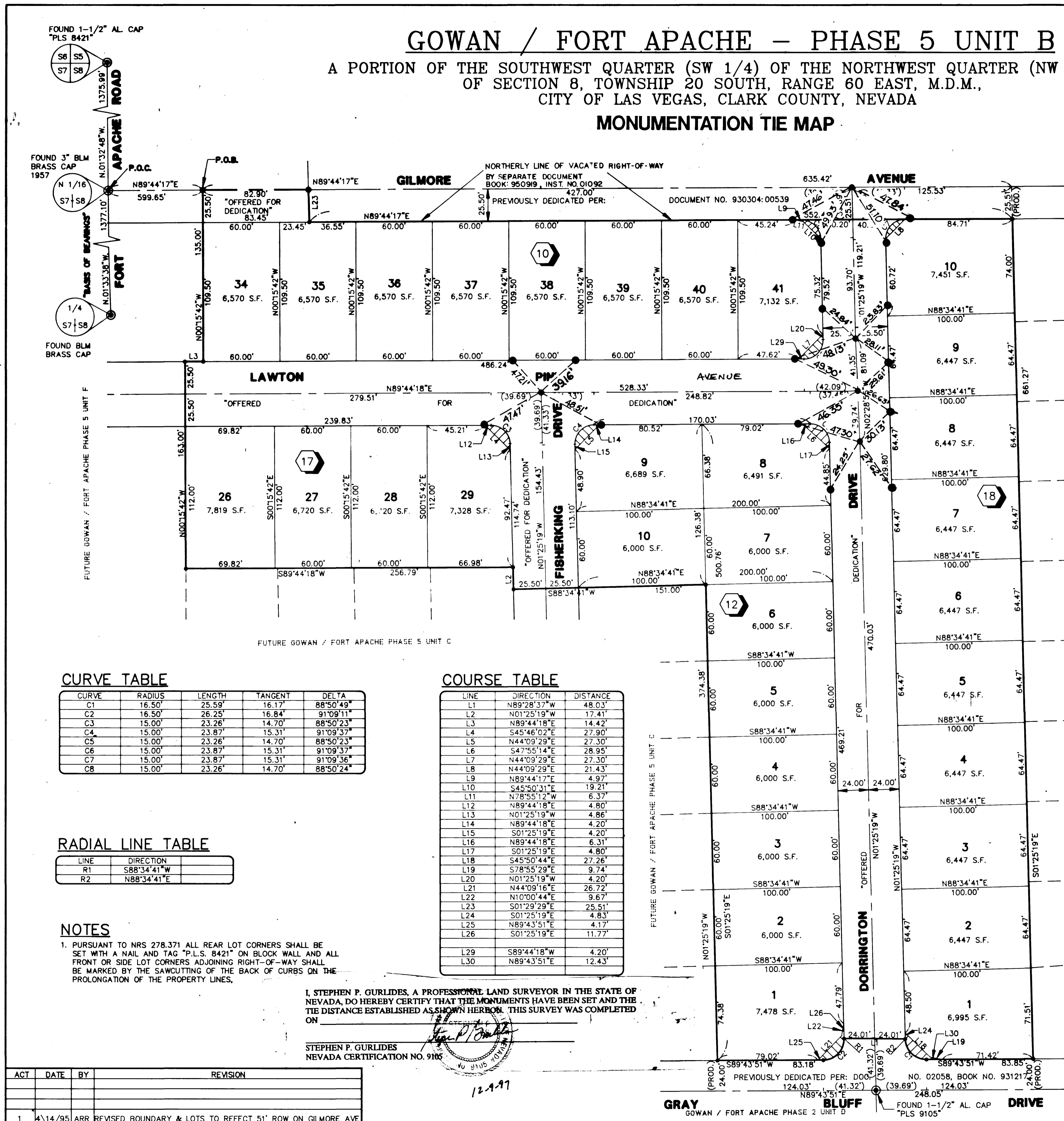


GOWAN / FORT APACHE - PHASE 5 UNIT B

A PORTION OF THE SOUTHWEST QUARTER (SW 1/4) OF THE NORTHWEST QUARTER (NW 1/4) OF SECTION 8, TOWNSHIP 20 SOUTH, RANGE 60 EAST, M.D.M., CITY OF LAS VEGAS, CLARK COUNTY, NEVADA

MONUMENTATION TIE MAP



LEGEND

- P.O.C. POINT OF COMMENCEMENT
- P.O.B. POINT OF BEGINNING
- 15 LOT NUMBER / RESIDENTIAL = 32
- 2 BLOCK NUMBER
- R1 RADIAL LINE NUMBER
- L3 COURSE NUMBER
- C2 CURVE NUMBER
- FOUND MONUMENT AS DESCRIBED
- SET TYPE III MONUMENT - "VTN PLS 9105"
- SET NAIL & BRASS TAG "PLS 8421" OR SAWCUT TOP OF CURB ON PROLONGATION OF PROPERTY LINES, PER NOTE 1
- S.F. SQUARE FEET
- CENTERLINE
- LOT LINE
- BOUNDARY LINE

"SIGHT VISIBILITY RESTRICTION EASEMENTS" - ARE PUBLIC EASEMENTS AND AS SUCH THE HEIGHT OF LANDSCAPING OR PHYSICAL IMPROVEMENTS WITHIN THE EASEMENT AREA ARE RESTRICTED TO A MAXIMUM HEIGHT OF 30 INCHES.

CURVE TABLE

CURVE	RADIUS	LENGTH	TANGENT	DELTA
C1	16.50'	25.59'	16.17'	88°50'49"
C2	16.50'	26.25'	16.84'	91°09'11"
C3	15.00'	23.26'	14.70'	88°50'23"
C4	15.00'	23.87'	15.31'	91°09'37"
C5	15.00'	23.26'	14.70'	88°50'23"
C6	15.00'	23.87'	15.31'	91°09'37"
C7	15.00'	23.87'	15.31'	91°09'36"
C8	15.00'	23.26'	14.70'	88°50'24"

COURSE TABLE

LINE	DIRECTION	DISTANCE
L1	N89°28'37"W	48.03'
L2	N01°25'19"W	17.41'
L3	N89°44'18"E	14.42'
L4	S45°46'02"E	27.90'
L5	N44°09'29"E	27.30'
L6	S47°55'14"E	28.95'
L7	N44°09'29"E	27.30'
L8	N44°09'29"E	21.43'
L9	N89°44'17"E	4.97'
L10	S45°50'31"E	19.21'
L11	N78°55'12"W	6.37'
L12	N89°44'18"E	4.80'
L13	N01°25'19"W	4.86'
L14	N89°44'18"E	4.20'
L15	S01°25'19"E	4.20'
L16	N89°44'18"E	6.31'
L17	S01°25'19"E	4.80'
L18	S45°50'44"E	27.26'
L19	S78°55'29"E	9.74'
L20	N01°25'19"W	4.20'
L21	N44°09'16"E	26.72'
L22	N10°00'44"E	9.67'
L23	S01°29'29"E	25.51'
L24	S01°25'19"E	4.83'
L25	N89°43'51"E	4.17'
L26	S01°25'19"E	11.77'
L29	S89°44'18"W	4.20'
L30	N89°43'51"E	12.43'

RADIAL LINE TABLE

LINE	DIRECTION
R1	S88°34'41"W
R2	N88°34'41"E

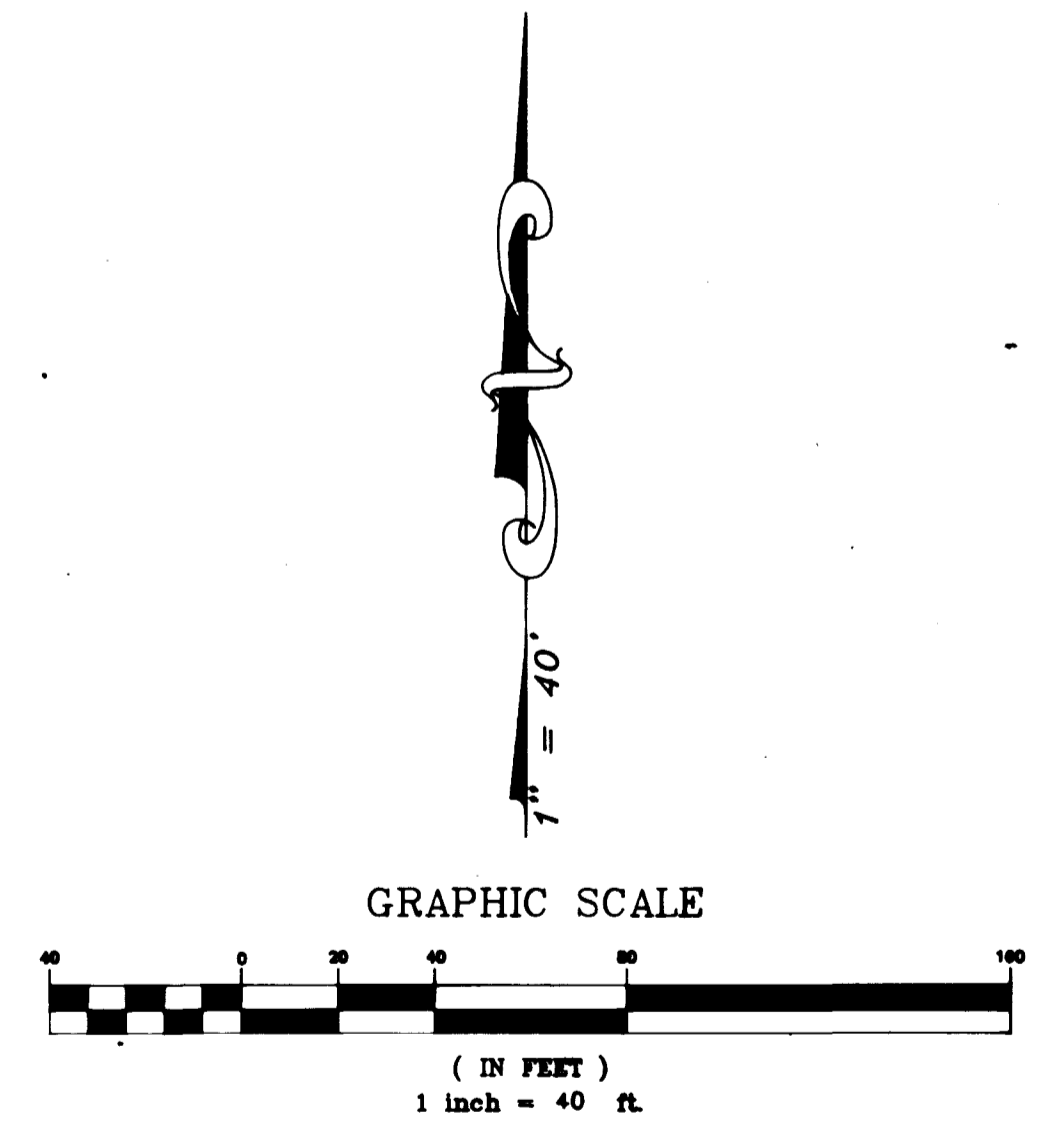
NOTES

1. PURSUANT TO NRS 278.371 ALL REAR LOT CORNERS SHALL BE SET WITH A NAIL AND TAG "PLS 8421" ON BLOCK WALL AND ALL FRONT OR SIDE LOT CORNERS ADJOINING RIGHT-OF-WAY SHALL BE MARKED BY THE SAWCUTTING OF THE BACK OF CURBS ON THE PROLONGATION OF THE PROPERTY LINES.

I, STEPHEN P. GURLIDES, A PROFESSIONAL LAND SURVEYOR IN THE STATE OF NEVADA, DO HEREBY CERTIFY THAT THE MONUMENTS HAVE BEEN SET AND THE TIE DISTANCE ESTABLISHED AS SHOWN HEREON. THIS SURVEY WAS COMPLETED ON

STEPHEN P. GURLIDES
NEVADA CERTIFICATION NO. 9105

ACT	DATE	BY	REVISION
1	4/14/95	ARR	REVISED BOUNDARY & LOTS TO REFLECT 51' ROW ON GILMORE AVE



W.O. 4182-A1
SHEET 2 OF 2

VCL/ARR

058-4214-58

