

GOWAN / FORT APACHE PHASE 5 UNIT A

A PORTION OF THE SOUTH HALF (S 1/2) OF THE NORTHWEST QUARTER (NW 1/4)
OF SECTION 8, TOWNSHIP 20 SOUTH, RANGE 60 EAST, M.D.M.,
CITY OF LAS VEGAS, CLARK COUNTY, NEVADA

MONUMENTATION TIE MAP

LEGEND

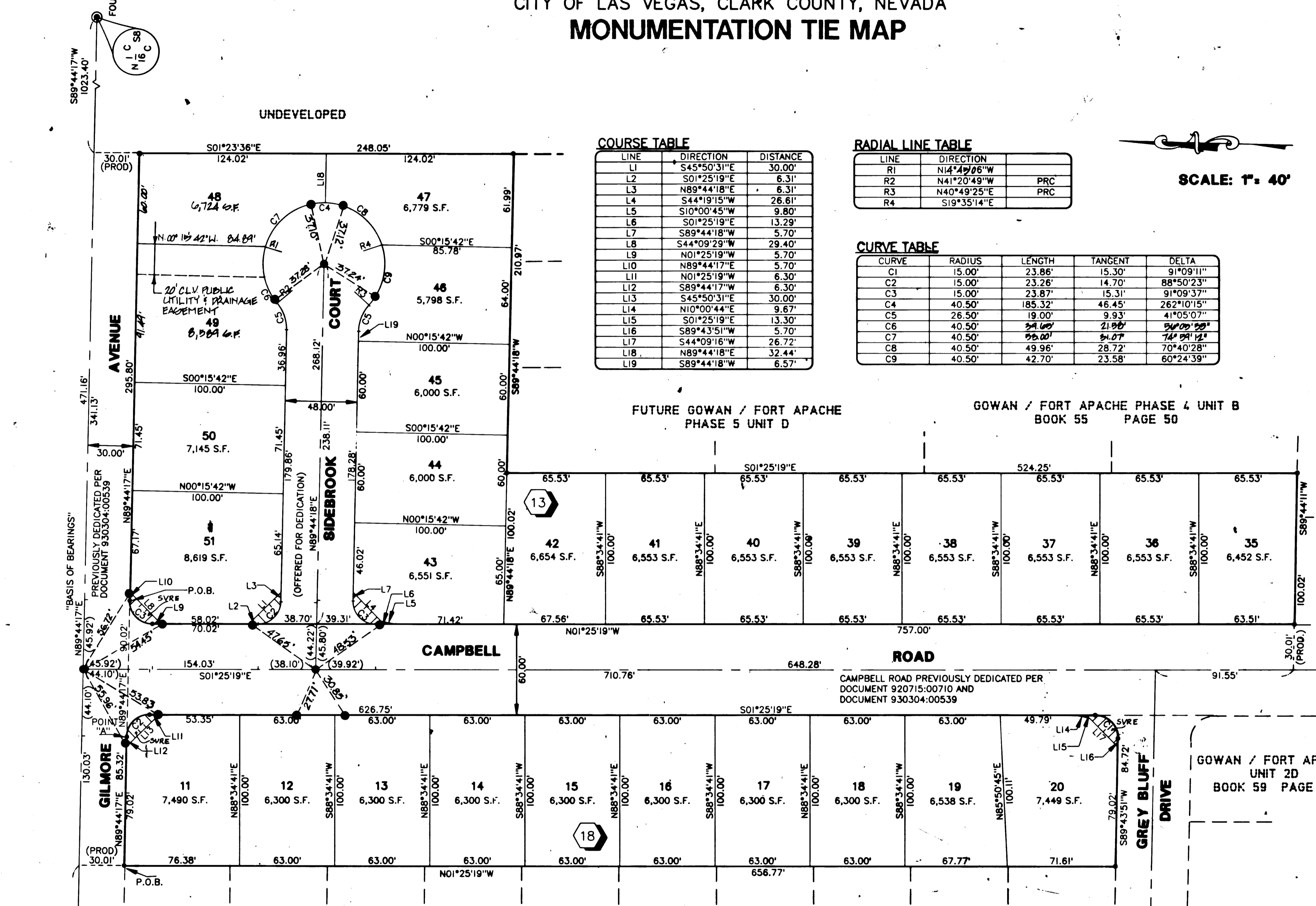
- P.O.C. POINT OF COMMENCEMENT
- P.O.B. POINT OF BEGINNING
- I5 LOT NUMBER / RESIDENTIAL = 27
- 2 BLOCK NUMBER
- R1 RADIAL LINE NUMBER
- C2 CURVE NUMBER
- FOUND MONUMENT AS DESCRIBED
- SET TYPE III MONUMENT - AL. CAP "VTN PLS 9105"
- SET NAIL & BRASS TAG "PLS 8421" OR SAWCUT TOP OF CURB ON PROLONGATION OF PROPERTY LINES, PER NOTE 1
- S.F. SQUARE FEET
- SVRE SITE VISIBILITY RESTRICTION EASEMENT - PER CITY OF LAS VEGAS STANDARD DWG. NO. 404.1600

SCALE: 1" = 40'

LINE	DIRECTION	DISTANCE
L1	S45°50'31"E	30.00'
L2	S01°25'19"E	6.31'
L3	N89°44'18"E	6.31'
L4	S44°09'15"W	26.61'
L5	S10°00'45"W	9.80'
L6	S01°25'19"E	13.29'
L7	S89°44'18"W	5.70'
L8	S44°09'29"W	29.40'
L9	N01°25'19"W	5.70'
L10	N89°44'17"E	5.70'
L11	N01°25'19"W	6.30'
L12	S89°44'17"W	6.30'
L13	S45°50'31"E	30.00'
L14	N10°00'44"E	9.67'
L15	S01°25'19"E	13.30'
L16	S89°43'51"W	5.70'
L17	S44°09'16"W	26.72'
L18	N89°44'18"E	32.44'
L19	S89°44'18"W	6.57'

LINE	DIRECTION	PRC
R1	N41°41'06"W	
R2	N41°20'49"W	PRC
R3	N40°49'25"E	PRC
R4	S19°35'14"E	

CURVE	RADIUS	LENGTH	TANGENT	DELTA
C1	15.00'	23.86'	15.30'	91°09'11"
C2	15.00'	23.26'	14.70'	88°50'23"
C3	15.00'	23.87'	15.31'	91°09'37"
C4	40.50'	185.32'	46.45'	262°10'15"
C5	26.50'	19.00'	9.93'	41°05'07"
C6	40.50'	24.60'	21.88'	24°00'58"
C7	40.50'	26.00'	24.27'	74°08'12"
C8	40.50'	49.96'	28.72'	70°40'28"
C9	40.50'	42.70'	23.58'	60°24'39"



FUTURE GOWAN / FORT APACHE PHASE 5 UNIT D

GOWAN / FORT APACHE PHASE 4 UNIT B BOOK 55 PAGE 50

GOWAN / FORT APACHE PHASE 4 UNIT A BOOK 55 PAGE 49

GOWAN / FORT APACHE UNIT 2D BOOK 59 PAGE 82

I, STEPHEN P. GURLIDES, A PROFESSIONAL LAND SURVEYOR IN THE STATE OF NEVADA, DO HEREBY CERTIFY THAT THE MONUMENTS HAVE BEEN SET AND THE TIE DISTANCE ESTABLISHED AS SHOWN HEREON. THIS SURVEY WAS COMPLETED ON _____

STEPHEN P. GURLIDES
NEVADA CERTIFICATION NO. 9105

9.30.96

NOTES

- PURSUANT TO NRS 278.371, ALL REAR LOT CORNERS SHALL BE SET WITH A NAIL AND BRASS TAG "PLS 8421" ON BLOCK WALLS AND ALL FRONT OR SIDE LOT CORNERS ADJOINING RIGHT-OF-WAYS SHALL BE MARKED BY THE SAWCUTTING OF THE BACK OF CURB ON THE PROLONGATION OF THE PROPERTY LINES.
- DIRECT VEHICULAR ACCESS TO GILMORE AVENUE FROM ABUTTING LOTS IS PROHIBITED.

ACT	DATE	BY	REVISION
1	2/16/94	VCL	NEW CLUESACK ALIGNMENT, AND SVRE

