

920504

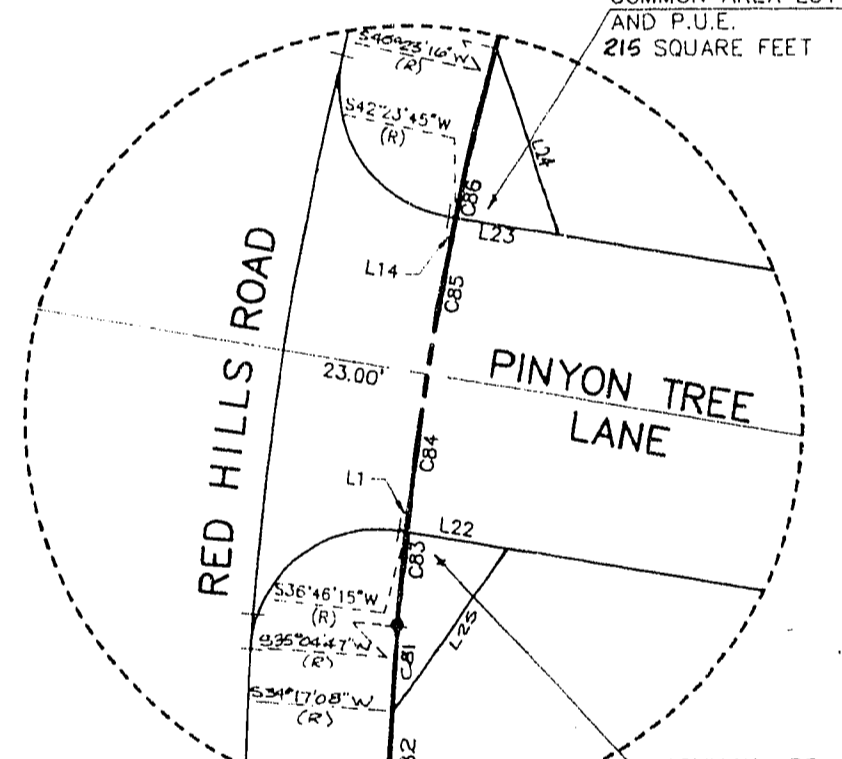
00744

MONUMENT TIE MAP HERITAGE ESTATES UNIT 2

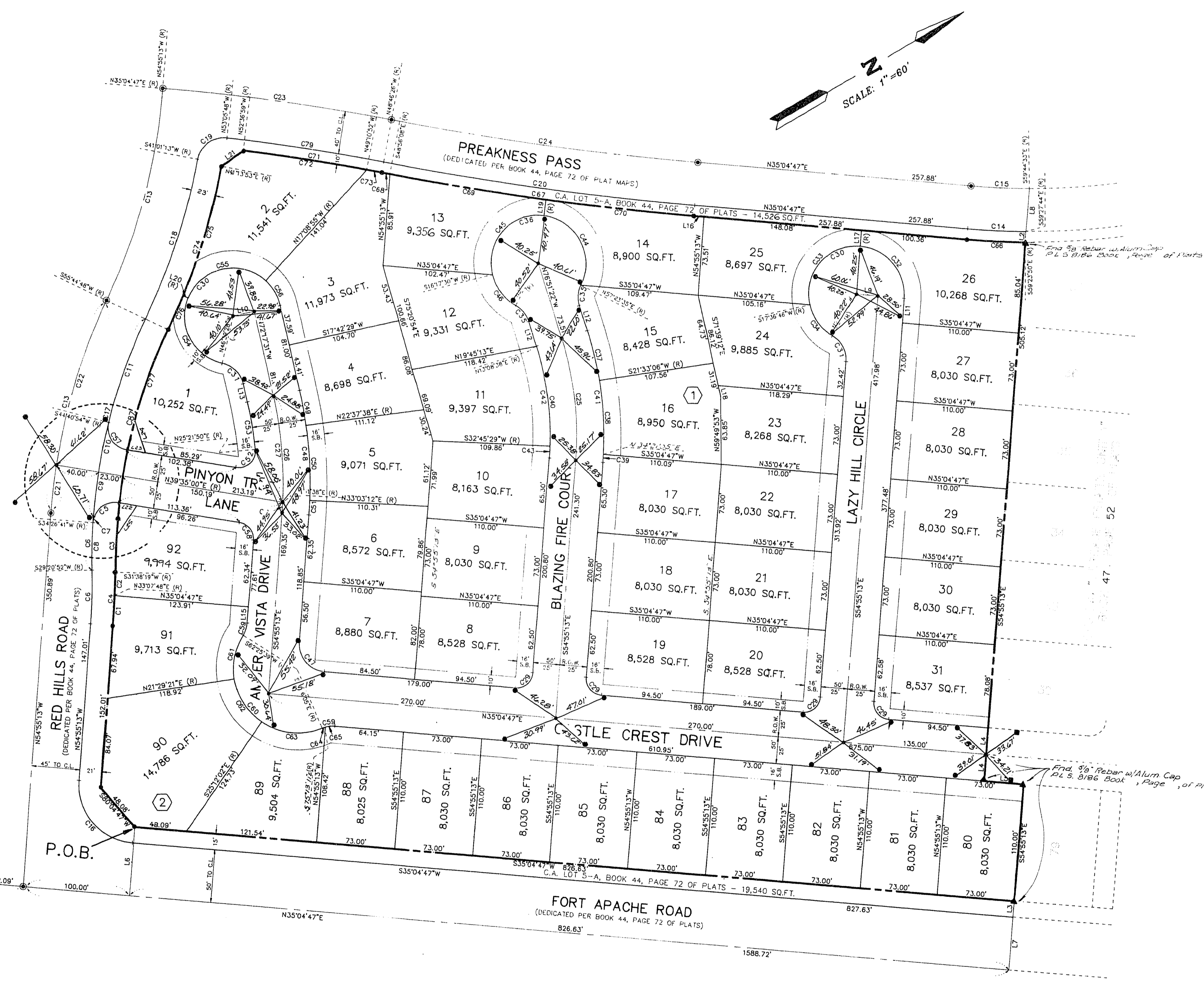
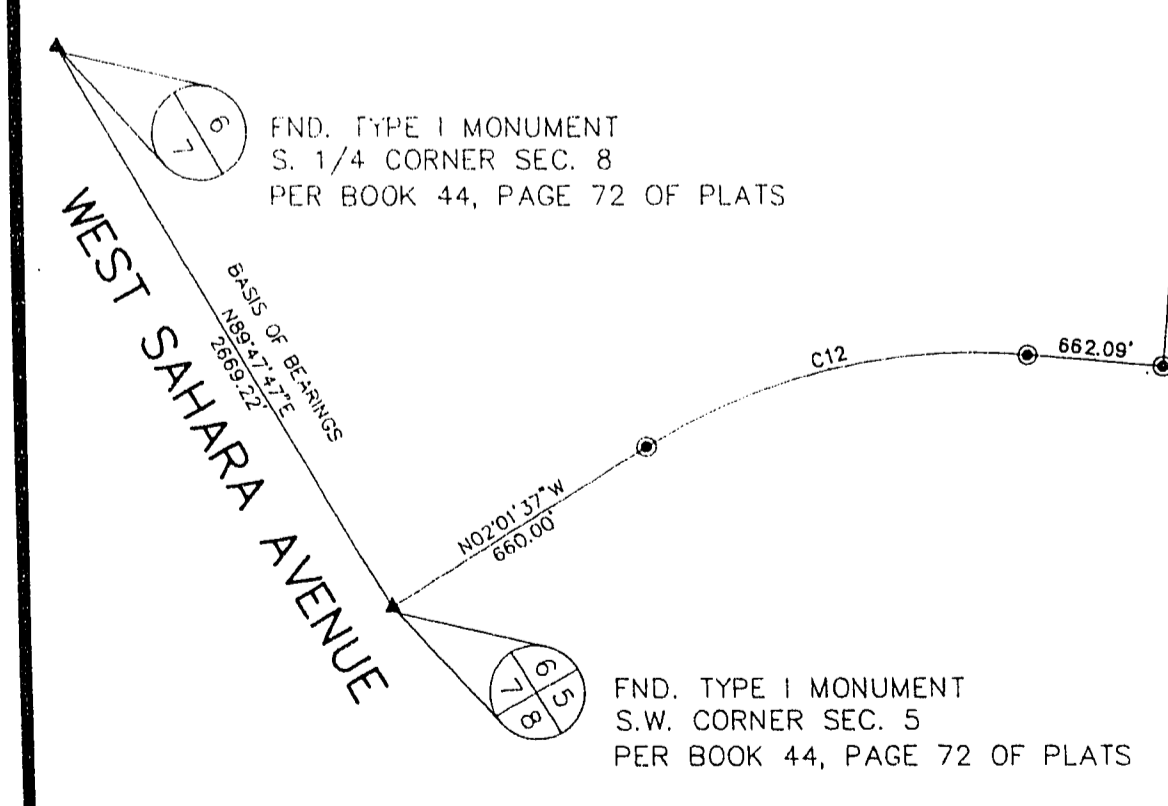
BEING A PORTION OF THE NORTHWEST QUARTER OF SECTION 5, TOWNSHIP 21 SOUTH, RANGE 60 EAST, M.D.M., CITY OF LAS VEGAS, CLARK COUNTY, NEVADA

LEGEND

- ▲ FOUND MONUMENT AS INDICATED
- FND. 5/8" REBAR W/ALUM. CAP PLS 6201 PER BOOK 44, PAGE 72 OF PLATS
- SET 5/8" REBAR W/ALUM. CAP PLS 6902
- C5 CURVE DATA
- L5 LINE DATA
- 27 LOT NUMBER (TOTAL THIS MAP = 44)
- ① BLOCK NUMBER
- P.U.E. PUBLIC UTILITY EASEMENT
- SETBACK LINE (16' FRONT, 10' SIDE)
- PROPERTY LINE
- BOUNDARY LINE
- CENTERLINE
- SET 1-3/8" BRASS CAP IN T.C. STAMPED R.M. PLS 6902 (DISTANCE NOTED)
- FND. 1-3/8" BRASS CAP IN T.C. STAMPED R.M. PLS 8186 (DISTANCE NOTED)



DETAIL



CURVE DATA

No.	RADIUS	DELTA	LENGTH	TANGENT
C1	832.00'	015°00'	28.31'	14.16'
C2	832.00'	0129°29'	21.86'	10.83'
C3	832.00'	032°15'	48.77'	24.39'
C4	832.00'	032°28'	49.97'	24.99'
C5	20.50'	85°08'19"	34.04'	22.43'
C6	500.00'	054°56'	50.02'	25.01'
C7	500.00'	063°07'	5.54'	2.77'
C8	500.00'	0505°50'	44.48'	22.25'
C9	532.50'	043°01'	41.88'	20.94'
C10	532.50'	0405°54'	47.38'	23.71'
C11	532.50'	1103°54'	102.84'	51.58'
C12	2000.00'	31°55'24"	1185.25'	571.28'
C13	572.50'	20°40'01"	206.50'	104.39'
C14	690.00'	04°32'31"	54.70'	27.35'
C15	650.00'	04°48'20"	54.78'	27.37'
C16	54.00'	90°00'00"	84.82'	54.00'
C17	532.50'	20°40'01"	192.08'	97.09'
C18	619.50'	14°43'55"	151.43'	78.15'
C19	25.00'	85°52'59"	37.47'	23.27'
C20	2740.00'	06°08'47"	293.83'	147.11'
C21	2740.00'	04°30'13"	45.00'	22.50'
C22	572.50'	18°09'48"	161.50'	81.29'
C23	2000.00'	08°08'47"	214.55'	107.30'
C24	2700.00'	08°08'47"	289.64'	144.86'
C25	300.00'	21°56'09"	114.86'	58.14'
C26	360.00'	17°22'16"	109.15'	54.57'
C27	360.00'	16°48'00"	89.40'	50.02'
C28	360.00'	01°33'09"	9.75'	4.88'
C29	600.00'	08°08'47"	21.35'	15.50'
C30	45.00'	244°21'57"	191.92'	---
C31	25.50'	84°21'57"	28.65'	16.05'
C32	600.00'	08°08'47"	70.69'	45.00'
C33	45.00'	107°28'01"	84.40'	61.34'
C34	45.00'	48°53'56"	36.83'	19.57'
C35	25.50'	141°45'14"	15.83'	10.37'
C36	45.00'	288°29'54"	210.88'	---
C37	325.00'	08°24'28"	47.69'	23.89'
C38	325.00'	12°01'17"	65.03'	34.63'
C39	325.00'	01°21'29"	7.70'	3.85'
C40	275.00'	21°56'09"	105.28'	53.29'
C41	325.00'	21°56'09"	124.43'	62.98'
C42	275.00'	19°36'51"	94.14'	47.54'
C43	275.00'	02°19'18"	11.14'	5.57'
C44	45.00'	109°29'25"	85.94'	63.58'
C45	45.00'	111°40'40"	67.71'	66.31'
C46	45.00'	47°23'49"	37.23'	19.25'
C47	25.50'	80°00'00"	40.08'	25.50'
C48	385.00'	17°22'18"	116.73'	58.62'
C49	385.00'	04°55'10"	33.06'	16.54'
C50	385.00'	10°29'34"	10.08'	5.04'
C51	385.00'	02°01'30"	13.62'	6.81'
C52	15.50'	104°31'01"	28.19'	19.92'
C53	335.00'	07°39'27"	44.72'	22.41'
C54	45.00'	99°17'55"	77.99'	52.97'
C55	45.00'	110°17'28"	68.58'	84.52'
C56	45.00'	34°39'17"	67.38'	14.13'
C57	20.50'	85°05'54"	34.03'	22.41'
C58	15.50'	85°29'47"	23.13'	14.33'
C59	25.50'	27°29'52"	12.11'	6.20'
C60	58.50'	144°41'43"	150.28'	186.98'
C61	58.50'	40°56'18"	42.31'	22.21'
C62	58.50'	46°41'23"	48.49'	29.68'
C63	58.50'	57°04'03"	58.26'	32.35'
C64	25.50'	07°02'53"	3.74'	1.87'
C65	25.50'	20°17'38"	8.03'	4.01'
C66	700.00'	04°28'57"	54.70'	27.35'
C67	2750.00'	06°08'47"	295.01'	147.64'
C68	2750.00'	00°00'42"	7.78'	3.88'
C69	2750.00'	03°05'43"	148.58'	74.30'
C70	2750.00'	02°00'11"	138.69'	69.38'
C71	1950.00'	03°20'33"	130.78'	65.41'
C72	1950.00'	03°26'07"	116.92'	58.48'
C73	1950.00'	00°24'16"	13.85'	6.93'
C74	835.50'	14°30'55"	161.00'	80.93'
C75	635.50'	11°24'34"	128.55'	63.48'
C76	635.50'	03°06'17"	24.45'	12.23'
C77	509.50'	07°25'52"	37.11'	46.18'
C78	15.00'	84°38'23"	24.78'	16.27'
C79	1980.00'	04°19'22"	147.88'	73.97'
C80	15.00'	94°35'09"	24.78'	16.25'
C81	832.00'	09°47'48"	11.59'	6.77'
C82	832.00'	22°28'48"	58.95'	19.22'
C83	509.50'	01°41'28"	15.04'	7.52'
C84	509.50'	02°48'45"	25.01'	12.50'
C85	509.50'	02°48'45"	25.01'	12.50'
C86	509.50'	02°29'31"	26.01'	13.01'
C87	509.50'	20°40'01"	183.78'	92.90'

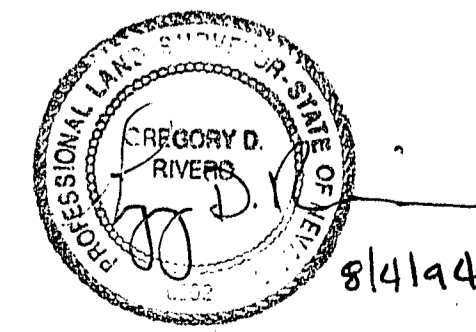
LINE DATA

No.	BEARING	DISTANCE
L1	S39°33'09"W	1.09'
L2	N54°55'13"W	10.03'
L3	S54°55'13"E	15.00'
L4	N54°55'13"W	25.00'
L5	N35°04'47"E	37.20'
L6	N54°55'13"W	85.00'
L7	S54°55'13"E	50.00'
L8	N54°55'13"W	40.13'
L9	N35°04'47"E	20.00'
L10	N174°21'31"W	20.00'
L11	S39°33'09"W	1.09'
L12	S54°55'13"E	15.01'
L13	N72°17'31"W	17.44'
L14	S39°33'09"W	1.09'
L15	S54°55'13"E	15.27'
L16	N35°04'47"E	9.44'
L17	S54°55'13"E	5.00'
L18	S71°39'12"E	9.80'
L19	S52°01'50"E	15.00'
L20	N52°28'27"E	5.00'
L21	N05°51'41"W	25.22'
L22	S39°33'09"W	16.01'
L23	S39°33'09"W	16.01'
L24	N18°10'08"W	30.20'
L25	S22°21'58"E	30.20'

NOTE:
DIRECT VEHICULAR ACCESS TO PREAKNESS PASS,
RED HILLS ROAD AND FORT APACHE ROAD THROUGH
COMMON AREA FROM ABUTTING LOTS IS PROHIBITED.

I, GREGORY D. RIVERO, A PROFESSIONAL LAND SURVEYOR IN THE STATE OF NEVADA, DO HEREBY CERTIFY THAT THE MONUMENTS HAVE BEEN SET AND THE TIES ESTABLISHED AS SHOWN HEREON.

GREGORY D. RIVERO, P.L.S. 6902



10-6-14
Book 52 PAGE 417-2

W.C.F. 7022	# LOTS: 44	DATE: MAY 1990	BY: JANIS
DATE	REVISION DESCRIPTION		
6-18-90	Moved boundary from 100' to 100' from common area lot 24		
7-25-90	SURVEY REVIEW Redlines		
8-28-90	REV. ENTRANCE		
10-4-90	REMOVED STREET NAMES FROM C.I.V. CONNECTIONS		