

MONUMENTATION LOCATION MAP HARBOR COVE

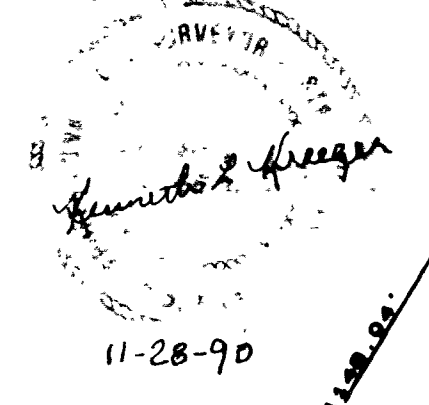
A DIVISION OF PARCEL 1 OF PARCEL MAP FILE 59 PAGE 45 BEING A PART OF DESERT SHORES NO. 1,
LYING IN THE N. 1/2 OF SECTION 16, T. 20 S., R. 60 E., M.D.B. & M., CITY OF LAS VEGAS, STATE OF NEVADA

- LEGEND:**
- MONUMENTS FOUND OR REESTABLISHED FROM TIES PER DESERT SHORES NO. 1 (D.C. 34, PAGE 26)
 - SET 7/8" IRON & PLASTIC CAP, P.L.S. 8305
 - SET 7/8" IRON & AL. CAP, P.L.S. 8305 WITH BRASS CAP TIES IN TOP OF CURB
 - (C) RADIAL LINE BEARING
 - C1 CURVE DATA (SEE TABLE - SHEET 5)
 - L1 LINE DATA (SEE TABLE - SHEET 5)
 - T TYPICAL LOT NUMBER
 - ① TYPICAL BLOCK NUMBER
 - BUILDING SET BACK LINE (NO FRONT, NO REAR & CORNER, NO SIDE)
 - PUBLIC UTILITY & SEWER EASEMENT
 - PUBLIC UTILITY EASEMENT
 - 1 1/2" BRASS CAP REFERENCE MONUMENT SET

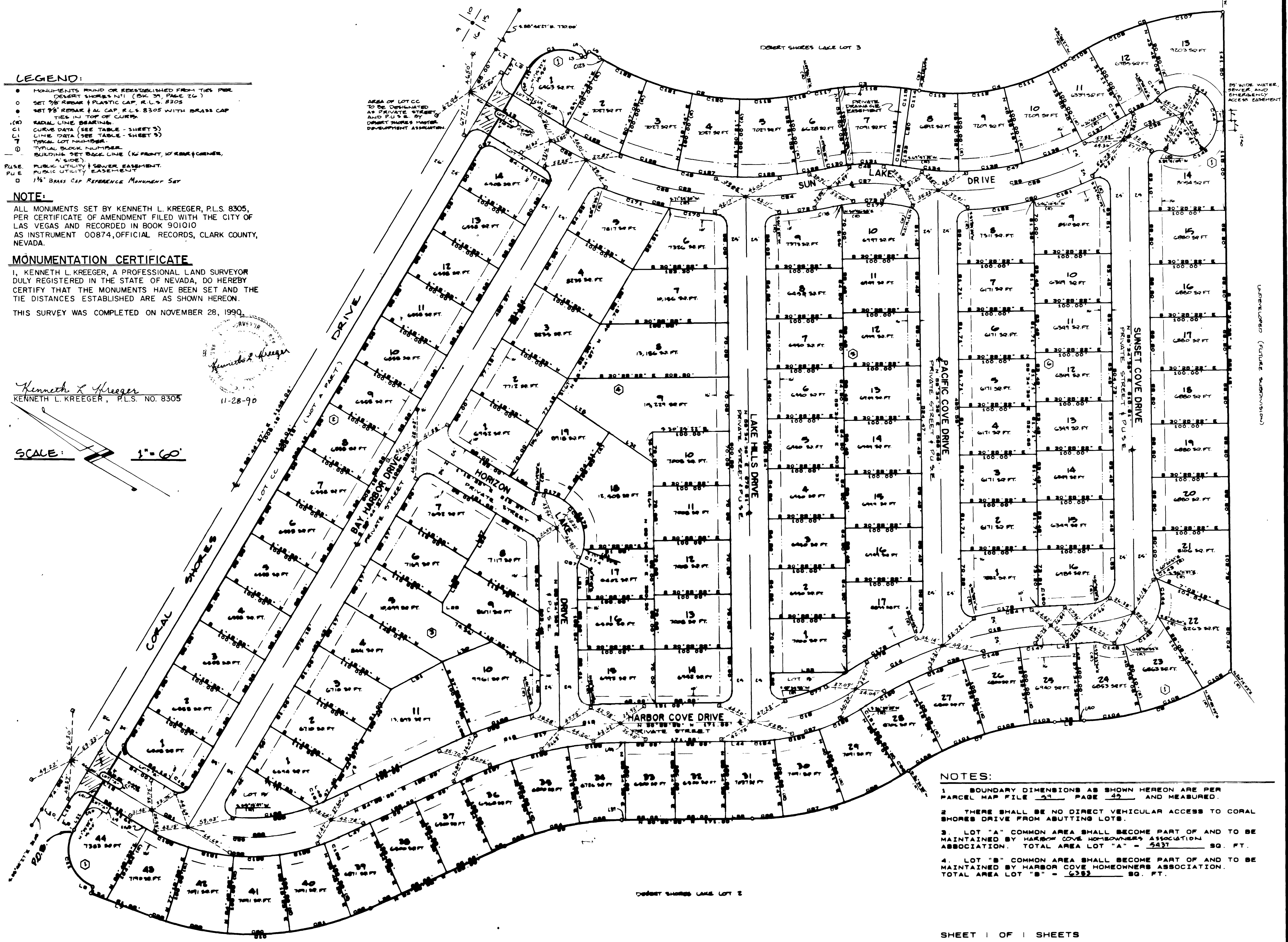
NOTE:
ALL MONUMENTS SET BY KENNETH L. KREEGER, P.L.S. 8305, PER CERTIFICATE OF AMENDMENT FILED WITH THE CITY OF LAS VEGAS AND RECORDED IN BOOK 901010 AS INSTRUMENT 00874, OFFICIAL RECORDS, CLARK COUNTY, NEVADA.

MONUMENTATION CERTIFICATE
I, KENNETH L. KREEGER, A PROFESSIONAL LAND SURVEYOR DULY REGISTERED IN THE STATE OF NEVADA, DO HEREBY CERTIFY THAT THE MONUMENTS HAVE BEEN SET AND THE TIE DISTANCES ESTABLISHED ARE AS SHOWN HEREON.
THIS SURVEY WAS COMPLETED ON NOVEMBER 28, 1990.

Kenneth L. Kreeger
KENNETH L. KREEGER, P.L.S. NO. 8305



SCALE: 1" = 60'



- NOTES:**
1. BOUNDARY DIMENSIONS AS SHOWN HEREON ARE PER PARCEL MAP FILE 59 PAGE 45 AND MEASURED.
 2. THERE SHALL BE NO DIRECT VEHICULAR ACCESS TO CORAL SHORES DRIVE FROM ABUTTING LOTS.
 3. LOT "A" COMMON AREA SHALL BECOME PART OF AND TO BE MAINTAINED BY HARBOR COVE HOMEOWNERS ASSOCIATION. TOTAL AREA LOT "A" = 5437 SQ. FT.
 4. LOT "B" COMMON AREA SHALL BECOME PART OF AND TO BE MAINTAINED BY HARBOR COVE HOMEOWNERS ASSOCIATION. TOTAL AREA LOT "B" = 6382 SQ. FT.

