

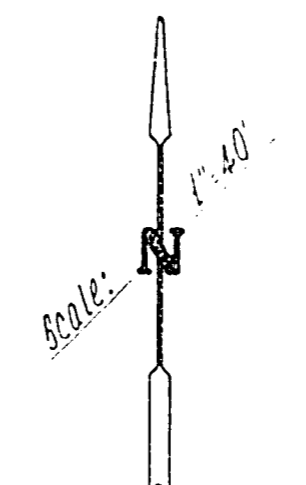
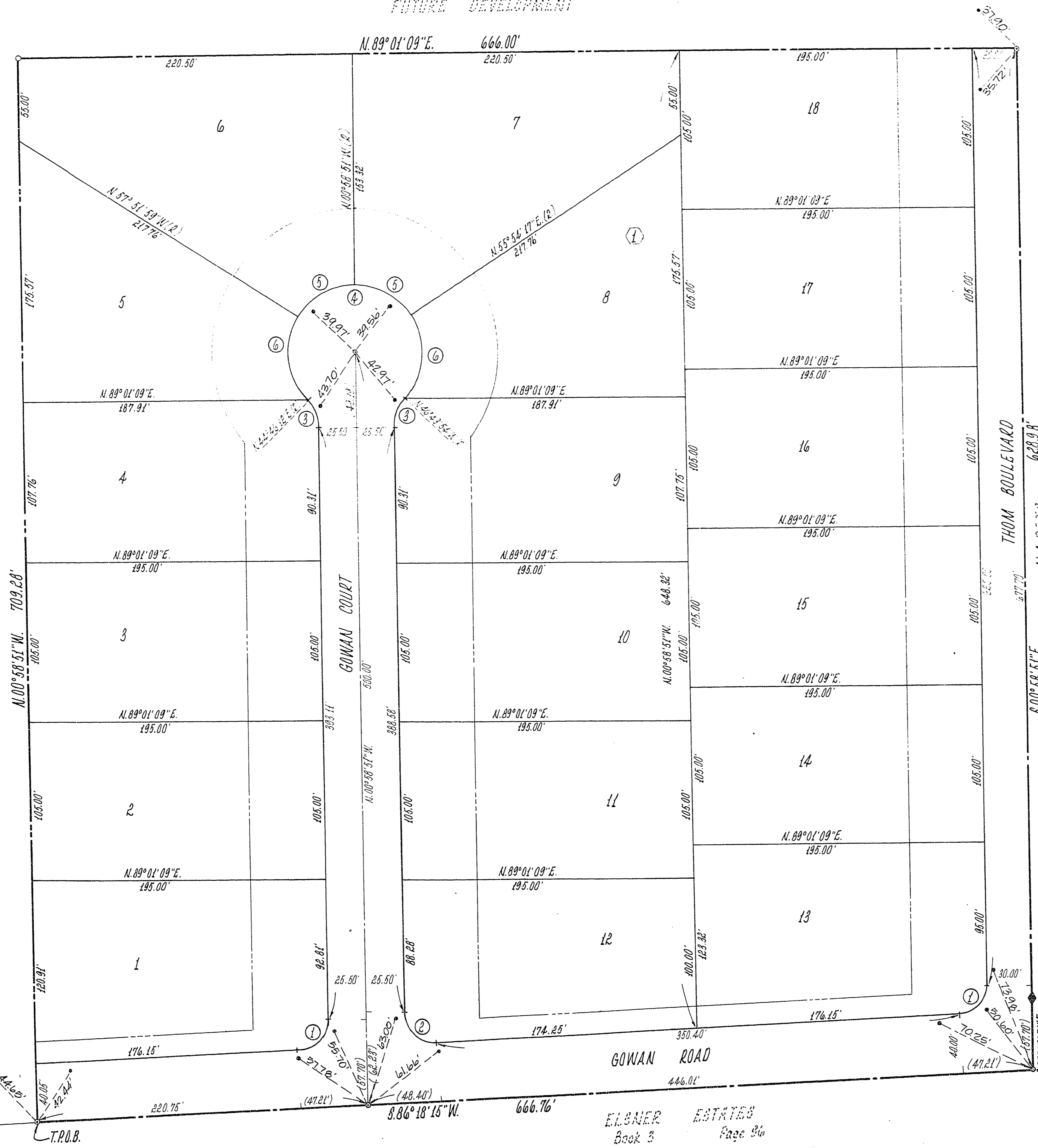
HOMESTEAD ESTATES - UNIT NO. 1

BEING A PORTION OF THE S.E. 1/4 OF THE N.W. 1/4 OF SEC. 12, T. 20 S., R. 60 E., M.D.M.,
CITY OF LAS VEGAS, CLARK COUNTY, NEVADA.

MONUMENT TIE MAP

FUTURE DEVELOPMENT

FUTURE DEVELOPMENT



LEGEND:

- 4 Lot Number
- ① Block Number
- ③ Curve Number
- Set Brass Cap In Conc. Mon.
- Building Set-Back Line
- 15' Side
- 50' Front
- SET KEENE WAL. CAP R.L.S. 4046
- SET LEAD IN BRASS NAIL IN T.C. R.L.S. 4046

CURVE DATA				
Curve No.	△	Radius	Length	Tangent
1	87° 17' 06"	20.00'	30.47'	19.07'
2	92° 42' 54"	20.00'	32.36'	20.97'
3	44° 14' 57"	25.00'	19.31'	10.16'
4	268° 29' 54"	45.50'	213.22'	∞
5	56° 53' 08"	45.50'	45.17'	24.65'
6	77° 21' 49"	45.50'	61.44'	36.43'

SURVEYOR'S CERTIFICATE
 I, JERRY E. BARNEON, A REGISTERED LAND SURVEYOR, DO HEREBY CERTIFY THAT THE MONUMENTS HAVE BEEN SET AND THE TIES ESTABLISHED AS SHOWN HEREON.

 JERRY E. BARNEON
 REG. LAND SURVEYOR
 NEV. CERT. NO. 4046

 DATE

S.E. Cor. of S.W. 1/4 of N.E. 1/4
 Sec. 12, T. 20 S., R. 60 E.
 Fd. 2+2 Hub N/Taq 2 L.S. # 1003

Center 1/4 Cor.
 Sec. 12, T. 20 S., R. 60 E.
 Fd. Mon. R.E. # 290
 194.35'
 40.05'
 32.74'
 44.60'
 N. 86° 18' 15" E.
 Fd. 1 1/2" I.P. w/
 Alum. Plate - R.E. # 361
 T.P.O.B.

ELBNER ESTATES
 Book 3 Page 96

4-6-37